

# Strengthening New Zealand's data system

---

**Dr Craig Jones**

Deputy Chief Executive Stats NZ, Deputy Government Statistician

# Overview



- Government Chief Data Steward (GCDS)
- Government Data Strategy and Roadmap
- 5 cross-cutting themes
- IDI and documentation code modules
- Where to next?



# Government Chief Data Steward (GCDS)

Government  
approach to data  
is joined up

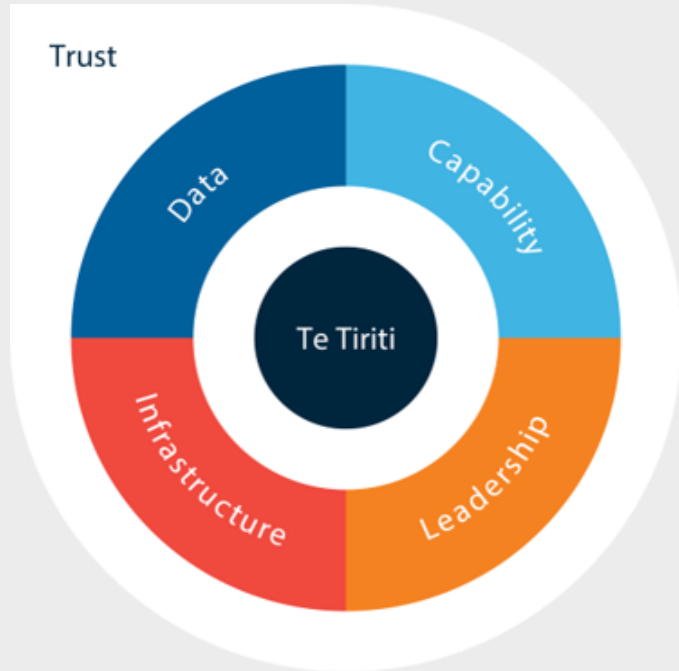
Data system responds to  
current and emerging  
data issues

Agencies have the  
capabilities and tools to  
maximise the value of data

Te Tiriti o Waitangi

Transparency

# Government Data Strategy and Roadmap



Resetting our direction to collectively build an inclusive and integrated data system.

# 5 cross-cutting themes for the Government data system

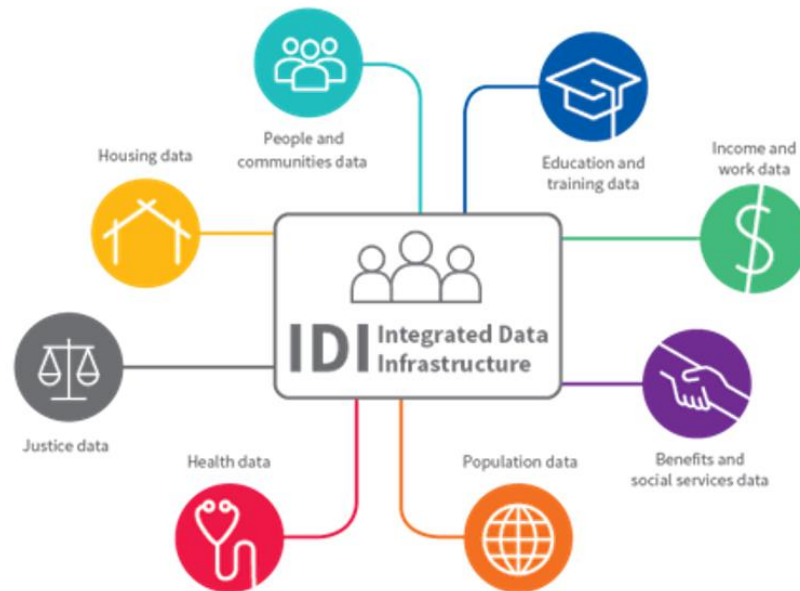
- Trust and Confidence
- Iwi/Māori data
- Investment
- Capability/capacity
- Data access and sharing



# Integrated Data Infrastructure

## Integrated Data Infrastructure (IDI)

An integrated database contained de-identified longitudinal microdata about people and households



## Longitudinal Business Database (LBD)

An integrated database containing de-identified longitudinal microdata about businesses



IDI and LBD are linked through tax data

# Integrated Data Infrastructure

Integrated data enables the analysis of complex social and economic issues that are otherwise unable to be studied

Long-term  
Research

Analytics &  
Insights

Predictive  
Modelling

Informing  
Policy

Monitoring  
&  
Evaluation



Covid-19 Complex Contagion Model



**MINISTRY OF SOCIAL  
DEVELOPMENT**  
TE MANATŪ WHAKAHIATO ORA

Performance of the benefit system



School-based equity funding

# Our current documentation is not fit for purpose

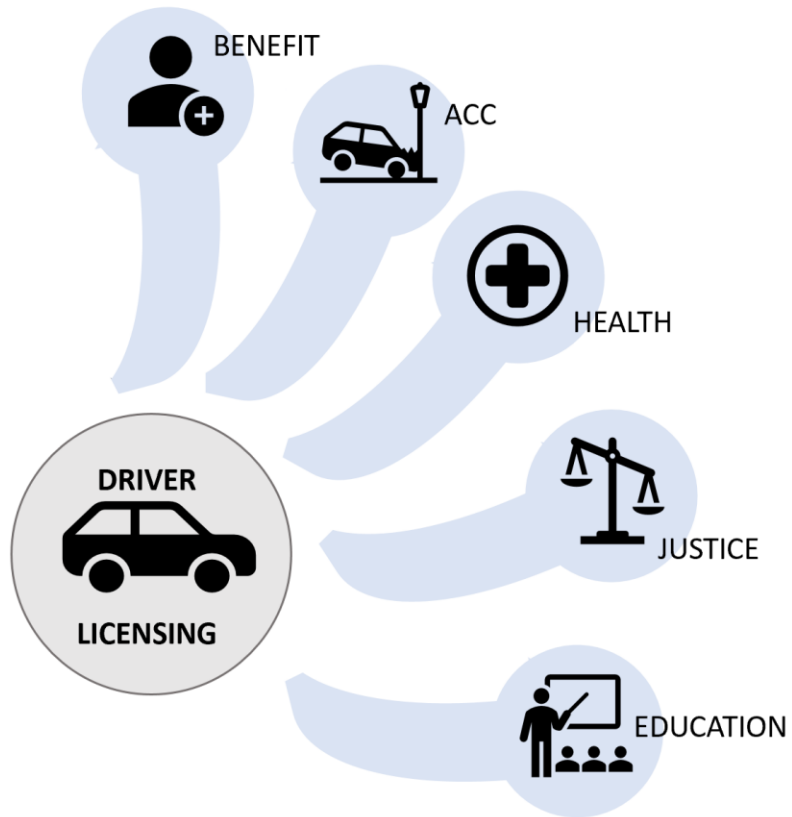


- Data dictionaries are out of date, or missing and assume a high-level of existing expertise
- Message boards are unavailable outside Data Lab and rely on key people
- Missing:
  - Definitions of basic concepts
  - Reliable feedback mechanism
  - Clarity on who needs to feed in, and how

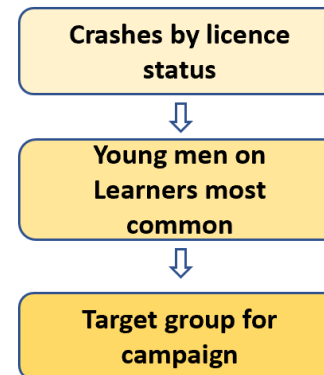


# Documentation code modules

## Target population for a driver licence campaign



Crashes	People
Serious	Licence status
Location	Employment status
Motorcycle	Age
Alcohol	Education history



# Where to next?

- Moving from a pilot project to permanent
- Securing investment?
- Stats NZ is 'the community hall'



E noho rā

*Farewell*

---

**Dr Craig Jones**

Deputy Chief Executive Stats NZ, Deputy Government Statistician