

# SAS and Microsoft: A Roadmap to Success

*After 2 years of strategic partnership between Microsoft and SAS, this presentation will focus on success brought to shared clients, how this was achieved, as well as the roadmap for value driving integrations between SAS and Microsoft Azure.*

Lily Clarke, SAS

Nick Cater, Microsoft



# Presenters



**LILY CLARKE**

SAS Institute

Lead Healthcare and  
Government Customer Advisor  
for Australia and New Zealand

[linkedin.com/in/lilyacclarke](https://www.linkedin.com/in/lilyacclarke)



**NICK CATER**

Microsoft

NZ Data & AI Specialist for Public  
Sector and Health

[linkedin.com/in/nick-cater-5a189b9](https://www.linkedin.com/in/nick-cater-5a189b9)

# SAS and Microsoft Strategic Partnership

SAS and Microsoft have formed an extensive technology and go-to-market strategic partnership:



**WELCOME TO THE EMPOWERED CLOUD**

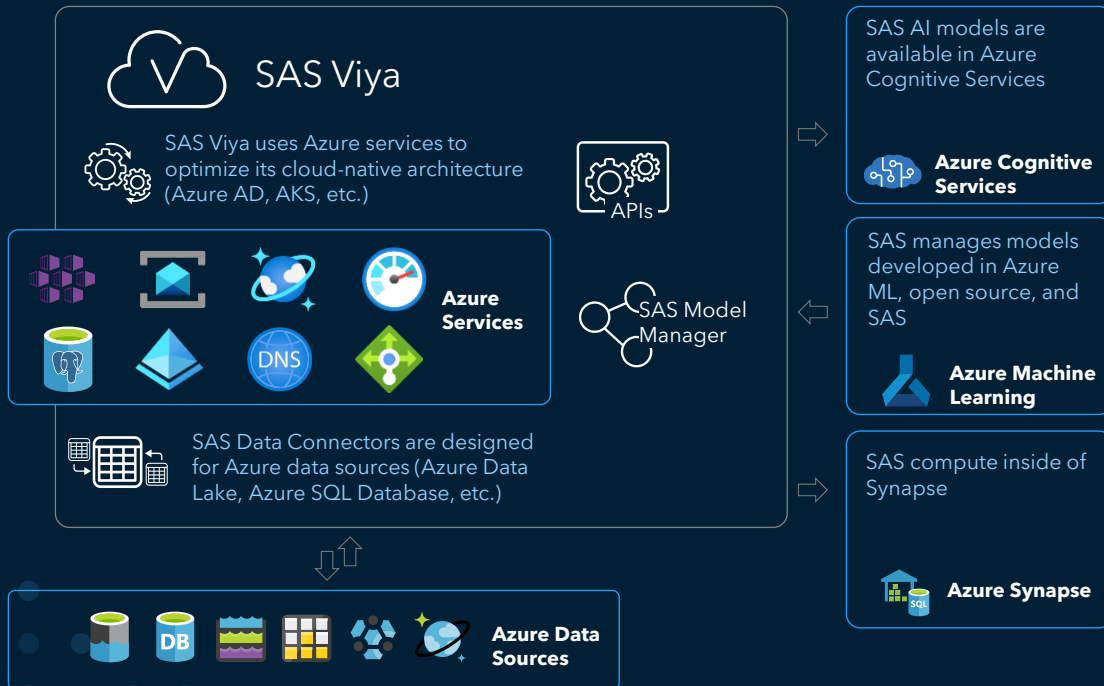
Together, we're accelerating the power of AI for everyone

LEARN HOW >

The graphic features the SAS and Microsoft logos at the top. Below them, the text 'WELCOME TO THE EMPOWERED CLOUD' is written in large, bold, white letters. Underneath that, a smaller line of text reads 'Together, we're accelerating the power of AI for everyone'. At the bottom left, there is a blue button with the text 'LEARN HOW >'. To the right of the button are three stylized blue cloud shapes, with the largest one on the right having a muscular arm flexing, symbolizing strength and empowerment.

- Microsoft Azure is the exclusive public cloud provider for SAS Cloud
- SAS and Microsoft have built integrations across Microsoft's entire cloud portfolio, including Azure, Dynamics 365, Microsoft 365, and Power Platform
- SAS solutions are listed on the Azure Marketplace

## Technology Integration Vision\*



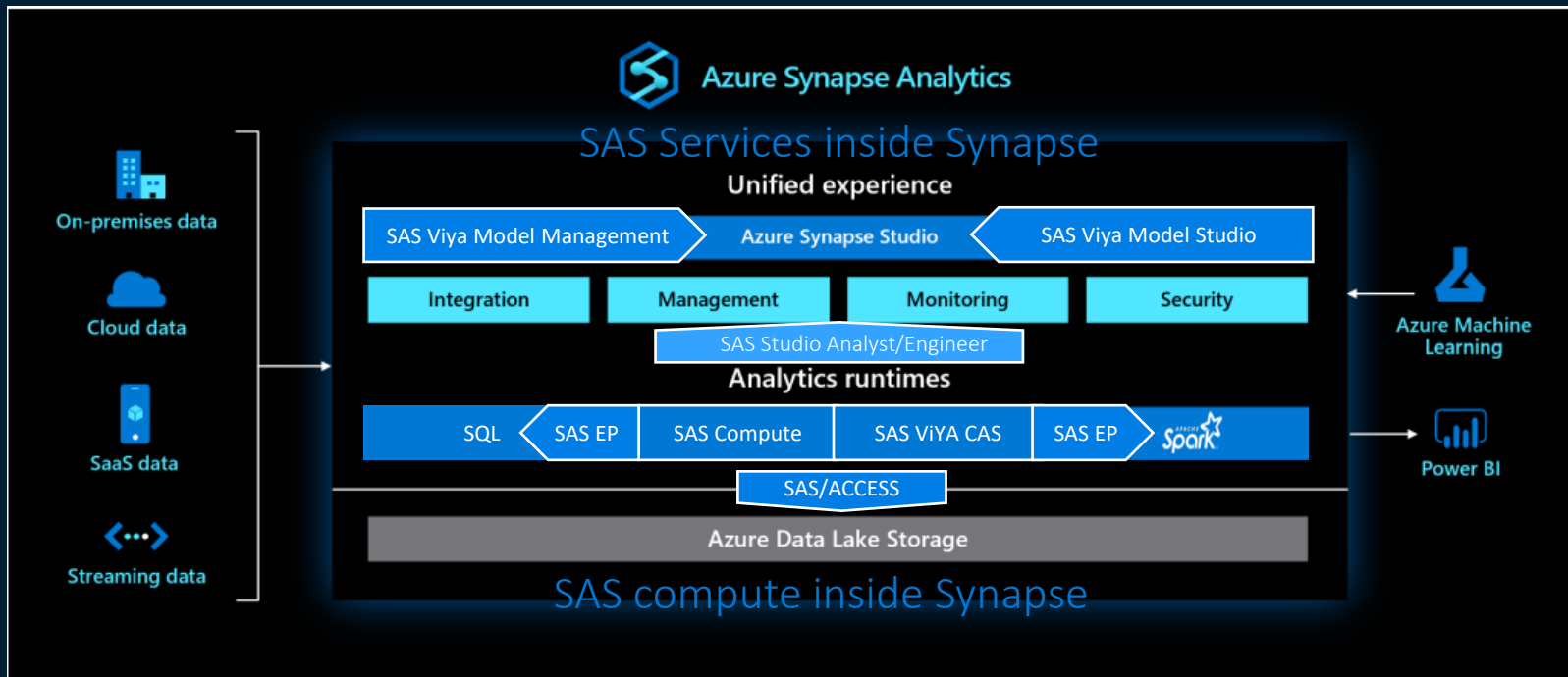
## Benefits

- **Cloud-native** integration optimized resources
- Easily **access all data**
- **Develop advanced models** with any language
- **Manage and govern** all models across all clouds
- **Accelerate** AI model development and management

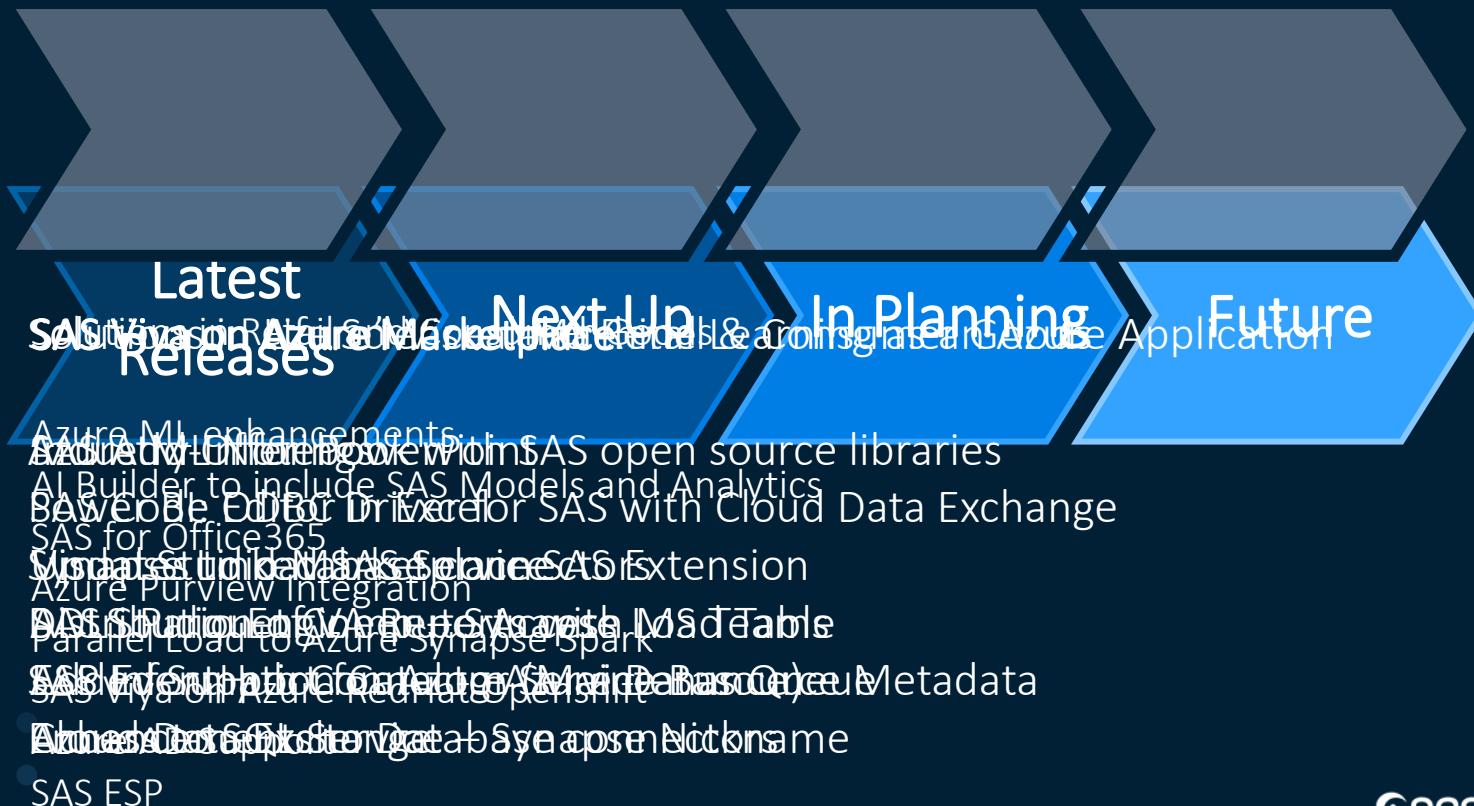
\* consult the co-development roadmap for integration timelines

# Azure Synapse Analytics and SAS

## Seamless Integration for Greater Agility



# SAS and Microsoft Integration Roadmap





## INTEROPERABLE DATA, PROCESSES AND ANALYTIC WORKFLOWS

Create holistic patient health profiles and reduce time to insight

## TIMELY INSIGHTS AT THE POINT OF DATA CREATION

Cloud-based analytics reduces latency and increases the efficiency of health analytics.

## GREATER AGILITY TO ADDRESS UNANTICIPATED OPPORTUNITIES

Adapt to the rapidly transforming health data landscape

## FLEXIBLE MODERN FRAMEWORK

Leverage embedded AI capabilities, analyze IoMT data in-stream, or integrate open source models

# SAS Health and Microsoft Azure



Democratize health analytics and AI in the cloud. Unlock even more critical data insights to improve health outcomes within a leading analytics platform. Drive interoperability across health data, processes and analytic workflows.



### SPEED TO INSIGHT

Increase speed, scalability and expand the catalog of analytics solutions to help Mercy deliver a new care model

### INNOVATION

Real world evidence data will inform further development of therapies and clinical informatics for improved patient outcomes

### COLLABORATION

Support newly formed research consortium with other health systems, universities and regional thought leaders

## Customer success: Mercy



“At Mercy, we’re focused on how to continuously improve patient care and outcomes and realize the role of data analytics, machine learning in bringing that focus to light. Working with SAS and Microsoft, we can capitalize on analytics software and the Azure cloud platform to strengthen our ability to harness Real World Evidence for improved outcomes and more informed care.”





# Q and A

[sas.com/microsoft](https://sas.com/microsoft)