

Move the World Forward

by scaling human observation and decision-making



**SUPPLY CHAIN
ISSUES**



**DIGITAL
TRANSFORMATION**



**FINANCIAL
VOLATILITY**



**ENVIRONMENTAL
RISKS**



**WORKFORCE
MOVEMENT**

A large cargo ship is docked at a port. In the foreground, a blue container truck is parked on the left, and a yellow forklift is operating on the right. The scene is set against a bright, hazy sky with a sun flare effect. The text "SUPPLY CHAIN ISSUES" is overlaid in the center.

SUPPLY CHAIN ISSUES

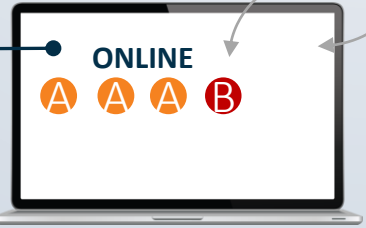
Normal

Disruption

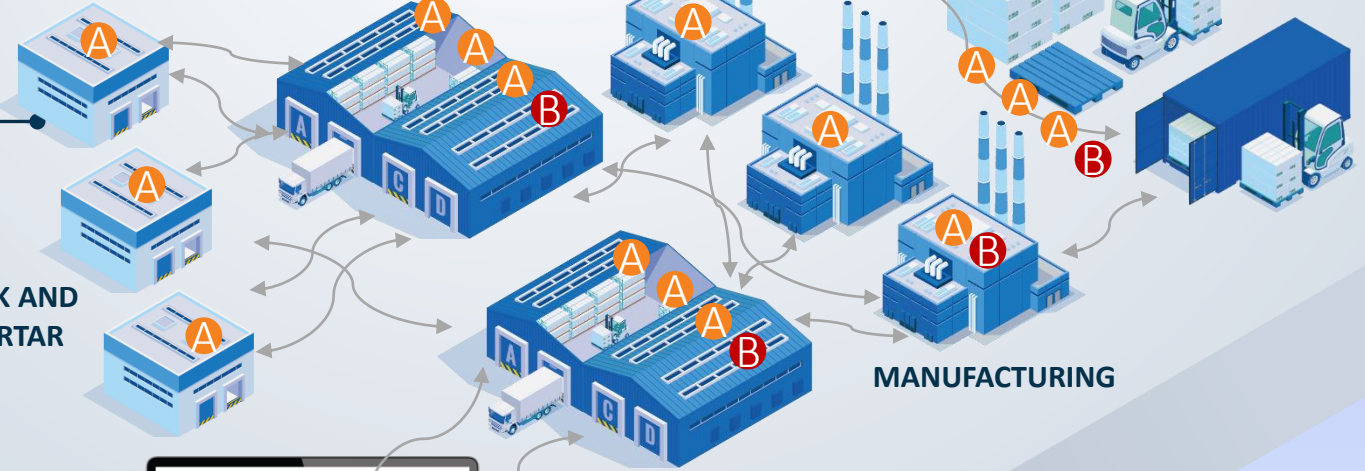
New Normal



BRICK AND MORTAR



DISTRIBUTION CENTER



SUPPLIER

MANUFACTURING

SUPPLY CHAIN ISSUES



DIGITAL TRANSFORMATION

DIGITAL TRANSFORMATION

drivers



Increased Competition



Consumer Expectations



AI and Cloud Technology

SAS INNOVATE
ON TOUR

what



Optimize Operations



Extraordinary Consumer Experience

how



ModelOps

benefits



Efficiency



Effectiveness



FINANCIAL VOLATILITY

FINANCIAL VOLATILITY

Ongoing Governance is Critical – also applicable to all ML/AI models in other industries

“My model and data are ready to be moved to production.”

GOVERN



CENTRALLY MANAGE

“I need to embed and execute my model.”

EMBED



CREATE EFFICIENCIES

“I need to monitor and refine my model over time.”

MONITOR



CONTROL & ADJUST

“I want this process to be automated”

AUTOMATE

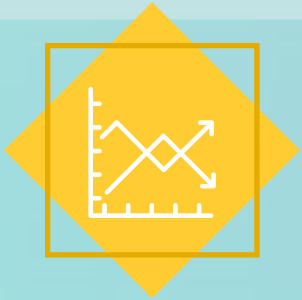


EXPEDITE ANSWERS

ENVIRONMENTAL RISKS



ENVIRONMENTAL RISK QUANTIFICATION CHALLENGES



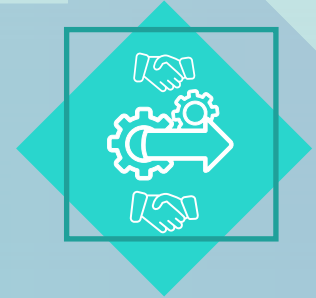
Lack of empirical Data



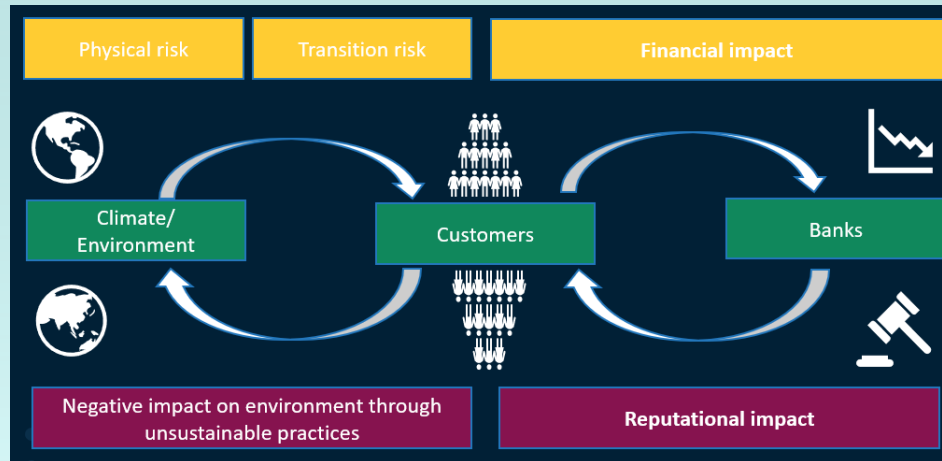
Uncertainty over long horizon



Geographical and sector variations



Technology & Society developments



WORKFORCE MOVEMENT





WORKFORCE MOVEMENT

- More acceptance of Working From Home – also
- Cloud
 - Remote hosting
 - Follow-the-sun support models

MODELS



**SUPPLY CHAIN
ISSUES**

MODELOPS



**DIGITAL
TRANSFORMATION**

GOVERNANCE



**FINANCIAL
VOLATILITY**

DATA



**ENVIRONMENTAL
RISKS**

CLOUD



**WORKFORCE
MOVEMENT**

OPPORTUNITIES & INCENTIVES TO INNOVATE



CLOUD

COMPOSITE AI

OPERATIONAL & ORGANISATIONAL CHALLENGES



**ENGAGE
EVERYONE AND
DEPLOY
EVERYWHERE**


SAS INNOVATE
ON TOUR



**EMPOWER
THE
ECOSYSTEM**



**ENSURE
TRANSPARENCY
AND TRUST**

A hand is shown from the left, reaching towards a glowing digital globe. The globe is composed of a grid of white dots connected by thin white lines, with a blue and white color scheme. The globe is surrounded by a network of white lines and dots, creating a sense of global connectivity. The background is a gradient of blue and purple, with a diagonal line separating the light blue area on the left from the darker blue area on the right. The globe is the central focus, with a bright yellow and orange glow emanating from the point where the hand touches it.

**Engage everyone
and deploy everywhere**



SAS INNOVATE
ON TOUR

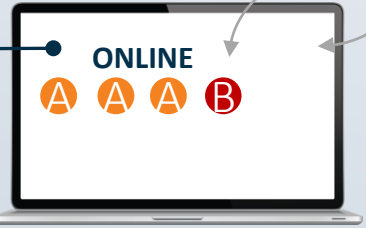
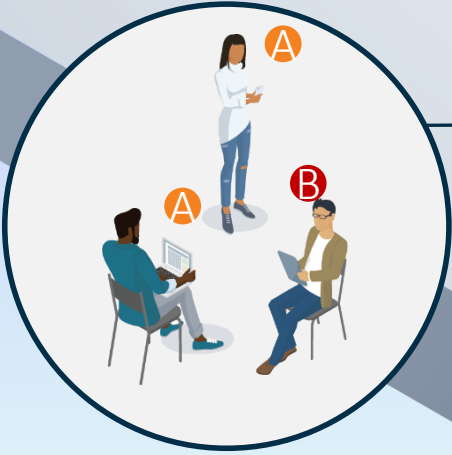
Normal

Disruption

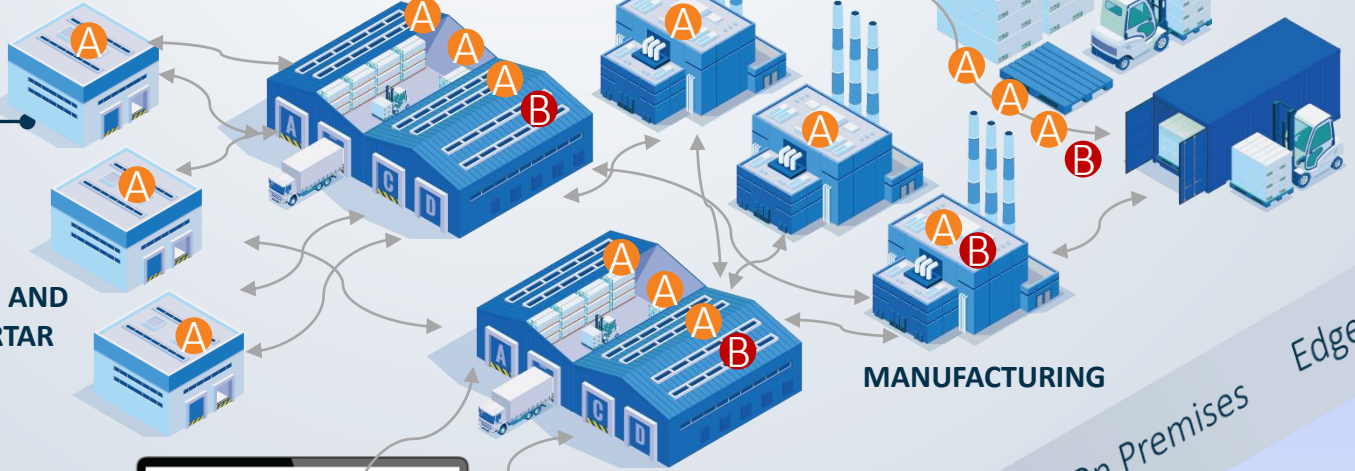
New Normal



BRICK AND MORTAR



DISTRIBUTION CENTER



MANUFACTURING

SUPPLIER

On Premises Edge

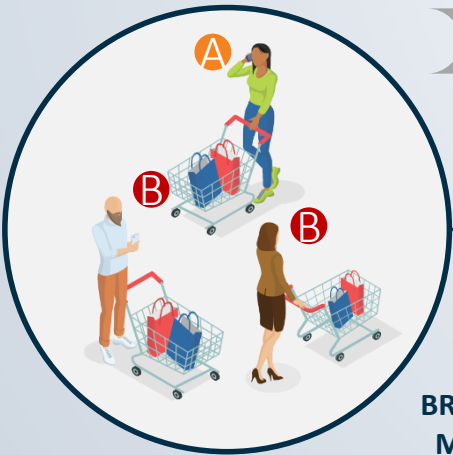


SUPPLY CHAIN ISSUES

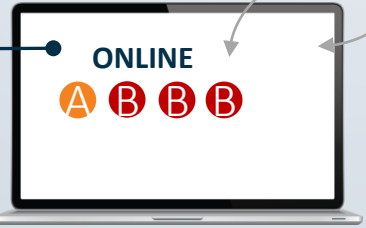
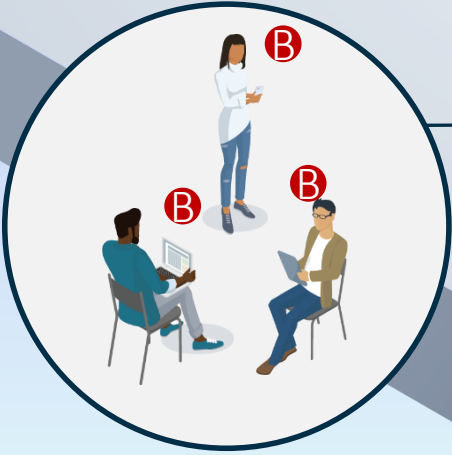
Normal

Disruption

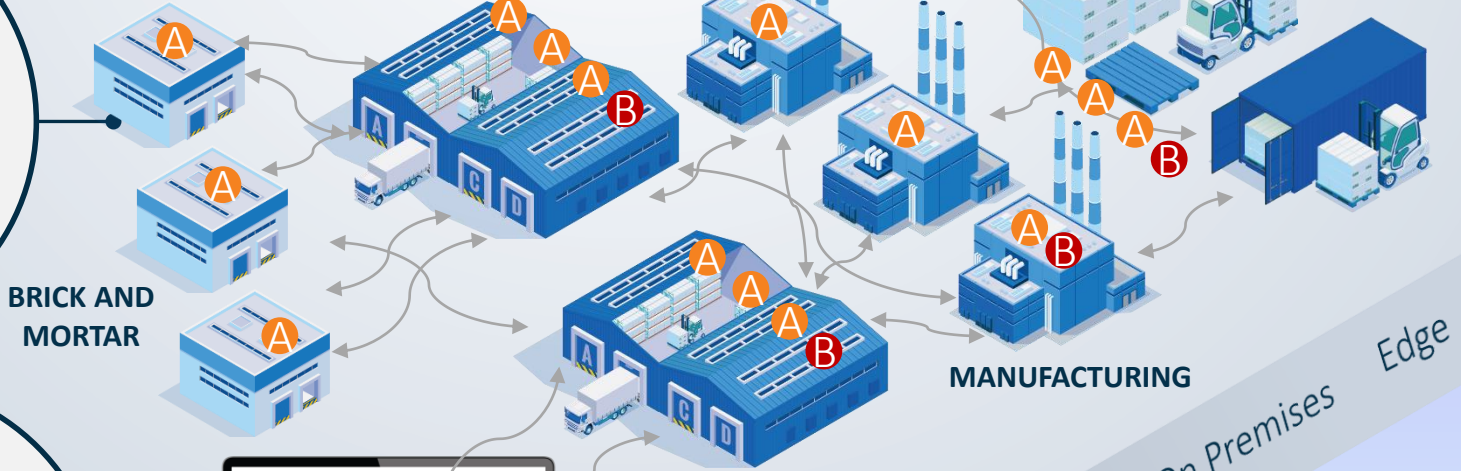
New Normal



BRICK AND MORTAR



DISTRIBUTION CENTER



MANUFACTURING

SUPPLIER

On Premises Edge

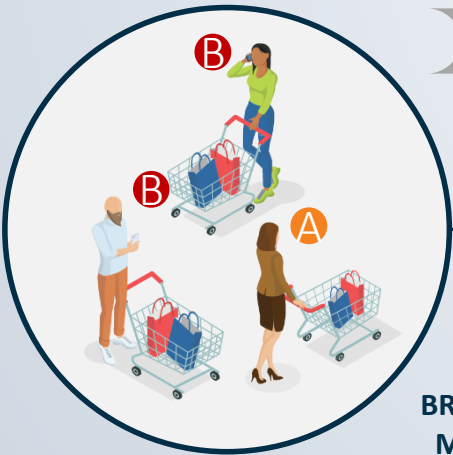


SUPPLY CHAIN ISSUES

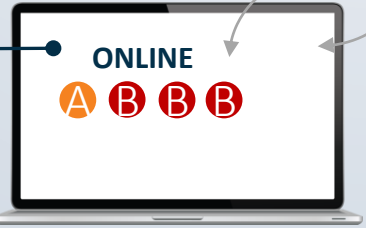
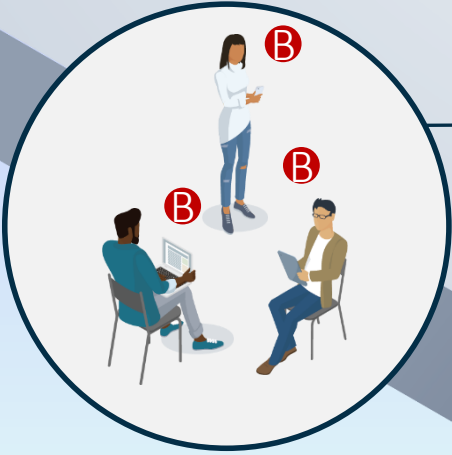
Normal

Disruption

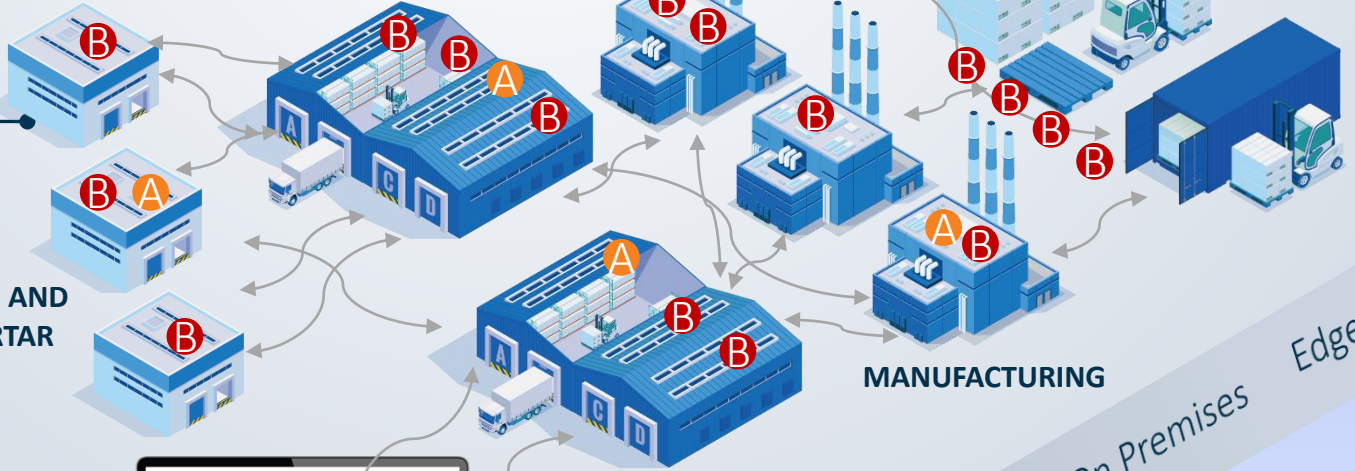
New Normal



BRICK AND MORTAR



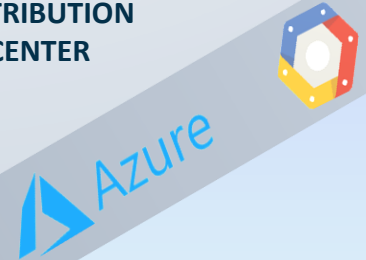
DISTRIBUTION CENTER



MANUFACTURING

SUPPLIER

On Premises Edge



SUPPLY CHAIN ISSUES

Normal

Disruption

New Normal

Manufacturing & Supply Chain

- Supply Chain Analytics
- Computer Vision
- Intelligent Monitoring

Customer Intelligence

- CI-360
- Intelligent Demand Planning
- Pricing Optimization

Logistics

- Store & DC Routing
- Inventory Optimization
- Sizing & Packing Optimization

ONLINE

A B B B

DISTRIBUTION CENTER

MANUFACTURING

On Premises Edge



YOUR BUSINESS





Georgia-Pacific

Reduced unplanned downtime by **30%**
Improved equipment efficiency by **10%**
15,000 models running on SAS



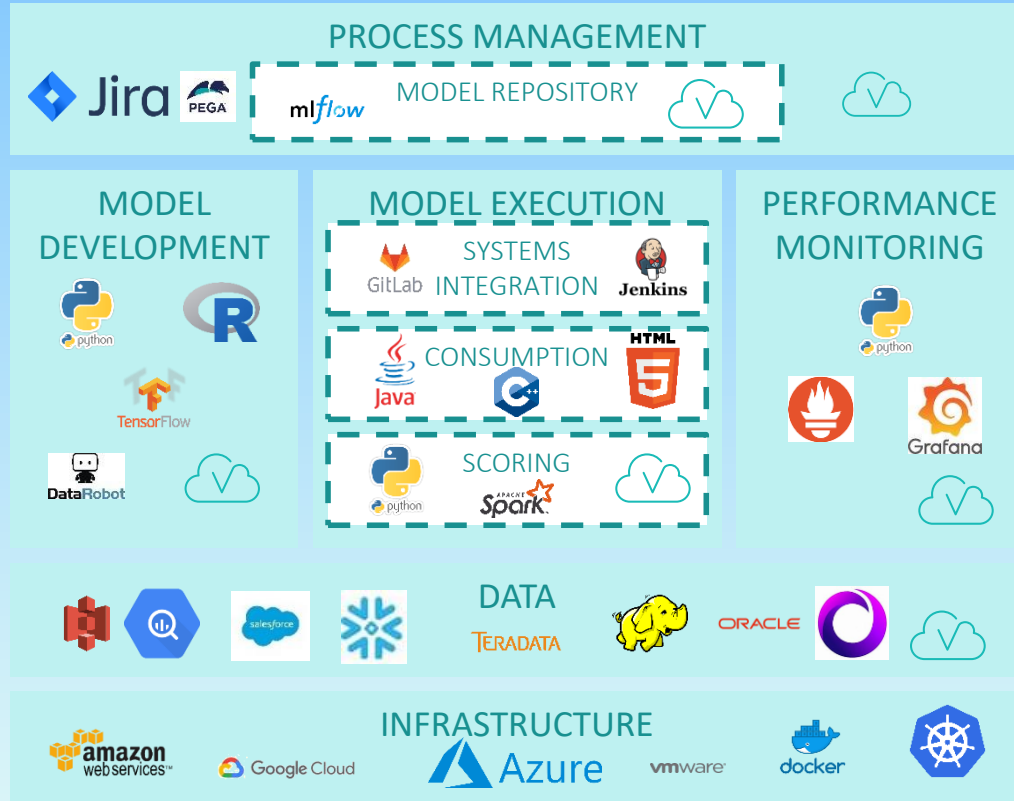
Empower the ecosystem

SAS INNOVATE
ON TOUR

Copyright © SAS Institute Inc. All rights reserved.

sas

EMPOWER THE MDELOPS ECOSYSTEM



auxmoney



UNIVERSITY OF ALBERTA

*“If colleagues prefer to program certain procedures in **Python or in R**, that’s not a problem, because open source code can be easily integrated into SAS.”*

Thorsten Foltz, Senior Data Engineer,
auxmoney

*“There were **no closed doors** with SAS Viya. People who were pursuing other programming languages were not blocked out and could still benefit from a supported platform that met our needs.”*

**Dr. Lawrence Richer, Vice Dean of
Research, University of Alberta**



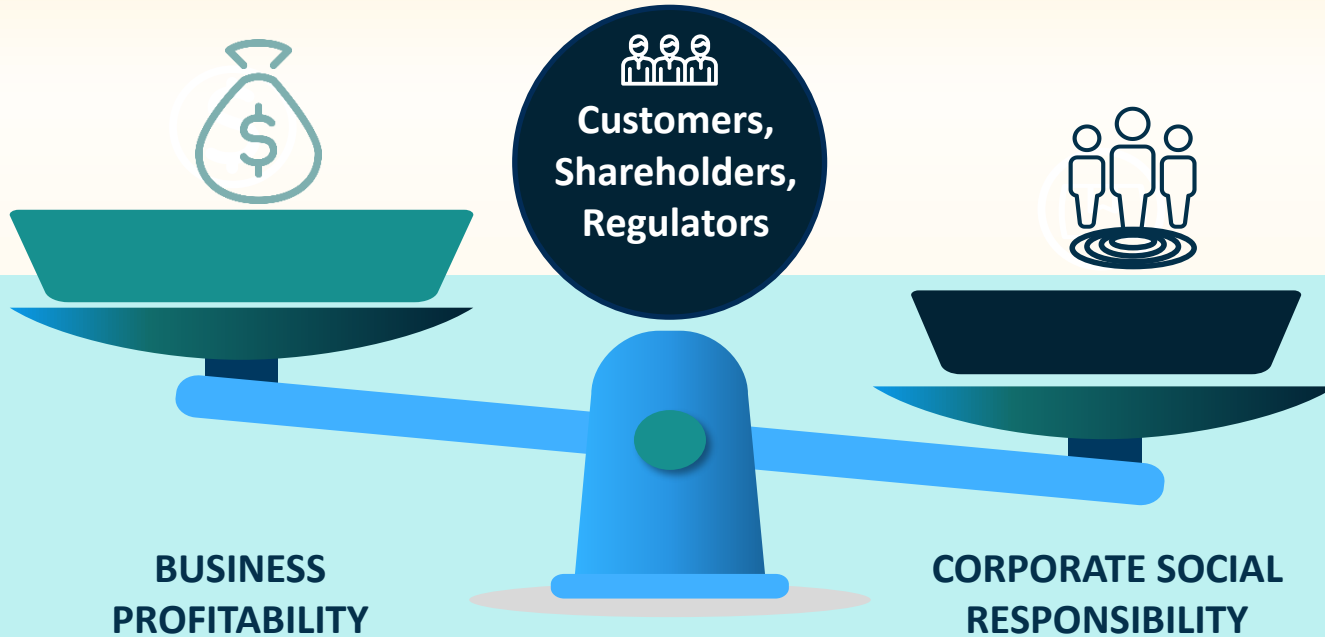
**Ensure transparency
and trust**

SAS **INNOVATE**
ON TOUR

**DRIVE ADOPTION &
IMPROVE
PRODUCTIVITY**

**CREATE NEW JOBS
& INCREASE
INNOVATION**

**IMPROVE TRUST &
SOCIETAL
ACCEPTANCE**



**Amsterdam University Medical Center uses
auditable and explainable AI to improve
cancer screenings.**

“We needed an explainable model ... SAS was the most trustworthy solution we found.”

Dr. Geert Kazemier

MODELS



**SUPPLY CHAIN
ISSUES**

MODELOPS



**DIGITAL
TRANSFORMATION**

GOVERNANCE



**FINANCIAL
VOLATILITY**

DATA



**ENVIRONMENTAL
RISKS**

CLOUD



**WORKFORCE
MOVEMENT**

OPPORTUNITIES & INCENTIVES TO INNOVATE



CLOUD

COMPOSITE AI

OPERATIONAL & ORGANISATIONAL CHALLENGES



**ENGAGE
EVERYONE AND
DEPLOY
EVERYWHERE**

SAS INNOVATE
ON TOUR



**EMPOWER
THE
ECOSYSTEM**



**ENSURE
TRANSPARENCY
AND TRUST**

Thank You