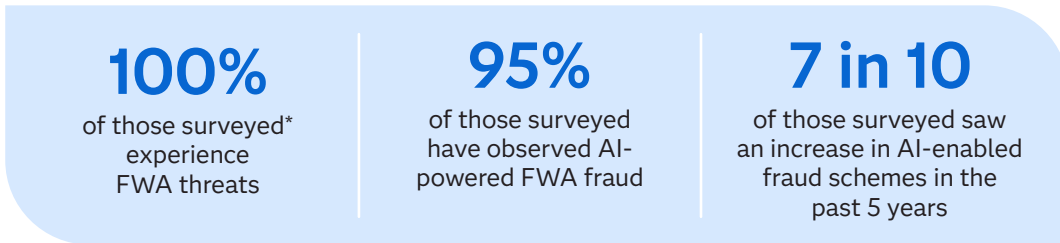
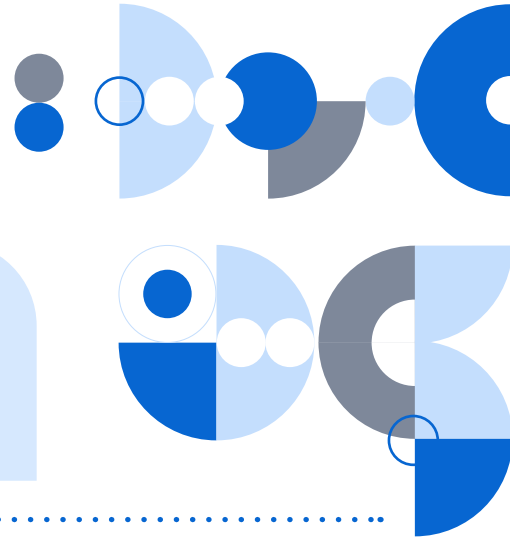


Combating fraud to maximize public program efficiency

Public sector organizations worldwide face a growing fraud, waste and abuse (FWA) crisis that drains billions from government budgets and erodes public trust.

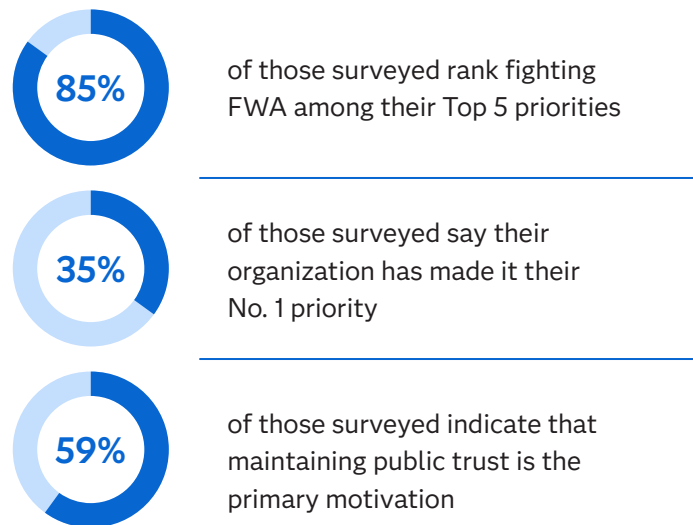
As FWA schemes become more sophisticated and AI-enabled, many public sector organizations are prioritizing FWA prevention and turning to data and AI to strengthen their processes.



The impact is staggering

- 1 Respondents estimate that tackling FWA effectively could save around **16%** of their budget
- 2 Nearly **100%** of those surveyed report that FWA damages public trust
- 3 **3 in 4** of those surveyed say trust has been "greatly" impacted

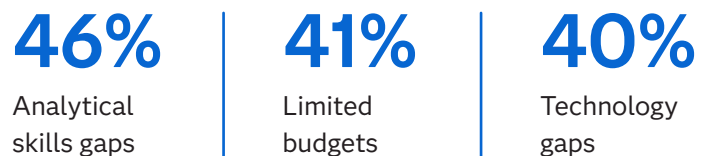
Fighting FWA is now a top strategic priority



However, most lack sufficient resources

- Only **1 in 10** of those surveyed say their organization has all the tools and resources needed
- **Nearly 1/3** face significant resource limitations and access

Key barriers:



AI is transforming FWA detection capabilities

Over 50% of those surveyed use AI to fight FWA

30% currently use GenAI solutions, and **over 90%** expect to use GenAI in the next 2 years

Top benefits:



57%

Greater workforce efficiency



39%

More FWA detection



37%

Faster identification

The AI adoption curve is accelerating

- Network analysis usage is projected to increase from **32% to 87%** within 2 years
- LLM adoption is expected to grow nearly **5x from 18% to 84%**
- Machine learning implementation is set to expand from **36% to 84%**

Success comes with some implementation challenges

48%

Privacy and security concerns

43%

Ensuring trust, transparency and bias mitigation

47%

Data quality and availability issues

36%

Integration with existing systems

Prevent FWA before it happens with SAS data and AI solutions

SAS offers advanced data and AI solutions that help public sector organizations reduce their losses from fraud, waste and abuse. Our holistic fraud risk view helps identify suspicious activities and hidden connections, while our analytics models and intelligent case management help optimize and prioritize investigators' time – all while maintaining robust data security and integrity to protect public trust.

Visit sas.com to learn more about our data and AI FWA detection solutions.



To learn more about how the public sector is embracing data and AI to battle fraud, waste and abuse, read the full global report, *Trust and transparency: Combating fraud to maximize public program efficiency*.

**The survey report presents findings from 1,100 senior and mid-level global public sector employees responsible for monitoring fraud, waste and abuse within their organizations.*

Survey respondents work across a range of organizations and departments: public sector infrastructure, transportation and government utilities; benefit delivery organizations; general public services; investigative and oversight organizations; tax, revenue and customs organizations; social services; security intelligence; justice and public safety; and national security.

Their job titles include chief financial officer, procurement director, fraud examiner, auditor and investigator. Respondents are based in the Americas, EMEA, APAC and META countries.