



# AI For Everyone

Udo Sglavo

Vice President, Applied AI and Modeling R&D

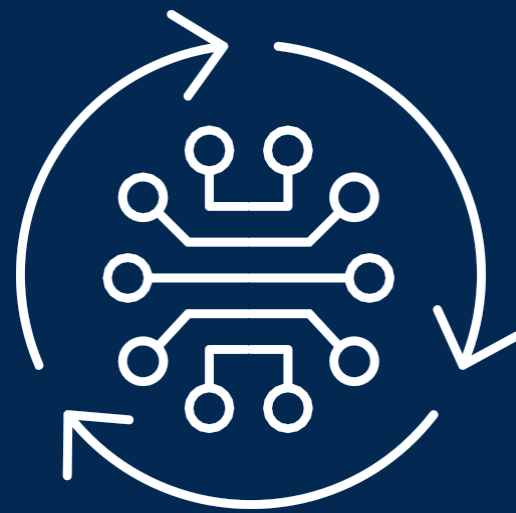
# AI for Everyone

On-Demand AI

Scaling AI Everywhere for Everyone



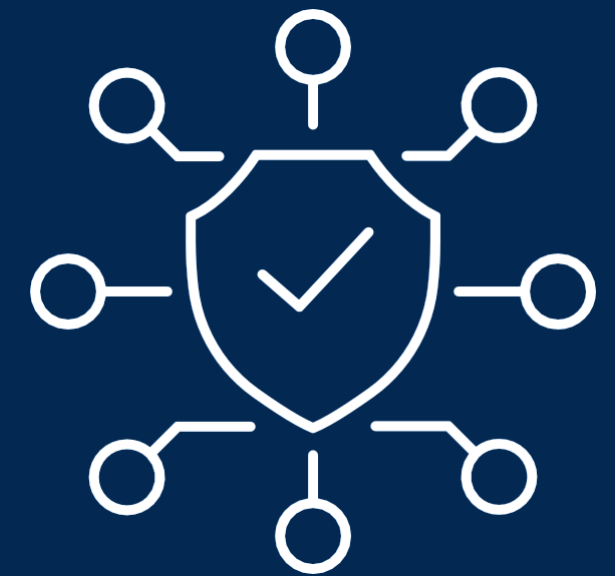
DATA



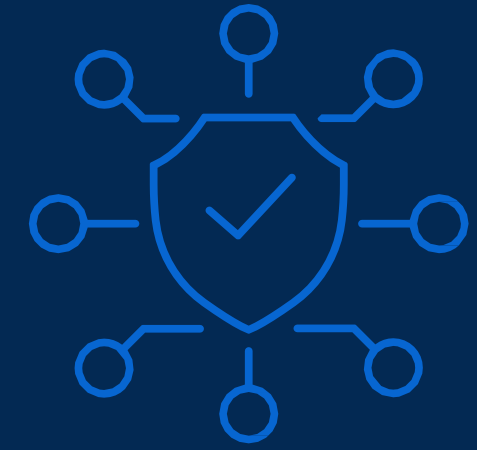
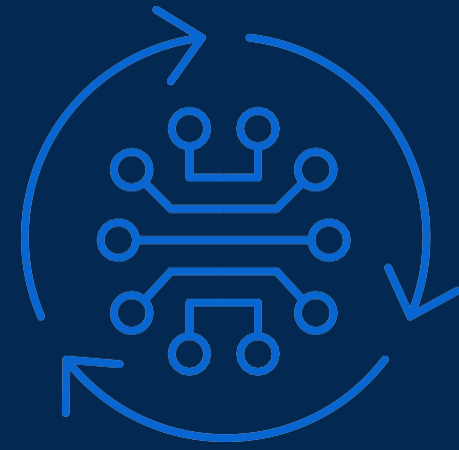
AI TOOLS



INFRASTRUCTURE



PATCHES



**Data and AI can become a  
burden to your business.**



Security



Inability to Scale

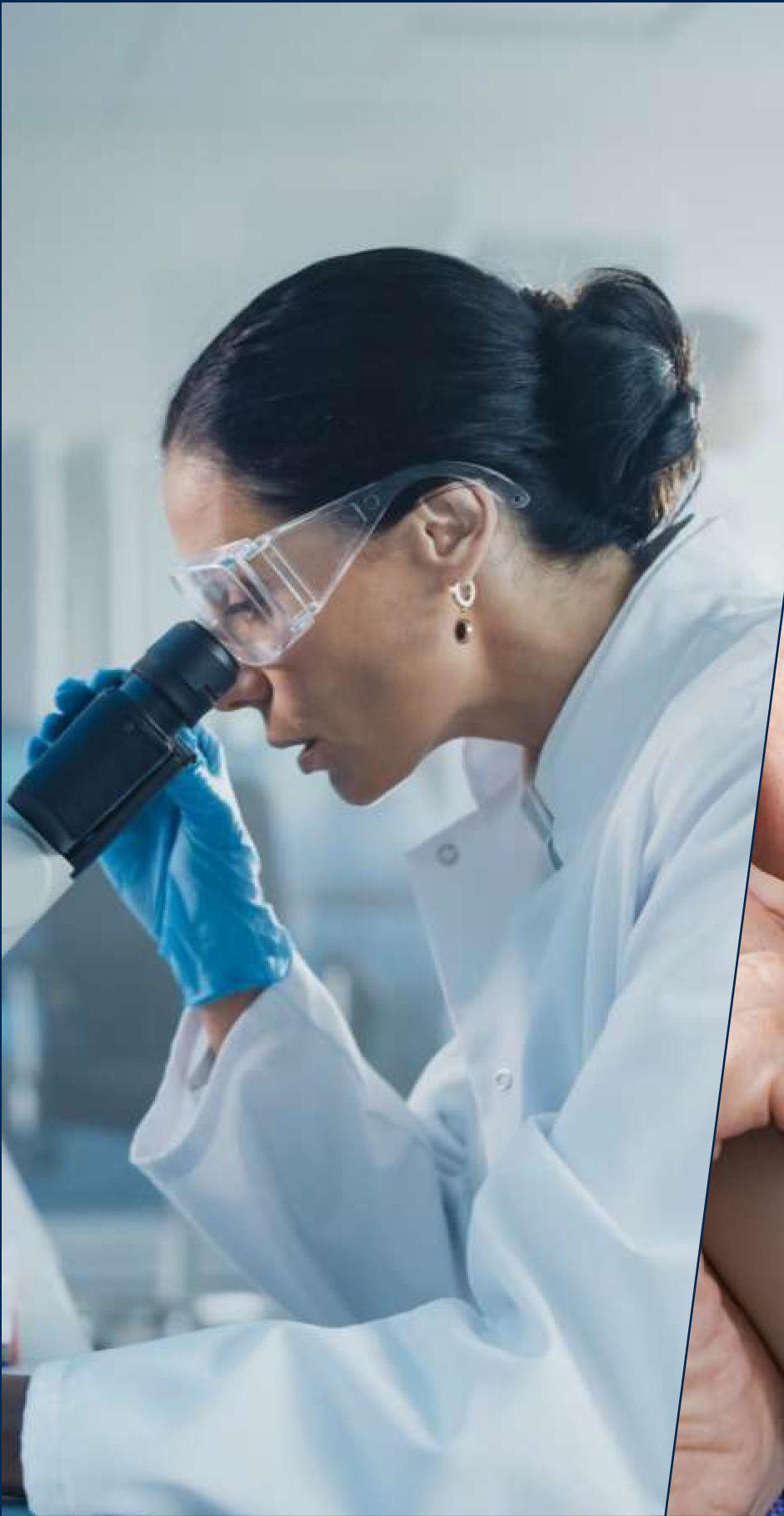


Compliance



Talent Famine

What **more** could you do?



Identify

Prevent

Provide

Predict

**Deriving value** from your  
data and AI Investments.

**We know your problems,  
concerns and goals.**



TIME



FOCUS



SAFETY

A woman with dark hair pulled back, wearing a blue top and a dark earring, is shown in profile from the chest up, looking upwards and to the right. The background is a bright, out-of-focus indoor setting. On the left side of the image, there is a large blue circular graphic containing white text and a quote icon.

“

...my CIO will  
**never** go for  
hosting in  
your cloud.





**NIST Security Standard**



**GovRAMP and  
FedRAMP**



**G-Cloud**



**Protected-B**



**GovCloud**



**IRAP**

# AI for Everyone

On-Demand AI

Scaling AI Everywhere for Everyone



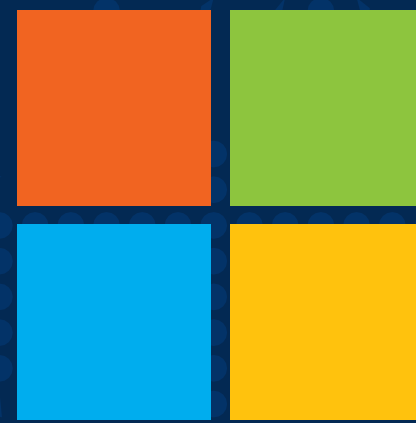
sas + intel

#SASInnovate

Copyright © SAS Institute Inc. All rights reserved.

sas **innovate**  
on tour 2025

The SAS logo, featuring a stylized white 'S' followed by the lowercase letters 'sas' in a white, rounded sans-serif font. Small registered trademark symbols (®) are placed below the 'S' and the final 's'.



The word 'Microsoft' in a white, bold, sans-serif font, positioned to the right of the Microsoft logo.

A world map composed of a grid of small blue dots, with larger white dots scattered across the continents to represent partner locations. A blue button with the text "Find a Partner" and a white mouse cursor icon is positioned over the map.

Find a Partner

Visit:  
[sas.com/partners](https://sas.com/partners)

#SASInnovate

Copyright © SAS Institute Inc. All rights reserved.

sas **innovate**  
on tour 2025

# AI for Everyone

On-Demand AI

Scaling AI Everywhere for Everyone

## OUR VISION

To be the **most trustworthy data**  
**and AI partner** that **powers the**  
**world's decisions.**