



# Modernize evidence-based policing with data and AI

Smarter tools. Faster insights. Stronger community trust.

Today's police forces face a mountain of challenges. They're navigating tech-savvy criminals, fragmented data, strained resources and rising public scrutiny. The tools of yesterday are not always sufficient to get the job done.

To overcome these challenges, law enforcement professionals practicing evidence-based policing must work smarter and more transparently by harnessing **data and AI** to catch perpetrators and build strong, airtight cases.

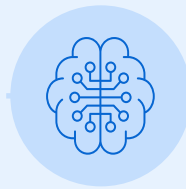
## Modernizing evidence-based policing with AI can help departments:



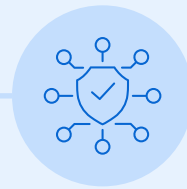
Detect and address **emerging crime patterns.**



Strengthen **transparency and procedural fairness.**



Establish AI-driven **intelligence retrieval.**



Prioritize and optimize police **manpower allocation.**

## Evidence-based policing by the numbers:

AI in policing is up **60%** over the last five years.

Facial recognition error rates **<1%**.

Predictive analytics reportedly cut crime by **~15%**.

\*Source: worldmetrics.org



As noted by **Chief Shon F. Barnes** of the Madison Police Department,

It's crucial that we don't dismiss these strategies simply because they require effort or because they challenge traditional notions of policing. The reality is that real, meaningful change takes work, and we must be willing to invest the time and resources necessary to implement these evidence-based approaches effectively."



Resistance and inertia can hinder progress when transformation arrives – but law enforcement agencies that prepare early see better results. This white paper offers **five strategies** on how policing can undergo transformational change and effectively integrate AI.

### End-to-end investigation on a single platform

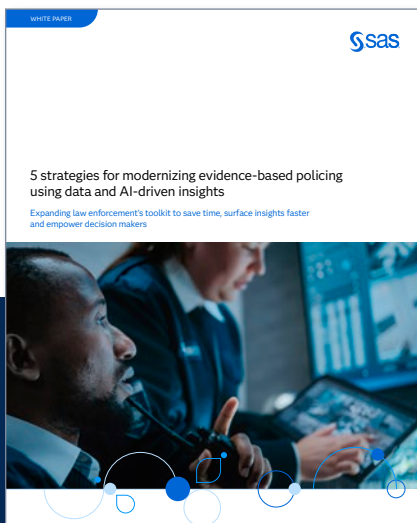
The Australian Federal Police implemented a SAS AI investigation management solution (IMS) that helps officers document cases and manage intelligence. Designed for strategic and in-depth investigations, it aligns with AFP standards and enables investigators to manage cases from start to finish on a single platform.

### 35 – 50% fewer false positives

In an East Asian country, a police agency uses a SAS AI-powered platform for anti-money laundering. By combining AI, rules and risk scoring, case assignment time dropped from days to hours, and false positives were reduced by 35% to 50%.

### US\$6.9M recovered with AI

The North Carolina Department of Insurance built an AI-powered fraud investigation system on SAS Managed Cloud Services using network analysis to quickly detect links between fraudulent transactions. It helped recover \$6.9 million, and on-time investigation success rose from 60% to 98.7%.



Trusted by 1,600+ agencies in 134 countries, SAS delivers proven tools and deep law enforcement expertise to help you modernize confidently.

→ [Get the complete roadmap to implementing ethical, effective AI for smarter policing.](#)

