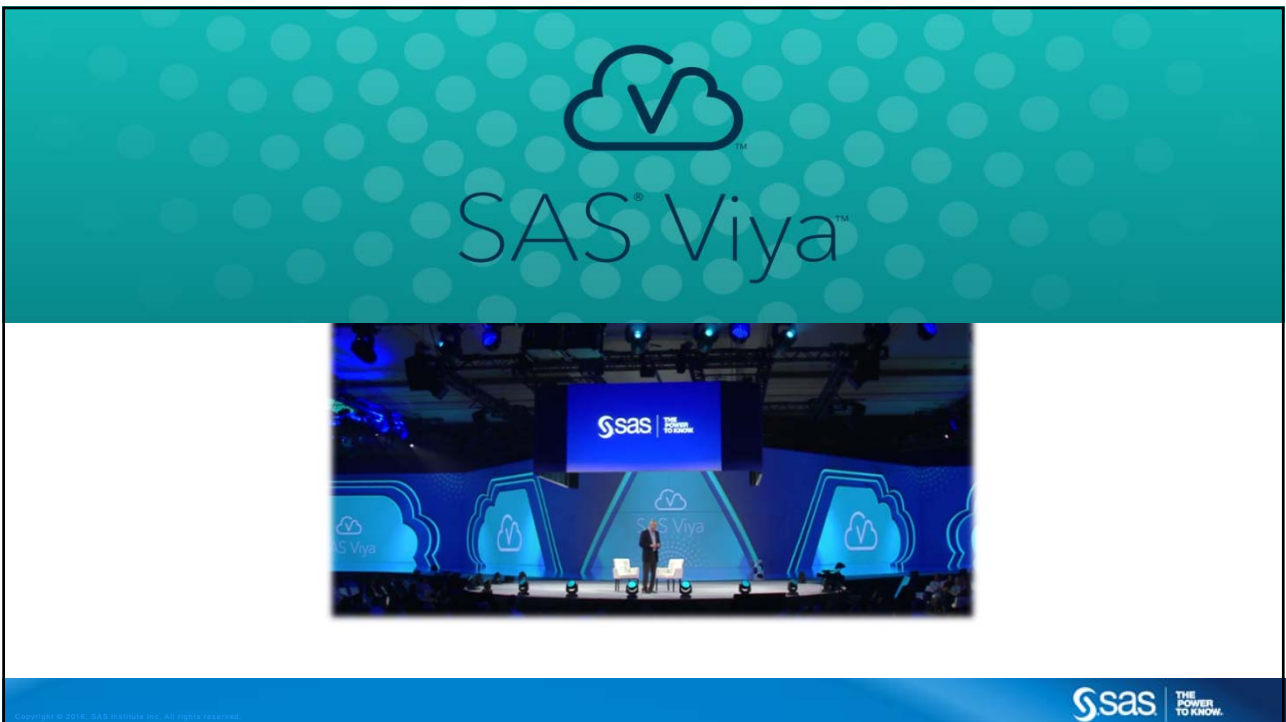





SAS VIYA™
JOHAN ELFMAN
ROLAND BALI

sas
THE POWER TO KNOW.

Copyright © 2015, SAS Institute Inc. All rights reserved.



SAS Viya™



sas | THE POWER TO KNOW.

Copyright © 2015, SAS Institute Inc. All rights reserved.

SAS® Viya™ **ARKITEKTUR OCH PLATTFORM**



SAS® Viya™ **DRIVKRAFTER**

ANVÄNDNING

Analys ska stödja olika typer av organisationer med deras beslut och affärsprocesser

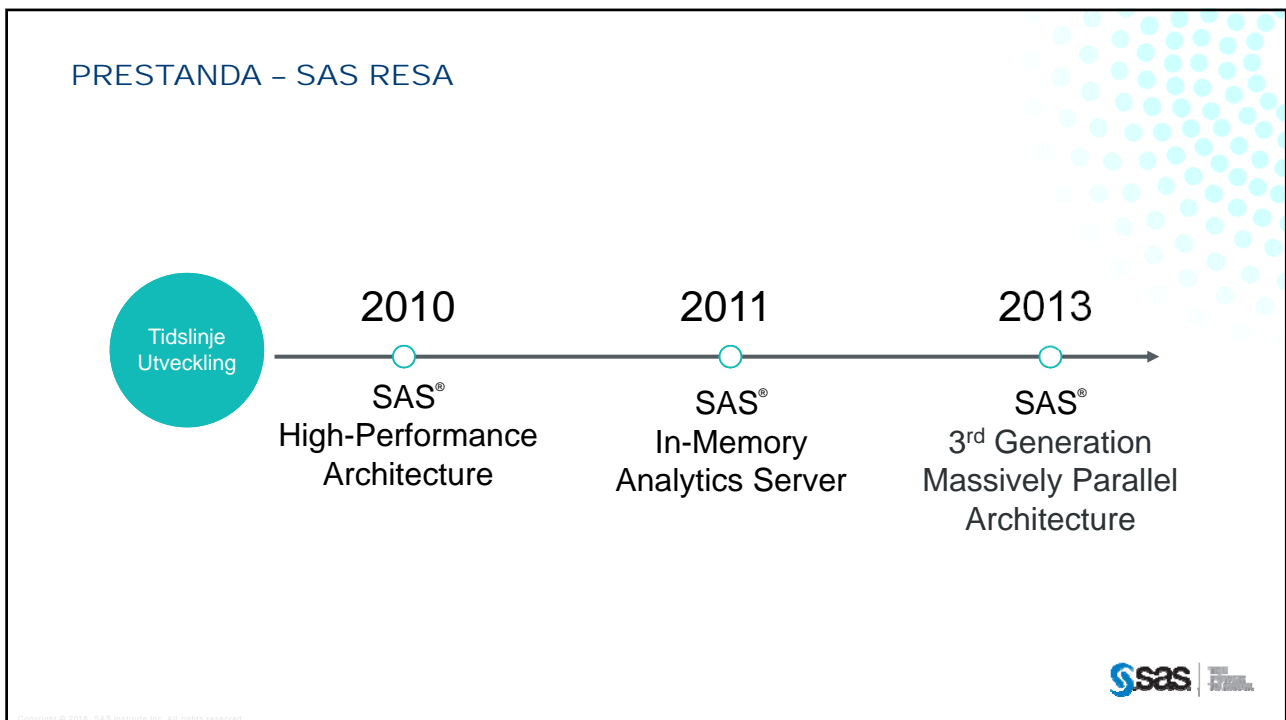
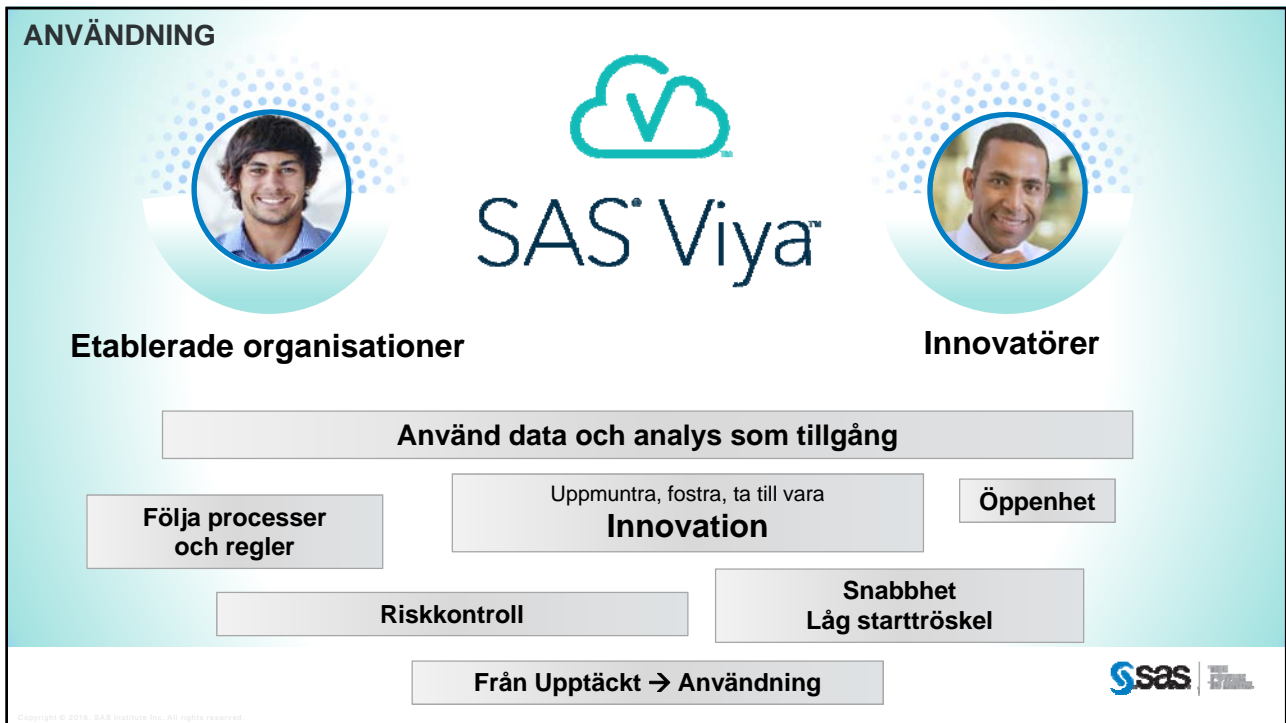
PRESTANDA

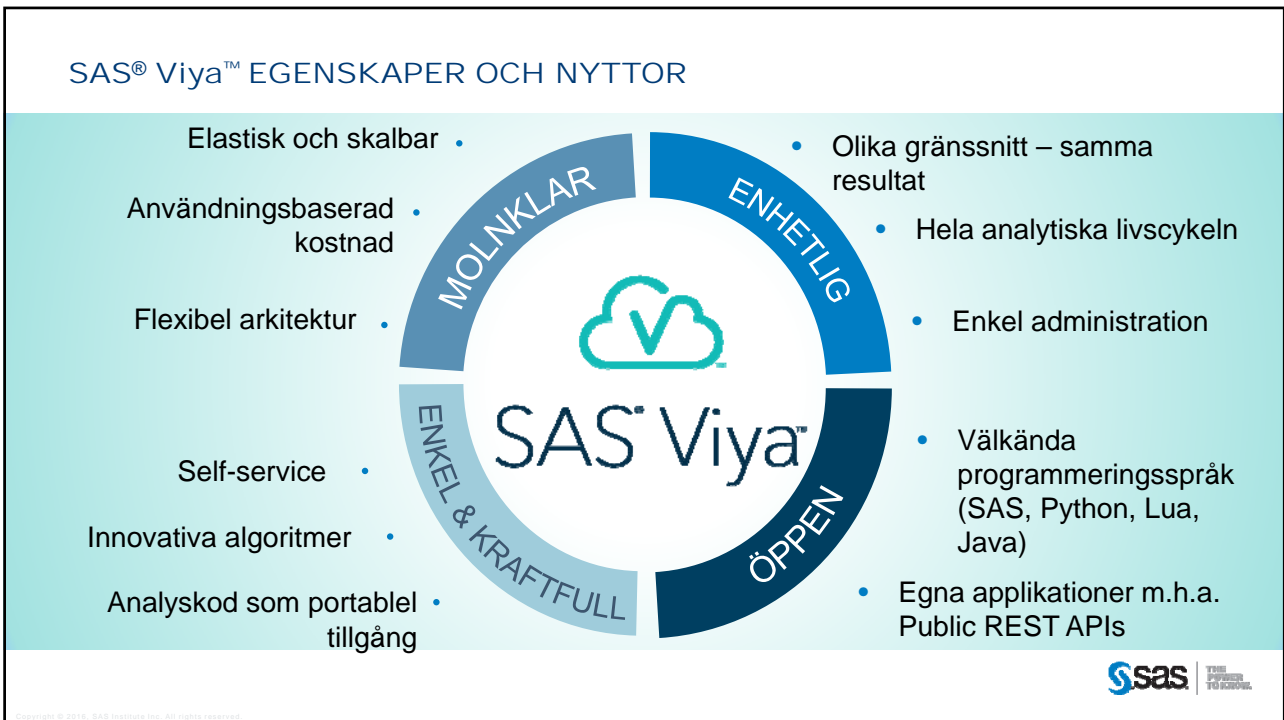
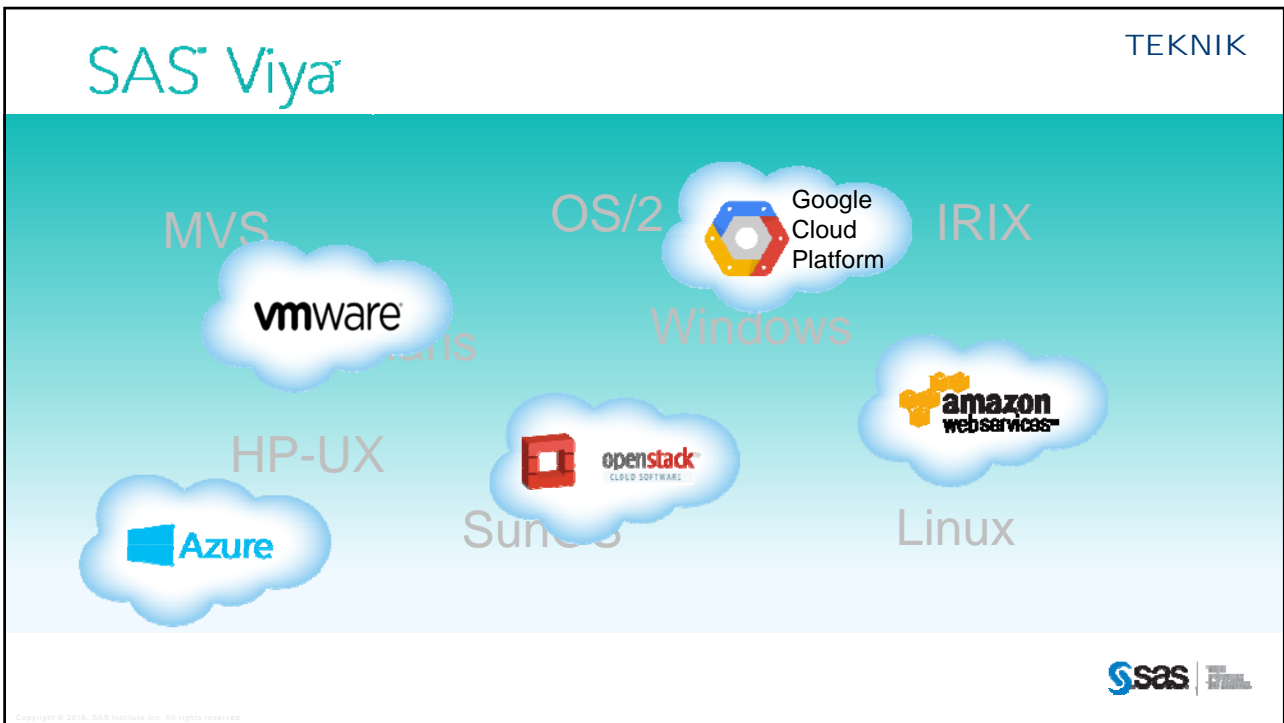
Mer data och högre krav på snabbhet

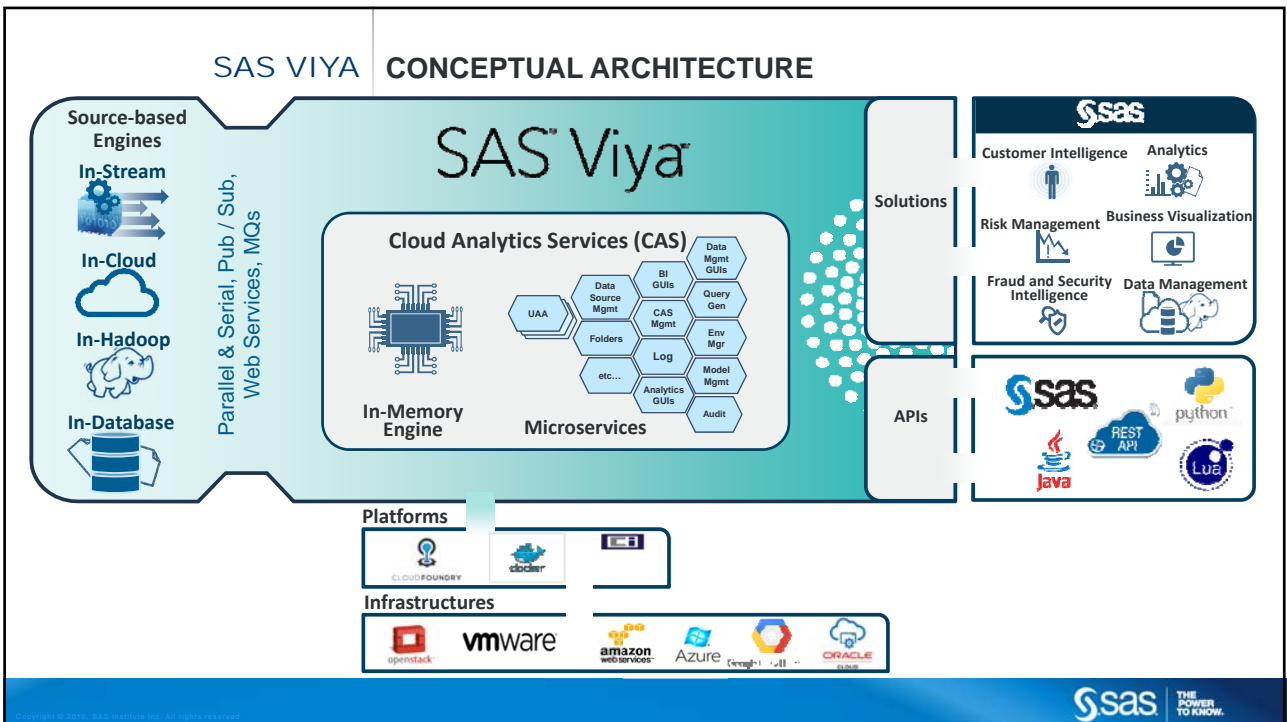
TEKNIK

Stötta nya typer av plattformar och integrationer









SAS VIYA
ARKITEKTUR

CLOUD ANALYTIC SERVICES

- Tillgänglighet
 - Lägg till, ta bort noder
- Gränssnitt
 - Java, Lua, Python
- Sessioner
 - Övervaka, stoppa och hantera resursutnyttjande per session
- Paging
 - Allt data behöver inte rymmas i minnet

SAS VIYA
ARKITEKTUR

DEMO – WEBAPPLIKATION MOT SAS VIYA REST API

SAS VIYA
ARKITEKTUR

TA MED ER FÖLJANDE

- Öppet API
- Skalbart
- Uppdateringar under körning
- Redo för molnet

Copyright © 2016, SAS Institute Inc. All rights reserved.









SAS Viya™

Vad händer nu?

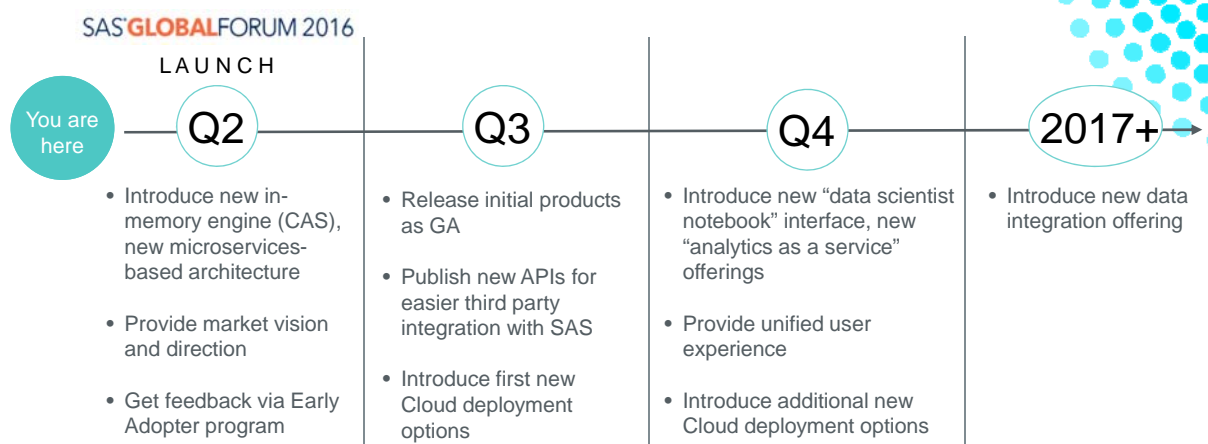
Copyright © 2016, SAS Institute Inc. All rights reserved.

SAS Viya

 <p>Data Scientist</p>	 <p>Business Analyst</p>	 <p>Domain Expert</p>	 <p>Application Developer</p>	 <p>IT Management</p>	 <p>Executive</p>
<p>Expand analytic toolkit. Code in the language of your choice. Scale methods without redefining code.</p>	<p>Easily wrangle data. Interactively interrogate. Discover insights through visual interface.</p>	<p>Guided workflows. Visual interface accelerate investigations. Analytic intelligence built-in.</p>	<p>Include SAS analytics in applications. Documented REST APIs.</p>	<p>Centralized management of analytic assets. One governed environment. Multi-cloud for flexibility. Failover protection.</p>	<p>Consistent answers. Use current hardware. Extend analytics use with existing skills.</p>

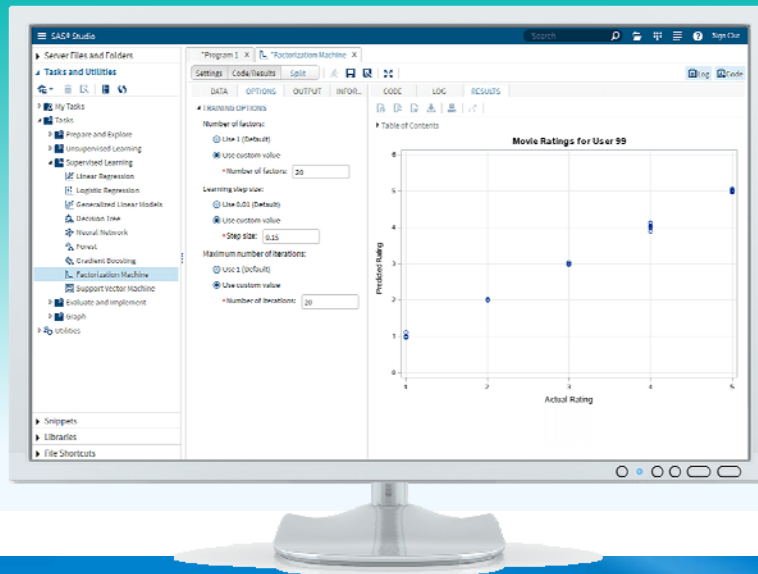
Copyright © 2016, SAS Institute Inc. All rights reserved.

SAS® Viya™ ROADMAP STRATEGY



Copyright © 2016, SAS Institute Inc. All rights reserved.

SAS® Viya™ SAS® VISUAL DATA MINING AND MACHINE LEARNING



SAS® Viya™ ROADMAP STRATEGY

SAS GLOBALFORUM 2016

LAUNCH

You are here

Q2

Q3

Q4

2017+

- Introduce new in-memory engine (CAS), new microservices-based architecture
- Provide market vision and direction
- Get feedback via Early Adopter program

- Release initial products as GA
- Publish new APIs for easier third party integration with SAS
- Introduce first new Cloud deployment options

- Introduce new "data scientist notebook" interface, new "analytics as a service" offerings
- Provide unified user experience
- Introduce additional new Cloud deployment options

- Introduce new data integration offering

SAS® Viya™ SAS ENVIRONMENT MANAGER

The screenshot displays the SAS Environment Manager dashboard. Key components include:

- System Status:** Overview of system health with metrics for A-Metric (26,075) and B-Metric (11,573).
- System CPU Health:** Line chart showing usage over time (11:00 AM to 1:00 PM).
- System Memory Health:** Bar chart showing memory usage.
- Mobile Devices:** Donut chart showing 16 devices, split between Whitelist and Blacklist.
- Authorization Window:** A modal window titled 'Authorization' showing CAS Authorization settings. It includes a legend for 'Show individual permissions' (Not authorized, Authorized, Row-level, Unknown) and a table of permissions for identities like 'Admins', 'VAdmins', 'Anonymous', and 'Viewers'.

Copyright © 2016, SAS Institute Inc. All rights reserved.

SAS® Viya™ ROADMAP STRATEGY

SAS GLOBALFORUM 2016

LAUNCH

You are here

Q2

Q3

Q4

2017+

- Introduce new in-memory engine (CAS), new microservices-based architecture
- Provide market vision and direction
- Get feedback via Early Adopter program

- Release initial products as GA
- Publish new APIs for easier third party integration with SAS
- Introduce first new Cloud deployment options

- Introduce new "data scientist notebook" interface, new "analytics as a service" offerings
- Provide unified user experience
- Introduce additional new Cloud deployment options

- Introduce new data integration offering

