



SAS® FORUM
RUSSIA 2016

Welcome



SAS Technology Directions

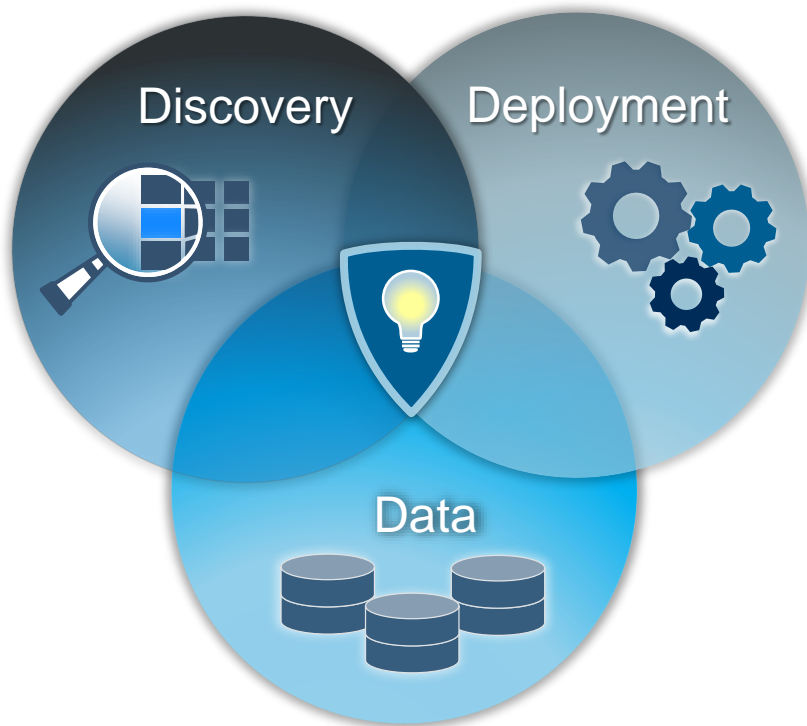
Anand Chitale

Senior Manager, SAS Global Technology Practice

PURPOSE & LEGAL DISCLAIMER

- Subject to the disclaimers below, the goal of this document is to share SAS product direction to support your business and technology planning.
- Legal Disclaimers:
 - Please note that roadmap information aims to outline general product direction and should not be relied on in purchase decisions.
 - The delivery and timing of any future functionality described for our products is subject to change without prior notification.
 - Information regarding potential future products is not a commitment or obligation to deliver any code or functionality, and in no way represents contractual obligation by SAS.

SAS ANALYTICS IN ACTION



TECHNOLOGY DIRECTIONS



Data
Management



Business
Intelligence



Analytics



Hadoop

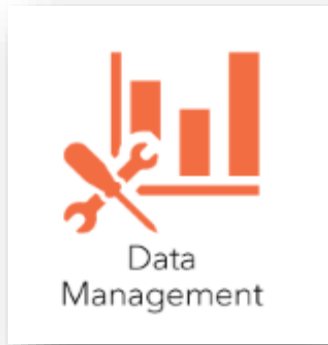
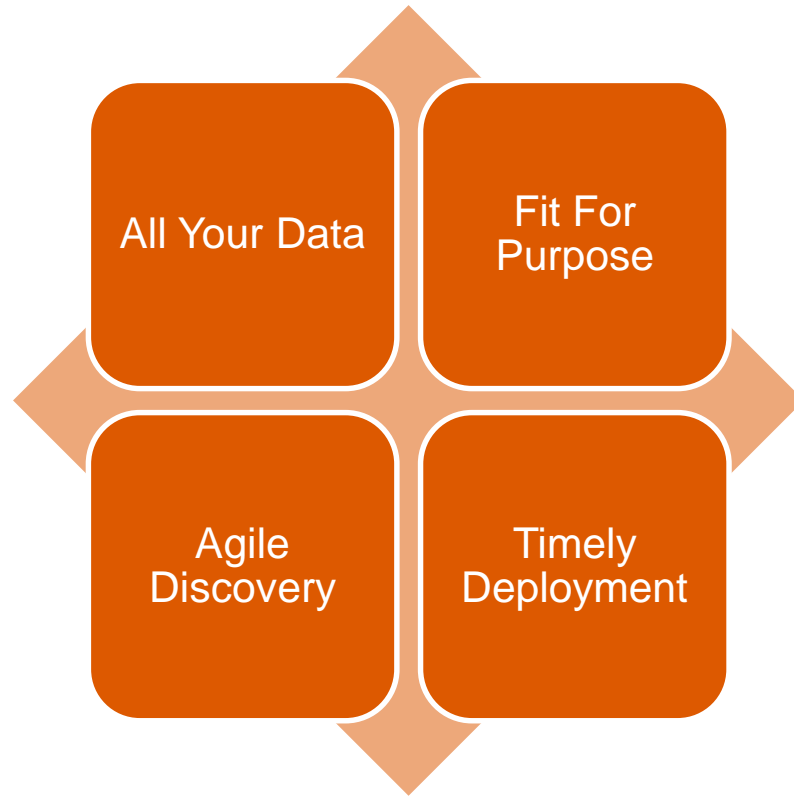


In-Memory



Cloud

TECHNOLOGY DIRECTIONS



DATA MANAGEMENT RECENT RELEASES

DEC

SAS ESP 3.2

- In-stream DQ, machine learning
- Support Dynamic ESP model changes
- Apache Camel Adapter
- YARN on Hadoop integration

JAN

**SAS DATA LOADER
FOR HADOOP 2.4**

- Spark DQ Functions
- Expanded Hadoop distributions (PivotalHD, IBM BigInsight)
- Big Data Match
- Impala queries
- Chain Directives
- REST API

FEB

**SAS FEDERATION
SERVER 4.2**

- Randomization
- On-Demand DQ within FedSQL / DS2
- Native Hadoop/ Impala Drivers
- Shared Metadata (User Auth)
- SAS DS2 support and database pushdown

APRIL

SAS DM CATEGORY

- Improved accuracy and security
- Improved productivity and performance
- Streamlined Integration
- SAS/Access updates Hive, HAWQ, Impala, PI and others

DATA MANAGEMENT ROADMAP

Q4 2016

SAS 9

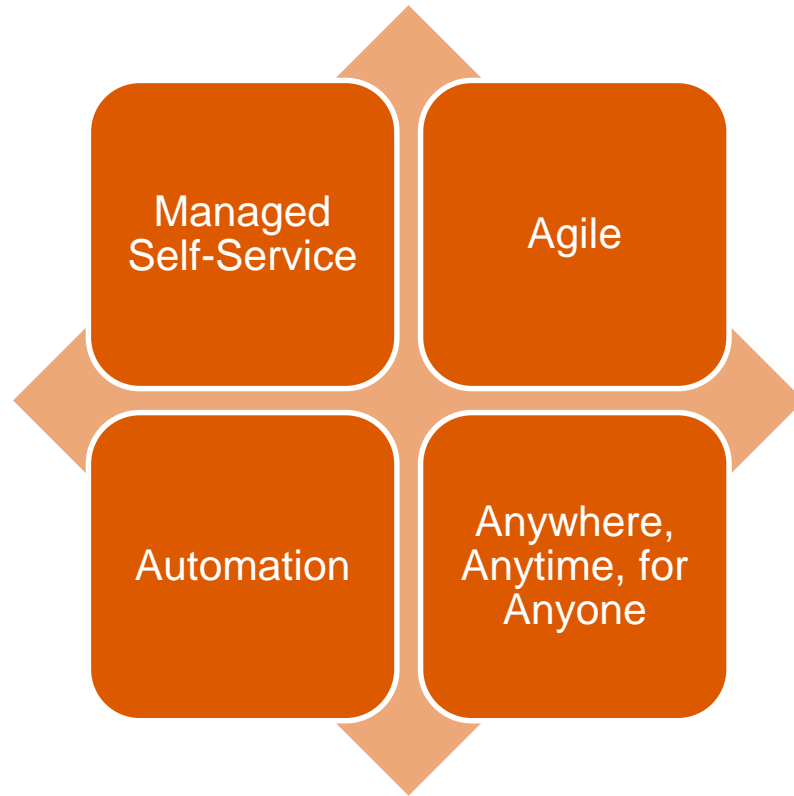
- SAS/ACCESS 9.4M4
- SAS Data Quality Accelerators 2.8,
- SAS Code and Scoring Accelerators 9.4M4,
- SAS Data Quality Server 9.4M4,
- SAS Data Integration Studio 4.9.x,
- Data Management Platform 2.8,
- SAS MDM 4.3
- SAS ESP 4.1

2017 & beyond

SAS Data Management on SAS[®] Viya[™]

- SAS/Access Products (Data Connectors)
- SAS In Database Technology offerings
- Single Web Front for Data Management
- Data Quality (Profiling, Enrichments, QKBs)
- Data Stewardship (Workflow, Remediation & more)
- Data Integration (process flow design, transforms, more)
- Enterprise Data Management (MDM)

TECHNOLOGY DIRECTIONS



Business
Intelligence

BROADER SET OF CAPABILITIES IN FUTURE

CAPABILITY RICH

SELF-SERVICE

IT FRIENDLY



Business
Intelligence

Analytics

Text Analytics

Location
Analytics

Automated
Modelling

Clustering /
Segmentation

Visualization

Enhanced
Visualizations /
Interactivity

Edit / Explore for
Web Consumers

Data Wrangling

Real-Time /
Operational
Reports

Mobility

Enhanced
Visualizations /
Interactivity

Edit / Explore for
Mobile
Consumers

Mashups

Windows
Support

Enterprise

Enhanced
Administration

Webification
(HTML5)

Gamification

Enhanced Cloud
Support

DATA MANAGEMENT RECENT RELEASES

Q4 2016

SAS 9.4 M4

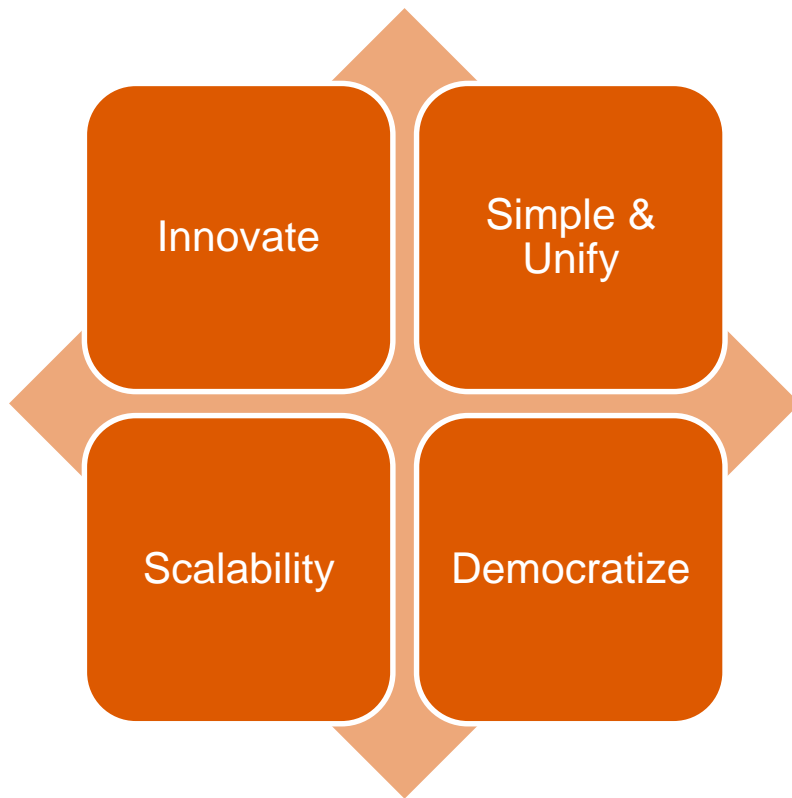
- SAS Visual Analytics 7.4
- SAS Visual Statistics 7.4
- SAS Mobile BI update
- SAS Office Analytics update

2017 & beyond

SAS Visual Analytics on SAS[®] Viya[™]

- SAS Visual Analytics 8.1
- SAS Visual Statistics 8.1
- SAS Office Analytics Update
- SAS Visual Analytics 8.2
- SAS Visual Statistics 8.2
- SAS Office Analytics Update
- SAS Mobile BI update

TECHNOLOGY DIRECTIONS



ANALYTICS ROADMAP

Subject
To
Change

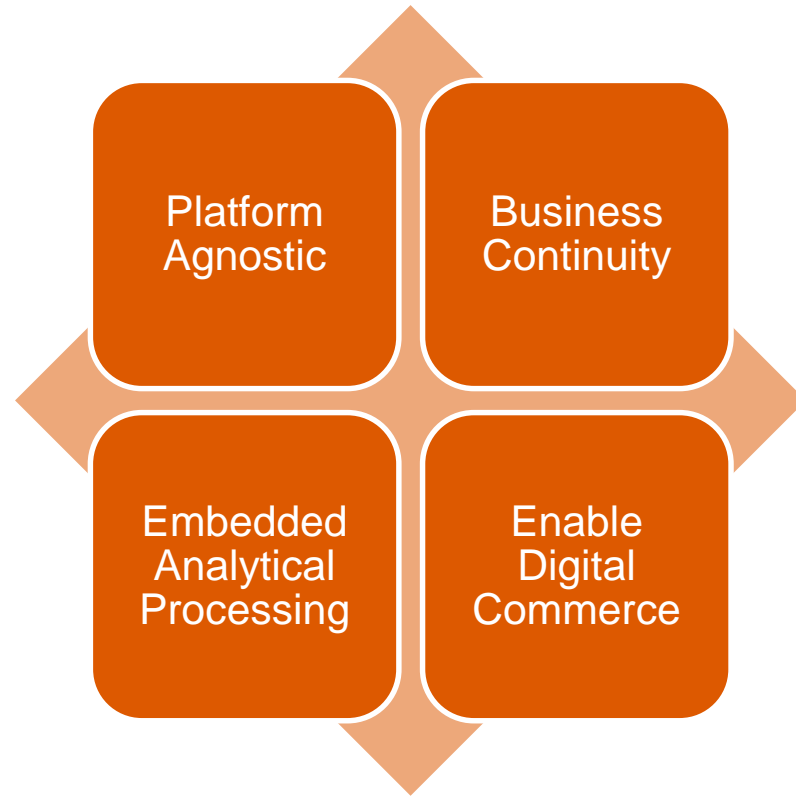
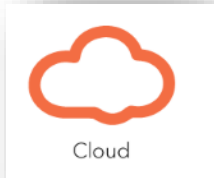
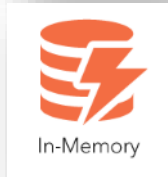
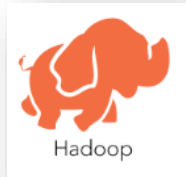
Q3/Q4
2016

2017 & beyond

SAS Analytics on SAS® Viya™

- SAS Visual Data Mining and Machine Learning
- SAS Visual Statistics
- Open Source Integration
 - Python, Lua, Java
 - Jupyter Notebook & SAS
- Bringing existing SAS Analytics procedures to Viya
- New analytical offerings
 - Factorization Models
 - Gradient boosting
 - Assess Supervised Models
 - Variable Cardinality Analysis.. And more
- SAS Analytics as a Server (Cloud)

TECHNOLOGY DIRECTIONS



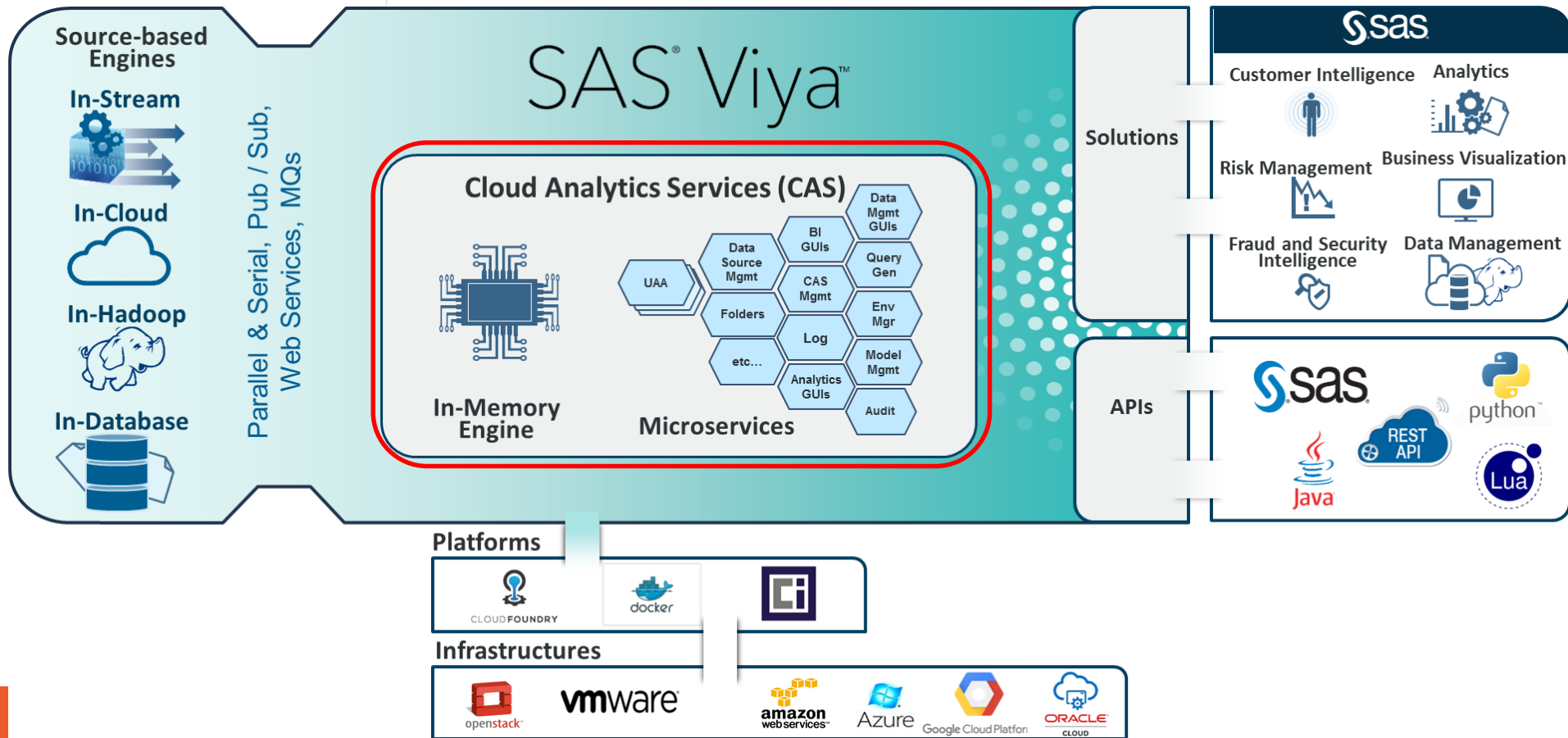
TECHNOLOGY DIRECTIONS





SAS[®] FORUM
RUSSIA 2016

MICRO-SERVICE BASED ARCHITECTURE



Thank You

Let's Connect:
[@avchitale](#)

