



Tips & tricks i SAS Visual Analytics

Niklas Schulman – SAS Institute Sverige

Beräkna din genomsnittliga hastighet (km/h)

Spenderad Tid:

Antal Timmar:

Antal Minuter:

Antal Sekunder:

Total Distans (km):

Antal Kilometer

Din genomsnittliga hastighet var (km/h):

28.01

$$\left(\left(\text{Distans} * 1000 \right) / \left(\left(\text{Timmar} * 3600 \right) + \left(\text{Minuter} * 60 \right) + \text{Sekunder} \right) \right) * 3.6$$

Beräkna din genomsnittliga hastighet (km/h)

Spenderad Tid:

Antal Timmar:

Antal Minuter:

Antal Sekunder:

Total Distans (km):

Antal Kilometer

Din genomsnittliga hastighet var (km/h):

12.74

$$\left(\left(\text{Distans} * 1000 \right) / \left(\left(\text{Timmar} * 3600 \right) + \left(\text{Minuter} * 60 \right) + \text{Sekunder} \right) \right) * 3.6$$



Sökningsmetoder med Parametrar

 Sök efter bilar...

 Vad vill du hitta...

- 325Ci 2dr
- 325Ci convertible 2dr
- 325xi Sport
- 330Ci 2dr
- 330Ci convertible 2dr
- 350Z coupe 2dr
- 350Z Enthusiast convertible 2dr
- 9-3 Aero convertible 2dr
- 9-3 Arc convertible 2dr
- 9-3 Arc Sport 4dr
- 911 Carrera 4S coupe 2dr (convert)
- 911 Carrera convertible 2dr (coupe)
- 911 GT2 2dr
- 911 Targa coupe 2dr
- A4 3.0 convertible 2dr
- A4 3.0 Quattro convertible 2dr
- A41.8T convertible 2dr
- Accent 2dr hatch
- Accent GT 2dr hatch
- Accord EX 2dr
- Accord EX V6 2dr
- Accord LX 2dr
- Alero GLS 2dr
- Alero GX 2dr
- Boxster convertible 2dr
- Boxster S convertible 2dr
- C230 Sport 2dr
- C320 Sport 2dr

Ursprung	Tillverkare	Bilmodell	Hästkrfter	MPG (Stad)	Listpris (\$)
	Acura	3.5 RL 4dr	225	18	39014
		3.5 RL w/Navigation 4dr	225	18	41100
		MDX	265	17	33337
		NSX coupe 2dr manual S	290	17	79978
		RLX coupe 2dr	200	24	21761
	Asia				
	Honda				
	Hyundai				

IF GetWord [ListTabSok] NoMissing

[1]

RETURN OR

UpCase (RemoveBlanks [Bilmodell]) Contains GetWord [UpCase (ListTabSok)]

[_All_] [1]

UpCase (RemoveBlanks [Bilmodell]) Contains GetWord [UpCase (ListTabSok)]

[_All_] [2]

UpCase (RemoveBlanks [Bilmodell]) Contains GetWord [UpCase (ListTabSok)]

[_All_] [3]

ELSE Bilmodell NoMissing



Sökningsmetoder med Parametrar

Sök efter bilar...

Sport 2dr

Vad vill du hitta...

Audi

- 325Ci 2dr
- 325Ci convertible 2dr
- 325xi Sport
- 330Ci 2dr
- 330Ci convertible 2dr
- 350Z coupe 2dr
- 350Z Enthusiast convertible 2dr
- 9-3 Aero convertible 2dr
- 9-3 Arc convertible 2dr
- 9-3 Arc Sport 4dr
- 911 Carrera 4S coupe 2dr (convert)
- 911 Carrera convertible 2dr (coupe)
- 911 GT2 2dr
- 911 Targa coupe 2dr
- A4 3.0 convertible 2dr
- A4 3.0 Quattro convertible 2dr
- A41.8T convertible 2dr
- Accent 2dr hatch
- Accent GT 2dr hatch
- Accord EX 2dr
- Accord EX V6 2dr
- Accord LX 2dr
- Alero GLS 2dr
- Alero GX 2dr
- Boxster convertible 2dr
- Boxster S convertible 2dr
- C230 Sport 2dr
- C320 Sport 2dr

Ursprung	Tillverkare	Bilmmodell	Hästkrfter	MPG(Stad)	Listpris (\$)
Europe	Audi	A4 1.8T 4dr	170	22	23508
		A4 3.0 4dr	220	20	28846
		A4 3.0 convertible 2dr	220	20	38325
		A4 3.0 Quattro 4dr auto	220	18	31388
		A4 3.0 Quattro 4dr manual	220	17	30366
		A4 3.0 Quattro convertible 2dr	220	18	40075
		A41.8T convertible 2dr	170	23	32506
		A6 2.7 Turbo Quattro 4dr	250	18	38840
		A6 3.0 4dr	220	20	33129
		A6 3.0 Avant	220	18	37060
		A6 3.0 Quattro	220	18	37060
		A6 4.2 Quattro	250	18	37060
		A8 L Quattro	250	18	37060
		RS 6 4dr	250	18	37060
S4 Avant Quattro	250	18	37060		
S4 Quattro	250	18	37060		
TT 1.8 convertible	250	18	37060		
TT 1.8 Quattro 2dr (convertible)	250	18	37060		
TT 3.2 coupe 2dr (convertible)	250	21	36739		

OR

UpCase (Ursprung) Contains UpCase (MultiKolSok)

UpCase (Tillverkare) Contains UpCase (MultiKolSok)

UpCase (Bilmmodell) Contains UpCase (MultiKolSok)



Sökningsmetoder med Parametrar

Sök efter bilar...

Sport 2dr

Vad vill du hitta...

S80

- 325Ci 2dr
- 325Ci convertible 2dr
- 325xi Sport
- 330Ci 2dr
- 330Ci convertible 2dr
- 350Z coupe 2dr
- 350Z Enthusiast convertible 2dr
- 9-3 Aero convertible 2dr
- 9-3 Arc convertible 2dr
- 9-3 Arc Sport 4dr
- 911 Carrera 4S coupe 2dr (convert)
- 911 Carrera convertible 2dr (coupe)
- 911 GT2 2dr
- 911 Targa coupe 2dr
- A4 3.0 convertible 2dr
- A4 3.0 Quattro convertible 2dr
- A41.8T convertible 2dr
- Accent 2dr hatch
- Accent GT 2dr hatch
- Accord EX 2dr
- Accord EX V6 2dr
- Accord LX 2dr
- Alero GLS 2dr
- Alero GX 2dr
- Boxster convertible 2dr
- Boxster S convertible 2dr
- C230 Sport 2dr
- C320 Sport 2dr

Ursprung	Tillverkare	Bilmodell	Hästkrfter	MPG (Stad)	Listpris (\$)
Europe	Volvo	S80 2.5T 4dr	194	20	35688
		S80 2.9 4dr	208	20	35542
		S80 T6 4dr	268	19	42573

OR

UpCase (*Ursprung*) Contains UpCase (MultiKolSok)

UpCase (*Tillverkare*) Contains UpCase (MultiKolSok)

UpCase (*Bilmodell*) Contains UpCase (MultiKolSok)



Sökningsmetoder med Parametrar

Sök efter bilar...

Sport 2dr

Vad vill du hitta...

S80

- 325Ci 2dr
- 325Ci convertible 2dr
- 325xi Sport
- 330Ci 2dr
- 330Ci convertible 2dr
- 350Z coupe 2dr
- 350Z Enthusiast convertible 2dr
- 9-3 Aero convertible 2dr
- 9-3 Arc convertible 2dr
- 9-3 Arc Sport 4dr
- 911 Carrera 4S coupe 2dr (convert)
- 911 Carrera convertible 2dr (coupe)
- 911 GT2 2dr
- 911 Targa coupe 2dr
- A4 3.0 convertible 2dr
- A4 3.0 Quattro convertible 2dr
- A41.8T convertible 2dr
- Accent 2dr hatch
- Accent GT 2dr hatch
- Accord EX 2dr
- Accord EX V6 2dr
- Accord LX 2dr
- Alero GLS 2dr
- Alero GX 2dr
- Boxster convertible 2dr
- Boxster S convertible 2dr
- C230 Sport 2dr
- C320 Sport 2dr

Ursprung	Tillverkare	Bilmodell	Hästkrafter	MPG (Stad)	Listpris (\$)
		S80 2.5T 4dr	194	20	35688
Europe	Volvo	S80 2.9 4dr	208	20	35542
		S80 16 4dr	268	19	42573

Google images, Wikipedia etc

Edit External Link

Enter a URL and label. Or click the button to link to a stored process.

Label: URL: *

Link to Stored Process

Parameters

 Format value Source: * Target:

+ Add a new parameter

OK

Cancel



800 x 529 - brandmotors.net



Asia (158)

Tillverkare

Biltyp

Clear Filter

Acura 7

Honda 17

Hyundai 12

Infiniti 8

Isuzu 2

Kia 11

Lexus 11

Mazda 11

Mitsubishi 13

Listpris (\$)

\$100,000

Använda parametrar för att skapa filterberoenden och visningsregler

Tillverkare	Bilmodell	Antal	Drivsystem	Listpris (\$)	Axelavstä...	Bil längd	Hästkrafter	l mil (blandad)	l mil (stad)	Motorstorlek	
Acura	3.5 RL 4dr	6	Front	39014	115	197	225	0.98	1.31	3.5	3047
Acura	3.5 RL w/Navigation 4dr	6	Front	41100	115	197	225	0.98	1.31	3.5	3294
Acura	MDX	6	All	33337	106	189	265	1.02	1.38	3.5	2994
Acura	NSX coupe 2dr manual S	6	Rear	79978	100	174	290	0.98	1.38	3.2	3349
Acura	RSX Type S 2dr	4	Front	21761	101	172	200	0.76	0.98	2	2432
Acura	TL 4dr	6	Front	30299	108	186	270	0.84	1.18	3.2	2601
Acura	TSX 4dr	4	Front	24647	105	183	200	0.81	1.07	2.4	2500
Honda	Accord EX 2dr	4	Front								2732
Honda	Accord EX V6 2dr	6	Front								2513
Honda	Accord LX 2dr	4	Front								2782
Honda	Accord LX V6 4dr	6	Front								3258
Honda	Civic DX 2dr	4	Front								3468
Honda	Civic EX 4dr	4	Front								1850
Honda	Civic HX 2dr	4	Front								4365
Honda	Civic Hybrid 4dr manual (gas/el...	4	Front								4310
Honda	Civic LX 4dr	4	Front								4387
Honda	Civic Si 2dr hatch	4	Front								2835
Honda	CR-V LX	4	Front								2255
Honda	Element LX	4	All								2290
Honda	Insight 2dr (gas/electric)	3	Front								2339
Honda	Odyssey EX	6	Front								2635
Honda	Odyssey LX	6	Front								
Honda	Pilot LX	6	All								
Honda	S2000 convertible 2dr	4	Rear								
Hyundai	Accent 2dr hatch	4	Front								
Hyundai	Accent GL 4dr	4	Front	11116	96	167	103	0.71	0.81	1.6	2290
Hyundai	Accent GT 2dr hatch	4	Front	11209	96	167	103	0.71	0.81	1.6	2339
Hyundai	Elantra GLS 4dr	4	Front	12781	103	178	138	0.69	0.90	2	2635

\$28,925

\$9,000

Advanced Filter

Filter name: * Advanced Filter 1

Result type: Boolean

Data Items

- Search text
- Character
- Numeric

Column Templates

Operators

- Search text
- Numeric (simple)
- Comparison

Visual Text

(Ursprung = Ursprung Parameter)

Messages Scratch

OK Cancel

Ursprung

Tillverkare

Biltyp

Listpris (\$)

\$100,000

Använda parametrar för att skapa filterberoenden och visningsregler

Tillverkare	Bilmmodell	Antal..	Drivsystem	Listpris (\$)	Axelavstä...	Biljängd	Hästkrafter	l/mil (blandad)	l/mil (stad)	Motorstorlek	Vikt
Acura	3.5 RL 4dr	6	Front	39014	115	197	225	0.98	1.31	3.5	3880
Acura	3.5 RL w/Navigation 4dr	6	Front	41100	115	197	225	0.98	1.31	3.5	3893
Acura	MDX	6	All	33337	106	189	265	1.02	1.38	3.5	4451
Acura	NSX coupe 2dr manual S	6	Rear	79978	100	174	290	0.98	1.38	3.2	3153
Acura	RSX Type S 2dr	4	Front	21761	101	172	200	0.76	0.98	2	2778
Acura	TL 4dr	6	Front	30299	108	186	270	0.84	1.18	3.2	3575
Acura	TSX 4dr	4	Front	24647	10						230
Audi	A4 1 8T 4dr	4	Front	23508	10						252
Audi	A4 3.0 4dr	6	Front	28846	10						462
Audi	A4 3.0 convertible 2dr	6	Front	38325	10						814
Audi	A4 3.0 Quattro 4dr auto	6	All	31388	10						627
Audi	A4 3.0 Quattro 4dr manual	6	All	30366	10						583
Audi	A4 3.0 Quattro convertible 2dr	6	All	40075	10						013
Audi	A41 8T convertible 2dr	4	Front	32506	10						638
Audi	A6 2.7 Turbo Quattro 4dr	6	All	38840	10						836
Audi	A6 3.0 4dr	6	Front	33129	10						561
Audi	A6 3.0 Avant Quattro	6	All	37060	10						035
Audi	A6 3.0 Quattro 4dr	6	All	35992	10						880
Audi	A6 4.2 Quattro 4dr	8	All	44936	10						024
Audi	A8 L Quattro 4dr	8	All	64740	12						399
Audi	RS 6 4dr	8	Front	76417	10						024
Audi	S4 Avant Quattro	8	All	44446	10						936
Audi	S4 Quattro 4dr	8	All	43556	104	179	340	1.18	1.68	4.2	3825
Audi	TT 1.8 convertible 2dr (coupe)	4	Front	32512	95	159	180	0.84	1.18	1.8	3131
Audi	TT 1.8 Quattro 2dr (convertible)	4	All	33891	96	159	225	0.84	1.18	1.8	2921
Audi	TT 3.2 coupe 2dr (convertible)	6	All	36739	96	159	250	0.81	1.12	3.2	3351
BMW	325Ci 2dr	6	Rear	28245	107	177	184	0.81	1.18	2.5	3197
BMW	325Ci convertible 2dr	6	Rear	34800	107	177	184	0.87	1.24	2.5	3560

Edit Display Rule

Expression Details

Alert Options

Specify the details for your expression

Column: Listpris (\$)

Operator: >

Value: ListprisParameter

Specify styles and where they apply

Style: Arial 12 B I U

Applies to: Row

OK

Cancel

\$28,925

\$9,000

Ursprung

Tillverkare

Biltyp

Listpris (\$)

\$100,000

Använda parametrar för att skapa filterberoenden och visningsregler

Tillverkare	Bilmodell	Antal..	Drivsystem	Listpris (\$)	Axelavstå...	Biljängd	Hästkrafter	l/mil (blandad)	l/mil (stad)	Motorstorlek	Vikt
Acura	3.5 RL 4dr	6	Front	39014	115	197	225	0.98	1.31	3.5	3880
Acura	3.5 RL w/Navigation 4dr	6	Front	41100	115	197	225	0.98	1.31	3.5	3893
Acura	MDX	6	All	33337	106	189	265	1.02	1.38	3.5	4451
Acura	NSX coupe 2dr manual S	6	Rear	79978	100	174	290	0.98	1.38	3.2	3153
Acura	RSX Type S 2dr	4	Front	21761	101	172	200	0.76	0.98	2	2778
Acura	TL 4dr	6	Front	30299	108	186	270	0.84	1.18	3.2	3575
Acura	TSX 4dr	4	Front	24647	10						230
Audi	A4 1 8T 4dr	4	Front	23508	10						252
Audi	A4 3.0 4dr	6	Front	28846	10						462
Audi	A4 3.0 convertible 2dr	6	Front	38325	10						814
Audi	A4 3.0 Quattro 4dr auto	6	All	31388	10						627
Audi	A4 3.0 Quattro 4dr manual	6	All	30366	10						583
Audi	A4 3.0 Quattro convertible 2dr	6	All	40075	10						013
Audi	A41 8T convertible 2dr	4	Front	32506	10						638
Audi	A6 2.7 Turbo Quattro 4dr	6	All	38840	10						836
Audi	A6 3.0 4dr	6	Front	33129	10						561
Audi	A6 3.0 Avant Quattro	6	All	37060	10						035
Audi	A6 3.0 Quattro 4dr	6	All	35992	10						880
Audi	A6 4.2 Quattro 4dr	8	All	44936	10						024
Audi	A8 L Quattro 4dr	8	All	64740	12						399
Audi	RS 6 4dr	8	Front	76417	10						024
Audi	S4 Avant Quattro	8	All	44446	10						936
Audi	S4 Quattro 4dr	8	All	43556	104	179	340	1.18	1.68	4.2	3825
Audi	TT 1.8 convertible 2dr (coupe)	4	Front	32512	95	159	180	0.84	1.18	1.8	3131
Audi	TT 1.8 Quattro 2dr (convertible)	4	All	33891	96	159	225	0.84	1.18	1.8	2921
Audi	TT 3.2 coupe 2dr (convertible)	6	All	36739	96	159	250	0.81	1.12	3.2	3351
BMW	325Ci 2dr	6	Rear	28245	107	177	184	0.81	1.18	2.5	3197
BMW	325Ci convertible 2dr	6	Rear	34800	107	177	184	0.87	1.24	2.5	3560

Edit Display Rule

Expression Details

Alert Options

Specify the details for your expression

Column: Listpris (\$)

Operator: >

Value: ListprisParameter

Specify styles and where they apply

Style: Arial 12 B I U

Applies to: Row

OK

Cancel

\$42,462

\$9,000

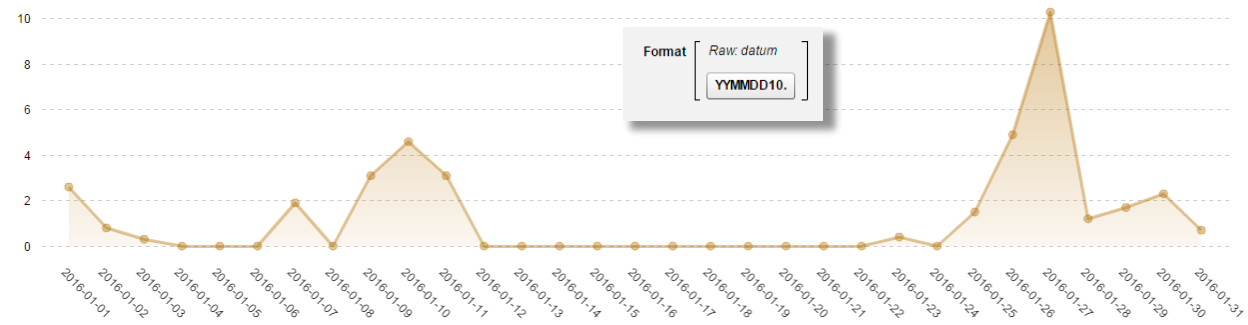
- G_VADER
- Category
 - År och vecka 23
 - datum 152
 - Datum YYYY-MM-DD 152
 - Measure
 - Antal dagar sedan
 - avg_lufttryck
 - Frequency
 - max_lufttryck
 - max_temp
 - Medelnederbörd
 - min_lufttryck
 - min_temp
 - nederbörd
 - sofflackar
 - Parameter
 - Distans
 - Kategori
 - Kategorier
 - ListprisParameter
 - ListTabSok
 - Minuter
 - MultikolSok
 - Sekunder
 - Tillverkare Parameter
 - Timmar
 - Ursprung Parameter
 - Valuta
 - Variabel
 - Aggregated Measure
 - Frequency Percent

Property	Value
Name	
Classification	
Format	
Aggregation	
Sort Options	

Drop controls here to create a section prompt

Använda funktioner för att transformera data

Formatera om data, tex. datum till YYYY-MM-DD



Skapa format som inte finns...

År och vecka	Medelnederbörd	
2016 vecka 01	0.76	
2016 vecka 02	1.10	
2016 vecka 03		Concatenate
2016 vecka 04		Concatenate
2016 vecka 05		Format
2016 vecka 06		Year (datum)
2016 vecka 07		BEST12.
2016 vecka 08		vecka
2016 vecka 09		Format
2016 vecka 10		WeekNumber (datum)
2016 vecka 11		ZZ.0
2016 vecka 12		
2016 vecka 13		

TreatAs() funktionen - en användbar liten funktion...

Datum YYYY-MM-DD	Antal dagar sedan
2016-01-01	436
2016-01-02	435
2016-01-03	434
2016-01-04	433
2016-01-05	432
2016-01-06	431
2016-01-07	430
2016-01-08	429
2016-01-09	428
2016-01-10	427
2016-01-11	426
2016-01-12	425
2016-01-13	424

Styles Customize Theme

Theme

Select theme: SAS Snow Reset Theme

Override Theme

Report background:

Report prompt background:

Font: Arial [Font Icon]

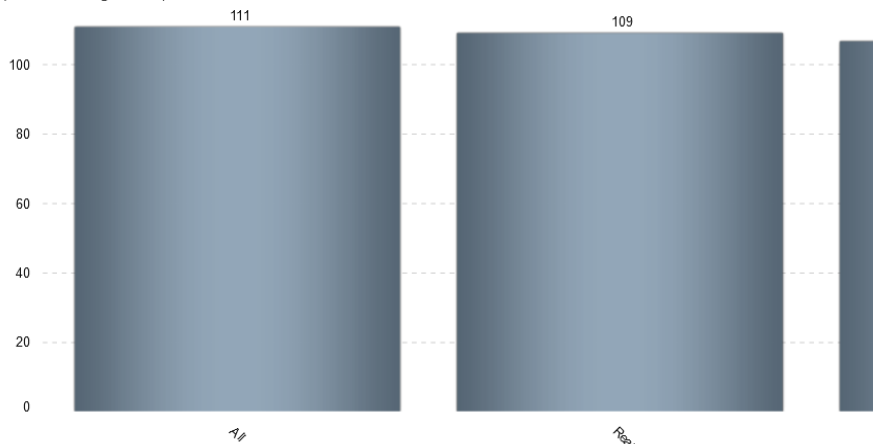


Skapa flexibilitet med Parametrar och Funktioner (och olika datakällor)

Axelavstånd

(Genomsnittligt värde)

Axelavstånd
Billängd
Bränsleförbrukning (Blandad)
Bränsleförbrukning (Stad)
Hästkrafter
Listpris
Motorstorlek
Vikt



Ursprung	Tillverkare	Drivsystem	Biltyp	Antal Cylindrar
----------	-------------	------------	--------	-----------------

Drivsystem

```

IF ( Kategori = " Antal Cylindrar " )
RETURN Antal Cylindrar
ELSE IF ( Kategori = " Bilmodell " )
RETURN Bilmodell
ELSE IF ( Kategori = " Biltyp " )
RETURN Biltyp
ELSE IF ( Kategori = " Drivsystem " )
RETURN Drivsystem
ELSE IF ( Kategori = " Tillverkare " )
RETURN Tillverkare
ELSE IF ( Kategori = " Ursprung " )
RETURN Ursprung
ELSE " Other "

```

Visa Exceldata...

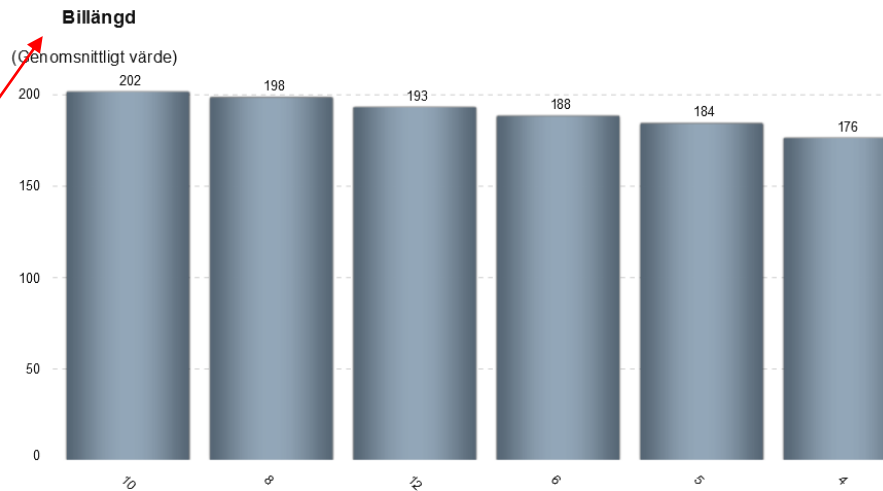


Skapa flexibilitet med Parametrar och Funktioner (och olika datakällor)

Axelavstånd
Billängd
Bränsleförbrukning (Blandad)
Bränsleförbrukning (Stad)
Hästkrafter
Listpris
Motorstorlek
Vikt

Välj Valuta för Listpris

USD (1.00)
NOK (8.47)
EUR (0.94)



Ursprung	Tillverkare	Drivsystem	Biltyp	Antal Cylindrar
----------	-------------	------------	--------	------------------------

Antal Cylindrar

Visa Exceldata...

```

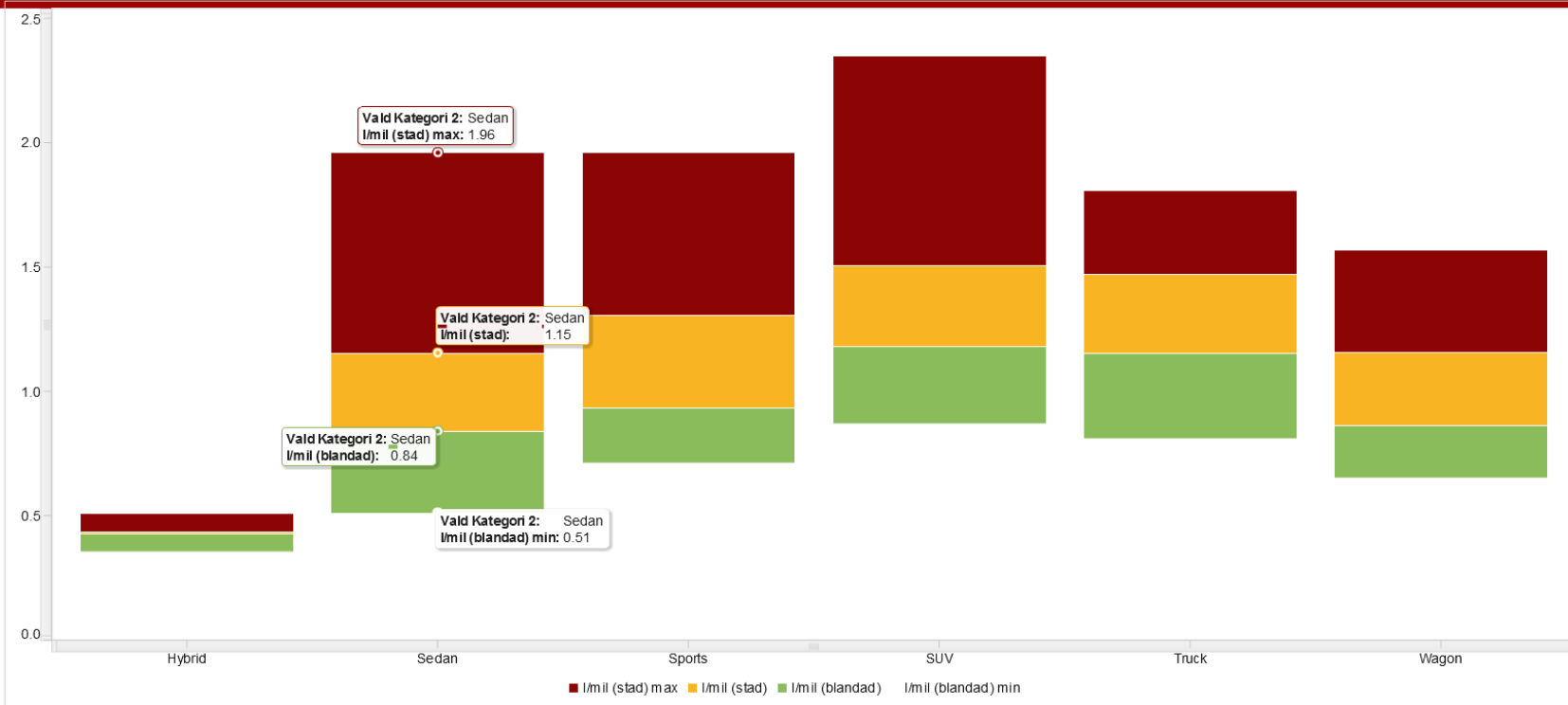
IF ( Kategori = " Antal Cylindrar " )
RETURN Antal Cylindrar
ELSE IF ( Kategori = " Bilmodell " )
RETURN Bilmodell
ELSE IF ( Kategori = " Biltyp " )
RETURN Biltyp
ELSE IF ( Kategori = " Drivsystem " )
RETURN Drivsystem
ELSE IF ( Kategori = " Tillverkare " )
RETURN Tillverkare
ELSE IF ( Kategori = " Ursprung " )
RETURN Ursprung
ELSE " Other "

```


Skapa flexibilitet med Parametrar och Funktioner (och olika datakällor)



Hur mycket bränsle drar min bil (blandad - stad)?



Ursprung

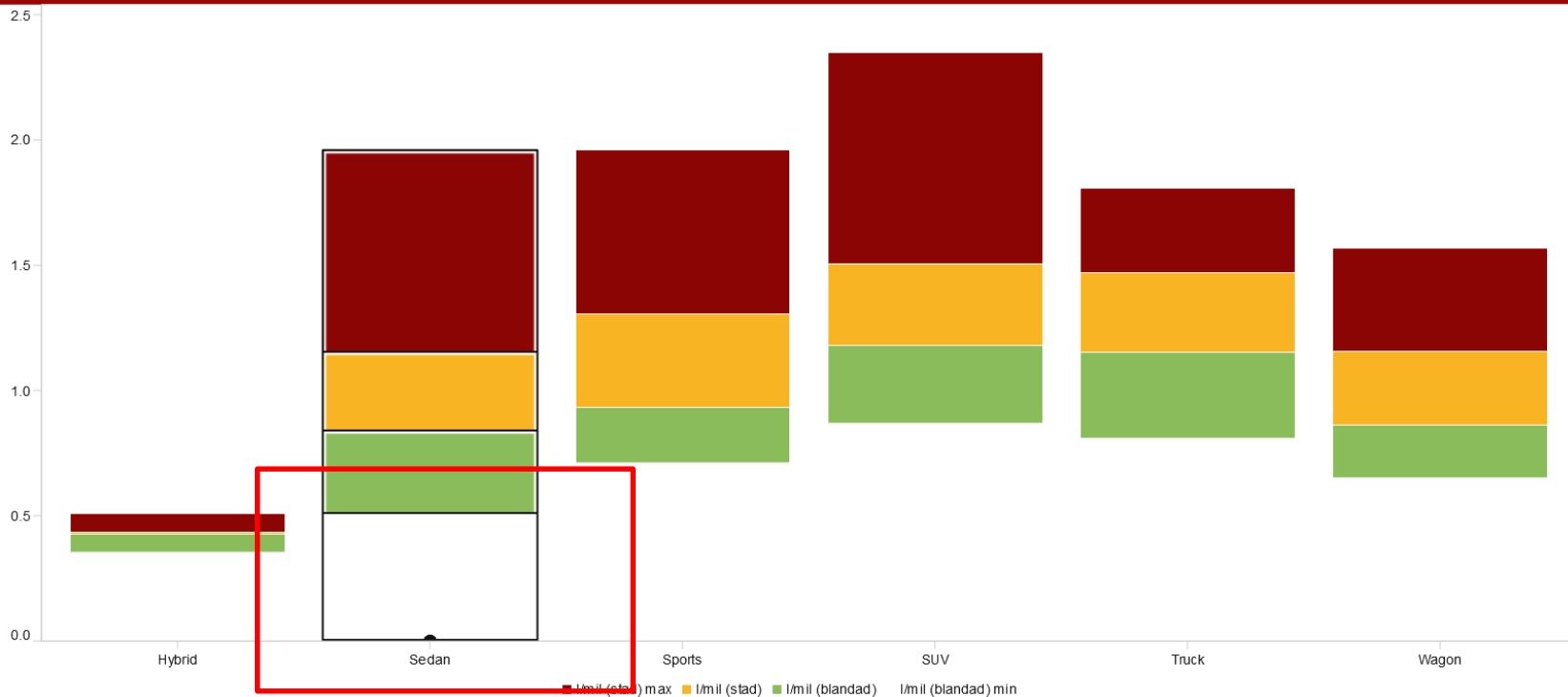
Tillverkare

Drivsystem

Biltyp

Antal Cylindrar

Hur mycket bränsle drar min bil (blandad - stad)?



Ursprung

Tillverkare

Drivsystem

Biltyp

Antal Cylindrar

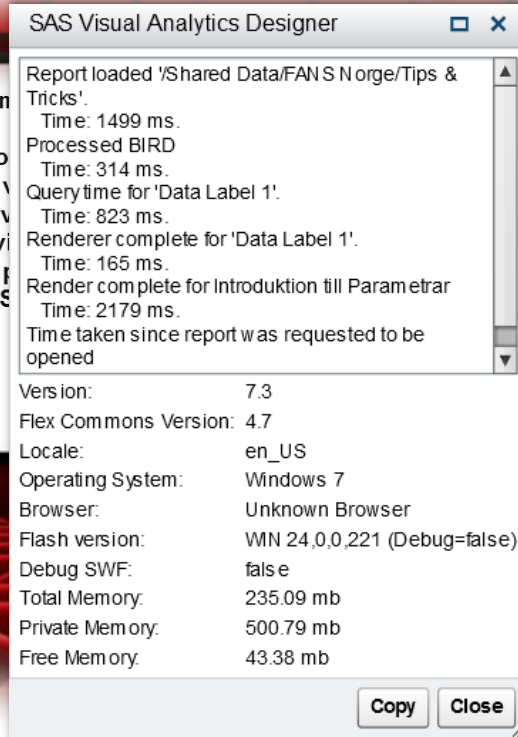
Lite blandat

Ctrl+Alt+B: Bird XML (report source code)

```
SAS Visual Analytics Designer
<?xml version="1.0" encoding="UTF-8"?>
<SASReport xmlns="http://www.sas.com/sasreportmodel/bird-3.2.6" label="Tips & Tricks" createdVersion="3.2.4" dateCreated="2015-09-21T12:07:17Z" dateModified="2017-03-07T14:17:48Z"
  <DataDefinitions>
    <DataDefinition dataSource="ds744" type="multidimensional" name="dd910">
      <BusinessItems>
        <RelationalDataItem name="bi928" base="bi762"/>
        <RelationalDataItem name="bi932" base="bi929"/>
      </BusinessItems>
      <MultidimensionalQuery detail="false">
        <Axes>
          <Axis type="row">
            <BusinessItem ref="bi928"/>
          </Axis>
          <Axis type="column">
            <BusinessItem ref="bi932"/>
          </Axis>
        </Axes>
        <ColumnSortItems>
          <SortItem ref="bi932" sortDirection="ascending"/>
        </ColumnSortItems>
      </MultidimensionalQuery>
    </DataDefinition>
    <DataDefinition dataSource="ds744" type="multidimensional" name="dd805">
      <BusinessItems>
        <RelationalDataItem name="bi806" base="bi745"/>
        <RelationalDataItem name="bi807" base="bi746"/>
        <RelationalDataItem name="bi809" base="bi748"/>
        <RelationalDataItem name="bi812" base="bi751"/>
        <RelationalDataItem name="bi815" base="bi754"/>
        <RelationalDataItem name="bi816" base="bi755"/>
        <RelationalFilterItem label="Avancerat filter 1" name="bi1039">
          <EditorProperties>
            <Property key="complexity">ADVANCED</Property>
          </EditorProperties>
        </RelationalFilterItem>
      </BusinessItems>
    </DataDefinition>
  </DataDefinitions>
</SASReport>
```

Lite blandat

Ctrl+Alt+P: Performance



The screenshot shows a performance report window in SAS Visual Analytics Designer. The window title is 'SAS Visual Analytics Designer'. The report content is as follows:

```
Report loaded '/Shared Data/FAN S Norge/Tips & Tricks'.  
Time: 1499 ms.  
Processed BIRD  
Time: 314 ms.  
Query time for 'Data Label 1'.  
Time: 823 ms.  
Renderer complete for 'Data Label 1'.  
Time: 165 ms.  
Render complete for Introduktion till Parametrar  
Time: 2179 ms.  
Time taken since report was requested to be opened
```

System information:

Version:	7.3
Flex Commons Version:	4.7
Locale:	en_US
Operating System:	Windows 7
Browser:	Unknown Browser
Flash version:	WN 24,0,0,221 (Debug=false)
Debug SWF:	false
Total Memory:	235.09 mb
Private Memory:	500.79 mb
Free Memory:	43.38 mb

Buttons: Copy, Close



Lite blandat

Ctrl+Alt+I: Interaktioner

SAS Visual Analytics Designer

Source	Target	Type	Derived	Dependencies	Usages
Lista 1	Korstabell 1	filter	false	Bilmodell	
Kakekediagram 1	Listabell 2	filter	false	Knappetikett	
Drop-Down List 2	List Table 1	filter	true	Ursprung	
Drop-Down List 4	List Table 1	filter	true	Tillverkare	
Drop-Down List 3	List Table 1	filter	true	Biltyp	
Drop-Down List 2	Text 3 (3)	filter	true		
Drop-Down List 4	Text 3 (3)	filter	true		
Drop-Down List 3	Text 3 (3)	filter	true		
Drop-Down List 2	Slider 1	filter	true	Ursprung	
Drop-Down List 4	Slider 1	filter	true	Tillverkare	
Drop-Down List 3	Slider 1	filter	true	Biltyp	
Text Input 1	Data Label 1	parameter	true	Timmar	DataItem: Genomsnittshastighet
Text Input 1 (1)	Data Label 1	parameter	true	Minuter	DataItem: Genomsnittshastighet
Text Input 1 (1) (1)	Data Label 1	parameter	true	Sekunder	DataItem: Genomsnittshastighet
Text Input 1 (1) (1) (1)	Data Label 1	parameter	true	Distans	DataItem: Genomsnittshastighet
Text-input 1	Lista 1	parameter	true	ListTabSok	Local Filter: IF GetWord(ListTabSok 1) NotMissing RETURN (UPCase(e...
Text-input 2	Korstabell 1	parameter	true	MultiKoiSok	Local Filter: UpCase(Ursprung) Contains UpCaseMulti...
Drop-Down List 2	Drop-Down List 4	parameter	true	Ursprung Parameter	Local Filter: Ursprung = Ursprung Parameter
Drop-Down List 4	Drop-Down List 3	parameter	true	Tillverkare Parameter	Local Filter: Tillverkare = Tillverkare Parameter
Slider 1	List Table 1	parameter	true	ListprnsParameter	Display Rule: Listprns (\$) > ListprnsParameter
Knappfält 1	Stapelkediagram 1	parameter	true	Kategori	DataItem: Vald Kategori
Knappfält 1	Data Label 3	parameter	true	Kategori	DataItem: Kategorietikett
Knappfält 1 (1)	Stapelkediagram 1	parameter	true	Variabel	DataItem: Vald Variabel
Knappfält 1 (1)	Data Label 3 (1)	parameter	true	Variabel	DataItem: Variabeletikett
Knappfält 2	Stapelkediagram 1	parameter	true	Valuta	DataItem: Vald Variabel
Knappfält 1 (2)	My custom boxplot 2 1	parameter	true	Kategorier	DataItem: Vald Kategori 2

Close



Lite blandat

Ctrl+Alt+U: parametar, beräkningar mm

```
SAS Visual Analytics Designer
<?xml version="1.0" encoding="UTF-8"?>
<SASReport xmlns="http://www.sas.com/sasreportmodel/bird-3.2.6" createdVersion="3.2.6" dateCreated="2017-03-07T14:27:05Z" dateModified="2017-03-07T14:27:04Z">
  <History>
    <Versions>
      <Version key="3.2.6" lastDate="2017-03-07T14:27:05Z"/>
    </Versions>
  </History>
  <SASReportState date="2017-03-07T14:27:04Z">
    <Parameters>
      <Parameter prompt="pr68" dataType="double">1</Parameter>
      <Parameter prompt="pr69" dataType="double">34</Parameter>
      <Parameter prompt="pr70" dataType="double">13</Parameter>
      <Parameter prompt="pr87" dataType="double">43.98</Parameter>
      <Parameter prompt="pr935" dataType="string">&apos;&apos;</Parameter>
      <Parameter prompt="pr1035" dataType="string">&apos;&apos;</Parameter>
      <Parameter prompt="pr10454" dataType="string">&apos;&apos;</Parameter>
      <Parameter prompt="pr10455" dataType="string">&apos;&apos;</Parameter>
      <Parameter prompt="pr10510" dataType="double">28925</Parameter>
      <Parameter prompt="pr3541" dataType="string">&apos;Antal Cylindrar&apos;</Parameter>
      <Parameter prompt="pr3648" dataType="string">&apos;Axelavstånd&apos;</Parameter>
      <Parameter prompt="pr4144" dataType="string">&apos;&apos;</Parameter>
      <Parameter prompt="pr9735" dataType="string">&apos;Biltyp&apos;</Parameter>
    </Parameters>
    <Data>
      <queryRequests>
        <queryRequest data="dd910" dataLevel="custom">
          <expressions>
            <expression type="sort">sortItem($[b1932], &apos;ascending&apos;)</expression>
          </expressions>
        </queryRequest>
        <queryRequest data="dd805" dataLevel="custom">
          <expressions>
            <expression type="filter" dataStage="detail">and(eq($[b1807], &apos;3.5 RL 4dr&apos;))</expression>
            <expression type="sort">sortItem($[b1809], &apos;ascending&apos;)</expression>
            <expression type="sort">sortItem($[b1806], &apos;ascending&apos;)</expression>
            <expression type="sort">sortItem($[b1807], &apos;ascending&apos;)</expression>
          </expressions>
        </queryRequest>
        <queryRequest data="dd830" dataLevel="custom">

```

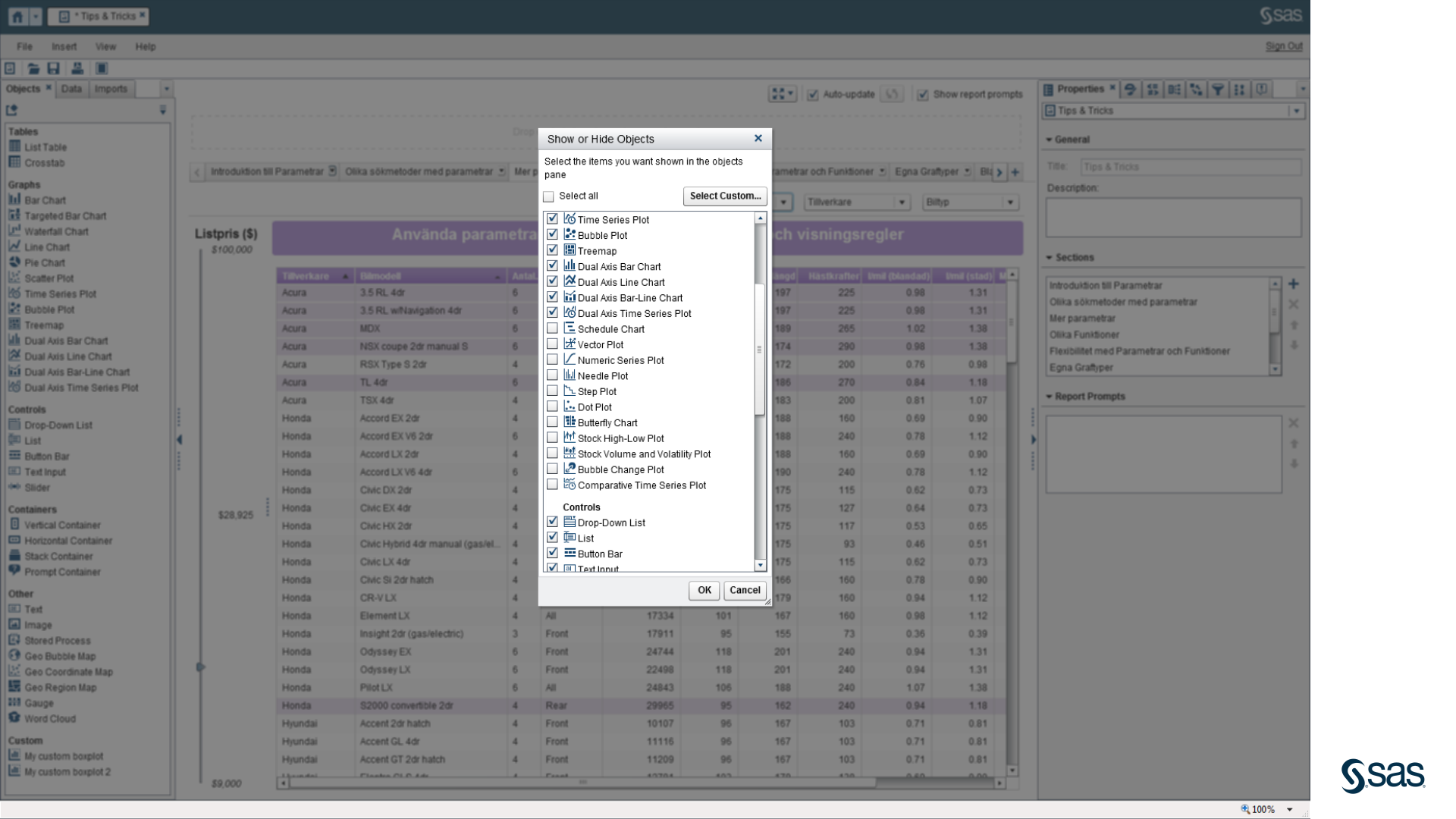


Lite blandat

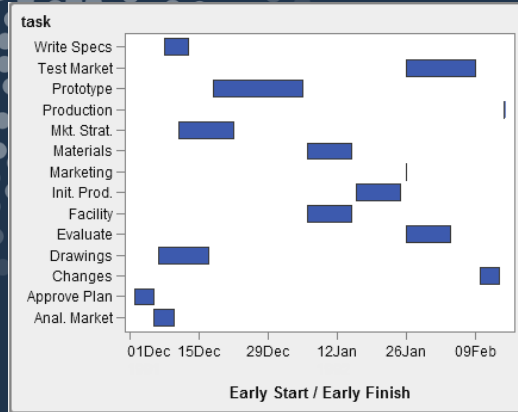
Ctrl+Alt+L: LASR debugging

```
SAS Visual Analytics Designer
1 action=Summary "name=HPS_KALLES_CARS" "Flags=0x80" "Flags2=0x18000" "GroupByFormatNames=$CHAR6_,$CHAR13_,$CHAR40_" "GroupByVarNames=Origin,Make,Model" Iparm0=50000 MaxResponse
2 action=TableInfo "name=HPS_KALLES_CARS"
3 action=Summary "name=HPS_KALLES_CARS" "Flags=0x80" "Flags2=0x18000" "GroupByFormatNames=$CHAR40_" "GroupByVarNames=Model" Iparm0=50000 MaxResponseCount=50000 "OrderByAggregat
4 if (NOT(MISSING((KSCAN(' ',1,0)))) then do;
5 _vad_calculated_3= ((KINDEX(UPCASE(KCOMPRESS(' Model'n),(KSCAN(' ',1,0)) GT 0) OR (KINDEX(UPCASE(KCOMPRESS(' Model'n),(KSCAN(' ',2,0)) GT 0) OR (KINDEX(UPCASE(KCOMPRESS(' Mode
6 end;
7 else do;
8 _vad_calculated_3= NOT(MISSING(' Model'n));
9 end;
10 ;
11 * TempComputedColumnNames=_vad_calculated_1,_vad_calculated_3 "VarNames=_vad_calculated_1" "WhereClause=(' _vad_calculated_3'n <> 0)"
12 action=TableInfo "name=HPS_KALLES_CARS"
13 action=Summary "name=HPS_KALLES_CARS" "Flags=0x80" "Flags2=0x18000" "GroupByFormatNames=$CHAR6_,$CHAR13_,$CHAR40_" "GroupByVarNames=Origin,Make,Model" Iparm0=50000 MaxResponse
14 action=TableInfo "name=HPS_KALLES_CARS"
15 action=Summary "name=HPS_KALLES_CARS" "Flags=0x80" "Flags2=0x18000" "GroupByFormatNames=$CHAR6_,$CHAR13_,$CHAR40_" "GroupByVarNames=Origin,Make,Model" Iparm0=50000 MaxResponse
16 action=TableInfo "name=HPS_KALLES_CARS"
17 action=Summary "name=HPS_KALLES_CARS" "Flags=0x80" "Flags2=0x18000" "GroupByFormatNames=$CHAR6_," "GroupByVarNames=Origin" Iparm0=50000 MaxResponseCount=50000 "OrderByAggregat
18 * TempComputedColumnNames=_vad_calculated_1" "VarNames=_vad_calculated_1"
19 action=TableInfo "name=HPS_KALLES_CARS"
20 action=Summary "name=HPS_KALLES_CARS" "Flags=0x80" "Flags2=0x18000" "GroupByFormatNames=$CHAR13_" "GroupByVarNames=Make" Iparm0=50000 MaxResponseCount=50000 "OrderByAggregatc
21 * TempComputedColumnNames=_vad_calculated_1" "VarNames=_vad_calculated_1" "WhereClause=(1 = 1)"
22 action=TableInfo "name=HPS_KALLES_CARS"
23 action=Summary "name=HPS_KALLES_CARS" "Flags=0x80" "Flags2=0x18000" "GroupByFormatNames=$CHAR6_" "GroupByVarNames=Type" Iparm0=50000 MaxResponseCount=50000 "OrderByAggregator
24 * TempComputedColumnNames=_vad_calculated_1" "VarNames=_vad_calculated_1" "WhereClause=(1 = 1)"
25 action=TableInfo "name=HPS_KALLES_CARS"
26 action=Summary "name=HPS_KALLES_CARS" "Flags=0x80" "Flags2=0x18000" "GroupByFormatNames=$CHAR13_,$CHAR40_,$CHAR2_,$CHAR5_" "GroupByVarNames=Make,Model,Cylinders,DriveTrain" I
27 _vad_calculated_2= MISSING;
28 end;
29 else do;
30 _vad_calculated_2= (3.784 / ('MPG_Highway'n * 1.6093));
31 end;
32 _vad_calculated_1=( _vad_calculated_2 * 10.0);;
33 if (((('MPG_City'n * 1.6093) = 0.0)) then do;
34 _vad_calculated_9= MISSING;
35 end;
36 else do;
37 _vad_calculated_9= (3.784 / ('MPG_City'n * 1.6093));
38 end;
39 _vad_calculated_8=( _vad_calculated_9 * 10.0);;
```

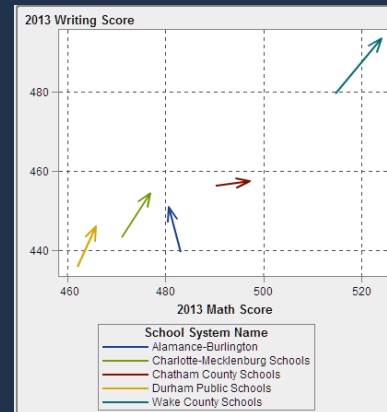
Copy Close



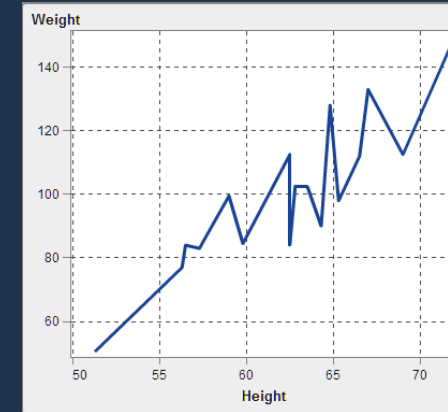
Schedule Plot



Vector Plot



Numeric Series Plot



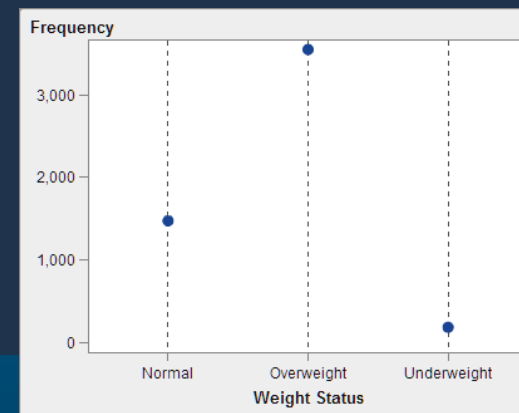
Needle Plot



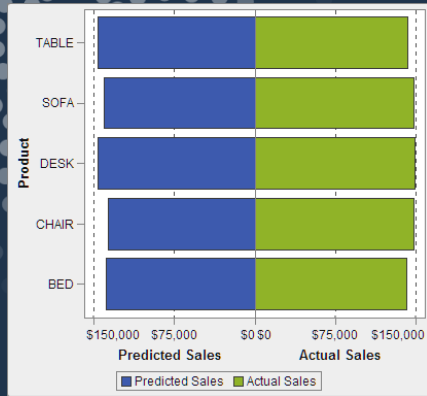
Step Plot



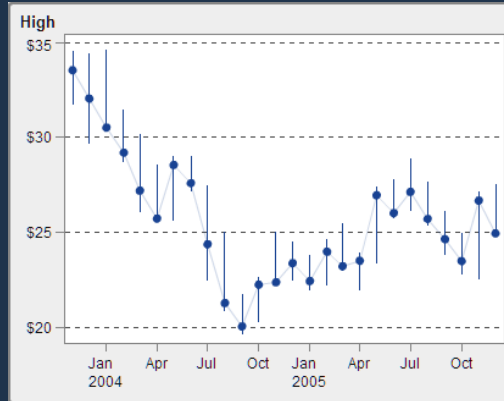
Dot Plot



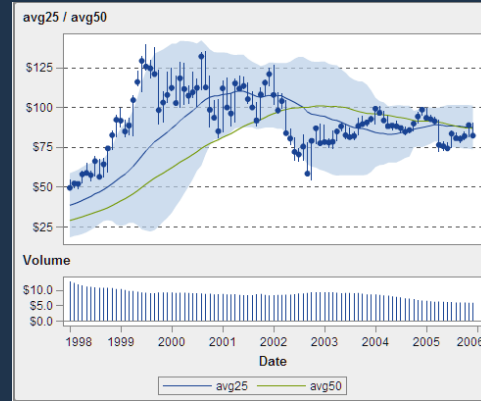
Butterfly Chart



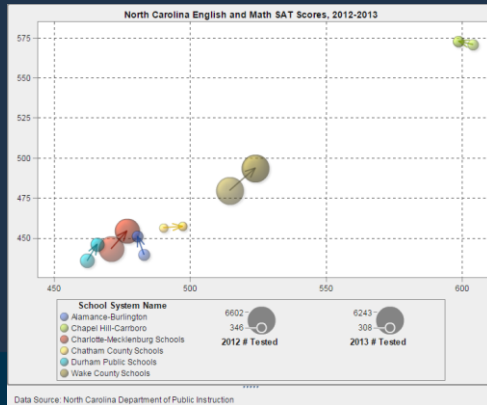
Stock High-Low Plot



Stock Volume and Volatility Plot



Bubble Change Plot



Comparative Time Series Plot





Det var allt! Frågor?

Niklas Schulman – SAS Institute Sverige