



Getting started with SAS enterprise guide

Host

Barrie Neill



Presenter

Peter Hobart



Managing the webinar

- Control bar opened with the white arrow in the orange box



What is your experience
with SAS Enterprise Guide?

Getting started with sas enterprise guide

AGENDA

- What is SAS Enterprise Guide?
- An overview of the interface
- Opening a dataset or table
- Joining tables
- Filtering and Querying
- Reporting
- Resources

Are you a SAS Programmer?

What is SAS enterprise guide?

- Enterprise Guide is an easy to use tool for investigating your data
- It is also a powerful programming environment
- It can create and launch Stored Processes
-It's a code generator....



What version of SAS Enterprise Guide are you on?

Key Features

SAS / Enterprise Guide versions

	4.1	4.2	4.3	5.1	6.1	7.1
Split code window / project view	Y	Y	Y	Y	Y	Y
Stored process creation	Y	Y	Y	Y	Y	Y
SAS Report layout builder	Y	Y	Y	Y	Y	Y
Post - it style project notes	Y	Y	Y	Y	Y	Y
Conditional execution	N	Y	Y	Y	Y	Y
Code Autocomplete / syntax hints	N	N	Y	Y	Y	Y
SAS Code analyser (*enhanced)	N	N	Y	Y	Y*	Y*
Data Explorer	N	N	N	Y	Y	Y
Support for parallel execution	N	N	N	Y	Y	Y
Export data as an XLSX file	N	N	N	Y	Y	Y
Code re-layout on Ctrl+i	N	N	N	Y	Y	Y
Log summary window	N	N	N	N	Y	Y
Code Versioning & Data Step Debugger	N	N	N	N	N	Y
Bitness	32	32	32	32/64	32/64	32/64

Compatibility Matrix

SAS / Enterprise Guide versions

	4.1	4.2	4.3	5.1	6.1	7.1
9.1	Y	N	N	N	N	N
9.2	L	Y	Y	Y	Y*	Y
9.3	N	N	Y*	Y	Y	Y
9.4	N	N	N	Y*	Y	Y

L : Limited support (Enterprise Guide and SAS on same host, no metadata)

* With appropriate hotfixes applied

Note SAS 9.4 is not supported on Windows XP

<http://supportprod.unx.sas.com/kb/34/960.html>





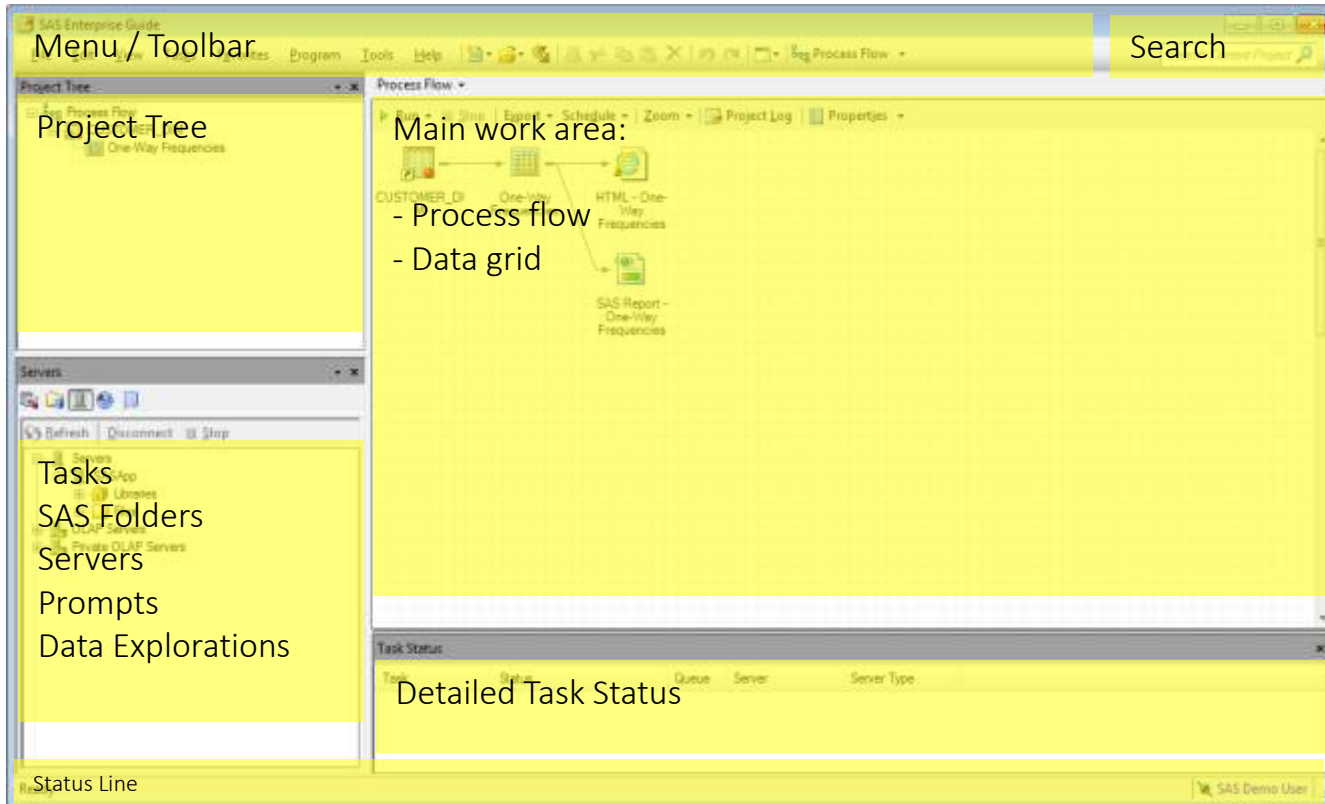
Exploring the interface

Using the interface

- Interface layout
- Getting data
- Preparing data
- Running a Task
- Mix and match tasks and coding

Interface

Main areas



Interface

Extensively customisable

- Windows
 - Open / Close
 - Resize
 - Dock left or right
 - Autohide
- Choose which other items to display using the View menu
 - Detailed Task Status
 - Project Log
 - Log Summary



Questions?



Opening a data set or a table

Using a task

First, get some data

- Adding data to a project - multiple methods
 - File > Open Data (SAS tables)
 - File > Import (XLS / XLSX / MDB / ACCDB / TXT / CSV / ASC / HTM etc...)
 - View>Servers... and navigate to the required item
 - Run SAS code to read or create data
 - Tasks > Data > Download
 - File > New > Data and type values into a new table
- By default, the table is added to the project and a window displays the first few rows



Using an Enterprise Guide Task

Demonstration

Using a task

Now choose a task

- Grouped by category under the Task menu
- Or select some data and right - click to choose an action
- Or use the task list window (bottom - left by default)
- (Or use code..)



Any questions?



Joining tables



Questions?



Filtering and querying



Questions?



Reporting on data

Using a Task

One - way frequencies

The screenshot shows the SAS One-Way Frequencies task configuration window. The window title is "One-Way Frequencies for SASApp:Orion Source Library.CUSTOMER_DIM". On the left, there is a navigation pane with options: Data, Statistics, Plots, Results, Titles, and Properties. The main area is titled "Data" and contains the following information:

- Data source: SASApp:Orion Source Library.CUSTOMER_DIM
- Task filter: None
- Variables to assign: A list of variables including Customer_ID, Customer_Country, Customer_Gender, Customer_Name, Customer_FirstName, Customer_LastName, Customer_BirthDate, Customer_Age_Group, Customer_Type, Customer_Group, and Customer_Age.
- Task roles: A list of roles including Analysis variables, Customer_Country, Customer_Age_Group, Frequency count (Limit: 1), and Group analysis by.

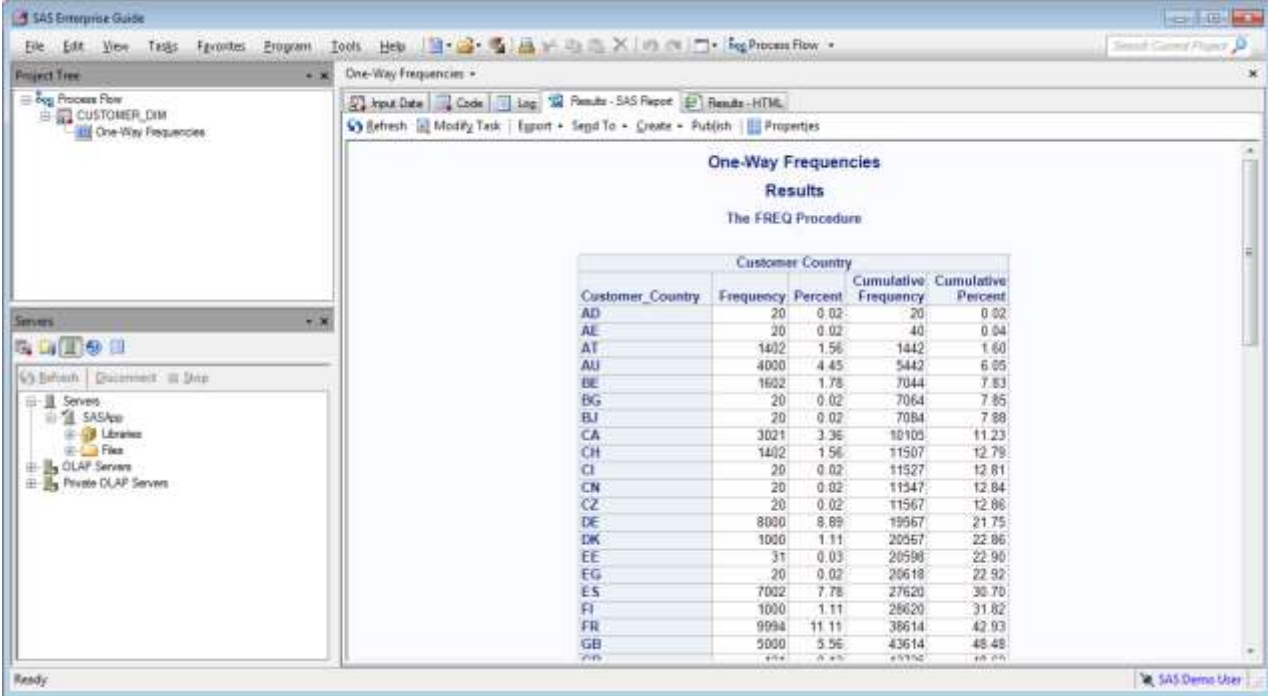
At the bottom of the window, there is a "Preview code" button and a "Run" button (which is highlighted in blue, indicating it is enabled). Other buttons include "Save", "Cancel", and "Help".

- Assign columns to the required roles
- As soon as the task has enough information the Run button is enabled

Using a task

One - way frequencies

- Results are added to the project and displayed
- Output types and styles can be customised



The screenshot shows the SAS Enterprise Guide interface. The Project Tree on the left displays a process flow for 'CUSTOMER_DIM' with a task named 'One-Way Frequencies'. The main window shows the results of this task, titled 'One-Way Frequencies Results' and 'The FREQ Procedure'. The results are presented in a table with columns for Customer_Country, Frequency, Percent, Cumulative Frequency, and Cumulative Percent.

Customer Country				
Customer_Country	Frequency	Percent	Cumulative Frequency	Cumulative Percent
AD	20	0.02	20	0.02
AE	20	0.02	40	0.04
AT	1402	1.56	1442	1.60
AU	4000	4.45	5442	6.05
BE	1602	1.78	7044	7.83
BG	20	0.02	7064	7.85
BJ	20	0.02	7084	7.88
CA	3021	3.36	10105	11.23
CH	1402	1.56	11507	12.79
CI	20	0.02	11527	12.81
CN	20	0.02	11547	12.84
CZ	20	0.02	11567	12.86
DE	8000	8.89	19567	21.75
DK	1000	1.11	20567	22.86
EE	31	0.03	20598	22.90
EG	20	0.02	20618	22.92
ES	7002	7.78	27620	30.70
FI	1000	1.11	28620	31.82
FR	9994	11.11	38614	42.93
GB	5000	5.56	43614	48.48

What document types do you use for reporting?



Questions?



Mix and Match: Exploding a pie segment

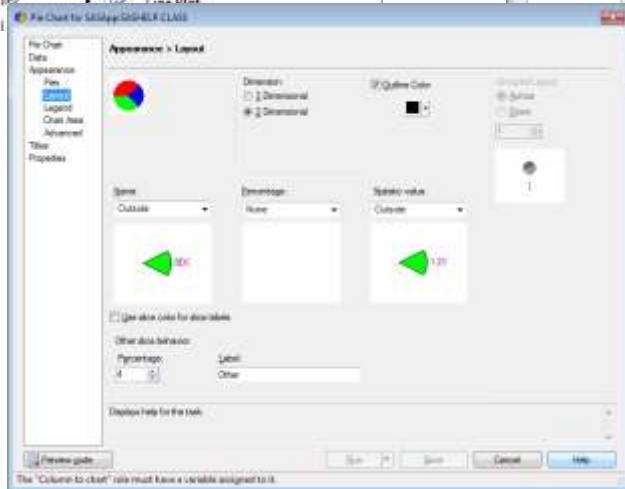
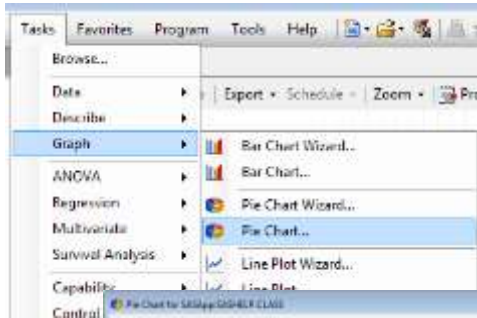
Demonstration

Mix and Match

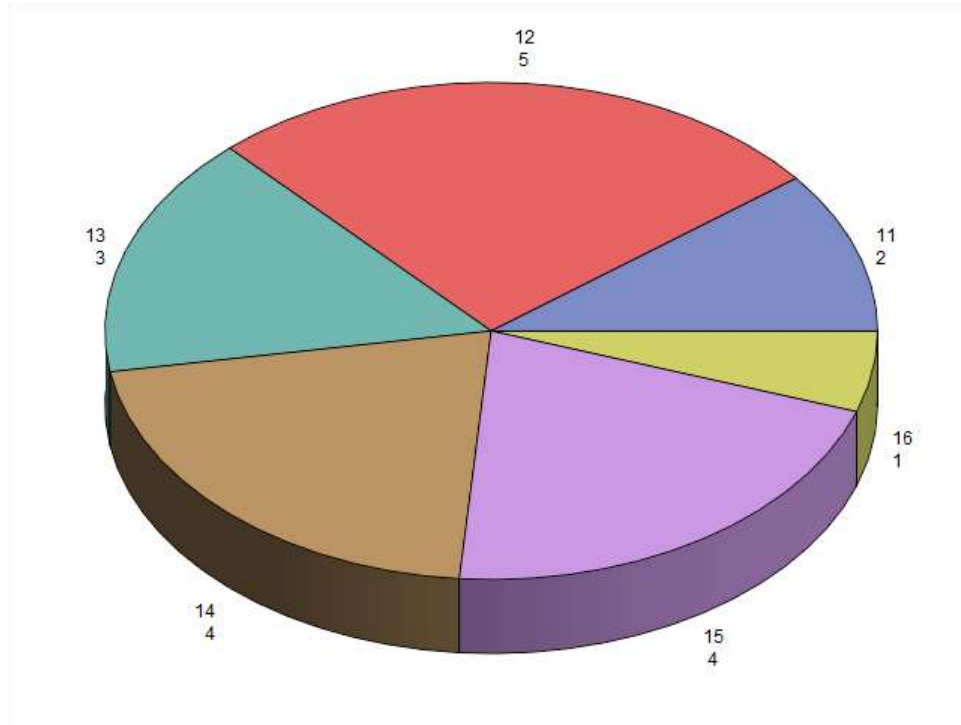
- Use SAS Enterprise Guide as an aid in rapid application development
- For any task that is unfamiliar / used infrequently
 - Use the tasks and wizards to quickly get close to the desired result
 - Explore options without having to look up syntax
 - Then modify / extend the generated code as needed

Pie Chart task

Many options - but not one to explode a segment

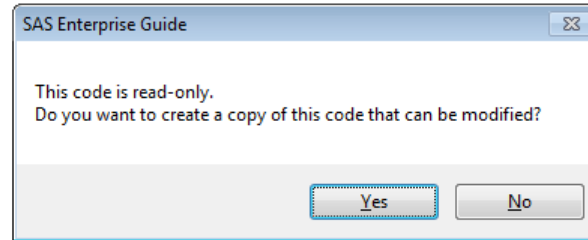


Initial result



When you try editing the code this prompt appears

```
FOOTNOTE;  
FOOTNOTE1 "Generated by the SAS System (&_SASERVERNAME, &SYS  
PROC GCHART DATA =WORK.SORTTempTableSorted  
;  
    PIE3D      Age /  
    NOLEGEND  
    SLICE=OUTSIDE  
    PERCENT=NONE  
    VALUE=OUTSIDE  
    OTHER=4  
    OTHERLABEL="Other"  
    COUTLINE=BLACK  
    DISCRETE  
NOHEADING  
;  
/* -----
```

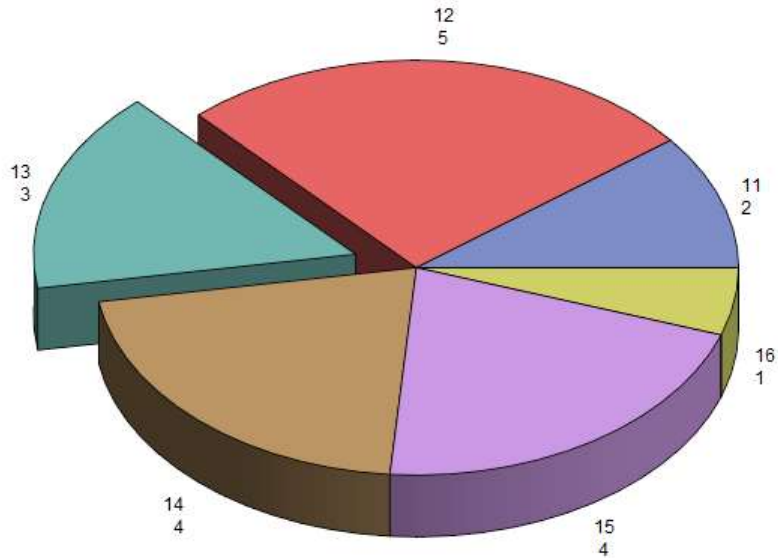


Modify the new version of the code as needed

```
OTHERWISE=NONE  
COUTLINE=BLACK  
DISCRETE  
NOHEADINGS  
explode=13
```

The explode= option specifies values we want to pull out from the pie

The final result





Questions?

Resources

More information and sources of help

SAS customer loyalty

http://www.sas.com/en_gb/customer-loyalty.html

Links to hundreds of free resources

White paper on ODS Excel

<http://support.sas.com/resources/papers/proceedings14/SAS177-2014.pdf>

ODS focus area on support.sas.com

<http://support.sas.com/rnd/base/ods/index.html>

Tip sheets, white papers, more..





Thankyou

sas.com