

# CONDITIONAL PROCESSING IN ENTERPRISE GUIDE

Judy Orr Lawrence – SAS Training Specialist



*CASE..WHEN..THEN..ELSE*

*IF..THEN..ELSE*

## AGENDA

# ENTERPRISE GUIDE CONDITIONAL PROCESSING

### *Uses of Conditional Processing*

- *Create New Variables*
- *Control Task Execution*

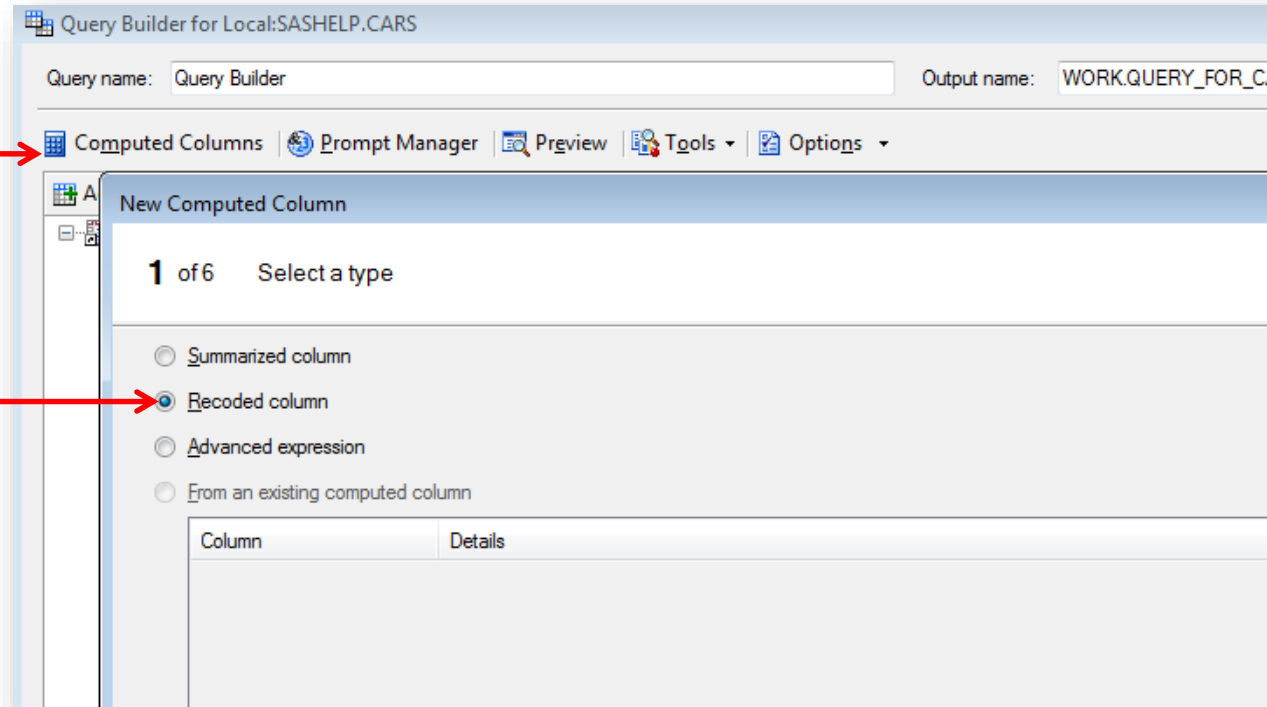
### *Applying Conditional Processing*

- *Recode Values using Query Builder*
- *Case Statements*
- *Add Conditions to Tasks*

# CONDITIONAL PROCESSING

## CREATE NEW VARIABLES

### Query Builder ~ Computed Column ~ Recode



# CONDITIONAL PROCESSING

## CREATE NEW VARIABLES

### Recode ~ Discrete Values

**IF** → Origin

**THEN** → North America

**New Computed Column**

2 of 5 Select a column

- Query Builder
- t1 (CARS)
  - Make
  - Model
  - Type
  - Origin**
  - Drive Train
  - MSRP
  - Invoice
  - Engine Size
  - Cylinders
  - Horsepower
  - MPG\_City
  - MPG\_Highway
  - Weight
  - Wheelbase
  - Length

**Specify a Replacement**

Replace Values | Replace a Range | Replace Condition

USA

With this value: North America

Enclose this value in quotes

OK Cancel Help

# CONDITIONAL PROCESSING

## CREATE NEW VARIABLES

### Recode ~ Range of Values

The image shows a SAS interface with two windows. The background window is titled "New Computed Column" and shows a tree view of variables for a dataset named "t1 (CARS)". The "MSRP" variable is selected. The foreground window is titled "Specify a Replacement" and has three tabs: "Replace Values", "Replace a Range", and "Replace Condition". The "Replace a Range" tab is active. It contains the following fields:

- Set a lower limit: 0
- Set an upper limit: 25000
- With this value: Inexpensive
- Enclose this value in quotes

Red dashed arrows indicate the logic: "IF" points to the "MSRP" variable in the tree, "THEN" points to the "Inexpensive" value in the "With this value:" field, and another arrow points from the "MSRP" variable to the "Set a lower limit" field.

# CONDITIONAL PROCESSING

## CREATE NEW VARIABLES

### Recode ~ Based on a Condition

Specify a Replacement

Replace Values | Replace a Range | **Replace Condition**

Identifier: t1.Origin

Column Name: Origin

Operator: In a list

Generate filter for a prompt value (only applies to prompt types)

Values: Asia  
Europe

Enclose values in quotes

With this value: t1.MSRP \* 1.1

Enclose this value in quotes

OK Cancel Help

IF

THEN

Extensive list of operators

Advanced Expression Editor

# CONDITIONAL PROCESSING

## CREATE NEW VARIABLES

### Case Statement

**Properties for Continent**

Column Name: Continent  
Label: Continent  
Format:  
Summary: None  
Expression: `CASE  
WHEN 'USA' = t1.Origin THEN 'North America'  
ELSE t1.Origin  
END`  
Identifier: Continent

**Edit Computed Column**

1 of 3 Build an advanced expression

Enter an expression:  
`CASE  
WHEN t1.Model CONTAINS 'convertible' AND t1.MSRP > 50000  
THEN 'Promotion'  
ELSE 'No Promotion'  
END`

Home Next Back End Undo Redo Edit Favorites Validate  
+ - \* / \*\* || (x) 'x' "x" , 'abc'n

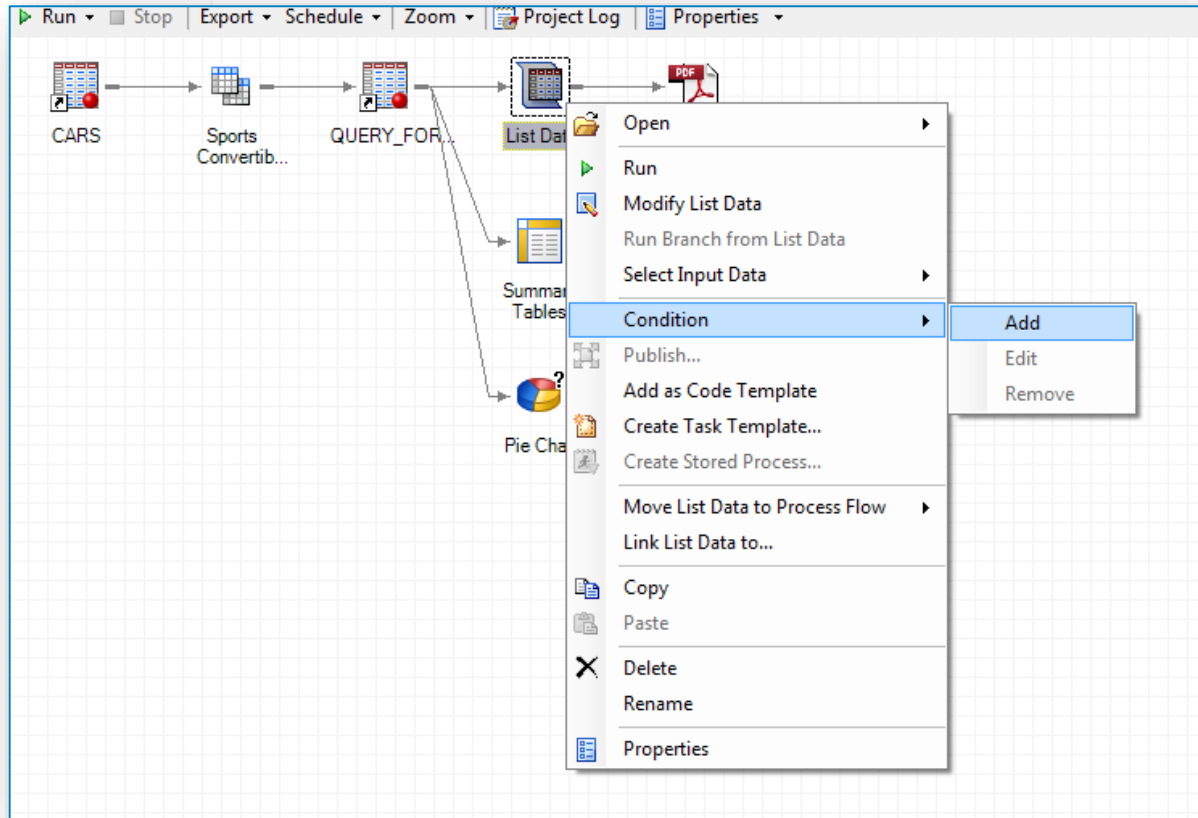
Functions  
Tables  
t1 (CARS)  
Selected Columns  
Computed Columns

**EG  
Created**

**Manually  
Created**

# CONDITIONAL PROCESSING

## CONTROL TASK EXECUTION





# CONDITIONAL PROCESSING

## CONTROL TASK EXECUTION

IF

Conditional Processing

If

Else if

If this condition is true:

Day of month (1-31) equal to Tuesday, November 01, 2011

Add Edit Delete Co

Then run this task:

Summary Tables

Add Else If Delete Else If

Else run this task:

(none)

OK

Condition can be based on:

- Dataset value
- Date / Time value
- Prompt value
- Macro variable value

THEN

Add a Condition

Based on:

Sports\_C  
Prompts  
Current time or date  
Macro variable

Definition

Column:

Row:

Operator:

Value:

Add Cancel



**DEMO**



# TRAINING

[HTTP://SUPPORT.SAS.COM/TRAINING/CANADA/](http://support.sas.com/training/canada/)

## Course

SAS Enterprise Guide 1: Querying and Reporting

SAS Enterprise Guide for Experienced SAS Programmers

SAS Enterprise Guide 2: Advanced Tasks and Querying

Creating Reports and Graphs with SAS Enterprise Guide

Available as Public  
Live-Web & E-Learning  
Courses

This Course includes  
Conditional Processing

**QUESTIONS?**



**THANK YOU!**

---

JUDY.ORRLAWRENCE@SAS.COM



**THE  
POWER  
TO KNOW.**