



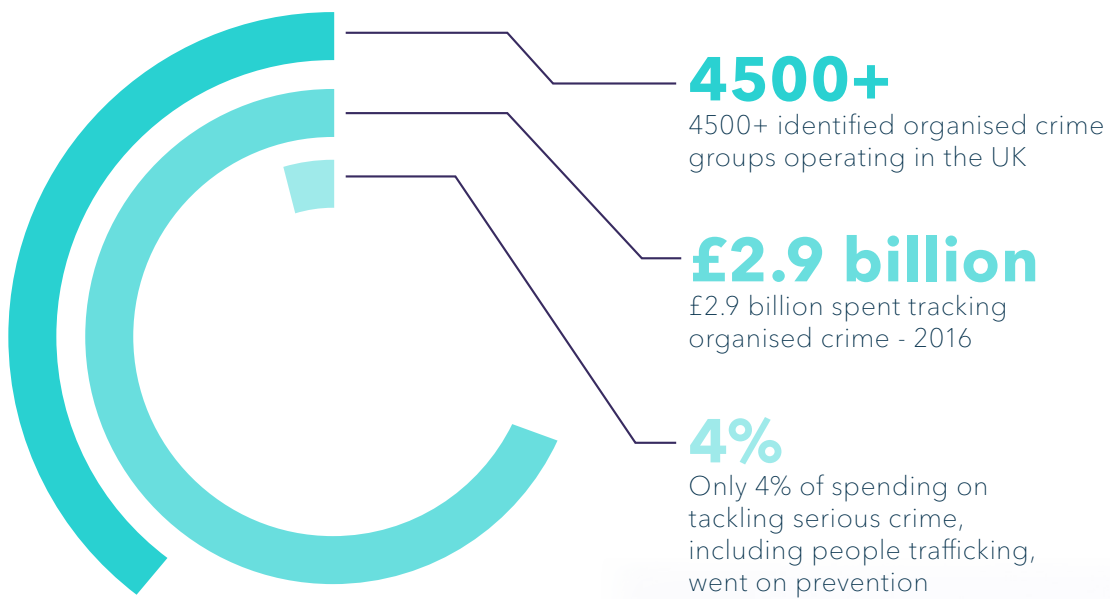
Building the world's most effective border.

Make it a reality with the help of AI and data-driven insights.

Protecting UK citizens from incoming threats involving organised crime, smuggling, terrorism, drugs and trafficking is a growing challenge, especially as the UK opens up new trade routes. Add in the need to support the economic prosperity and wellbeing of everyone living in the UK and the Home Office has a serious set of objectives to achieve.

Just how can the department better detect threats and investigate the complex nature of terrorist or extremist cells and those of organised crime gangs as they move in and out of the country? Getting proactive has to begin with making better use of the huge volumes of data that already exist, to provide better intelligence to act on.

The challenge in a snapshot



How can SAS help?



Create a single view of the truth:

Build the world's most effective border by turning data from the Single Trade Window, Electronic Travel Authorisation, and other border industry sources, including DEFRA, HMRC, The Ports Authority and others, into actionable insights.



Detect illegal activity faster and investigate more effectively:

Arm your frontline investigators with richer, deeper insights into companies, individuals, hidden gang behaviour, associations, routes and more. Our software's ability to analyse data in real time allows your department to be more agile in keeping pace with constantly changing criminal activity.



Get proactive about prevention:

Predict events and model their outcomes to de-risk decision-making and more effectively allocate resources - helping you achieve more in times of budget pressure.



Support economic growth:

Filter out legitimate activity from suspicious border activity to help keep the UK open for business.



Why SAS?

We're the world-leader in real-time analytics and AI, with a long heritage working alongside **UK Government** departments.

We work with border teams and law enforcement departments around the world helping them take a new, data-driven approach to tackling crime, improving operational efficiency and reducing risk to the public and employees.

HMRC works with SAS on its Job Retention Scheme. We help ensure that help is delivered swiftly to those who need it, while defending the UK's resources against compliance and fraud risk that in some cases emanates from organised crime. Ensuring data quality was key. Our solution helped improve the user experience and enabled HMRC to handle increasing volumes of digital transactions while mitigating risk.

As the threat landscape continues to evolve, the insights SAS can provide will be able to play an active role in helping you build and maintain the world's most effective border.

See how our solutions work in real-world situations.