

SAS Marketing Automation 5.1

Unix Install Instructions for Hot Fix 51MA13

Introduction

This document describes the steps necessary to install and deploy the SAS Marketing Automation 5.1 Hot Fix Release 51MA13 for a Unix environment. ***Please take a moment to read through this entire document before attempting to install the Hot Fix.*** There are six steps to this Hot Fix that must all be completed:

- 1) Installation of the updates to the SAS Marketing Automation Components
- 2) Post-configuration and deployment of the SAS Marketing Automation Application Server
- 3) Post-configuration and deployment of the SAS Customer Intelligence Reporting Application
- 4) Post-configuration and deployment of the SAS Marketing Automation Web Components update (optional)
- 5) Install the changes to macros and stored processes on the SAS Compute Server
- 6) Customer Intelligence Reporting Common Data Model updates

Fix Details

The Hot Fix 51MA13 addresses the issue(s) in 5.1 of SAS Marketing Automation software on Windows as documented in the "Issue(s) Addressed" section of the Hot Fix download page:

<http://ftp.sas.com/techsup/download/hotfix/ma51.html#51MA13>

You may also access SAS Notes from the Technical Support Main page:

<http://support.sas.com/techsup/search/sasnotes.html>

SAS Marketing Automation Hot Fixes are cumulative. Only the latest Hot Fix need be applied to install all fixes. The Hot Fix needs to be applied to all tiers. Servers (Windows and/or Unix) and clients (Windows). Please be sure to use the Hot Fix installer appropriate to the server/client operating system.

Although the actual fixes incorporated in the Hot Fix are cumulative there are changes to the SAS Customer Intelligence Reporting Common Data Model (CDM) which depend on whether or not you have already installed any Hot Fixes. See **Section 7** and **Appendix A** of this document before making any CDM changes.

Please review SAS Note SN-018542, (<http://support.sas.com/kb/18/542.html>) as the Hot Fix install can overwrite the Isfadmin password and prevent campaigns from being directly scheduled from Campaign Studio.

1. Obtaining the Hot Fix Bundle

Save the Hot Fix bundle (archive file) from the SAS Technical Support Hot Fix web site (<http://ftp.sas.com/techsup/download/hotfix/ma51.html>) to a work directory on the server using the SAS user account that originally installed SAS Marketing Automation. This is typically the 'sas' account. The name of the downloaded archive file will vary depending on the Unix platform. The downloaded file will be one of the following:

- 51ma13r6.tar for AIX
- 51ma13s6.tar for Solaris
- 51ma13hx.tar for HP Itanium

There are check boxes included at each step to assist you with verification of the completion of each step as you work through these instructions.

1.1 Installation

You should perform these installation steps for *each machine* where the following Marketing Automation components have been installed.

- SAS Customer Intelligence Core Mid-Tier
- SAS Customer Intelligence Web Components
- SAS Customer Intelligence Studio
- SAS Customer Intelligence Plug Ins for SAS Management Console
- SAS Marketing Automation Launcher
- SAS Marketing Automation Integration Utilities
- SAS Customer Intelligence Reporting Mid-Tier
- SAS Marketing Automation Server Processes (macros and stored processes)

Once the Hot Fix has been installed on your Unix servers you will need to download and install the Windows 51MA13 Hot Fix onto all of your client PCs

1.2 Unarchive the downloaded tar file

Unarchive the 51ma13xxx tar file using the following command:

```
tar -xvf 51ma13xxx.tar
```

where xxx is the appropriate suffix for your unix platform.

This will extract the following files into a new 51ma13_xxx directory. For example, the AIX tar file 51ma13r6.tar will extract into 51ma13_r64. Sample output from the above tar command is shown below. The sizes of the files will vary based on the Unix platform. The sample below shows messages from an AIX tar file extract.

```
x 51ma13_r64/emaauxdataio_r64.tar, 34672640 bytes
x 51ma13_r64/emacore_r64.tar, 42054960 bytes
x 51ma13_r64/emalauncher_r64.tar, 31641600 bytes
x 51ma13_r64/emasmc_r64.tar, 34713600 bytes
x 51ma13_r64/emawebnport_r64.tar, 34826240 bytes
x 51ma13_r64/custintelmid_r64.tar, 34672640 bytes
x 51ma13_r64/mktautor6.tar, 441344 bytes
```

You can see from the tar files the following Marketing Automation Components will be updated by this Hot Fix:

- Marketing Automation Integration Utilities (emaauxdataio)
- Customer Intelligence Core Mid-Tier (emacore)
- Marketing Automation Launcher (emalauncher)
- Customer Intelligence Plugins to SAS Management Console (emasmc)
- Customer Intelligence Web Application (emawebnport)
- Customer Intelligence Reporting (custintelmid)
- Marketing Automation Server Processes (mktauto)

For each component on installed on your server, you'll need to unarchive the tar file and run the setup script. The files within the component archives are named similarly, so you will need to unarchive and execute the setup scripts one by one.

Sample AIX process shown below:

Step 1: Unarchive the component tar file

```
tar -xvf emauxdataio_r64.tar
```

This creates 3 new files in r64 subdirectory:

```
-rwxr-xr-x 1 sas staff 27813035 Oct 31 10:01 Setup_AIX_Power
-rw-r--r-- 1 sas staff 13 Oct 31 10:01 media.inf
-rw-r--r-- 1 sas staff 7603287 Oct 31 10:01 setup.jar
```

Step 2: Run Setup script to lay down component files.

```
cd r64
chmod +x Setup*
Setup_AIX_Power
```

Note that you must turn on the execute bit for the setup script the first time you perform the unarchive.

This setup command runs an InstallShield wizard to lay down the SAS components. A series of three screens will appear by the Installer that you must click through.

Step 3: Repeat steps 1 and 2 (above) for each component except the Marketing Automation Server Processes (mktauto – Section 6 discusses applying the SAS Compute Server changes) until the setup scripts matching the components installed on your server have been run.

Step 4: Once InstallShield Components have been run, you can verify the updated files as follows:

Mid-Tier

```
SASMarketingAutomationCore/4.1/Config/emacore_hf.xml (01/29/08)
SASMarketingAutomationCore/4.1/ear/sas.iquery.metadata.jar (06/04/09)
SASMarketingAutomationCore/4.1/ear/sas.iquery.dataservices.jar (06/04/09)
```

____ **Installation Ran Successfully**

2. Post-configuration and Deployment of the SAS Marketing Automation Application Server

2.1 Download Ant to Run the Post Configuration Script

Apache Ant is needed to run the post-configuration script for the SAS Marketing Automation Application Server that is included in this Hot Fix. Download and install Ant 1.7 from <http://ant.apache.org/>. See the Apache Ant Documentation for any install details.

Run `ant -version` from your command prompt and verify that you are accessing ant 1.7

Be sure `JAVA_HOME` is set correctly with the location of your java installation. Failure to do so will result in errors when running the ant command.

____ **Downloaded ANT and verified the version**

2.2: Run the Post-configuration Ant script

The 51MA13 Hot Fix has installed a post-configuration script, `emacore_hf.xml`, that will repackage `sas.analytics.crm.ma.core.ear` with the updated code and the deployment descriptor (`ejb-jar.xml`) that has already been configured for your environment. You will find `emacore_hf.xml` in the sas installation directory: `SASMarketingAutomationCore/4.1/Config/emacore_hf.xml`.

Navigate to the bin subdirectory where ant is installed:

Example: `cd /usr/local/ant/apache-ant-1.7.0/bin`

Set `JAVA_HOME` for session if needed for you specific installation:

Example: `export JAVA_HOME=/usr/java14`

Stop the SAS Remote Services server before running the ant script.

Run this command to execute the `emacore_hf.xml` script (all on one line)

```
ant -f emacore_hf.xml  
  -Dconfig.dir=<CONFIGDIR>  
  -Dtemp.dir=<TEMPDIR>  
  -Dinstall.loc=<INSTALL_DIR>
```

where

<CONFIGDIR> is the path to the Configuration Directory (eg. `/saswork/MAplan`) where the new `sas.analytics.crm.ma.core.ear` files are copied when the Hot Fix is applied by executing the ant scripts.

<TEMPDIR> is a path to an **empty** temporary directory for temp files. Make sure this location is empty so that the script can execute without errors when it performs the clean up.

<INSTALL_DIR> is the location of the product install (eg. `/saswork/SAS/SASMarketingAutomationCore/4.1`)

Helpful hint: create a `.sh` file with the command above in case you need to make corrections.

Example:

```
ant -f "/saswork/SAS/SASMarketingAutomationCore/4.1/Config/emacore_hf.xml"  
-Dconfig.dir="/saswork/MAplan" -Dtemp.dir="/saswork/hotfix_tmp"  
-Dinstall.loc="/saswork/SAS/SASMarketingAutomationCore/4.1"
```

Final messages from the execution of the script should be similar to:

SAS Marketing Automation hot fix 51MA13

BUILD SUCCESSFUL

Total time: 11 seconds

Note: A complete log from the ant script can be found in the SAS installation directory SASMarketingAutomationCore/4.1/emacore_hf.log.

____ **Successfully executed emacore_hf.xml script**

Verify core-remote jar and restart RemoteServices

The ant script will copy an updated sas.analytics.crm.ma.core-remote.jar into the configuration directory at Lev1/web/Deployments/RemoteServices/WEB-INF/lib. The new file will have a size of 713489 kb.

Once you verify the jar has been updated, restart your StartRemoteServices.bat script to restart the SAS Application Services.

____ **Restart Remote Services**

2.3: Run the Post-configuration Ant script for Customer Intelligence Reporting

The 51MA13 Hot Fix has installed a post-configuration script, custintelmid_hf.xml, that will repackage sas.analytics.crm.ma.ccbservice.war with updated code. You will find custintelmid_hf.xml in the SAS installation directory: /saswork/SAS/SASCustomerIntelligenceReporting/5.1/Config. Note this directory will contain a log called custintelmid_hf.log after the execution of this script. As with the previous step, execute the custintelmid_hf.xml script by using Apache Ant.

Open a command window and navigate to the bin subdirectory where ant is installed:

```
cd c:\apache-ant-1.7.0\bin
```

Run this command to execute the custintelmid_hf.xml script (all on one line)

```
ant -f custintelmid_hf.xml  
-Dconfig.dir=<CONFIGDIR>  
-Dtemp.dir=<TEMPDIR>  
-Dinstall.loc=<INSTALL_ DIR>
```

Helpful hint: create a .bat file with the command above in case you need to make corrections.

Example:

```
ant -f  
"/saswork/SAS/SASCustomerIntelligenceReporting/5.1/Config/custintelmid_hf.xml  
"  
-Dconfig.dir="/saswork/SAS/MA51Plan" -Dtemp.dir="c:/tempfh"  
-Dinstall.loc="/saswork/SAS/SASCustomerIntelligenceReporting/5.1"
```

Verify sas.analytics.crm.ma.ccbservice.war

The ant script will copy an updated sas.analytics.crm.ma.ccbservice.war into the configuration directory at Lev1/web/webapps. The script will have created a copy of the original war file suffixed with today's date.

The Customer Intelligence Reporting war module needs to be redeployed in its respective application server (Weblogic or Websphere) for the changes to take effect.

___ Successfully executed custintelmid_hf.xml script

2.4: Deployment of the MA core Jar file

If you are deploying to **BEA WebLogic**, please now follow the instructions under section 2.4.1: Deployment Instructions for BEA WebLogic.

If you are deploying to **IBM WebSphere**, please now follow the instructions under section 2.4.2: Deployment Instructions for IBM WebSphere.

2.4.1: Deployment Instructions for BEA WebLogic.

After logging into the Weblogic console, Navigate to Deployments==> Applications==>MACore sas.analytics.crm.ma.core.jar in the left panel. (Note that your application name may vary. The example below used the name MACore.) Click the Configuration tab to verify your deployment path is the Lev1/web/webapps/exploded directory where the updated jar now resides. (If you used some other path, you'll need to extract and copy the updated jar.)

Click the 'Deploy' tab at the top of the right window.

Click the 'ReDeploy Applications' button under the Actions column.

The screenshot shows the WebLogic Server Console interface. The left sidebar displays a tree view with 'SASSolutions' expanded, showing 'Servers', 'Clusters', 'Machines', 'Deployments', 'Applications', 'EJB Modules', 'Web Application Modules', 'Connector Modules', 'Startup & Shutdown', 'Services', 'Security', 'Domain Log Filters', and 'Tasks'. The 'Applications' folder is selected, showing 'MACore'. The main content area is titled 'SASSolutions > Deployments > Applications > MACore' and shows the 'Deploy' tab selected. Below the tabs, there is a message: 'This page allows you to view the deployment status of each module in the application. You may also choose to stop and redeploy all modules within the application using the buttons at the bottom of the page. (To configure additional deployment targets for this application, click the Targets tab.)' Below this message, there are two tables. The first table is titled 'Deployment status for EJB Modules' and has columns: Module, Target, Target Type, Deployment Status, and Status of Last Action. The second table is titled 'Deployment status for Web Application Modules' and has the same columns. At the bottom of the main content area, there are two buttons: 'Stop Application' and 'Redeploy Application'.

Module	Target	Target Type	Deployment Status	Status of Last Action
sas.analytics.crm.ma.core.jar	SASManagedServer	Server	Available	Success

Module	Target	Target Type	Deployment Status	Status of Last Action
ci51	SASManagedServer	Server	Available	Success

This will cause the jar file to be redeployed within the Weblogic server.

Notes:

*It is the **JAR** file that is being deployed not the **EAR** file. Once you run the Hot Fix setup program and extract the jar file, you're done with the ear.*

To verify the path to the deployed jar file, click on the Configuration tab.

___ Weblogic Application Server Deployed

This completes the application server deployment of the Hot Fix to Weblogic. Please now skip to section 3: Deployment Customer Intelligence Reporting War file.

2.4.2: Deployment Instructions for IBM WebSphere.

Deploying the Marketing Automation Application Server will involve uninstalling the current Marketing Automation Application, and reinstalling the ear file.

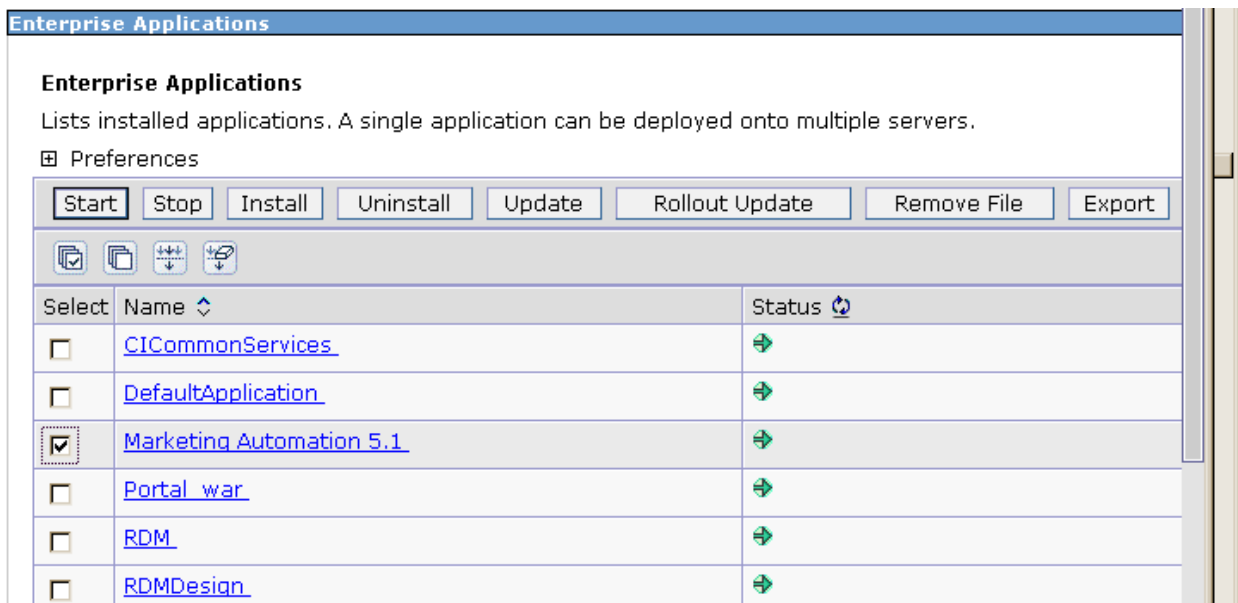
Before uninstalling the current Marketing Automation Application, make a back up copy of the current WAS.policy file. You can find the file in this directory.

```
<was_home>/profiles/AppSrv01/config/cells/<machine name>/applications/Marketing Automation 5.1.ear/deployments/Marketing Automation 5.1/META-INF
```

Where **<was_home>** is the 'home' directory location for WebSphere:

For example: **/saswork/IBM/WebSphere/AppServer**

Stop the **Marketing Automation 5.1** application from your Websphere console:



- Uninstall the **Marketing Automation 5.1** application from your Websphere console
- Save the configuration
- Next, the newly configured **Marketing Automation 5.1 application** needs to be reinstalled.
- The deployed location of the configured ear file is typically on the mid-tier machine that hosts the Marketing Automation Software. This machine should contain a directory or path named:

`<config-dir>/Lev1/web/webapps`

Where `<config-dir>` is a directory name that represents the configuration directory used to originally configure the mid-tier environment through the SAS Software Navigator.

Deploy Application to Web Server

Deploy SAS Marketing Automation Application Server using the Websphere admin console

a) *Applications->Install New Application*

- Select "Local path" radio button
- Select Browse button and navigate to the MA ear file (`<config-dir>/Lev1/web/webapps/sas.analytics.crm.ma.core.ear`)
- Choose Next
- Choose Next
- Choose Continue on the Application Security Warnings panel
- Step 1: Choose Next
- Step 2: Choose Next
- Step 3: Choose Next
- Step 4: Choose Next
- Step 5: Choose Next
- Step 6: Check the "Select" box for Web Module "SAS Customer Intelligence Servlets" then Choose Next
- Step 7: Choose Next
- Step 8: Choose Finish
- Save

b) *Applications->Enterprise Applications*

- Select Marketing Automation 5.1 link
- Classloader Mode: PARENT_LAST
- Apply/Save

c) Locate your saved copy of the WAS.policy file, and copy it back to its original location at `<was_home>/config/cells/<machine name>/applications/Marketing Automation 4.4.ear/deployments/Marketing Automation 4.4/META-INF.`

d) *Applications->Enterprise Applications*

- Select Marketing Automation 5.1 check box
- Select Start button

____ **Websphere Application Server Deployed**

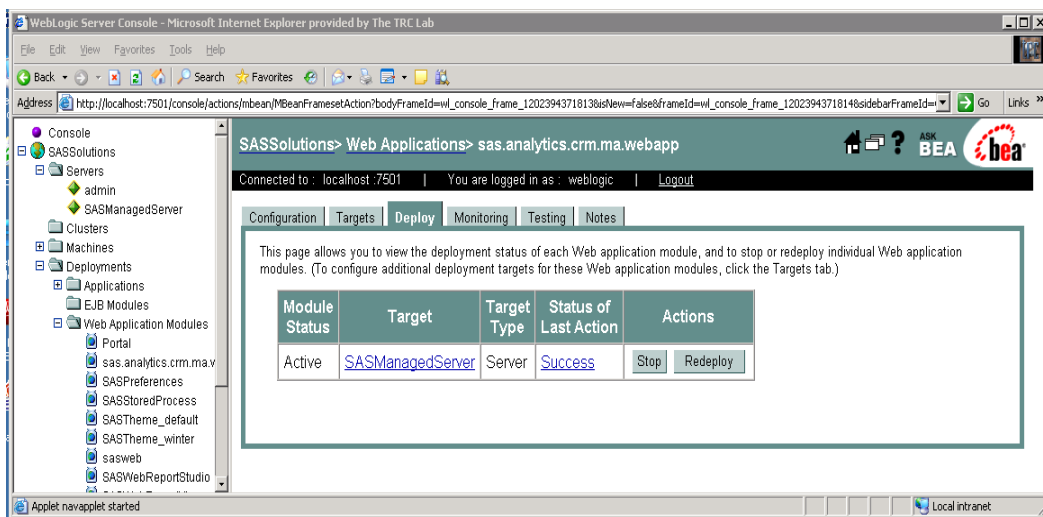
3. Deployment of the Customer Intelligence Reporting War file

If you are deploying to **BEA WebLogic**, please now follow the instructions under section 3.1.1 Deployment Instructions for BEA WebLogic.

If you are deploying to **IBM WebSphere**, please now follow the instructions under section 3.1.2: Deployment Instructions for IBM WebSphere.

3.1.1: Deployment Instructions for BEA WebLogic.

- After logging into the Weblogic console, Navigate to Deployments==> Web Application Modules ==> sas.analytics.crm.ma.csservice in the left panel. (Note that your Target name may vary. The example below used the name SASManagedServer.)
- Click the Configuration tab to verify your deployment path is the Lev1/web/webapps/directory where the updated war file now resides.
- Click the Deploy tab in order to redeploy the war file.
- Click the 'ReDeploy' button under the Actions column.



___ Weblogic Customer Intelligence Reporting war Deployed

This completes the Customer Intelligence reporting war file deployment to Weblogic. Please now skip to Section 4.

3.1.2: Deployment Instructions for IBM WebSphere.

Re-deploy SAS Customer Intelligence Reporting war components using the Websphere Admin console.

- Navigate to *Applications->Enterprise Applications*
- Select the *Stop* button to stop CICommonServices

Enterprise Applications

Lists installed applications. A single application can be deployed onto multiple servers.

☒ Preferences

Select	Name	Status
<input checked="" type="checkbox"/>	CICommonServices	✖
<input type="checkbox"/>	DefaultApplication	➔
<input type="checkbox"/>	Marketing Automation 5.1	➔
<input type="checkbox"/>	Portal_war	➔
<input type="checkbox"/>	RDM	➔

- Select the *update* button to update CICommonServices
- On the next screen, fill in the path to the sas_analytics_crm_ma_ccsservice_war file (Lev1/web/webapps)
- Type /ccs as the Context Root

Application update options

Full application

Select this option to replace the enterprise archive (*.ear) file for an installed application. The uploaded enterprise archive replaces the existing installed application.

Upload the replacement application.

Local file system

Specify path

.../SAS/ConfigDir/Lev1/web/wel

Remote file system

Specify path

Context root

Used only for standalone Web modules (.war files)

- Choose Next
- Choose Next
- Choose *Continue* on the Application Security Warnings panel
- Select *Step 4 Summary*
- Finish
- Save
- Navigate to Applications->Enterprise Applications
- Select *CICommonServices* link
- Change the Classloader Mode to *Parent_Last*
- Under the startup options section, enter *10* for the starting weight field.
- Apply and Save

- Navigate to Applications->Enterprise Applications
- Select *CICommonServices* check box
- Select *Start* button

___ **Websphere Customer Intelligence Reporting war Deployed**

4. Changes required to the Customer Intelligence Reporting deployment

If you have already installed the 51MA05 Hot Fix you should have already reconfigured the JMS messaging. If so skip this section and continue to section 5.

JMS messages enqueued on the CCommonCHTricklingInsertQueue or the CCommonRHTricklingInsertQueue have reliable persistence. Changes were made as part of the MA5105 Hot Fix to make these transient. The deployment of the CI JMS messages needs to change due to this change in persistence.

If deployed to **BEA WebLogic**, please now follow the instructions under section 4.1.1 Changes for BEA WebLogic.

If deployed to **IBM WebSphere**, please now follow the instructions under section 4.1.2: Changes for IBM WebSphere.

4.1.1: Changes for BEA Weblogic

After logging into the Weblogic console, Navigate to Services==> JMS==> Servers ==> CCommonJMSServer in the left panel. (Note that your CCommonJMSServer name may vary. The example below uses the name CCommonJMSServer.)

Double click on CCommonJMSServer and change

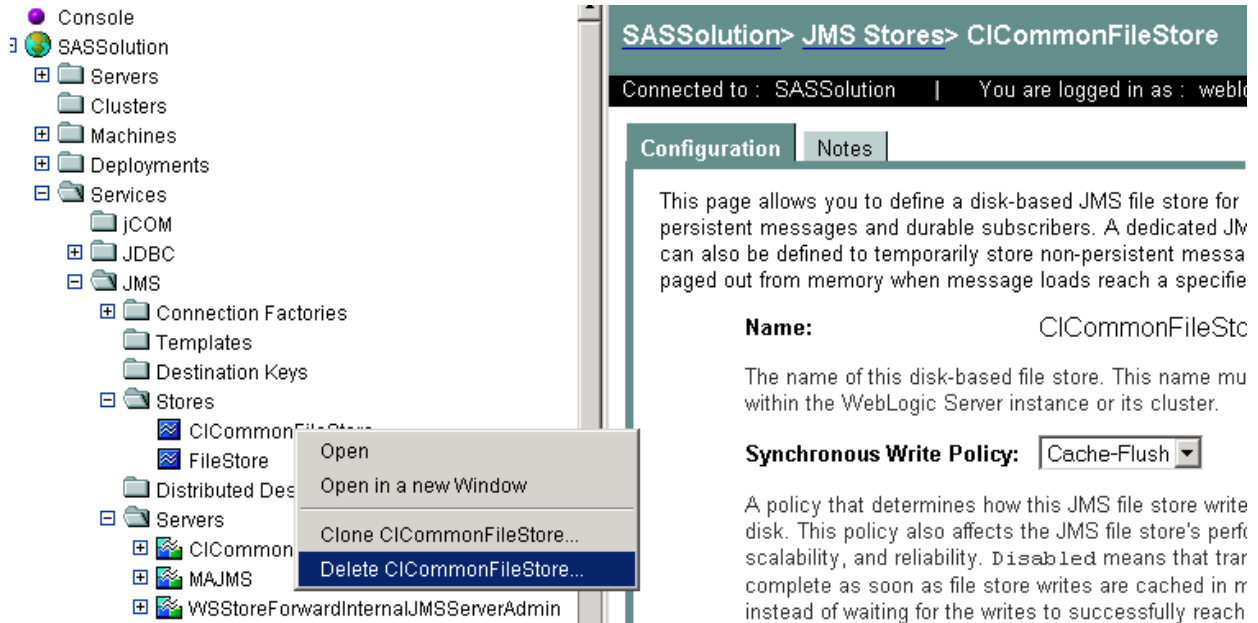
Persistent Store: to None

The screenshot displays the BEA WebLogic console interface. On the left, a tree view shows the navigation path: Console > SASSolution > JMS > Servers > CCommonJMSServer. The main area shows the configuration page for CCommonJMSServer. The 'General' tab is active, displaying the following information:

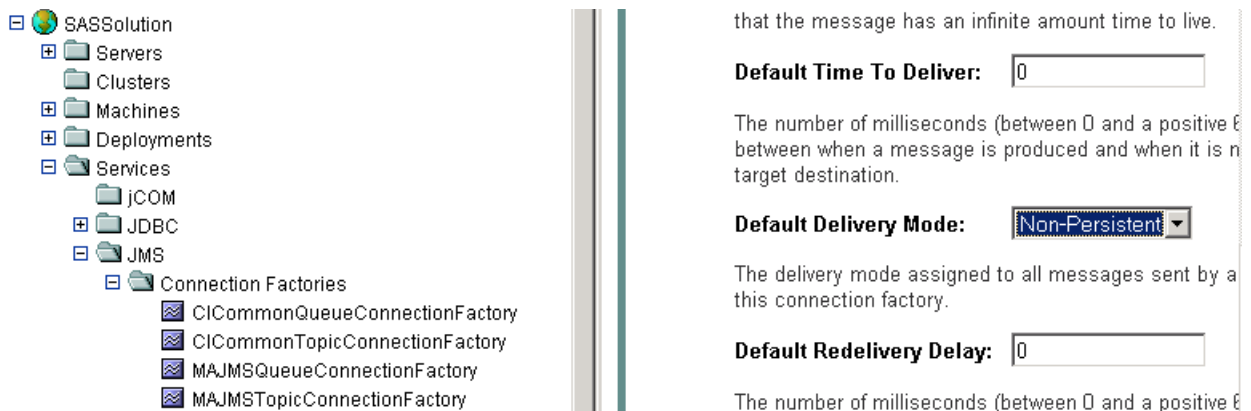
- Name:** CCommonJMSServer
- Persistent Store:** (none)

The 'Persistent Store' field is highlighted with a yellow warning icon, indicating that the selected store is not recommended. The text below the field explains that the persistent store is used as a physical repository for storing persistent message data and should not be the same as the selected paging store or any other JMS server's store.

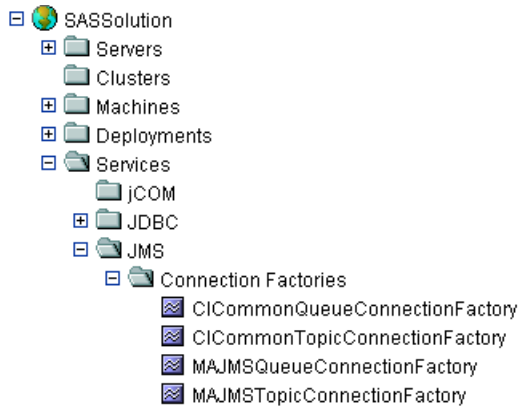
Then Navigate to Services==> JMS==> Stores ==> CCommonFileStore and right click and delete the CCommonFileStore



Then Navigate to Services==> JMS==> ConnectionFactories ==> CICommonQueueConnectionFactory and double click and Change Default Delivery Mode to NON-Persistent



Then Navigate to Services==> JMS==> ConnectionFactories ==> CICommonTopicConnectionFactory and double click and Change Default Delivery Mode to NON-Persistent



that the message has an infinite amount time to live.

Default Time To Deliver:

The number of milliseconds (between 0 and a positive € between when a message is produced and when it is n target destination.

Default Delivery Mode:

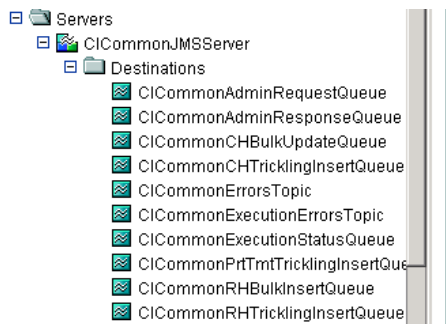
The delivery mode assigned to all messages sent by a this connection factory.

Default Redelivery Delay:

The number of milliseconds (between 0 and a positive €

Then Navigate to Services==> JMS==> Servers ==> CICCommonJMS==>Destinations ==> All Destinations shown e.g. CICCommonCHTricklingInsertQueue

Leave the Enable Store setting to default (which means it will use the JMS servers Store settings)



The JNDI name used to look up this queue within the JNDI namespace.

Replicate JNDI Name In Cluster

Specifies whether the JNDI name for this JMS queue (if specified) is replicated at cluster. If this option is not selected, then the JNDI name for the JMS queue (if s) is only visible from the server hosting this JMS queue.

Enable Store:

Specifies whether this queue supports persistent messaging by using the JMS s specified by the JMS server. `default` means that the queue uses the JMS serv persistent store (if one is defined) and supports persistent messaging. `false` m that the queue does not support persistent messaging. `true` means that the que support persistent messaging; however, if a JMS store is not defined for the JMS

You have now completed all changes needed for CICCommon on Weblogic

___ Weblogic jms changes completed

Please now skip to Section 5.

4.1.2: Changes for IBM WebSphere

After logging into the WebSphere console, Navigate to Service Integration==> Buses==> CICCOMMONBUS ==> Destinations on right of the screen. (Note that your bus name may vary. The example below uses the name CICCOMMONBUS.) You will see a list of CICCommon Queue's and Topic's of which the CICCommonCHTricklingInsertQueue, CICCommonRHTricklingInsertQueue Need to be edited

WebSphere Administrative Console

Welcome | Logout | Support | Help

- Welcome
- Guided Activities
- Servers
- Applications
- Resources
- Security
- Environment
- System administration
- Monitoring and Tuning
- Troubleshooting
- Service integration
 - Buses
 - Web services
- UDDI

Buses

Buses > CICOMMONBUS > Destinations

A bus destination is a virtual place, within a service integration bus, to which applic producers, consumers, or both to exchange messages.

Preferences

New Delete Mediate Unmediate

Select	Identifier	Type	Descri
<input type="checkbox"/>	CICommonAdminRequestQueue	Queue	
<input type="checkbox"/>	CICommonAdminResponseQueue	Queue	
<input type="checkbox"/>	CICommonCHBulkUpdateQueue	Queue	
<input type="checkbox"/>	CICommonCHTricklingInsertQueue	Queue	
<input type="checkbox"/>	CICommonErrorsTopic	Topic space	
<input type="checkbox"/>	CICommonExecutionErrorsTopic	Topic space	
<input type="checkbox"/>	CICommonExecutionStatusQueue	Queue	
<input type="checkbox"/>	CICommonPrTmtTricklingInsertQueue	Queue	
<input type="checkbox"/>	CICommonRHBulkInsertQueue	Queue	
<input type="checkbox"/>	CICommonRHTricklingInsertQueue	Queue	

Double click on [CICommonCHTricklingInsertQueue](#) and

Under **Quality of service** section ensure

- Enable Producers to over-ride default reliability - Should be checked
- Default Reliability - Reliable Non Persistent
- Maximum Reliability - Reliable Non Persistent

See example below:

- Welcome
- ⊕ Guided Activities
- ⊕ Servers
- ⊕ Applications
- ⊕ Resources
- ⊕ Security
- ⊕ Environment
- ⊕ System administration
- ⊕ Monitoring and Tuning
- ⊕ Troubleshooting
- ⊕ Service integration
 - Buses
 - ⊕ Web services
- ⊕ UDDI

[Buses](#) > [CICOMMONBUS](#) > [Destinations](#) > [CICCommonCHTricklingInsertQueue](#)

A queue for point-to-point messaging.

Configuration

General Properties

Identifier
CICCommonCHTricklingInsertQueue

UUID
EFD7223641567C75C4EE00EB

Type
Queue

Description

Mediation

Quality of Service

Enable producers to override default reliability

Default reliability
Reliable nonpersistent

Maximum reliability
Reliable nonpersistent

Message points

- [Queue points](#)
- [Mediation points](#)

Additional Properties

- [Context properties](#)

Click on Apply and then Save

Double click on CICCommonRHTrickingInsertQueue and

Under **Quality of service** section ensure

- a. Enable Producers to over-ride default reliability - Should be checked
- b. Default Reliability - Reliable Non Persistent
- c. Maximum Reliability - Reliable Non Persistent

See example below:

- Welcome
- ⊕ Guided Activities
- ⊕ Servers
- ⊕ Applications
- ⊕ Resources
- ⊕ Security
- ⊕ Environment
- ⊕ System administration
- ⊕ Monitoring and Tuning
- ⊕ Troubleshooting
- ⊕ Service integration
 - Buses
 - ⊕ Web services
- ⊕ UDDI

[Buses](#) > [CICOMMONBUS](#) > [Destinations](#) > [CICommonRHTricklingInsertQueue](#)

A queue for point-to-point messaging.

Configuration

General Properties

Identifier

UUID

Type

Description

Mediation

Quality of Service

Enable producers to override default reliability

Default reliability

Maximum reliability

Message points

- [Queue points](#)
- [Mediation point](#)

Additional Properties

- [Context properties](#)

Click on Apply and then Save

You have now completed all changes needed for CICommon on websphere

___ Websphere jms changes completed

5. Deployment of the SAS Marketing Automation Web Components Update

This section is optional for Marketing Automation customers. If Campaign Web Studio is not installed, you can skip to section 6. Campaign Management customers (which are not Marketing Automation packages) do not have this component and therefore, must skip this step.

5.1: Run the Post-configuration Ant script

The 51MA13 Hot Fix has installed a post-configuration script, emawebnport_hf.xml that will repackage sas.analytics.ma.webapp.war with the updated code. You will find emawebnport_hf.xml in the sas installation directory: /SAS/SASMarketingAutomationWeb/4.1/Config Note this directory will contain a log called emawebnport_hf.log after the execution of this script.

Use a similar ant script and methodology discussed in section 2.2 above to deploy the changes:

Example:

```
ant -f "/SAS/SASMarketingAutomationWeb/4.1/Config/emawebnport_hf.xml"
-Dconfig.dir="/SAS/MAPlan" -Dtemp.dir="/SAS/temphf"
-Dinstall.loc="/SAS/SASMarketingAutomationWeb/4.1"
```

5.2 Verify sas.analytics.crm.ma.webapp.war

The ant script will copy an updated sas.analytics.crm.ma.webapp.war into the configuration directory at Lev1/web/webapps. The script will have created a copy of the original war file suffixed with today's date.

The Marketing Automation Web Components web module needs to be redeployed in its respective application server (Weblogic or Websphere) for the changes to take effect.

5.3: Deployment of the SAS Campaign Web Studio war

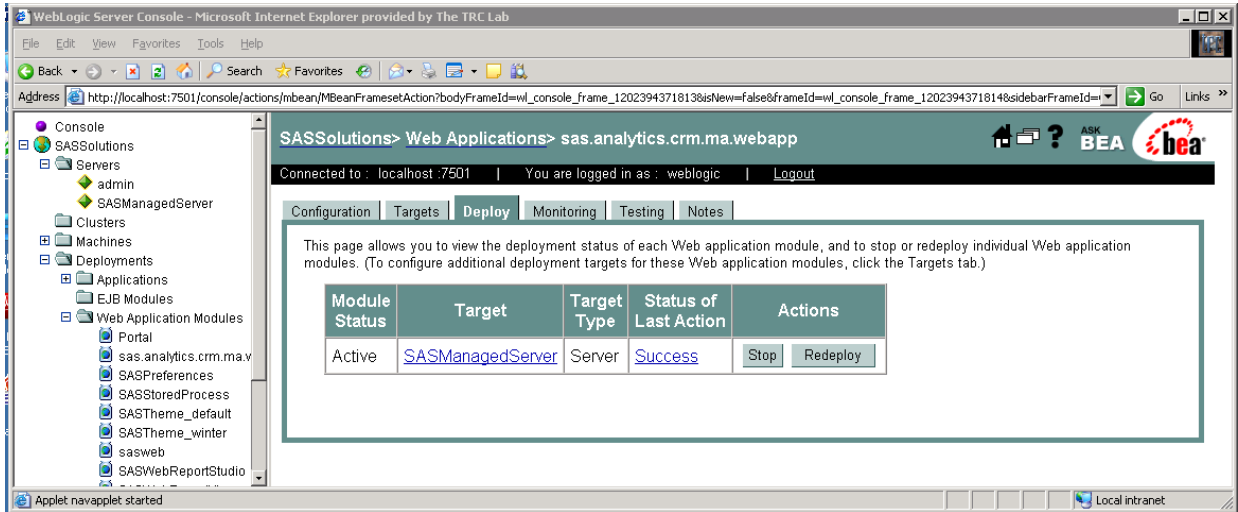
If you are deploying to **BEA WebLogic**, please now follow the instructions under section 5.3.1: Deployment Instructions for BEA WebLogic.

If you are deploying to **IBM WebSphere**, please now follow the instructions under section 5.3.2: Deployment Instructions for IBM WebSphere.

5.3.1: Deployment Instructions for BEA WebLogic.

After logging into the Weblogic console, Navigate to Deployments==> Web Application Modules ==> sas.analytics.crm.ma.webapp in the left panel. (Note that your Target name may vary. The example below used the name SASManagedServer.) Click the Configuration tab to verify your deployment path is the Lev1/web/webapps/directory where the updated war file now resides.

Click the 'ReDeploy' button under the Actions column.



Weblogic Campaign Web Studio Deployed

This completes the application server deployment of the Hot Fix to Weblogic. Please now skip to section 6.

5.3.2: Deployment Instructions for IBM WebSphere.

Re-deploy SAS Marketing Automation Web components using the Websphere Admin console.

- Navigate to *Applications->Enterprise Applications*
- Select the *Stop* button to stop *sas_analytics_crm_ma_webapp*

<input type="button" value="Start"/> <input type="button" value="Stop"/> <input type="button" value="Install"/> <input type="button" value="Uninstall"/> <input type="button" value="Update"/> <input type="button" value="Export"/> <input type="button" value="Export DDL"/>	
<input type="checkbox"/> Name	Status
<input type="checkbox"/> DefaultApplication	
<input type="checkbox"/> Marketing Automation 4.4	
<input type="checkbox"/> Portal_war	
<input type="checkbox"/> SASDoc_war	
<input type="checkbox"/> SASPreferences_war	
<input type="checkbox"/> SASStoredProcess_war	
<input type="checkbox"/> SASTheme_default_war	
<input type="checkbox"/> SASWebAnalytics_war	
<input type="checkbox"/> SASWebReportStudio_war	
<input type="checkbox"/> SCOUT	
<input type="checkbox"/> adminconsole	
<input type="checkbox"/> intApp	
<input checked="" type="checkbox"/> sas_analytics_crm_ma_webapp_war	

- Select the *update* button to update *sas_analytics_crm_ma_webapp*
- On the next screen, fill in the path to the *sas_analytics_crm_ma_webapp_war* file (Lev1/web/webapps)
- Type *ma* as the Context Root

Preparing for the application installation

Specify the EAR, WAR or JAR module to upload and install.

Path to the new application.

Local file system

Specify path

Remote file system

Specify path

Context root
 Used only for standalone Web modules (.war files)

- Choose Next
- Choose Next
- Choose *Continue* on the Application Security Warnings panel
- Step 1 Select Next
- Step 2 Select Next
- Step 3 Check the box for Web Module “sas.analytics.crm.ma.webapp.war” then Select Next
- *Step 4 Summary*, Select Finish
- Save

___ Websphere Campaign Web Studio Deployed

6. Installing 51MA13 Hot Fix on the Server Tier

The 51MA13 Hot Fix contains files for the Marketing Automation Server Tier.

The 51ma13_xxx directory under the directory containing the Hot Fix tar file will contain a file: mktautox6.tar (where x is the appropriate suffix for the Unix platform. A for AIX etc.)

With the exception of HP Itanium, where the suffix will be 'hx', example below:

Ex: mktautohx.tar

Copy this file to the <SAS Install Dir>/SAS_9.1 then cd to that directory

Unarchive the file using tar -xvf mktautox6.tar. This will replace the necessary stored process and SAS macros with the Hot Fix versions

You can verify the updated files as follows

<SAS Install Dir>/SAS_9.1/cmacros/ma/sasmacr.sas7bcac	new date of Jan xx 2010
<SAS Install Dir>/SAS_9.1/sasstp/ma/ma_cdi_update_ch.sas	new date of Jan xx 2010
<SAS Install Dir>/SAS_9.1/sasstp/ma/ma_cdi_update_rh.sas	new date of Jan xx 2010
<SAS Install Dir>/SAS_9.1/misc/ma/mapublish.map	new date of Jan xx 2010

<SAS Install Dir>/SAS_9.1/misc/ma/mapublish.map needs to be copied to the MAMisc folder. To know the location of this folder open the file <Config Dir>/Lev1/SASMain/appserver_autoexec.sas. Copy the mapublish.map to the path specified in the line : "libname MAMisc '..\MAMisc';" (default location: <Config Dir>/Lev1/SASMain/Data/MAMisc).

___ SAS Compute Server updated

7. Common Data Model DDL and Alter Scripts

Released Version DDL and Alter Scripts

SAS Customer Intelligence is delivered with Data Description Language (DDL) scripts to be used at installation time to create the SAS Customer Intelligence reporting Common Data Model on the underlying database. (<SAS Install Dir>/SAS_9.1/misc/ma/ciddlxxx.sas)

The scripts that accompany the 5.1 release of Customer Intelligence do not include any changes introduced by subsequent Hot Fixes. These updates have been provided through 'alter' DDL scripts that accompany the Hot Fixes.

New customer sites that have not configured the Common Data Model should refer to the product documentation on how to configure the common data model for the first time. Then create it before running any of the alter DDL scripts. The alter scripts must then be applied in sequence following successful creation and configuration of the Common Data Model tables.

If you already have Hot Fixes applied then please skip to the Hot Fix after the latest you have installed. All DDL scripts are installed to <SAS Install Dir>/SAS_9.1/misc/ma

51MA01 Hot Fix

The Customer Intelligence Hot Fix (51MA01) introduced alter scripts to modify the key of the CI_RESPONSE_HISTORY table and to add a new column to the CI_CAMPAIGN table: CAMPAIGN_FOLDER_TXT. These scripts are designed to alter a Customer Intelligence 5.1 Common Data Model that has already been installed using the DDL that was shipped with the Customer Intelligence 5.1 release. The following files are provided by the service-pack in the <SAS Install Dir>/SAS_9.1/misc/ma location

	File	Supported DB
1	cia01ora.sas	Oracle
2	cia01db2.sas	DB2
3	cia01trd.sas	Teradata
4	cia01sqs.sas	SQL Server
5	cia01spd.sas	SPDS

Appendix A: of this document provides specific guidance on how to apply the 51MA01 alter scripts.

51MA02 Hot Fix

The Customer Intelligence Hot Fix (51MA02) introduced a new DDL script for support of the Netezza database platform. The script comprised a full DDL that can be used to create the physical data structures for the Common Data Model tables on Netezza. The script included changes and updates that were introduced in 51MA01 so no additional alter script is required for Netezza. The file is named as follows:

	File	Supported DB
6	ciddlntz.sas	Netezza

If you have already installed the 51MA01 Hot Fix and are not using Netezza as your database then this
SAS Marketing Automation hot fix 51MA13

script need not be run

51MA05 Hot Fix

The 51MA13 Hot Fix contains a second set of alter scripts one for each supported platform as well as introducing a new DDL script for support of the Neoview database platform and an update to the Netezza DDL.

The alter scripts provide updates to add five new budget columns to the CI_COMMUNICATION table.

Again, these scripts are designed to alter a Customer Intelligence 5.1 Common Data Model that has already been installed using the DDL that was shipped with the Customer Intelligence 5.1. These scripts should only be applied after the scripts from 51MA01 have been applied. The second set of alter script files are named as follows:

	File	Supported DB
1	cia02ora.sas	Oracle
2	cia02db2.sas	DB2
3	cia02trd.sas	Teradata
4	cia02sqs.sas	SQL Server
5	cia02spd.sas	SPDS

The full Netezza DDL discussed under the 51MA02 Hot Fix has been superseded the new versions incorporates changes needed in 51MA13

A new DDL was added to support Neoview.

Customers who wish to use the Common Data Model with either Netezza or Neoview should refer to the product documentation on how to configure the common data model for the first time and apply these scripts accordingly. No alter scripts are provided for these two database platforms.

The Netezza and Neoview DDL scripts are named as follows:

	File	Supported DB
6	ciddlntz.sas	Netezza
7	ciddlneo.sas	Neoview

Appendix A: Instructions for applying changes to the Common Data Model

The 51MA13 Hot Fix has supplied Alter DDL scripts for the Customer Intelligence 5.1 Common Data Model. New customer sites that have not configured the Common Data Model should refer to the product documentation on how to configure the common data model for the first time before running the Alter DDL scripts.

The Hot Fix delivers Alter table DDL to modify the key of the CI_RESPONSE_HISTORY table and to add a new column to the CI_CAMPAIGN table: CAMPAIGN_FOLDER_TXT. These Alter Table DDLs will alter a Customer Intelligence 5.1 Common Data Model that has already been installed using the DDL that was shipped with the Customer Intelligence 5.1 product. The following files are downloaded with the Hot Fix.

Oracle DDL: cia01ora
DB2 DDL: cia01db2
SQL Server DDL: cia01sqs
SPD Server DDL: cia01spd
Teradata DDL: cia01trd

PLEASE NOTE: Prior to running any Alter table DDL, you must apply an update to the data in your CI_RESPONSE_HISTORY table(s). The primary key is being changed to add two columns: TREATMENT_SK and CELL_PACKAGE_SK. TREATMENT_SK was delivered in the original DDL script with a setting of "NULL". TREATMENT_SK will now be set to "NOT NULL" to comply with the requirements of being a member of the primary key. All rows of data that contain a null value in the TREATMENT_SK column must be updated to a "NOT NULL" value (-1).

Sample code to update TREATMENT_SK in the CI_RESPONSE_HISTORY table:

```
PROC SQL;  
UPDATE <YOUR CI_RESPONSE_HISTORY TABLE>  
  SET TREATMENT_SK = -1  
  WHERE TREATMENT_SK IS NULL;  
QUIT;
```

Overall code changes required before executing the DDL scripts:

1. If the CI_RESPONSE_HISTORY table was renamed when initially created, to allow for multiple subjects or business contexts, rename the table specified in the alter table statements to match the table created by your install.
2. If the CONSTRAINT names were renamed when initially created to allow for multiple subjects or business contexts, rename the constraint names in the alter table statements to match the constraints created by your install.
3. Modify the SUBJECT_ID column in the list of primary key columns in the execute statement, to match the modifications that were made when the table was initially created. The SUBJECT_ID column was a placeholder column name in the original CI 5.1 CI_RESPONSE_HISTORY DDL and should have been modified with key columns to a customer specific subject.
4. If multiple CI_RESPONSE_HISTORY tables were created to accommodate multiple subjects and business contexts, copy and repeat all EXECUTE statements that contain the alter table code. Make the changes listed in 1, 2 and 3 above to each set of alter table code for each Response History table that you have uniquely created in your schema.

*** This completes the changes to CI_RESPONSE_HISTORY ***

Install specifics for Teradata customers:

Since the change to the CI_RESPONSE_HISTORY table requires a change to the primary key of the table, the above alter table instructions do not apply to Teradata. Teradata will not allow a primary key to be dropped and dropping the key is necessary to accomplish this modification to the table.

Prior to running the supplied Teradata code, perform the following tasks:

- If data exists in your CI_RESPONSE_HISTORY table, save the data to another table. This Hot Fix requires deletion of the CI_RESPONSE_HISTORY table, so saving the data is essential.
- Drop the existing CI_RESPONSE_HISTORY table.

Make the following changes to the supplied code for the CI_RESPONSE_HISTORY table:

1. If the CI_RESPONSE_HISTORY table was renamed when initially created to allow for multiple subjects or business contexts, rename the table specified in the create table statements to match the table created by your install.
2. If the primary key constraint name was renamed when initially created to allow for multiple subjects or business contexts, rename the constraint name in the create table code statements to match the constraints created by your install.
3. Modify the SUBJECT_ID column in the list of primary key columns in the execute statement, to match the modifications that were made when the table was initially created. The SUBJECT_ID column was a placeholder column name in the original CI 5.1 CI_RESPONSE_HISTORY DDL and should have been modified with key columns to a customer specific subject.
4. If multiple CI_RESPONSE_HISTORY tables were created to accommodate multiple subjects and business contexts, copy and repeat all EXECUTE statements that contain the create table code. Make the changes listed in 1, 2 and 3 above to each set of create table code for each Response History table that you have uniquely created in your schema.
5. Reload the saved data from your existing CI_RESPONSE_HISTORY table to the newly created CI_RESPONSE_HISTORY table.

*** This completes the changes to the CI_RESPONSE_HISTORY table. ***

Install specifics for DB2 customers:

The DB2 Alter table code has to be run in two passes. First make the changes listed above in the section titled: **Overall code changes required before executing the DDL scripts**. Next, after the primary key is dropped and the TREATMENT_SK column in the CI_RESPONSE_HISTORY table has been set to NULL in the first section of SQL code, you must have your DBA *REORG* the CI_RESPONSE_HISTORY table. This is a DB2 requirement and you cannot continue until this is done!

After your DBA has run the *REORG* on the CI_RESPONSE_HISTORY table, you must un-comment the final set of Proc SQL code statements provided in the last section of the DDL script and run only this SQL code to create the new primary key on the CI_RESPONSE_HISTORY table. This completes the changes to your DB2 CI_RESPONSE_HISTORY table.