



What does SAS Web Report Studio do?

SAS Web Report Studio provides fast, simple access to query and reporting capabilities on the Web.

Why is SAS Web Report Studio important?

SAS Web Report Studio, empowers business users and decision makers across the enterprise with self-sufficient access to consistent, accurate data and the predictive power of SAS analytics, while minimizing administrative overhead, maximizing resources and freeing IT staff to focus on strategic projects.

For whom is SAS Web Report Studio designed?

SAS Web Report Studio is designed to meet the specific needs and skill levels of non-technical business users throughout an organization.

SAS® Web Report Studio

Web-based query and reporting designed specifically for business users

With increasing numbers of non-technical users demanding fast access to intelligence, deployment of desktop query and reporting tools to geographically dispersed users is often a costly and time-consuming process. On top of that, many existing tools and databases are too difficult for most business users to learn and use quickly. As a result, IT departments are inundated with requests for reports and information and cannot keep up with the increasing demand.

SAS Web Report Studio empowers business users and decision makers across the enterprise with self-sufficient access to consistent data and the predictive power of SAS analytics for more accurate decisions. At the same time, it enables IT departments to minimize administrative overhead, maximize resources and free IT staff to focus on more strategic issues.

As data volumes rise and business users demand accurate information they can use, IT must find a way to provide query and reporting capabilities to increasing numbers of non-technical users in a cost-effective manner.

SAS Web Report Studio is an intuitive query and reporting application specifically designed for business users who want a fast, simple way to view, author and share reports on the Web. Based on open standards with multiple platform support, SAS Web Report Studio enables users at all levels to take advantage of powerful analytics and reporting from their Web browsers. It provides a zero-footprint browser interface that is server-based as well as centrally deployed and managed.

Key benefits

- **Empower business users with self-service access to query and reporting capabilities.** SAS Web Report Studio empowers users across organizations with easy access to reports and the ability to answer questions in an evolving business environment. An intuitive interface enables non-technical users to create their own queries and generate their own reports. In addition, they can receive powerful, on-demand analytical results without having to understand or create sophisticated statistical models.
- **Raise the business value of IT and corporate data managed by IT.** SAS Web Report Studio provides non-technical users across the enterprise with fast, easy self-service access to corporate data. The risk of inconsistent results associated with direct access to corporate databases is eliminated and business managers get reliable information they can trust.
- **Minimize training and support costs.** SAS Web Report Studio is so simple to use that novice users are quickly self-sufficient. Minimal IT support is required and there is no need for extensive user training. A zero-footprint installation simplifies desktop deployment, reduces administrative overhead and minimizes IT costs while providing geographically dispersed users with access to centrally deployed information. This relieves the backlog of IT information requests and frees IT staff to concentrate on more strategic projects.

Product overview

SAS Web Report Studio is a Web application that anyone can use to view, interact, author and distribute both public and private reports. Business users can interactively get the information they need without knowledge of programming. In addition, SAS predictive analytical results can be consumed by business professionals across the enterprise via their Web browsers.

Entirely server-based and centrally deployed and managed, SAS Web Report Studio provides a zero-footprint browser interface based on J2EE technology. It is built upon a combination of open standards, in-

cluding HTML, XML, WebDAV, JDBC and Servlet/JSP technology. The server-based application provides centralized administration and configuration to simplify maintenance, reduce configuration time and maximize IT resource utilization. Multiple server platforms, including mainframes, are supported to leverage existing IT infrastructures.

SAS Web Report Studio simplifies data selection for non-technical users by presenting data attributes in everyday business terminology. This business view of data, called an information map, hides all technical complexity of databases from users. Information maps provide IT with centralized control and

administration, while enforcing the consistent use of corporate data by everyone in the organization.

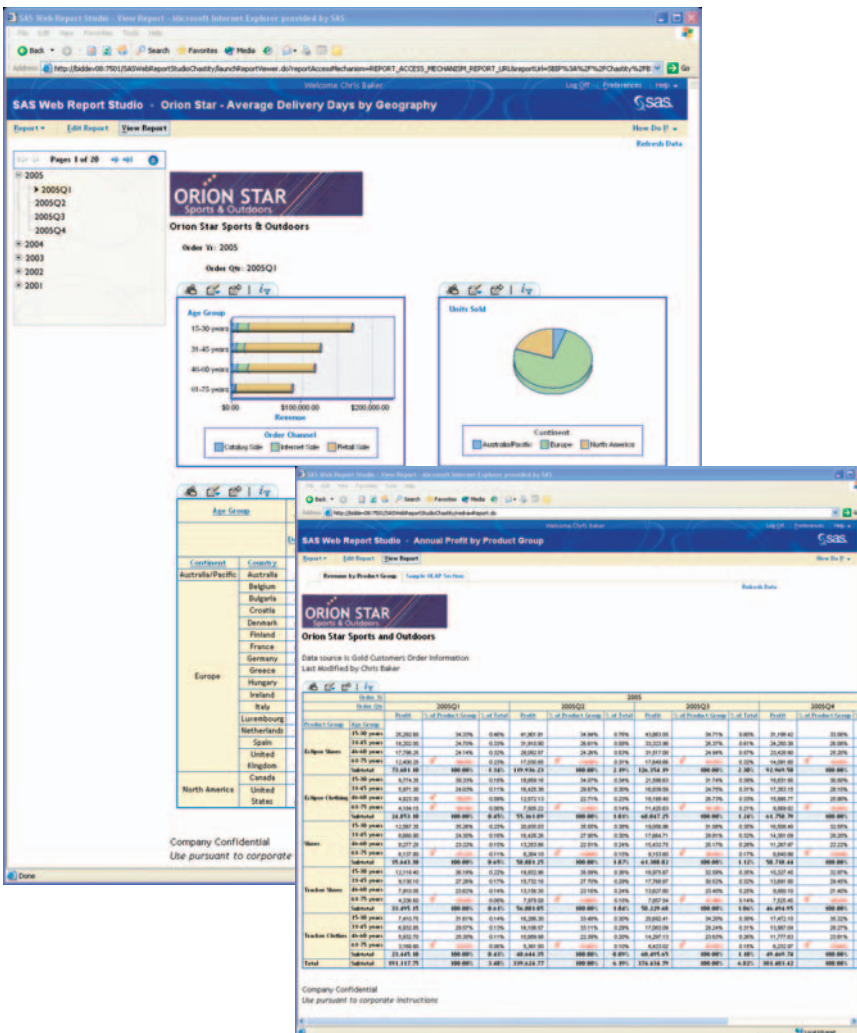
As an integral part of SAS Enterprise BI Server, SAS Web Report Studio leverages the analytical power of SAS via common metadata and SAS Stored Processes to disseminate SAS analytical intelligence to a wide range of users.

Web-based query and reporting

SAS Web Report Studio provides report-building capabilities that match user skill levels to speed the creation of reports. An intuitive, step-by-step Report Wizard enables novice or casual users to quickly create and distribute basic queries and reports based on either relational or multidimensional data sources. As users' needs evolve, more sophisticated layout and query capabilities are available, including the ability to define custom calculations and complex filter combinations and combine data sources, multiple queries and SAS analytical results into a single document. A gallery of predefined layout choices expedites the report creation process, and an extensive range of advanced report components enables users to create and interact with reports from their Web browsers.

Organize reports and search for information quickly

SAS Web Report Studio's environment allows business users the flexibility to create folders and subfolders where reports can be organized. Reports can be shared with others or kept in private folders based on security settings. Existing reports can be edited, moved, copied, deleted or renamed. Information consumers can quickly search for relevant reports by name, description, keywords or dates last saved.



SAS Web Report Studio provides a flexible ad hoc query and reporting tool that makes it easy for business users to get the information they need.

Print, export and distribute reports

When users want to print or save a PDF version of their report, they can generate a PDF and preview it in Adobe Acrobat Reader, overcoming printing limitations on the Web. Familiar printing options provide control over page orientation, paper size, margins and page range. Graphs and tables can be exported to Microsoft Excel or as tab-delimited text. SAS Web Report Studio includes report bursting capabilities that enable easy distribution to a broad audience. Bursting allows users to create a single report, create guidelines on who has access to what content and then distribute the report based on assigned groupings. This saves time and ensures consistency because rather than developing (or modifying) reports for each portion of data, you can create and maintain a single report and ensure that recipients receive only the information that is relevant to them.

Deploy and manage easily

As a true zero-footprint Web application, SAS Web Report Studio is easy to deploy and manage. It is built using open standards, such as J2EE, which facilitate platform and application server independence as well as integration with existing systems and data. Security, configuration and support issues commonly associated with large deployments of desktop tools or Web applications are eliminated. SAS Web Report Studio leverages the common SAS Metadata Architecture to reduce administration tasks and the centralized SAS Management Console to grant access to reports. It also uses SAS Stored Processes to provide analytical power and SAS information maps to isolate business users from complex data structures and ensure consistent use of enterprise data.

Key Features

Report management

- Organize reports in hierarchical folders for easy navigation and consumption:
 - Display a list of SAS reports and SAS stored processes, based on report security settings.
 - Optionally show long report descriptions to facilitate report selection.
 - Edit, move, copy, delete and rename existing reports and folders.
 - Optionally provide a report description and/or keywords to facilitate fast searches.
 - Sort list of reports by report attributes, such as name, author or dates.
 - Search for reports by name, description, keywords or dates last saved.
 - Store reports either in private folders or in shared public folders.
- Manage reports updates in the most flexible way:
 - Save report so that it automatically refreshes upon opening.
 - Organize reports in hierarchical folders for easy navigation and consumption.
 - Embed results for quick viewing upon opening with the option to manually refresh.
 - Set report as read-only (snapshot) to prevent overwriting.
 - Schedule periodic report updates using the latest data.
- Generate reports using SAS DATA step programming and SAS Output Delivery System.

Report interaction

- Filter and rank table and graph data.
- Move data items left or right.
- Rotate an entire crosstab.
- Perform single or compound sorting on displayed data items.
- Add totals and/or subtotals; calculate percent of total and subtotals.
- Navigate quickly between report sections and group levels with a clickable table of contents.
- Perform OLAP-specific interactions:
 - Drill and expand tables and graphs.
 - Support for ragged and unbalanced hierarchies.
 - Pivot individual crosstab dimensions.
 - Switch dimensions and measures with Data Selection box.
 - Synchronize report components to display a common drill state or have them remain independent.
- Print reports using familiar optional settings such as margins, page orientation, paper size and group value ranges.
- Export formatted tables and graphs, or simply their data, to Excel.
- Prompt dialog to set report parameters.
- Save modifications to an existing report or as a new report.
- Hide data items.

Role-based report authoring and distribution

- Create a quick view on data that lets you select a data source and display the default view in one simple step.
- Create simple reports. The Report Wizard guides novice and casual users through report creation:
 - Choose data items needed from an information map.
 - Define filters, groupings, sorting and formatting rules.
 - Define report layout. Add table, graph, table of contents, footers and headers.
 - Preview report.
- Create more comprehensive reports with powerful layout capabilities for experienced report authors and specialized reports:
 - Choose from a gallery of common predefined layouts and custom templates for a quick start, or begin from a blank page and add tables, graphs and text manually.
 - Define multiple report sections with data from multiple data sources.
 - Precisely position and size graphs, tables, text, images, etc., with advanced layout capabilities.
 - Use advanced formatting for all graphs (size, style, decoration, data, legend placement, etc.).
 - Use advanced formatting for text (font, size, color, alignment, etc.).
 - Use dynamic text insertion to show information such as report creation date and prompt values as appropriate.

SAS® Web Report Studio

Technical requirements

Client environment

- Windows (x86-32): Windows 2000 Professional, Windows XP Professional, Windows NT 4 Server, Windows Server 2003.

Server environment

- SAS Web Report Studio must connect to an environment running SAS BI Server or SAS Enterprise BI Server.
- Please refer to the SAS Enterprise BI Server Fact Sheet for a complete list of supported hardware systems, including Windows, UNIX, Linux and mainframe.

Web tier

- BEA WebLogic (AIX, HP/UX Itanium, Solaris, Windows 2000 Server, Windows Server 2003).
- IBM WebSphere (AIX, Windows 2000 Server, Windows Server 2003).
- Apache Jakarta Tomcat (AIX, HP/UX Itanium, Solaris, Windows 2000 Server, Windows Server 2003).

Required/optional software

- SAS Web Report Studio is delivered as a component of SAS BI Server and SAS Enterprise BI Server. The Apache Jakarta Tomcat Servlet/JSP container is included with SAS BI Server and SAS Enterprise BI Server. Other supported application servers must be licensed directly from the vendor.
- SAS OLAP Server is recommended to support multidimensional data, and must be licensed separately if you are running SAS BI Server (SAS OLAP Server is included with SAS Enterprise BI Server).

Key Features (continued)

- Define custom calculations, filters and aggregations.
- Link reports:
 - Add hypertext links on text, tables, graphs and group breaks.
 - Add links to other reports or Web pages.
- Use conditional highlighting to define exceptions:
 - Use conditional highlighting on tables and graphs.
 - Change text format and background.
 - Add or replace with image or text.
- Use a variety of charts: bar/3D bar, pie/3D, line, scatter and more.
- Select report data from information maps using familiar business terms.
- Define custom calculations, filters and aggregations.
- Share reports with large and diverse audiences through report bursting capabilities.
- Offline users can view reports via e-mail.
- Save predefined reports and information with report archiving.

Data access

- Its unmatched capabilities access data from virtually any data source:
 - Relational databases such as Oracle, DB2, SQL Server and Teradata.
 - ERP systems such as SAP R/3, SAP BW, PeopleSoft, Siebel or Oracle.
 - SAS OLAP Server multidimensional data.
- It supports open standards such as SQL, MDX, ODBC or OLE DB for data access.
- Reports can contain and join data from multiple different sources.
- Reports can be based on real-time analytical processes and be based on the full analytical power of the SAS server.
- Data access, query and analytical processes can run on any of the major platforms such as Linux, AIX, HP/UX, z/OS, Windows, Solaris, Tru64, OpenVMS.

Administration and manageability

- True zero-footprint Web application (only JavaScript and HTML sent to the client) that is easy to deploy and manage.
- Centralized interface so IT can administrate and set up reporting environment via one interface, the SAS Management Console:
 - Set security on individual reports, report folders, etc.
 - Define users and grant access to reports.
 - Define authentication infrastructure (host, LDAP or Active Directory).
- HTTP/HTTPS support for standard and encrypted HTML delivery.
- 128-bit encryption (SSL) to send information securely.
- Report and Application branding.
- Role support enables IT to define user roles. Depending on their role, users will see different feature sets.
- Open architecture based on standard J2EE framework. Platform and application are server-independent.

Internationalization

- Interface available in 12 languages: Chinese (Simplified), Danish, English, French (Standard), German, Italian, Japanese, Korean, Polish, Russian, Spanish and Swedish.



World Headquarters
and SAS Americas
SAS Campus Drive
Cary, NC 27513 USA
Tel: (1) 919 677 8000
Fax: (1) 919 677 4444
U.S. & Canada sales:
(1) 800 727 0025

SAS International
PO Box 10 53 40
Neuenheimer Landsr. 28-30
D-69043 Heidelberg, Germany
Tel: (49) 6221 4160
Fax: (49) 6221 474850

www.sas.com