

FanSAStic

Text Searcher For SAS Programmers

Rob Ashmore, Bupa Australia

Why Search for Text in your SAS programs?

- Find examples of procs, functions, formats, techniques
- Identify programs referencing specific datasets, macros, programs etc

What tools do we use for search?

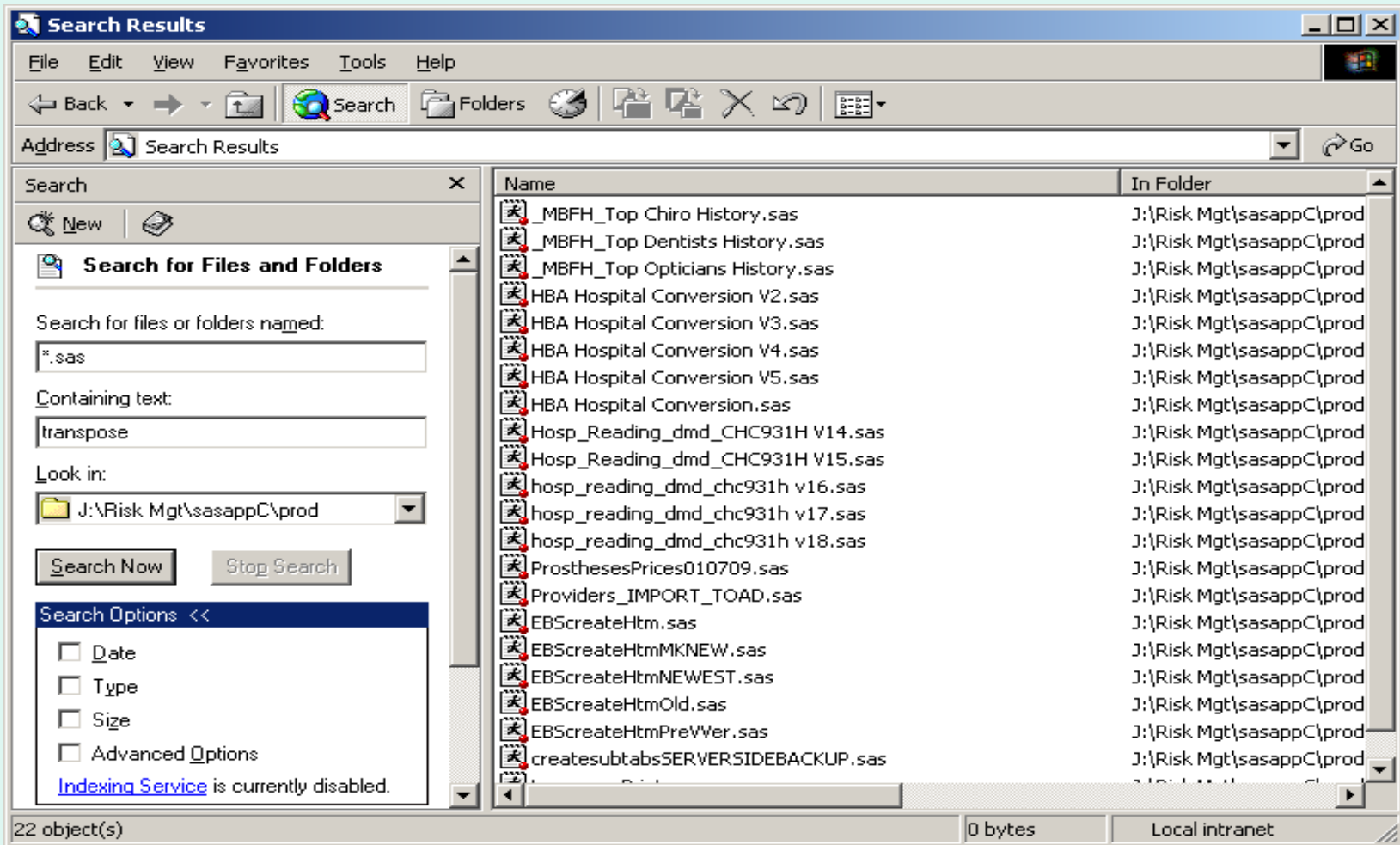
- SAS doesn't supply one
- Can't use Google.....



- Usually we revert to “Search” in Windows Explorer



Windows Explorer Search Results



Could Do Better !



The problem with Explorer Search

- Shows context?
- Search Term Qualification?
- Highlight Found Strings?
- Opens each file automatically?
- Keeps track of results?
- Search SAS catalogs (source / scl)?

NO

NO

NO

NO

NO

NO



SAS has the tools to DIY

SAS/AF

- SCL – like Base SAS and Javascript
- Versatile - SAS functions, SCL lists
- Interfaces with SAS seamlessly

F ind

A N d

S how

A

S earch

T erm

I n

C ontext

FanSASTic Screen

The screenshot shows the CdevGenIP application window with the following components and annotations:

- Search Term:** A text input field with a "Clear" button. A red box highlights the text "Find And Show A Search Term In Context". A yellow arrow points to this field with the label "Search String".
- Case Sensitive / Multiple Search Terms:** Two checkboxes. A yellow arrow points to the "Multiple Search Terms" checkbox with the label "Secondary Search String".
- Search Using Secondary Qualifier Filtering:** A section containing radio buttons for "Must ALSO Include" and "Must NOT Include", a "Secondary Qualifier Filter" dropdown, and a "Within N Lines of Search Term" input field. A yellow arrow points to the "Must NOT Include" radio button with the label "Secondary Search String".
- Filerref / Folder to search:** A text input field with a dropdown arrow and a browse button. A yellow arrow points to this field with the label "Locations To Search".
- Search in SAS Program Files / Search in SAS Catalog Entries:** Two radio buttons. A green box highlights the "Search" button. A yellow arrow points to the "Search" button with the label "Locations To Search".
- Lib to Search / Catalogs to Search:** Two lists of libraries with "Clear Sel" and "Sel All" buttons. A yellow arrow points to the "Search" button with the label "Locations To Search".
- Append to Dataset:** A checkbox and a text input field.
- Search Term Found in: / Line #:** A table with two columns. A yellow arrow points to the "Line #" column with the label "Listings Of Results".
- Details to Log:** A button at the bottom left of the results section.

The taskbar at the bottom shows the following open applications: Output - (Untitled), Editor - Untitled1, Explorer, and BUILD: DISPLAY DAFU... The system tray shows the path c:\program files\sas\sas 9.1.

What's under the hood?



Slightly Technical!

Make LIST of all entries which need to be searched

Cycle through each entry. FILLIST SCL Function puts each line into SCL list

Search EACH line for Search Term AND for Secondary Qualifier using INDEX function. Collect Results of Search in a LIST.

Apply any Conditional Processing (Secondary Qualifiers, Must Also/Must Not, Proximity Checking)

Collate and Present User with results

Business Scenario - A

- A generic utility ('valueLookup.frame') is called from multiple programs.
- We wish to make some changes to 'valueLookup.frame'.
- In order to test the impact of the changes we must identify which programs use this program.



Business Scenario - A

- A generic utility ('valueLookup.frame') is called from multiple programs.
- We wish to make some changes to 'valueLookup.frame'.
- In order to test the impact of the changes we must identify which programs use this program.

The image shows a screenshot of the SAS Search utility dialog box. The dialog is titled "Search Term" and contains the following elements:

- Search Term:** A text box containing "valueLookup.frame" and a "Clear" button.
- Options:** Two checkboxes: "Case Sensitive" (unchecked) and "Multiple Search Terms" (unchecked).
- Secondary Qualifier Filtering:** A checkbox "Search Using Secondary Qualifier Filtering" (unchecked), two radio buttons "Must ALSO Include" (selected) and "Must NOT Include", and a "Secondary Qualifier Filter" dropdown menu.
- Search Range:** A text box containing "0" and the label "Within N Lines of Search Term".
- Search Location:** A "Fileref / Folder to search" dropdown menu, a "Search" button (highlighted with a green border), and two radio buttons: "Search in SAS Program Files" (unchecked) and "Search in SAS Catalog Entries" (checked).
- Search Scope:** Two lists: "Lib to Search" (containing Afcode, Afutil, Sashelp, Sasuser) and "Catalogs to Search" (containing Afcode.Backuparchive, Afcode.Discappcat, Afcode.Mgtreppcat, Afcode.Xrawappcat). There are "Clear Sel" and "Sel All" buttons to the right.

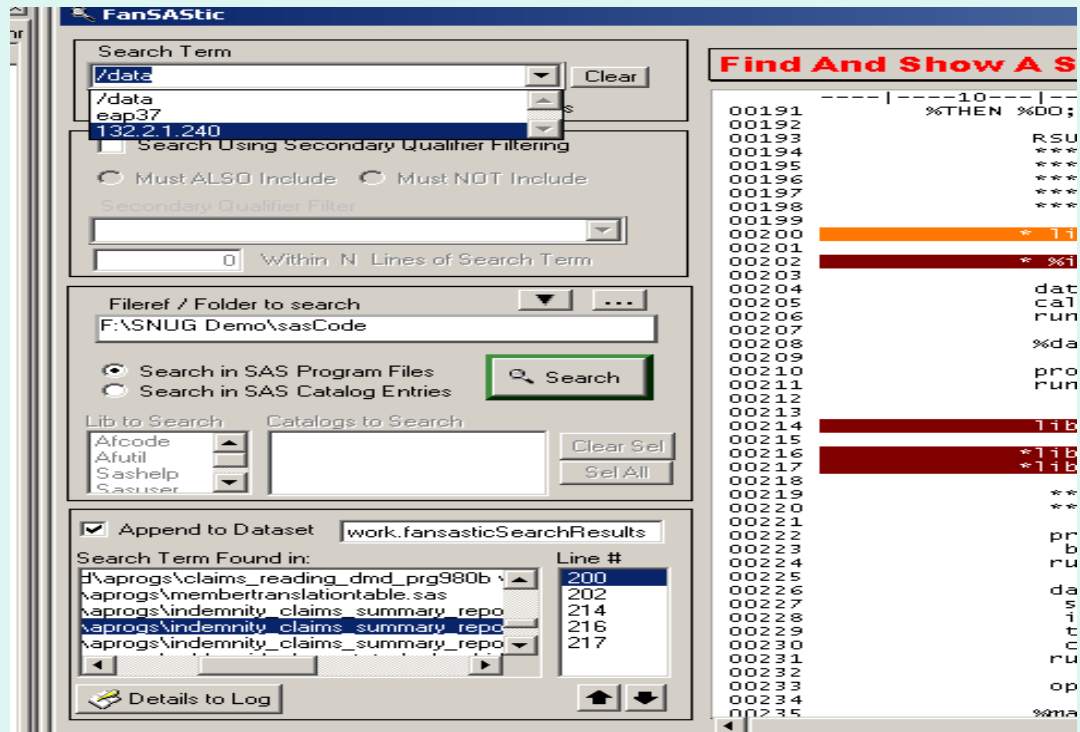
Business Scenario - B

- SAS is Moving from a Unix Server environment to Windows.
- Identify code which needs changing to reflect the new Windows environment
- Look for tell-tale Unix text strings
 - IP Address = 132.2.1.240
 - Hostname = EAP37
 - Disk Assigns = /data



Business Scenario - B

- SAS is Moving from a Unix Server environment to Windows.
- Identify code which needs changing to reflect the new Windows environment
- Look for tell-tale Unix text strings
 - IP Address = 132.2.1.240
 - Hostname = EAP37
 - Disk Assigns = /data



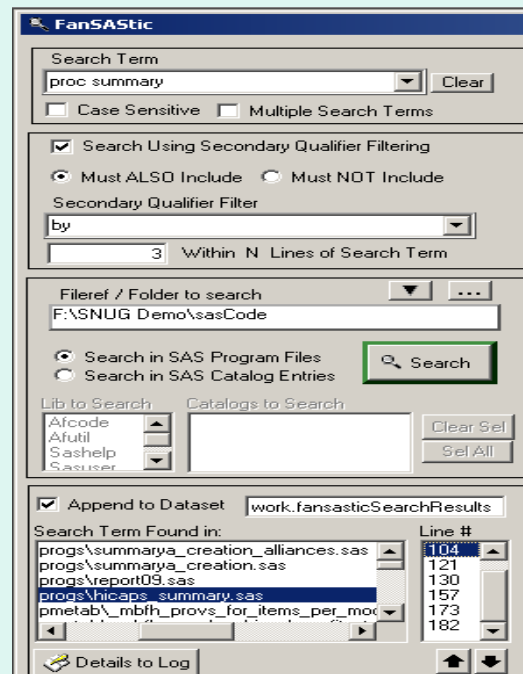
Business Scenario - C

- Programmer wants to see examples of Proc Summary Using a BY statement
- Search for “proc summary” - too many results
- Search for “by” – too many results “by” is used in many other SAS procedures and datasteps









Business Scenario - C

- Programmer wants to see examples of Proc Summary Using a BY statement
- Search for “proc summary” - too many results
- Search for “by” – too many results “by” is used in many other SAS procedures and datasteps



FanSASStic - Advantages

- Shows context? 
- Search Term Qualification? 
- Highlight Found Strings? 
- Opens each file automatically? 
- Keeps track of results? 
- Search SAS catalogs (source / scl)? 

Adding to SAS Display Manager

Put in a sas library you assign each time

Add to your toolbar. Command is:

`afa c=yourlib.devtools.fansastic.frame`