

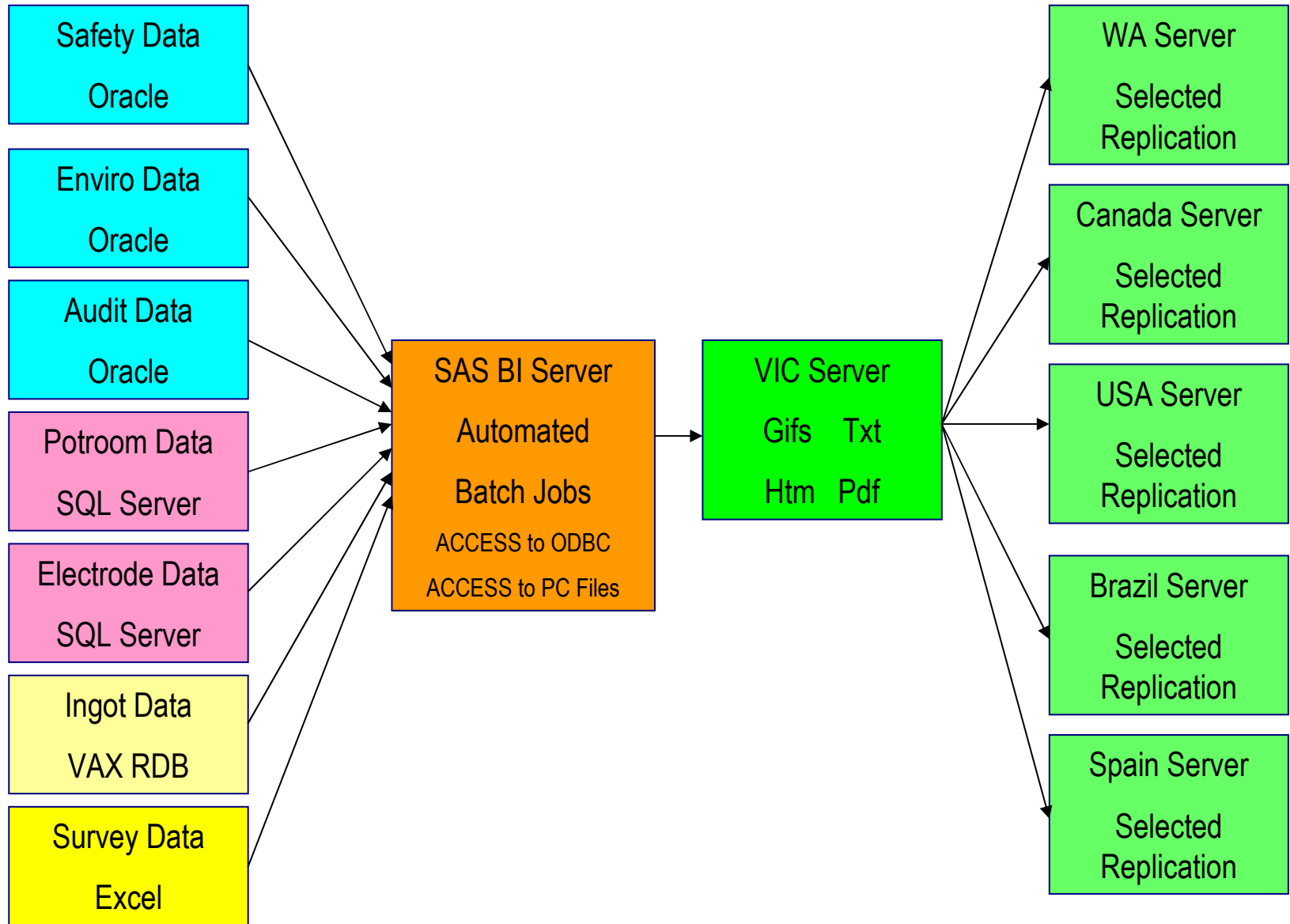
Bring automated KPIs into your Office

Flavio Giurco

*Manufacturing Systems Manager
Pt Henry Smelter (Geelong)
Alcoa World Alumina Australia*

*SAS Melbourne User Group Meeting
20th June 2007*

Data Flow



SAS Code

GIF Output

```
filename gifout "' &publish_path.cchart_&meas..gif";  
goptions device=gif hsize=7.9 vsize=5.8 gsfname=gifout gsfmode=replace;  
  <proc shewhart etc>  
run;quit;filename gifout clear;run;
```

Text Output

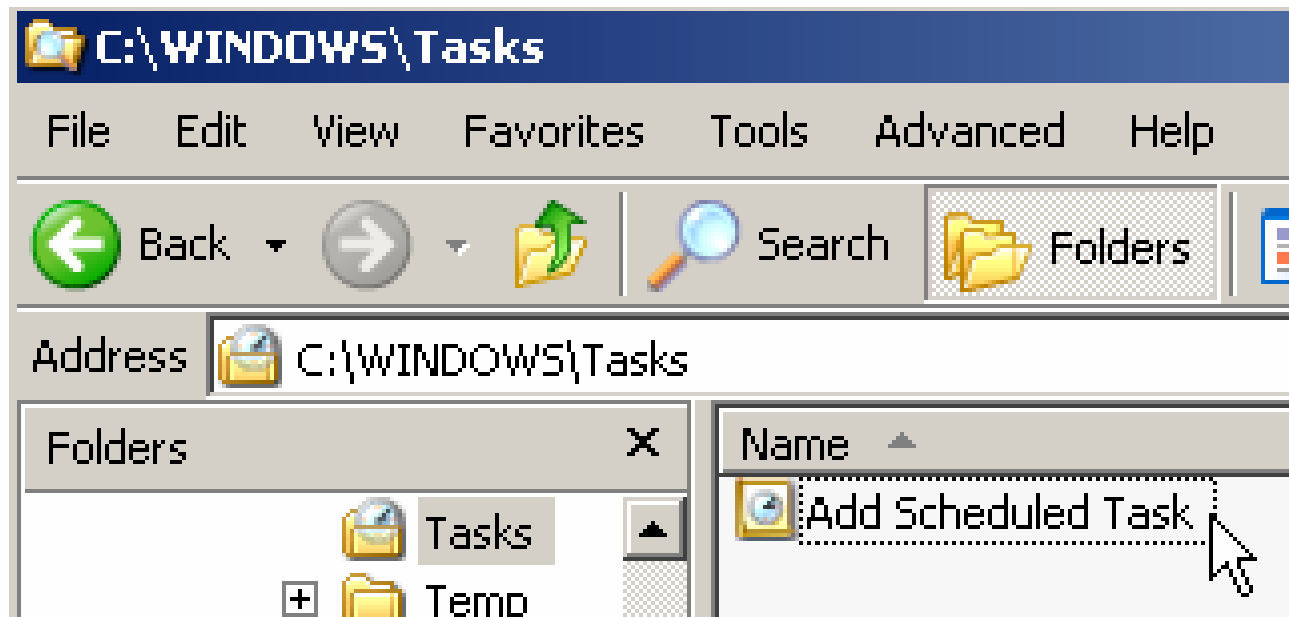
```
proc printto print="' &publish_path.table_&meas..txt'" new;  
  <proc tabulate etc>  
proc printto; run;
```

Batch Automation

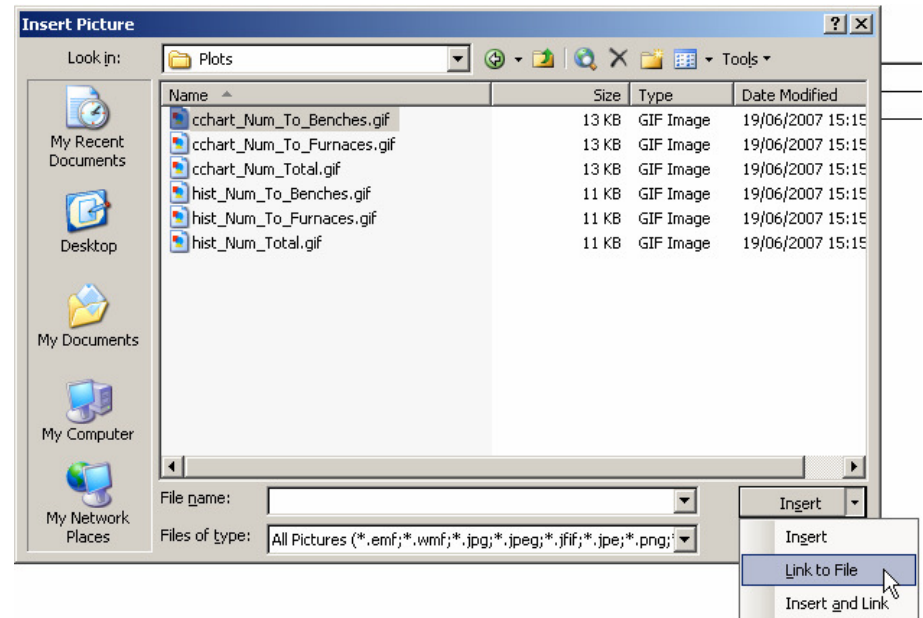
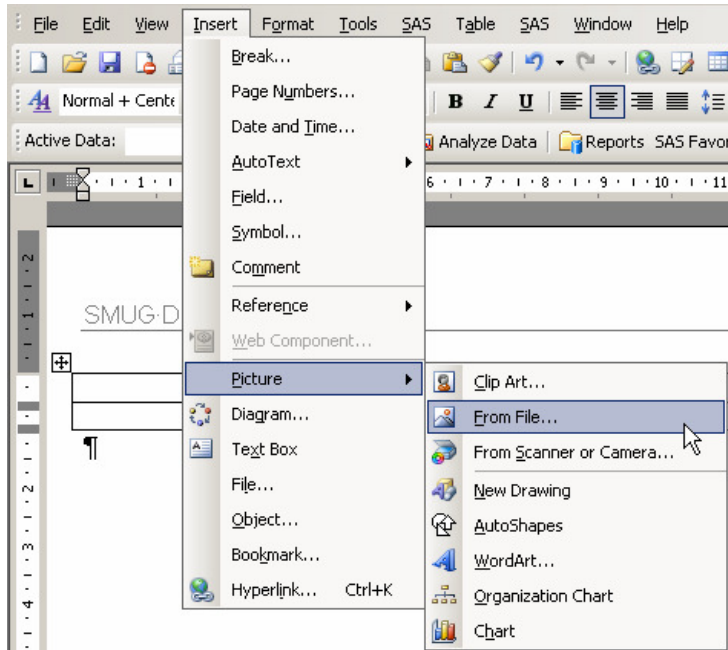
DOS Bat file

```
"C:\Program Files\SAS\SAS 9.1\sas.exe" -noterminal -SYSIN "c:\smug\pgms\SMUG_Demo.sas"
```

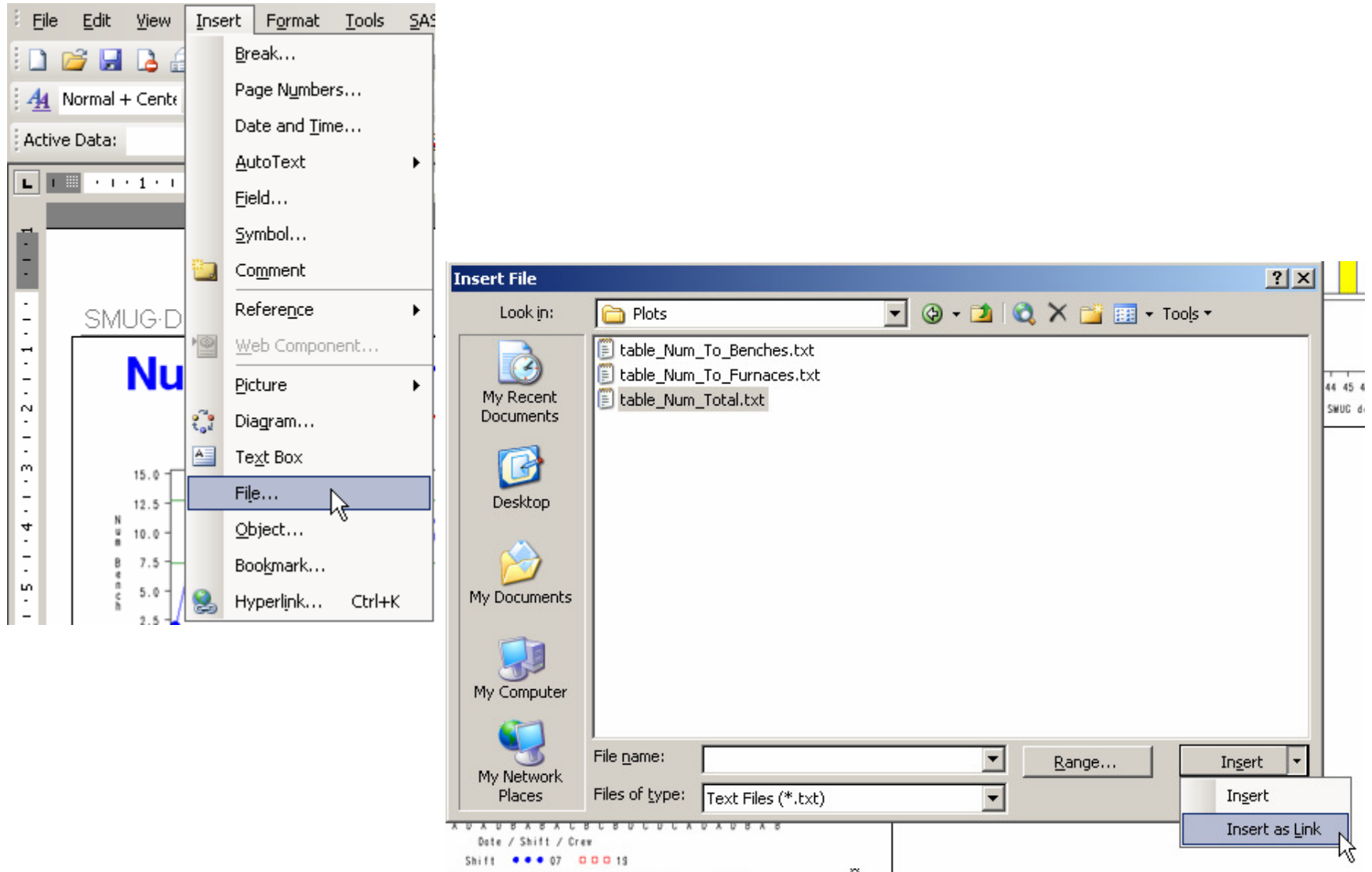
Windows Tasks Scheduler



Word - Links To Gifs



Word - Links To Text



Word – Displaying Field Codes

You can toggle between viewing the Word field codes and the displayed content using "Alt"+"F9". Use "F9" to update field codes.

<code>{ INCLUDEPICTURE "../Plots/cchart_Num_To_Benches.gif" * MERGEFORMAT \d }</code>	<code>{ INCLUDEPICTURE "../Plots/hist_Num_Total.gif" * MERGEFORMAT \d }</code>
<code>{ INCLUDEPICTURE "../Plots/cchart_Num_To_Furnaces.gif" * MERGEFORMAT \d }</code>	<code>{ INCLUDETEXT "C:\\SMUG\\Plots\\table_Num_Total.txt" \c AnsiText }</code>

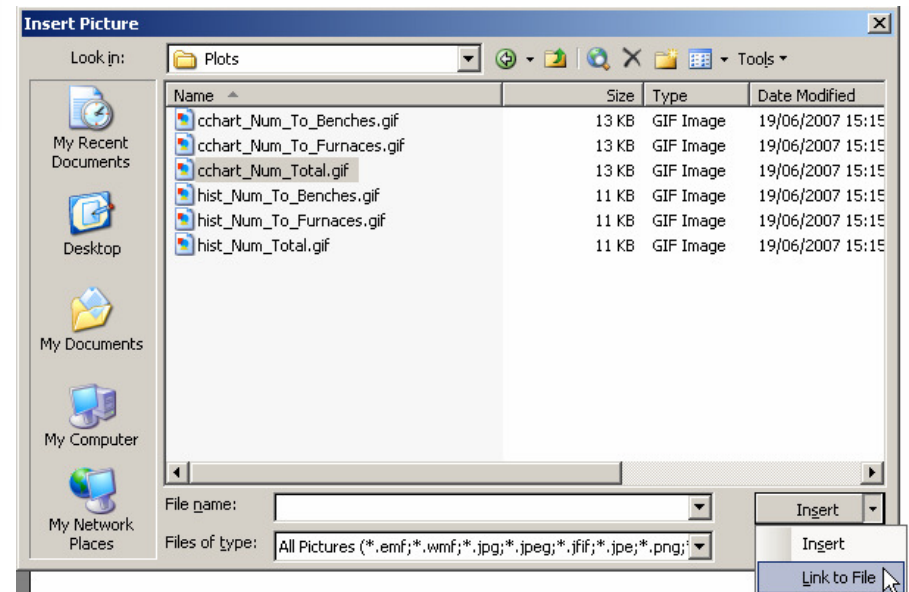
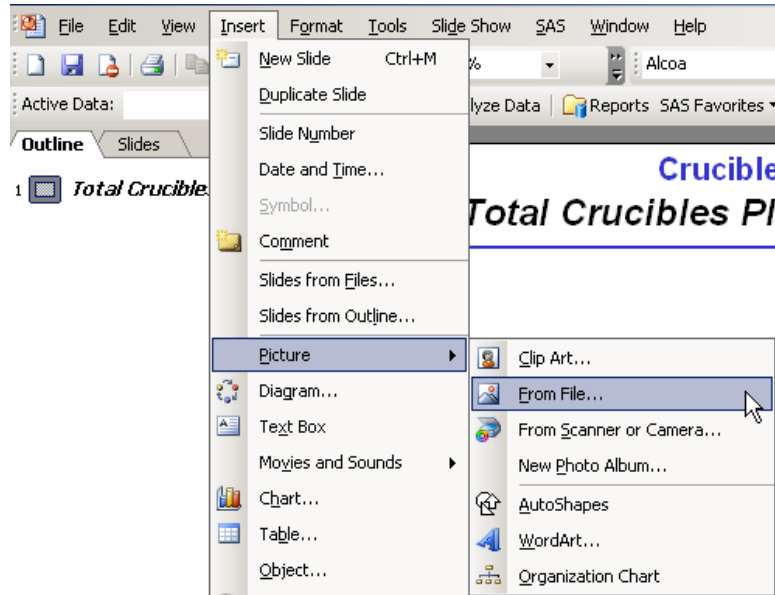
Note the difference in file path designations from absolute addressing "C:\\SMUG\\Plots\\..." to relative addressing "../Plots/...".

This difference in relative and absolute addressing can be a trap as Word adjusts these automatically.

If you do a "Save as" to a physical drive that is different to the drive where the plots are stored then Word converts everything to absolute addressing:

<code>{ INCLUDEPICTURE "C:\\SMUG\\Plots\\cchart_Num_To_Benches.gif" * MERGEFORMAT \d }</code>	<code>{ INCLUDEPICTURE "C:\\SMUG\\Plots\\hist_Num_Total.gif" * MERGEFORMAT \d }</code>
<code>{ INCLUDEPICTURE "C:\\SMUG\\Plots\\cchart_Num_To_Furnaces.gif" * MERGEFORMAT \d }</code>	<code>{ INCLUDETEXT "C:\\SMUG\\Plots\\table_Num_Total.txt" \c AnsiText }</code>

PowerPoint – Links to Gifs



Tips & Traps

Relative and absolute file paths

Watch these, as they can cause a lot of frustration.

Batch User

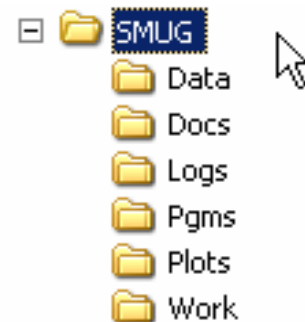
The login account used to run the SAS batch jobs needs to remain logged on to have access to network drives.

Working with Excel Files

SAS cannot read an Excel file if it is open so take a copy of the file and read it.

Folder structure

Separate the various types of files into different folders:



File Naming Conventions

Avoid using blanks in file names to avoid potential confusion with links.

Conclusion

- Automating the creation of plots and reports using SAS run in a batch environment enables standard reports to be created without relying on manual intervention.
- The incorporation of linked plots and reports into Word and PowerPoint allows wide ranges of plots scaled to suit the presentation to be combined with comments into widely used presentation tools.