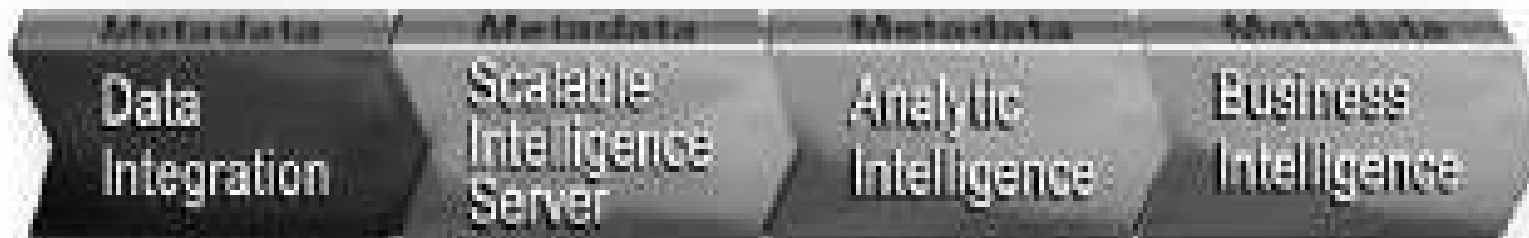


New Features of SAS® Data Integration (DI) Studio 3.4 (formerly known as ETL Studio)

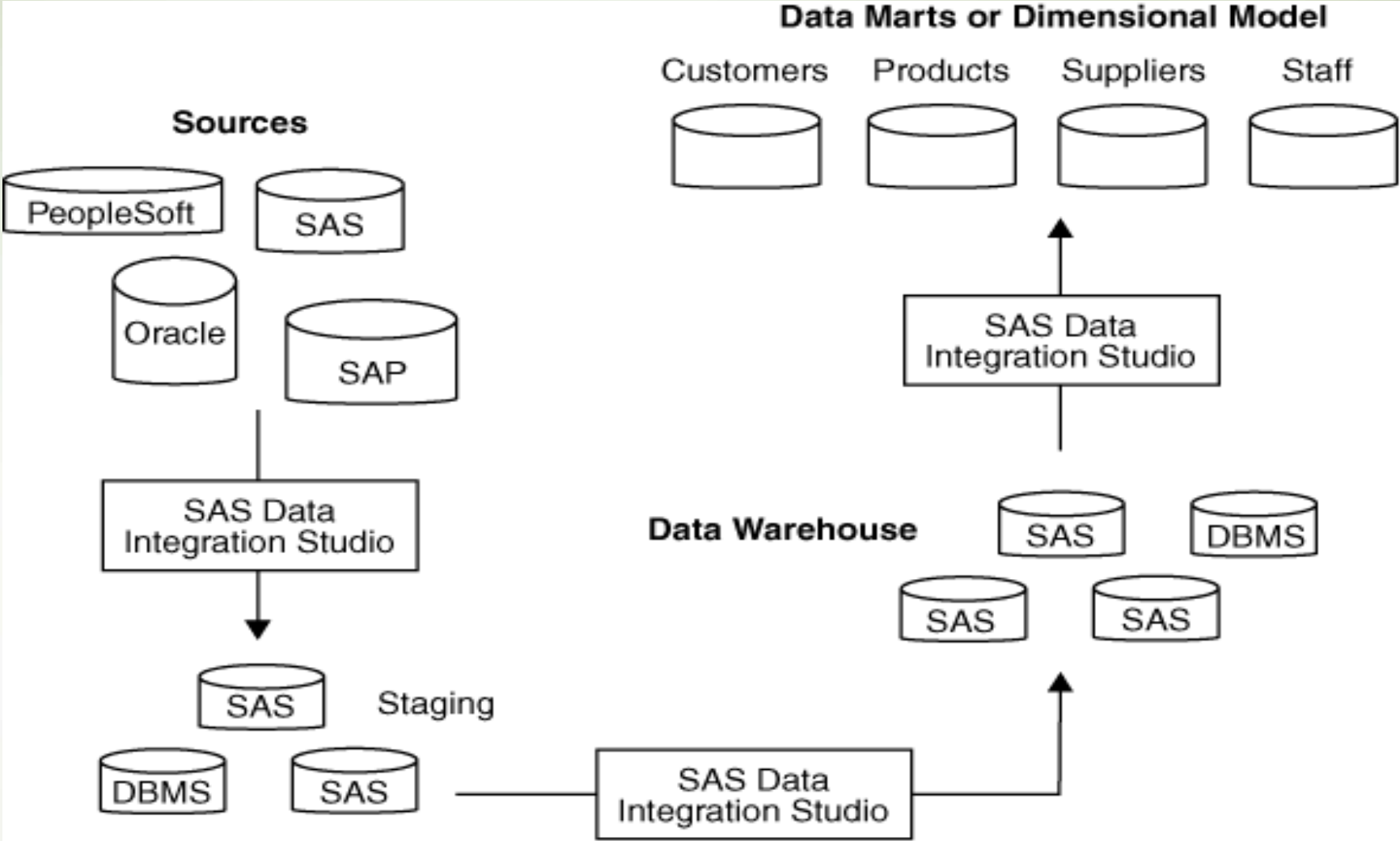
Alan Tsuji
Consultant: Decision Support Solutions

Components of the SAS® Intelligence Platform

- Data Integration and ETL
 - Business Intelligence
 - Analytics
 - Intelligence Storage



Overview of Warehouse Design



Data Integration and ETL

- SAS Data Integration Studio
- SAS/ACCESS
- SAS Data Surveyor
- SAS Data Quality Server
- Platform Process Manager
- SAS Metadata Repository
- SAS Management Console

SAS® Data Integration Studio

3.4 Enhancements

- [better management of transformation output](#)
- [new support for Web services](#)
- [new support for dynamic cluster tables](#)
- [enhanced support for XML libraries and tables](#)
- [enhanced View Data window](#)
- [enhanced SQL processing](#)
- [enhanced impact analysis](#)

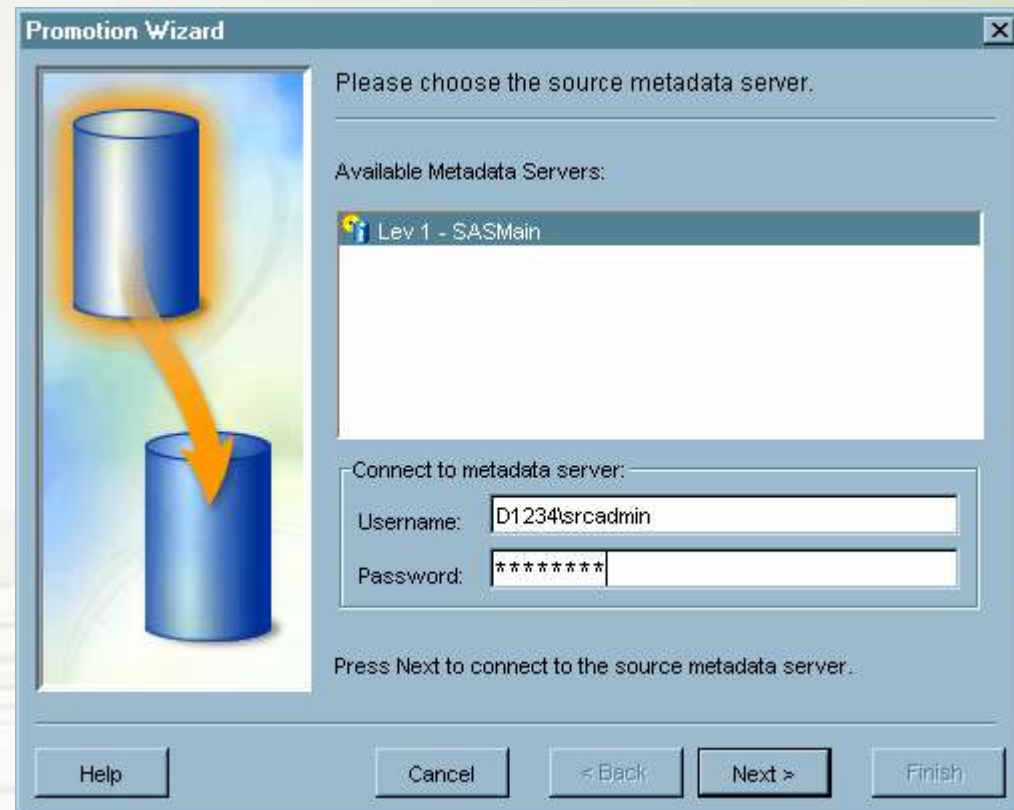
SAS® Data Integration Studio

3.4 Enhancements

1. [Enhanced Import & Export of SAS Metadata](#)
2. [New support for message queues](#)
3. [Enhanced table loading](#)

1. Current process to Export/ Import metadata

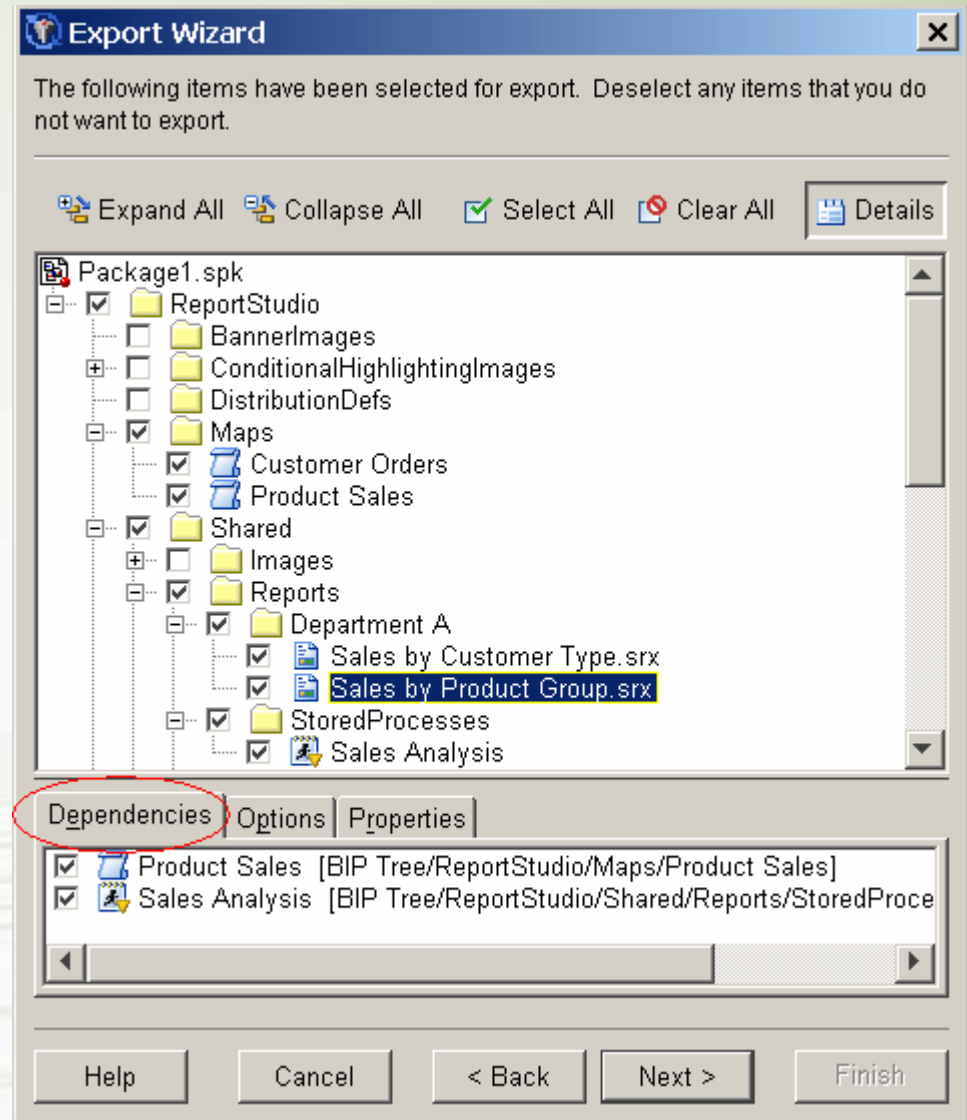
The Promotion & Replication Wizards

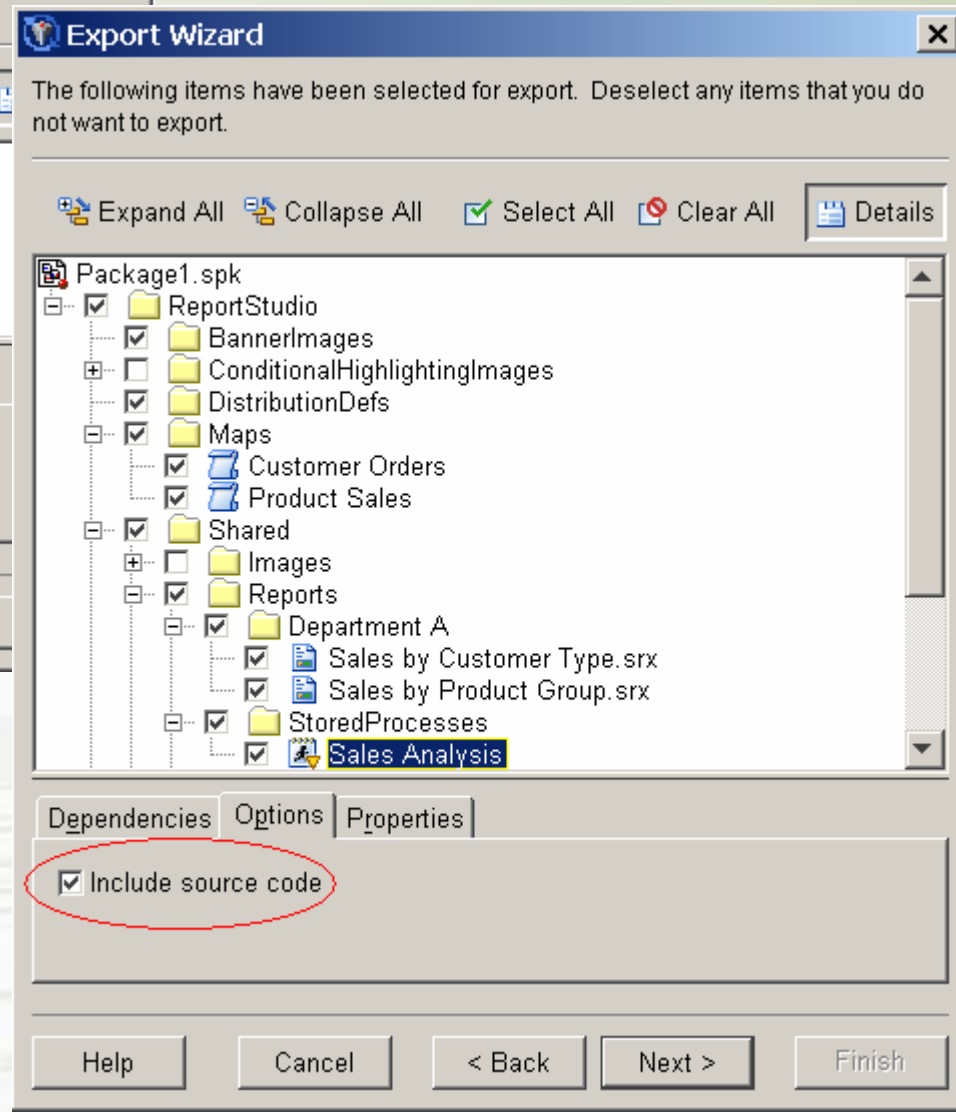
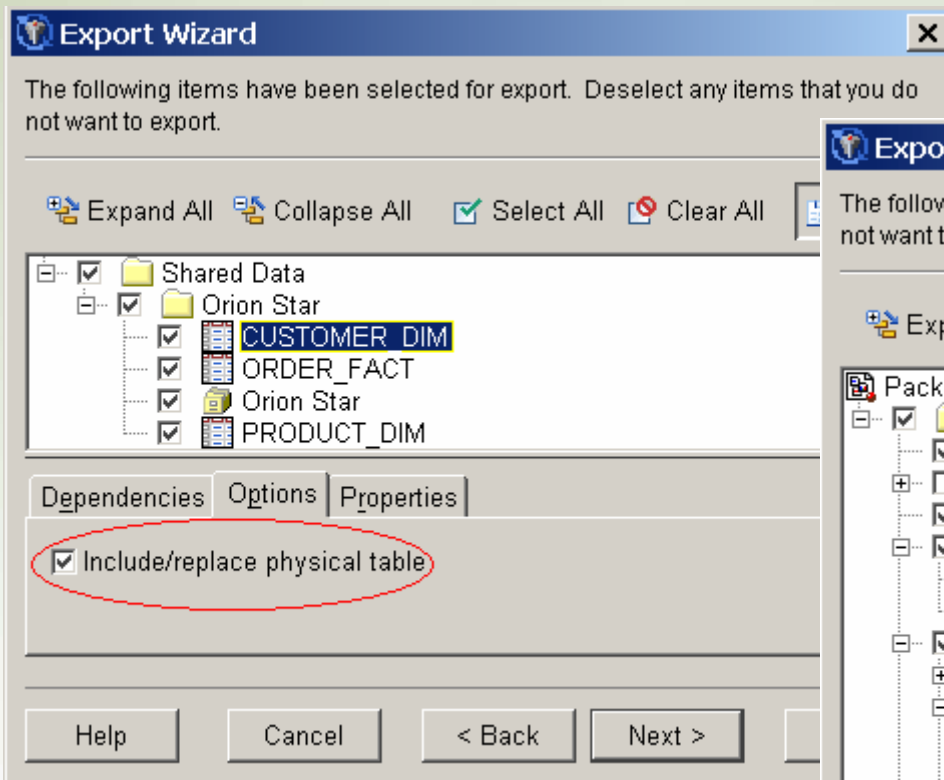


SAS® Data Integration Studio

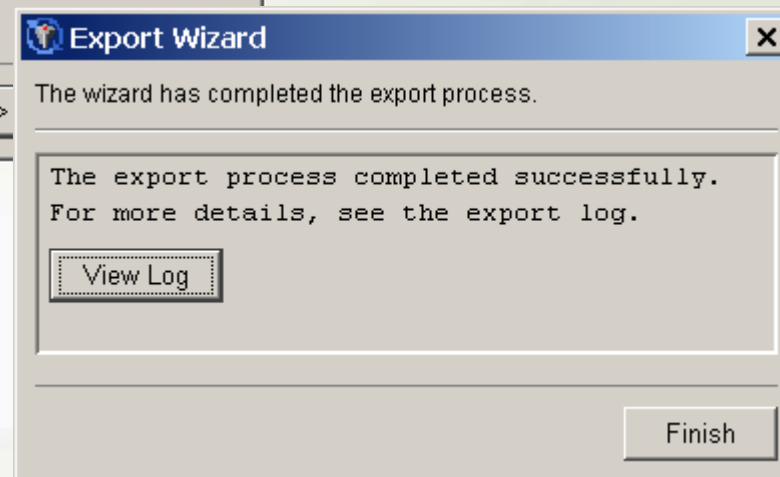
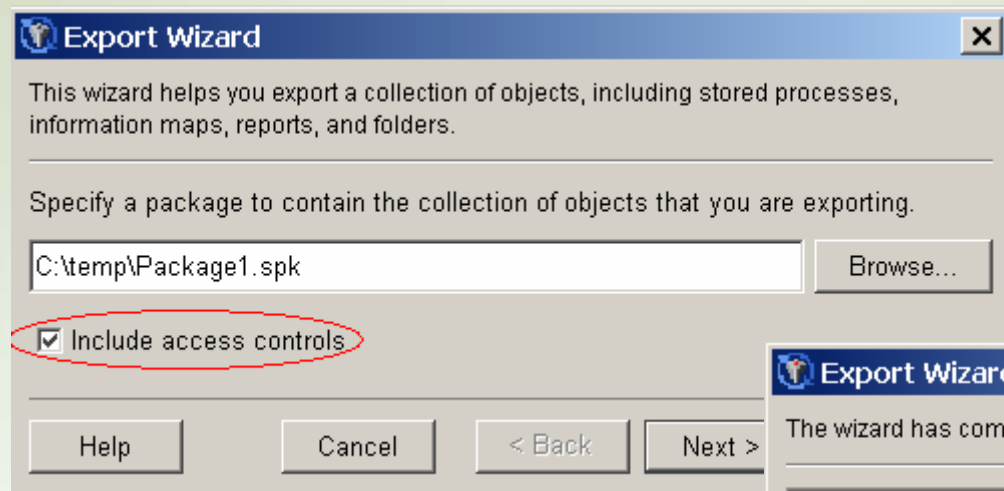
3.4 Enhancements

Enhanced Import & Export of Metadata



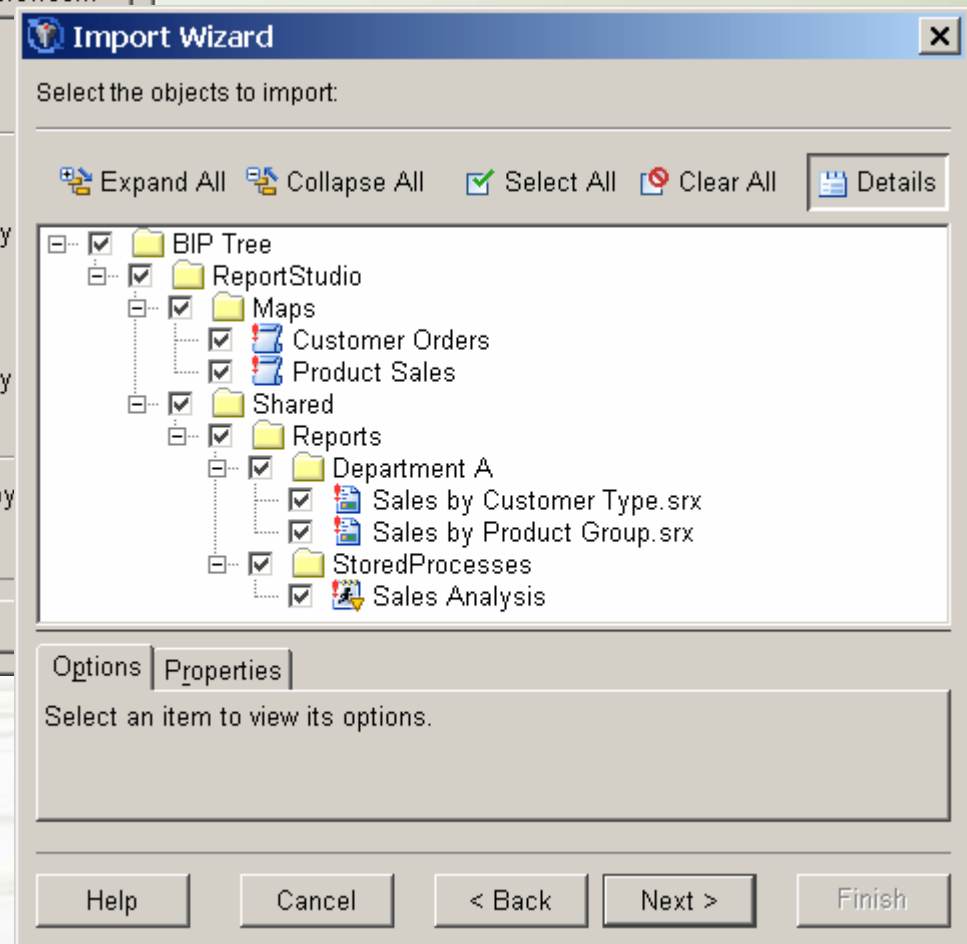
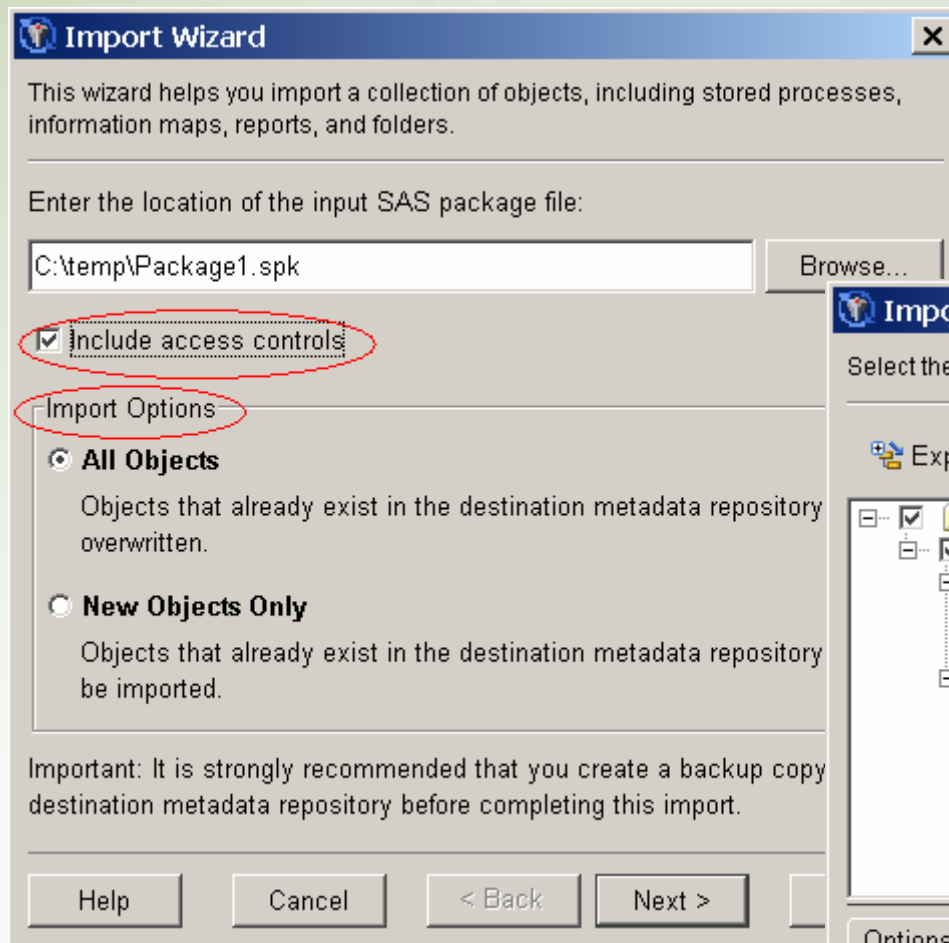


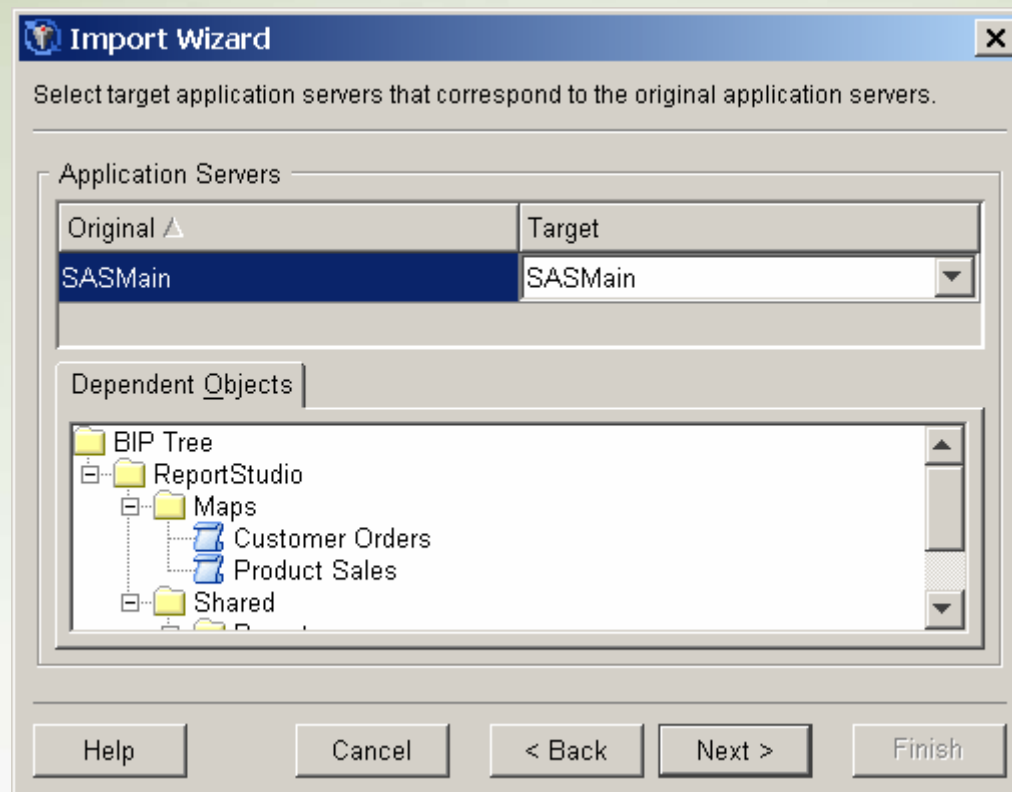
Now able to move
Data with Metadata



These objects and files are packaged

These objects can now be imported (all or selectively)





The objects can also be selectively associated with given metadata

2. Current process to access a Message Queue (MQ)

```
action = "GEN";
parms="OBJECTNAME";
objname="LOCAL";
call mqod(hod, action, rc, parms,
  objname);
if rc ^= 0 then do;
  put 'MQOD: failed with rc= ' rc;
  msg = sysmsg();
  put msg;
  goto exit;
end;
```

```
options="INPUT_SHARED";
call mqopen(hconn, hod, options,
  hobj, cc, reason);
if cc ^= 0 then do;
  put 'MQOPEN: failed with reason=
  ' reason;
  goto exit;
end;
```

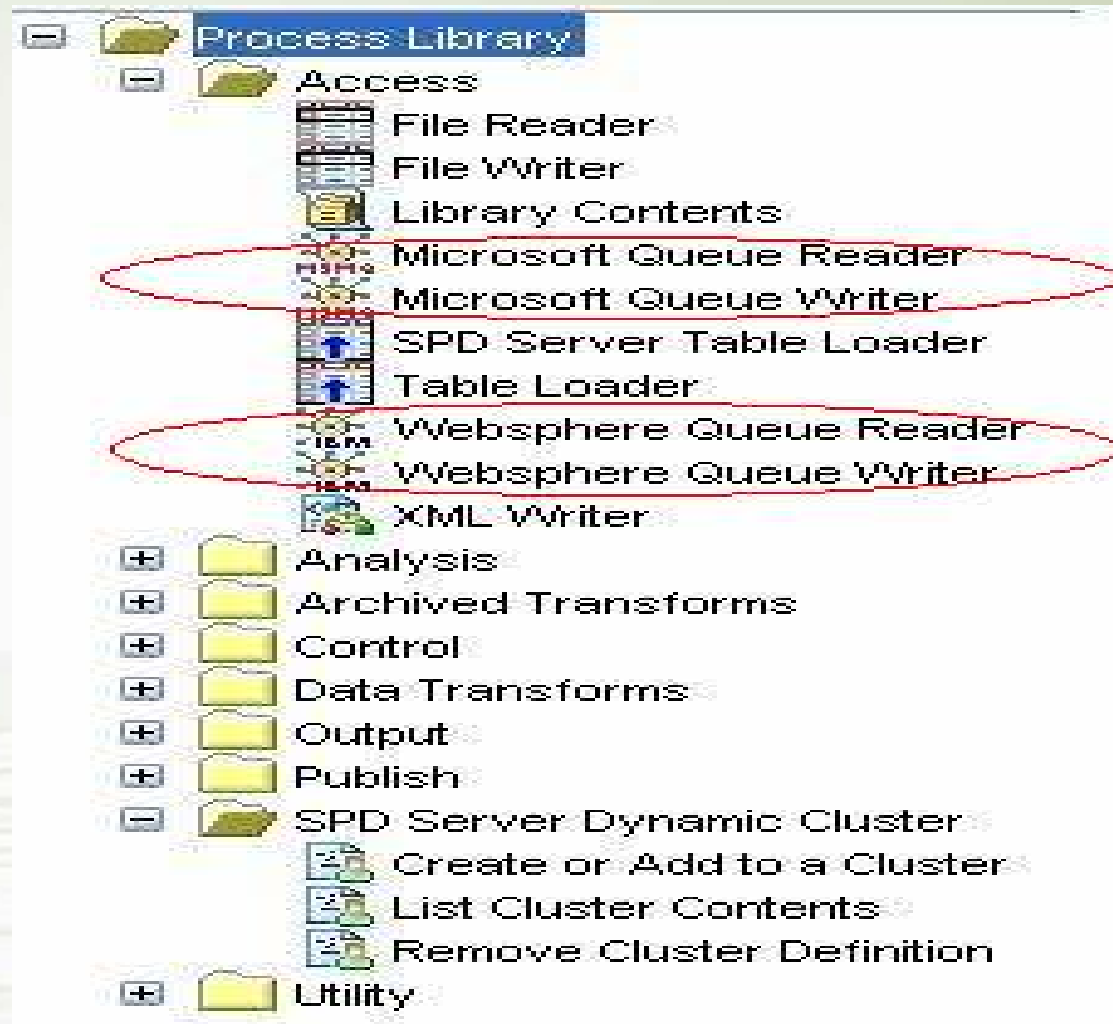
```
parms= "SASQSID";
call mqgmo(hgmo, action, rc,
  parms, sid);
if rc ^= 0 then do;
  put 'MQGMO: failed with rc= ' rc;
  msg = sysmsg();
  put msg;
  goto exit;
end;
```

```
desc="CHAR,,100";
call mqmap(hmap, rc, desc);
if rc ^= 0 then do;
  put 'MQMAP: failed with rc= ' rc;
  msg = sysmsg();
  put msg;
  goto exit;
end;
```

SAS® Data Integration Studio

3.4 Enhancements

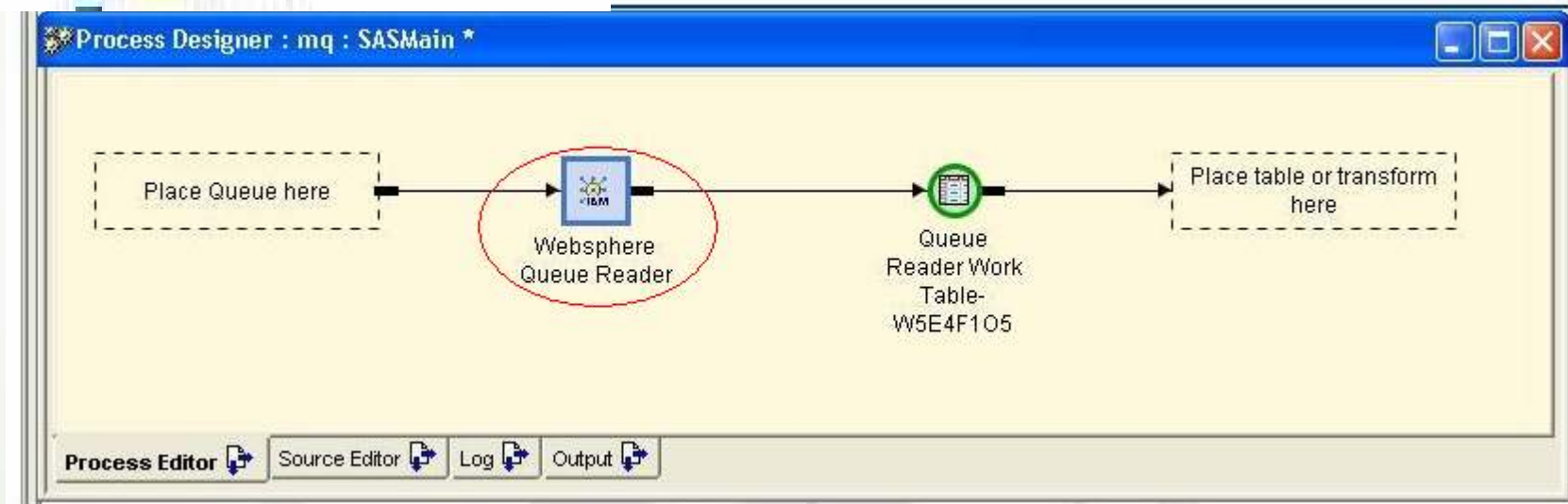
New
support
for
message
queues



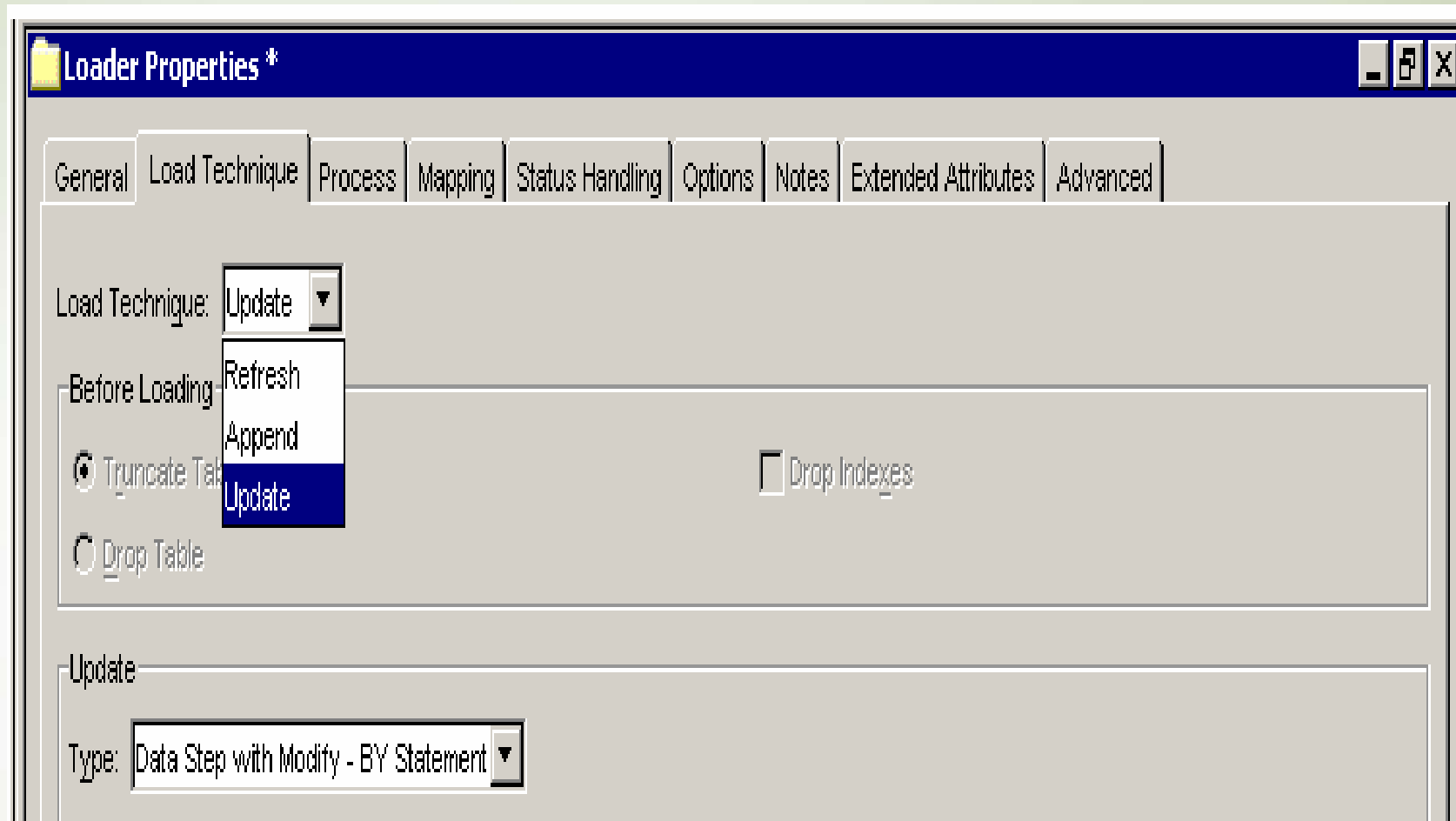
New support for message queues



- Register Metadata for Queues



3. Current options to Load



SAS® Data Integration Studio

3.4 Enhancements - Enhanced table loading

The screenshot shows the 'Table Loader Properties' dialog box for a target table in SAS. The 'Load Technique' tab is selected. The 'Load style' is set to 'Replace' and 'Replace: Entire table'. The 'Matching rows' is set to 'SQL Set'. The 'New rows' is set to 'Append (Proc Append)'. The 'Constraint Condition' is set to 'On (table creation)' for 'Before Load' and 'Leave on' for 'After Load'. The 'Index Condition' is set to 'Leave off' for 'Before Load' and 'On (table creation)' for 'After Load'. The 'Blanks may replace non-blank values' checkbox is unchecked.

Table Loader Properties : targetTable : SAS

General Load Technique Process Mapping Status Handling Options Notes Extended Attributes Advanced

Load style: Replace Replace: Entire table

Technique(s)

Matching rows: SQL Set Blanks may replace non-blank values

New rows: Append (Proc Append)

Constraint Condition

Before Load: On (table creation)

After Load: Leave on

Index Condition

Before Load: Leave off

After Load: On (table creation)

Conclusions

Lots of new options that:

- Improved flexibility of code
- Offers greater productivity gains
- Improves performance

Haven't upgraded yet?

- **Some prerequisites:**

- Requires SP 4.
- Requires updated JRE.
- Hotfixes to be applied to server and to the client.
- An update to the metadata will need to be performed.

Be sure to check in your stuff first & Don't go back to the old version.

Useful documentation

- SAS Intelligence Platform: System Administration Guide
- <http://support.sas.com/onlinedoc/913/getDoc/en/bisag.hlp/a003150593.htm>
- ETL Performance Tuning Tips
- <http://support.sas.com/documentation/whitepaper/technical/ETLperformance07.pdf>

Useful documentation

- Backing Up SAS Content In Your SAS®9 Enterprise Intelligence Platform: Considerations for Creating Backups of Your SAS Content
- <http://support.sas.com/documentation/whitepaper/technical/contentbackup.pdf>
- Best Practices for SAS®9 Metadata Server Change Control
- <http://support.sas.com/documentation/whitepaper/technical/MetadataServerchngmt.pdf>

Useful documentation

- SAS 9.1.3 Intelligence Platform: Desktop Application Administration Guide**
- SAS 9.1.3 Intelligence Platform: Data Administration Guide
- SAS 9.1.3 Intelligence Platform: Security Administration Guide, Second Edition

http://support.sas.com/documentation/onlinedoc/91pdf/index_913.html#intell



Questions?