

PETER EBERHARDT (Cont')

Sports/Hobbies:

I enjoy getting outdoors. In spring and fall, I canoe in a canvas-covered, cedar strip canoe I built a few years ago. In the winter, I snowshoe and camp two or three times a year. In the summer, I walk, ride my bicycle and get out on motorcycle trips. The fall NESUG and SESUG conferences are ideal opportunities for a motorcycle tour.

I am also an avid home brewer, and with a friend and fellow beer lover, am currently finishing off an interactive DVD on all grain brewing.

My ideal weekend would be just as they are. Some relaxation, some fun.

Favourite Foods:

Anything that is cooked properly, or in the case of sushi, not cooked properly. And I always eat my veggies first.

If I could be anything at all (besides a SAS programmer), I would be.... A brew master at my own brew pub.

The best tip I can think of ... go to SAS Global Forum or any of the local or regional user group meetings you can manage. No matter how long you use SAS there is always something new to you. For me, this is something I recently discovered ... SAS editor abbreviations.

An editor abbreviation is a set of detailed commands that is invoked in the SAS enhanced editor either using a shortcut key, or by typing in a short keyword (the abbreviation). Let me explain.

I regularly use PROC SQL and a connection to ODBC so I type the string:

```
PROC SQL;
connect to ODBC (dsn=dbConnection);
exec (
    select
    from
    where
) by odbc;
```

```
create table XXXXX as
select * from connection to odbc
(
);
disconnect from odbc;
quit;
```

Simple enough piece of code, but it does get tedious. So, editor abbreviation to the rescue. To create a new abbreviation in EG 4.1 you must be in a code node, then select Code...Add Abbreviation. In SAS, select Tools.... Add Abbreviation. After that the process is the same. Figure 1 shows the dialogue box that is displayed. You enter the abbreviation string (in my case PSQL) and the detailed text to insert and select OK.

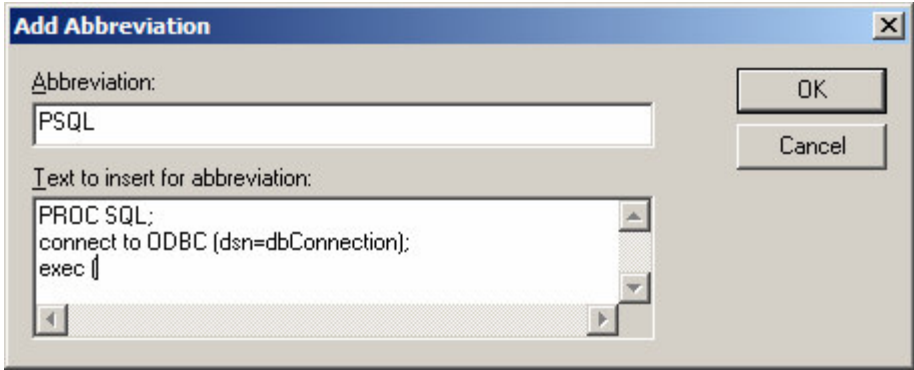


Figure 1

Now, whenever I type PSQL in the enhanced editor, the detailed text is displayed in a popup box (Figure 2) and I can insert this text by hitting the tab key. The process can be simplified further by creating a shortcut key, but as your teachers used to say, I will leave that to you as an exercise.

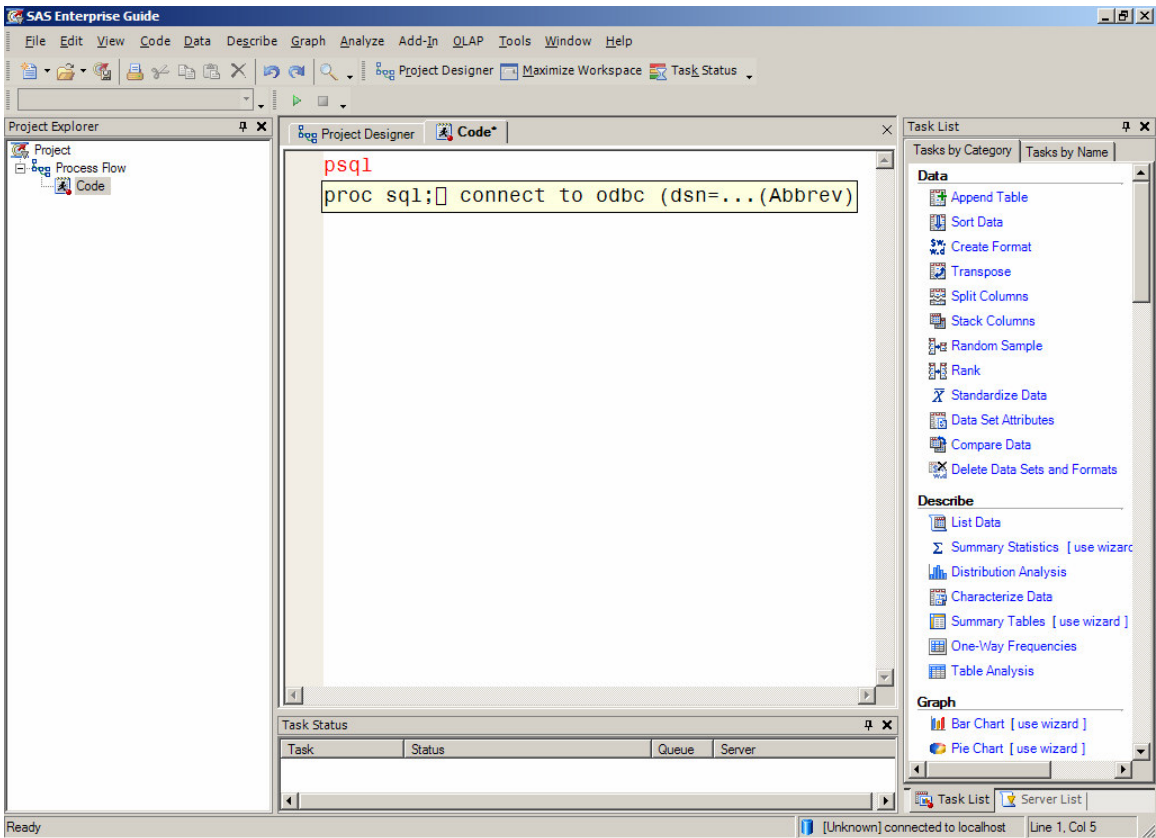


Figure 2