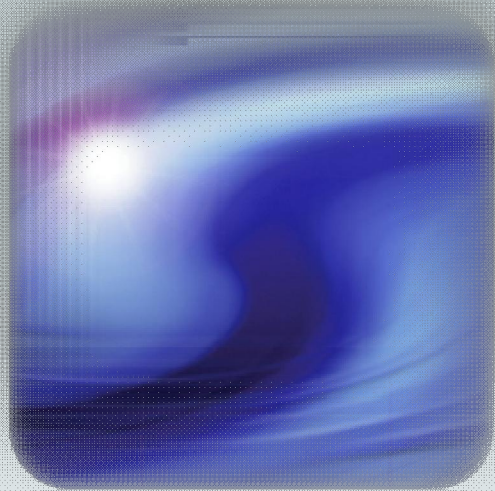




THE
POWER
TO KNOW[®]



Winnipeg SAS User Group

29APR2010

ODS Graphics Designer

**THE
POWER
TO KNOW[®]**

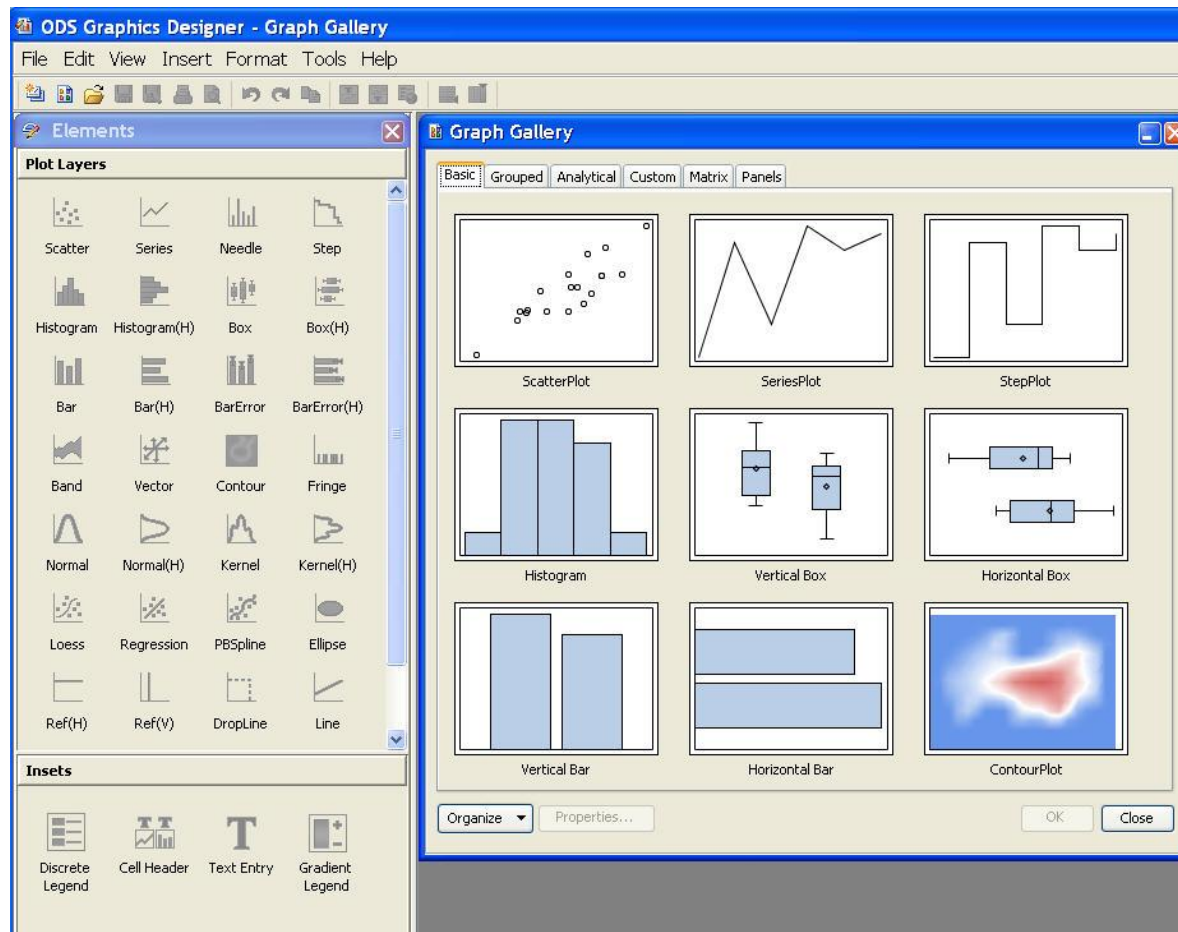
Sylvain Tremblay

SAS Canada – Education

When there is a will, there is a way !!!



Graphics, point & click !



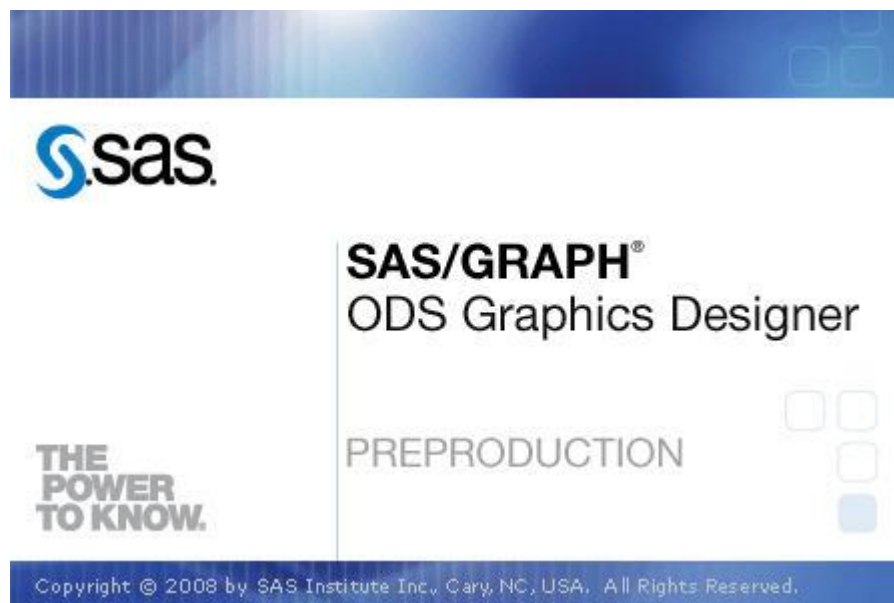
Agenda

- What can I use the ODS Graphics Designer for?
- Demo
- Conclusion / Questions

What can I use the ODS Graphics Designer for?

- Create customized analytical graphics by pointing & clicking, without having to learn the SAS Graph Template Language
- Run graphics in batch through the new SGDESIGN procedure of SAS/Graph
- Create a graph through the union of a dataset and a template by using the new SGRENDER procedure of SAS/Graph

Demo



Plot Types that can be mixed in a cell

- Scatter, Series, Band, Needle, Step, Vector, Regression, Loess, PBSpline, Ref Line, Drop Lines, Contour Ellipse, Line
- Bar, Serie, Ref Line, Drop Line
- Histograms, Density, Fringe, Ref Line

In summary,

- The SAS Graph Template Language (GTL) will enable you to customize any graphic or create your own template
- You can do most of that work by pointing & clicking through the ODS Graphics Designer
- You can then run your graphics in batch by using the SGDESIGN Proc
- You can also “marry” a dataset with a graph template to create a graphic through Proc SGRENDER

To learn more

DOCUMENTATION

ODS Graphics Designer

<http://support.sas.com/documentation/cdl/en/grstatdesign/61690/HTML/default/titlepage.htm>

SAS Graph Statistical Procedure

<http://support.sas.com/documentation/cdl/en/grstatproc/61948/HTML/default/grstatprocwhatsnew902.htm>

Questions?



THE
POWER
TO KNOW®

Thanks!

Sylvain Tremblay
sylvain.tremblay@sas.com