

CHALLENGES AND SUCCESSSES OF A SAS BUSINESS INTELLIGENCE IMPLEMENTATION

Chuck Mohamed
CM solutions Inc.

Agenda

- ▣ Definition
- ▣ Context
- ▣ Examples
- ▣ Q and A

Business Intelligence - defined

“The ability to apprehend the interrelationships of presented facts in such a way as to guide action towards a desired goal.”

- Hans Peter Luhn, 1958

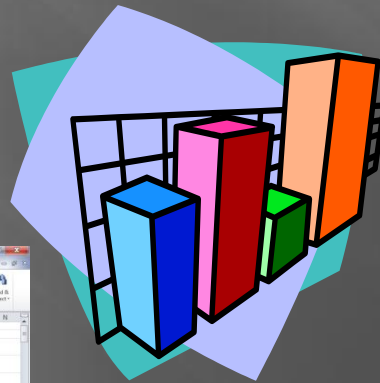
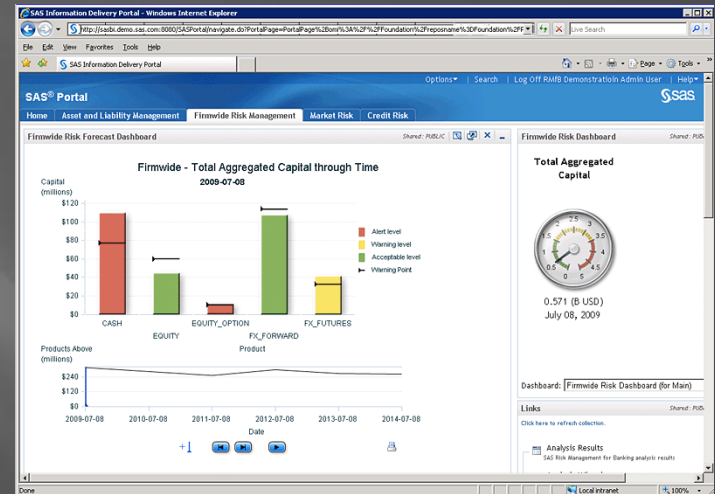
Definition

A **challenge** is a general term referring to things that are imbued with a sense of difficulty and **victory** - Wikipedia



Definition

- What does the word "Report" mean?
 - Formatted, printed report?
 - Data Extract?
 - Spreadsheet
 - Dashboard?



Rank	Company (Year End)	Revenue	Profit	Dividend	Cash Flow			
		\$	\$	Yield	Per %			
		% Change	% Chang	Share	% Chang			
1	Oak Metropolitan & Co. LP (Qe02)	1,607,700	22	154,580	10	7.07	2.59	-3.77
2	Fidelity Canadian Bond Trust (Qe02)	882,300	-12	-70,900	-175	9.45	2.73	-9.59
3	North West Co. Fund (Qe02)	749,759	8	34,469	19	7.5	3.7	-3.25
4	Canadian Oil Sands Trust (Qe02)	728,175	8	369,938	84	5.26	5.63	37.29
5	Investment Assets Fund (Qe02)	444,884	-8	26,380	150	15	1.19	-1.41
6	Equity Income Trust (Qe02)	440,686	7	55,105	3	10.21	0.99	-3.39
7	Investment Resilience (Qe02)	443,803	298	42,080	106	10.25	1.14	-6.4
8	Superior Plus Income Fund (Qe02)	440,900	-19	68,800	84	10.1	2.16	10.89
9	Energy Resources Fund (Qe02)	222,028	-3	115,876	-36	11.84	4.03	-34.96
10	Canadian Income Fund (Qe02)	200,228	18	8,413	58	13.89	2.19	18.4
11	Parnotrust Energy Trust (Qe02)	489,511	2	49,067	-42	14.06	2.54	-13.18
12	Securian (Qe02)	471,862	18	172,208	8	8.96	1.27	-8.87
13	TimberWest Forest (Qe02)	465,800	1	39,300	-12	9	1.94	-8.79
14	MSC Global Trust (Qe02)	445,442	-14	67,863	-51	13.11	1.87	-26.63
15	Noranda Income Fund (Qe02)	385,747	-4	38,712	93	10.36	1.38	32.84
16	Manu Funds Income Fund (Qe02)	215,910	na	11,917	na	9.2	1.43	na

More Definitions

- ▣ Standard Reports
 - Automated, repeatable, regular, PRODUCTION reports
- ▣ Ad-Hoc Reports
 - Supported by individuals, run as required
- ▣ OLAP – Drill down reports
 - Specialized reports based on cube structure



DM

Statistical ,
Forecasting,

OLAP , Drill Down Reports

Ad Hoc Reports

Standard Reports

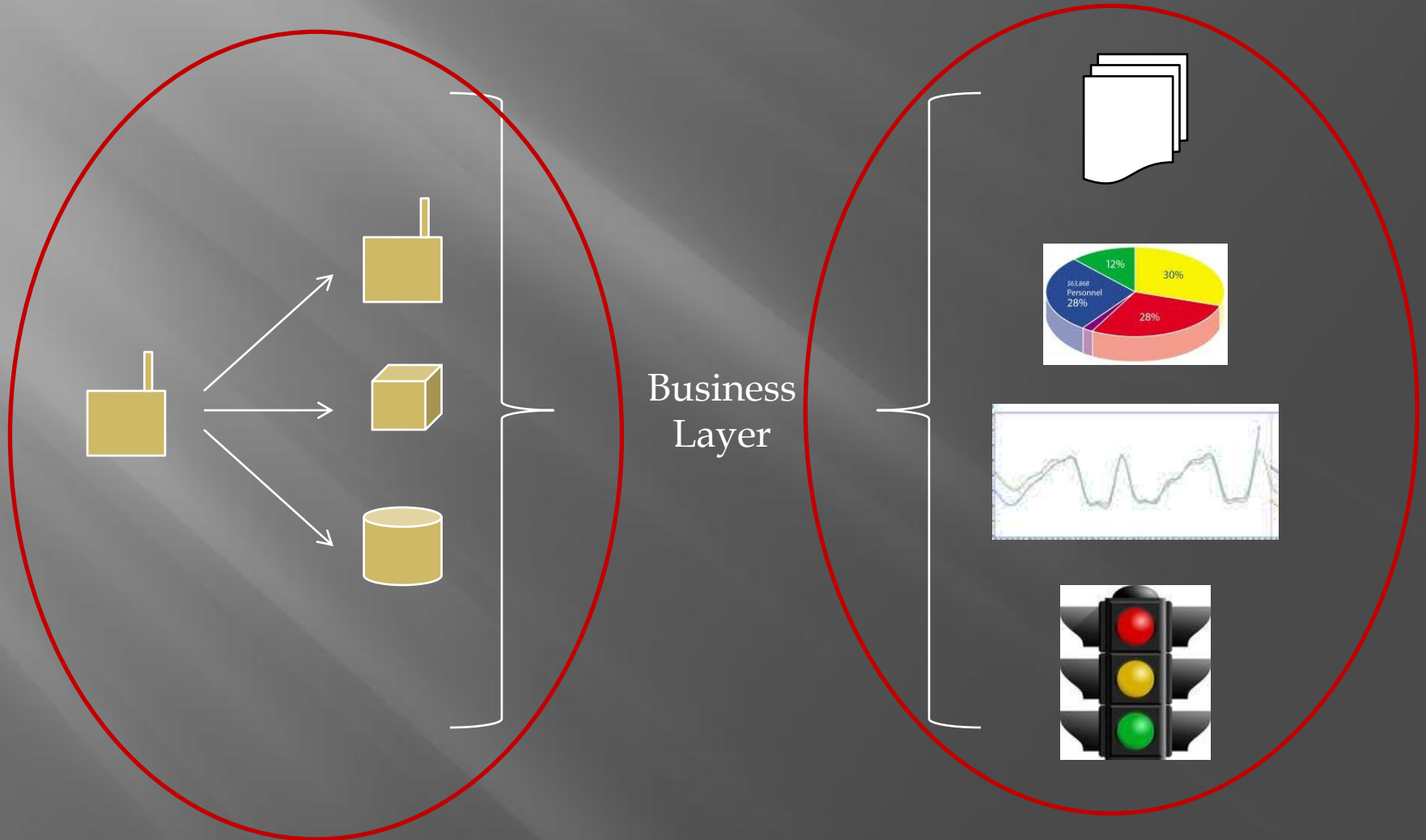
Multiple BI “personas” with very different requirements

	Consumers of info	Producers of info	BI style	App embedded BI	Non traditional BI (no data model)	Advanced Analytics	Rely on IT
Executives	✓✓		Reports Dashboards			Consume	✓✓✓
Power users	✓✓✓	✓✓✓	Queries OLAP		✓✓	Produce Consume	✓
Average users	✓✓	✓	Reports Queries OLAP	✓✓		Consume	✓✓
Casual users	✓		Reports Dashboards	✓✓✓		Consume	✓✓✓
Developers	Support	Support Produce	Support	Support	Support	Support	NA

Methodology

- Different components of BI require different disciplines
 - Data provisioning different from Ad Hoc reporting etc.
- Agile vs. Waterfall
 - Both can be valid

Methodology

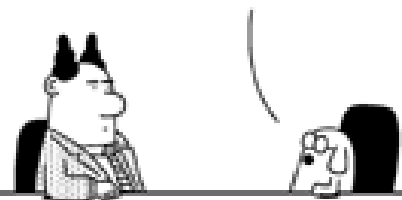


Focus on the business requirements

- ▣ Identify the key users(s)
 - May not always be apparent.
- ▣ 80 % of the work is the back end?
 - Data management
- ▣ Who is actually going to use the report/chart/analyses?

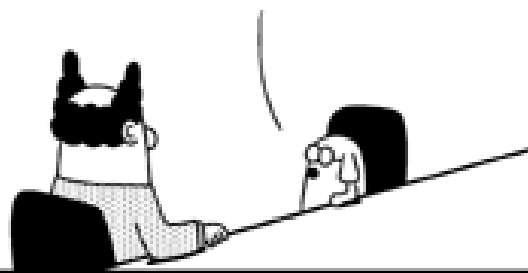
DOGBERT CONSULTS

YOU NEED A DASH-
BOARD APPLICATION
TO TRACK YOUR
KEY METRICS.



www.dilbert.com scottadams@aol.com

THAT WAY YOU'LL HAVE
MORE DATA TO IGNORE
WHEN YOU MAKE YOUR
DECISIONS BASED ON
COMPANY POLITICS.

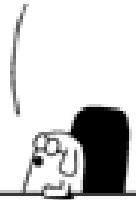


5-4-07 © 2007 Scott Adams, Inc./Dist. by UFS, Inc.

WILL THE
DATA BE
ACCURATE?



OKAY,
LET'S
PRETEND
THAT
MATTERS.



Technology

- ▣ The right tool for the job
 - Sometimes MS Excel might be what they need.
 - ▣ Add in for office
- ▣ Does the solution always require an OLAP cube?
- ▣ Beware the need to showcase the tools!
 - Select the appropriate project
- ▣ Stored Process, EG, Classic SAS, WRS, Information Maps, Predictive analytics, Forecasting etc?

“Solutioning”

- ▣ Business will often attempt to dictate “how” the report needs to be created as opposed to “what the content should be”
 - Business requirements need to be continuously validated with the ultimate user.
 - Quick deliverables help in validating requirements.

Challenges & Successes





DM

Statistical ,
Forecasting,

OLAP , Drill Down Reports

Ad Hoc Reports

Standard Reports

Challenge

- ❑ Querying the Data Warehouse does require some data management skills and an understanding of the data structure.
- ❑ Varying skillsets results in inconsistent analyses



Path to Success

- ▣ Create a “virtual data mart” so all analysts begin with the same set of data.
 - Parameterized
 - Common interface (EG)
- ▣ Standardized query eliminated complexity



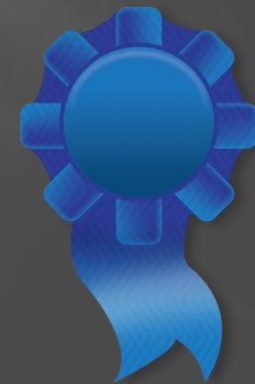
Challenge

- ❑ Requirement for sophisticated predictive analytics as.
- ❑ Expertise not available internally.
- ❑ Lack of clear understanding of data mining concept



Path to Success

- ▣ Created a project team with external Data Mining consultants and internal SME's
- ▣ DM experts created initial scoring model
- ▣ Internal SME's now use scores to conduct investigations...
- ▣ DM consultants will be brought in to "tweak" the models as required.



Challenge

- ❑ Lack of awareness of capabilities of SAS
- ❑ Require IT involvement
- ❑ Using inadequate tools
- ❑ Unaware of the power of an integrated suite



Path to success

- ▣ Appropriate training
- ▣ Internal user group
- ▣ Internal training
- ▣ Mentor a “champion” in each area
- ▣ Active business outreach program
- ▣ Establish relationships across the organization



Lessons Learned

- ▣ Commitment and clarity is required.
 - A Pilot / POC needs to be identified as such.
 - Move to production clarified.
- ▣ Use appropriate technology.
 - AMO?
- ▣ IT and Business need to be aware of project.
 - Need to part of the project team..

Lessons Learned

- ▣ Business processes/culture may need change management
- ▣ Data management will ALWAYS take longer than expected!
 - Analysts will usually need to do some further data management
- ▣ A “BICC “ will evolve from the BI program
- ▣ Success will ensure more demand!

Questions?

Go Canucks!

