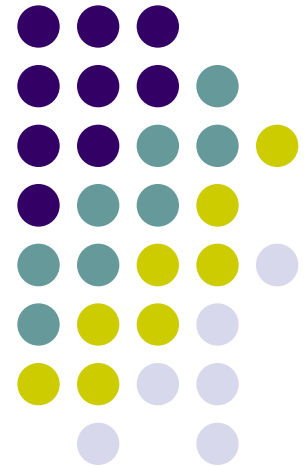


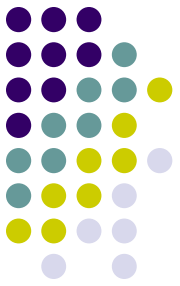
SAS® Enterprise Guide® Options:

Let the Tools Work for You

- Susan Jumper
- Harsha Kotian

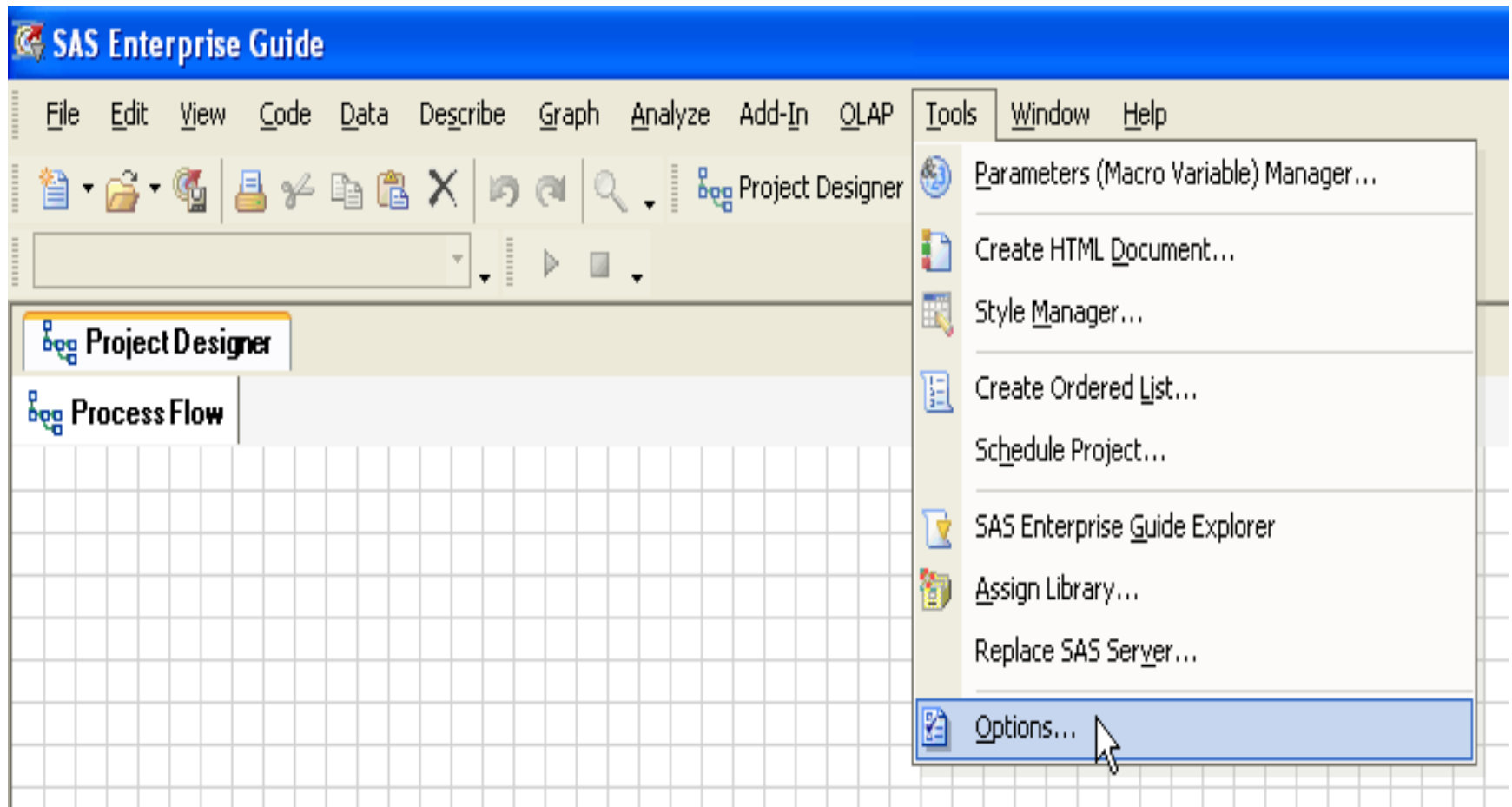
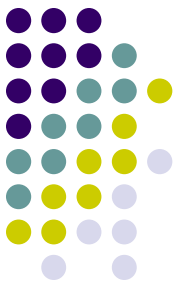


SAS Enterprise Guide Options: Introduction

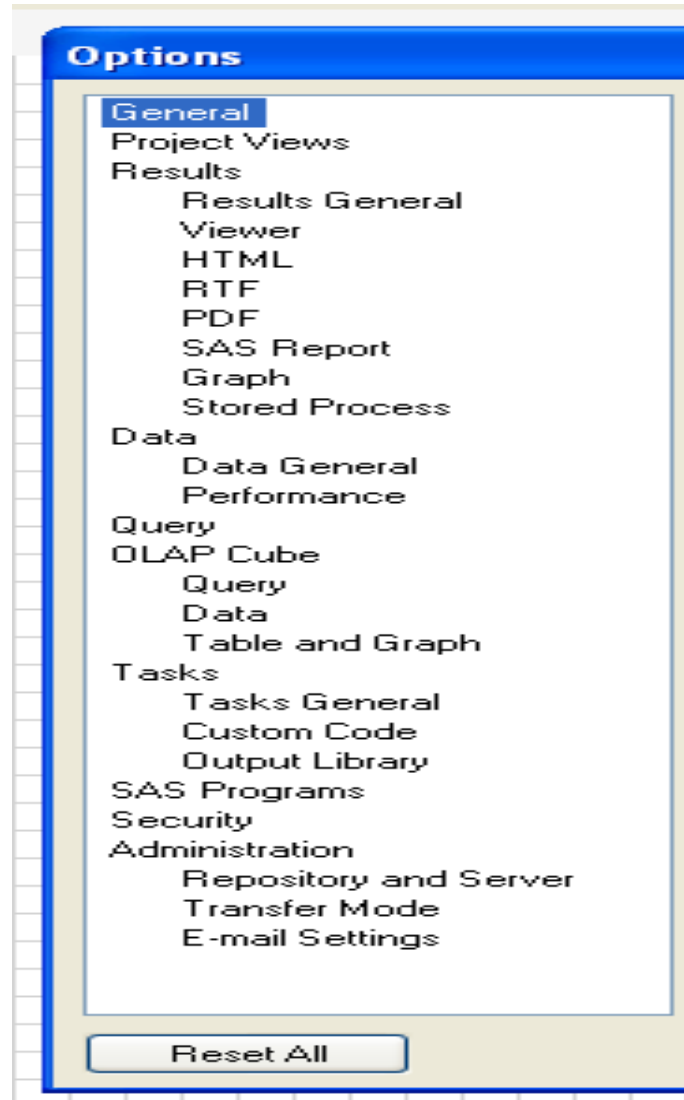
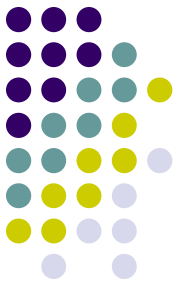


- Purpose
 - Know your options
 - Make informed decisions
- Environment
 - SAS Enterprise Guide 4.1, SAS 9.1.3
- User level
 - Intermediate knowledge of SAS EG is assumed

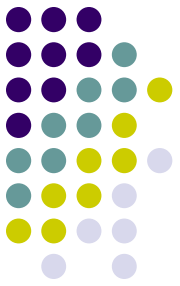
SAS Enterprise Guide Options: Introduction



SAS Enterprise Guide Options: Introduction

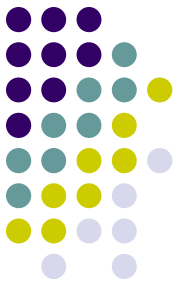


SAS Enterprise Guide Options: Categories



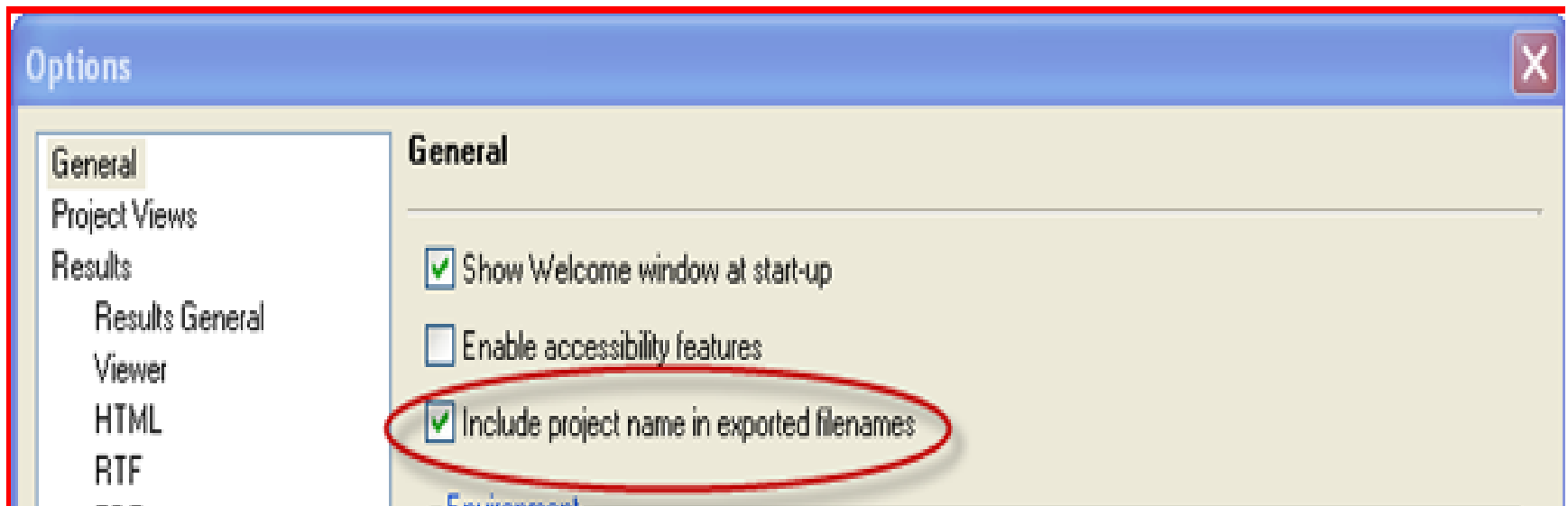
- Efficiency and Analysis
- Reporting
- Security
- Administration
- Visualization

SAS Enterprise Guide Options: Efficiency and Analysis

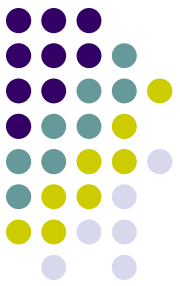


- Include Project Name In Exported Filenames

Tools->Options->General

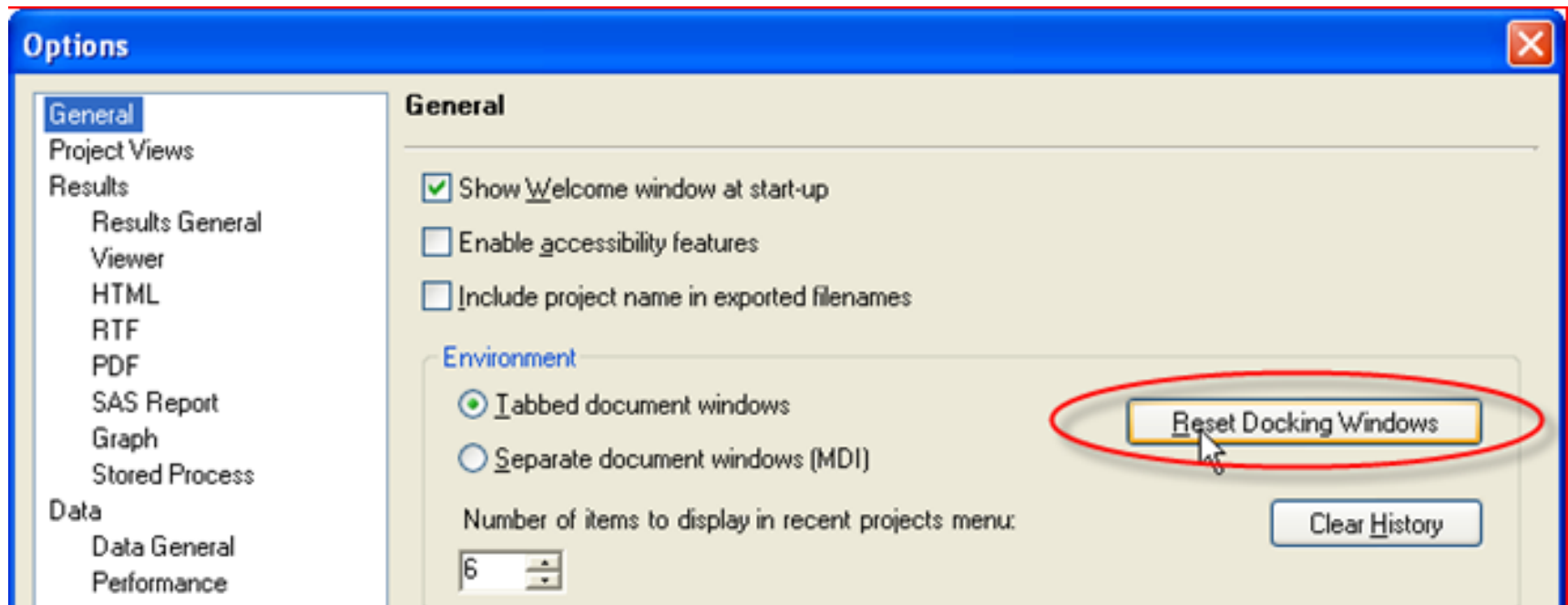


SAS Enterprise Guide Options: Efficiency and Analysis

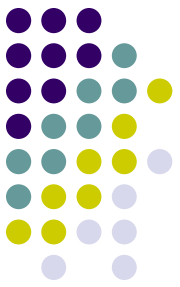


- **Reset Docking Windows**

Tools->Options->General

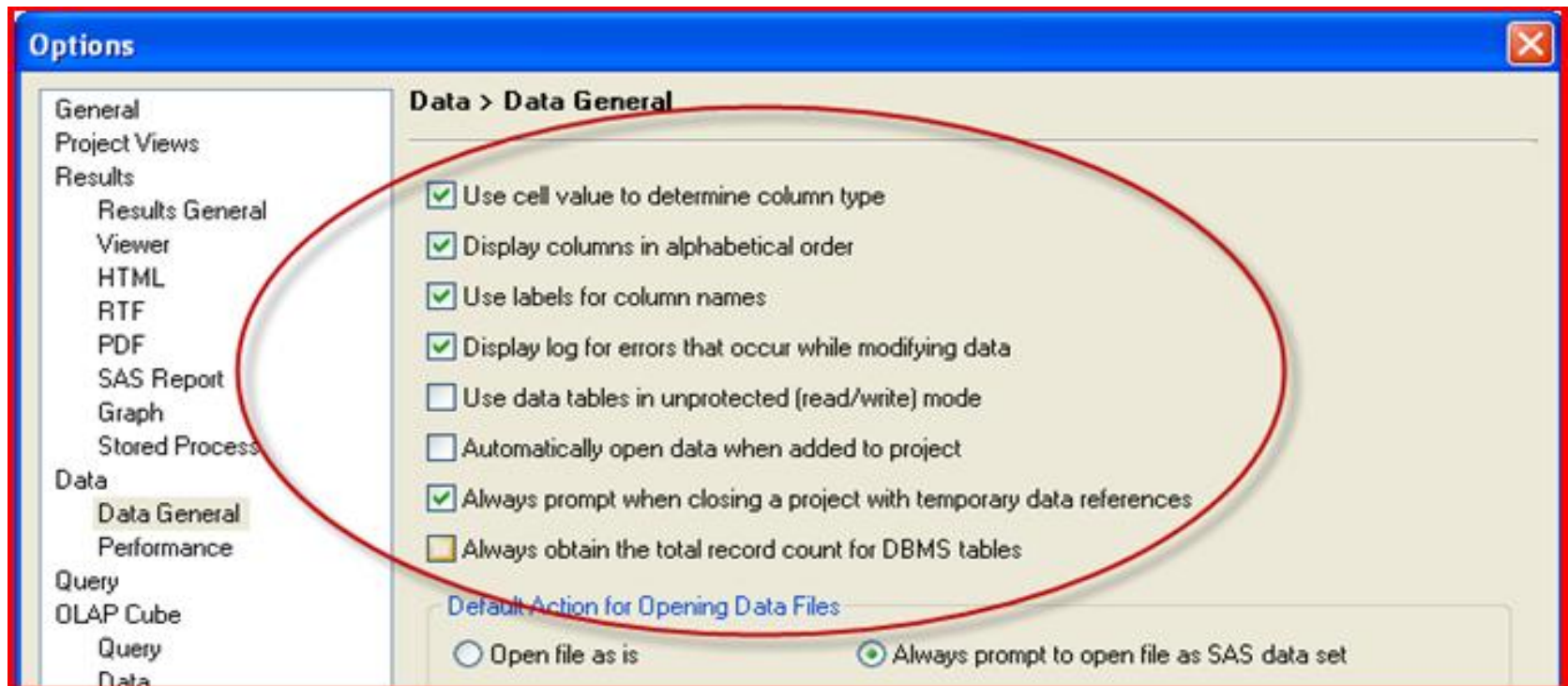


SAS Enterprise Guide Options: Efficiency and Analysis

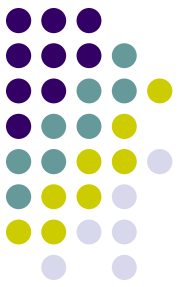


- Data General - Recommendations

Tools->Options->Data-> Data General

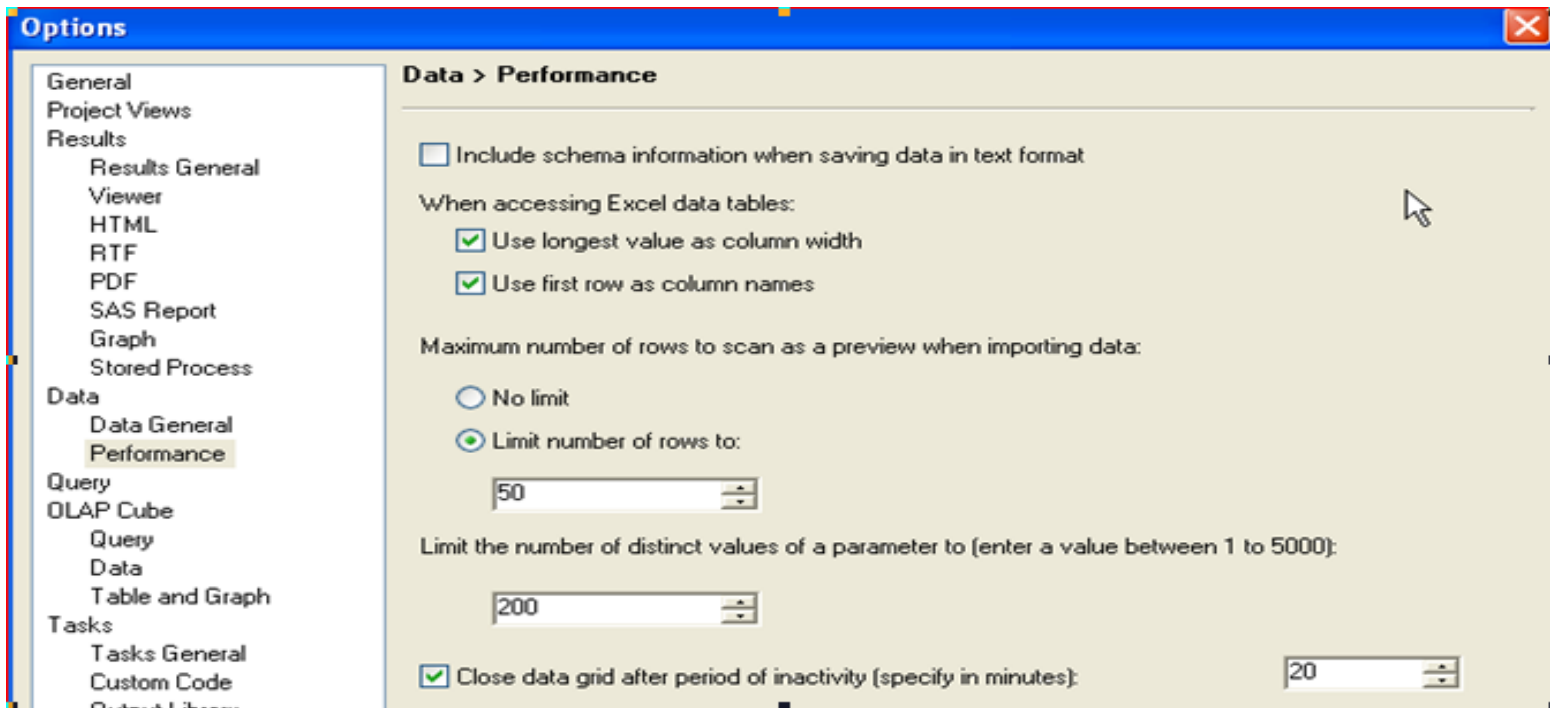


SAS Enterprise Guide Options: Efficiency and Analysis

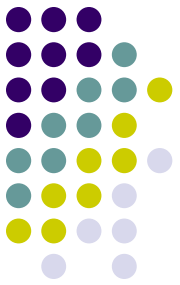


- Maximum number of rows to scan as a preview when importing data

Tools->Options->Data-> Performance



SAS Enterprise Guide Options: Efficiency and Analysis



- SAS procedure settings

Tools->Options->Tasks-> Tasks General

SAS procedure settings

Use PROC SQL instead of PROC SORT for sorting in tasks

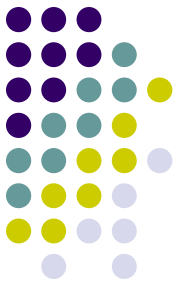
Include SAS procedure titles in results

Filter unused variables:

Auto

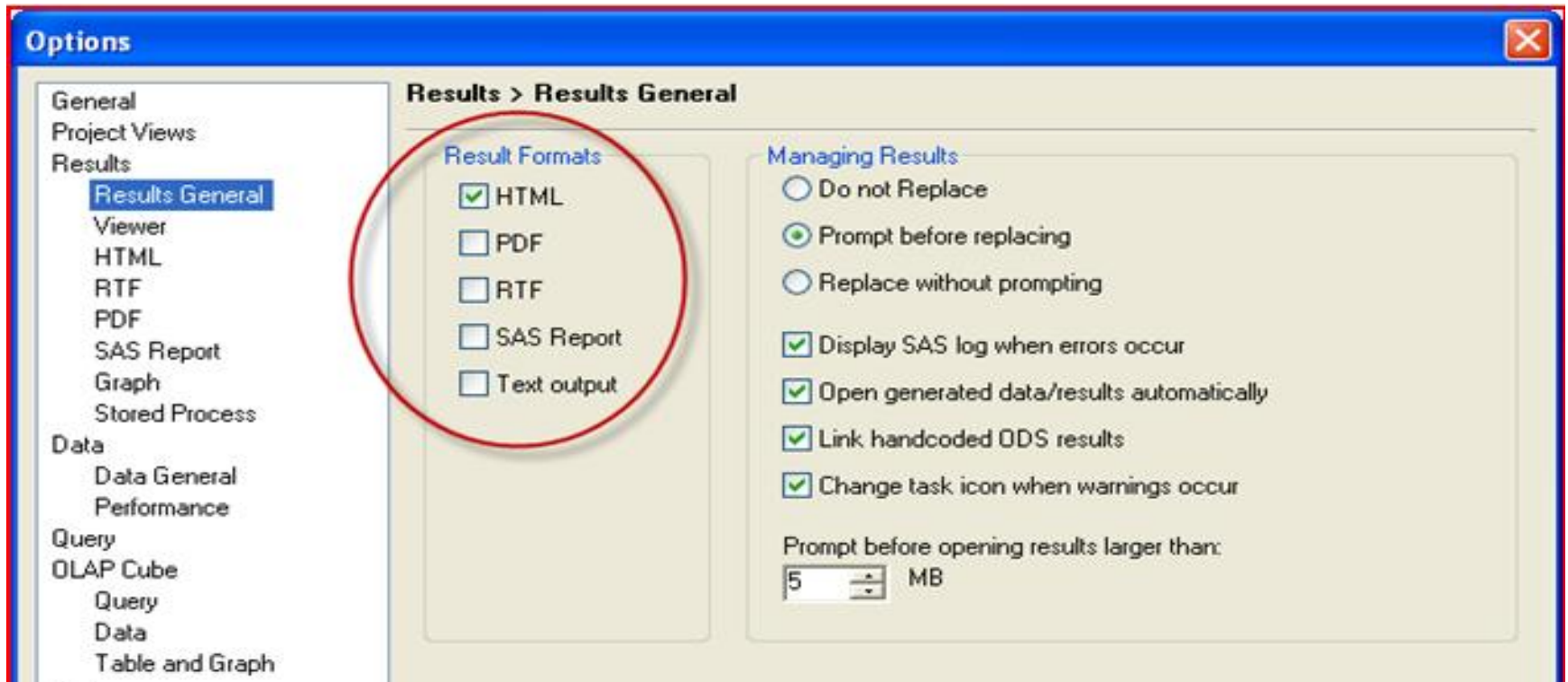


SAS Enterprise Guide Options: Reporting

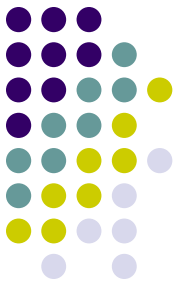


- Result formats

Tools->Options->Results-> Results General

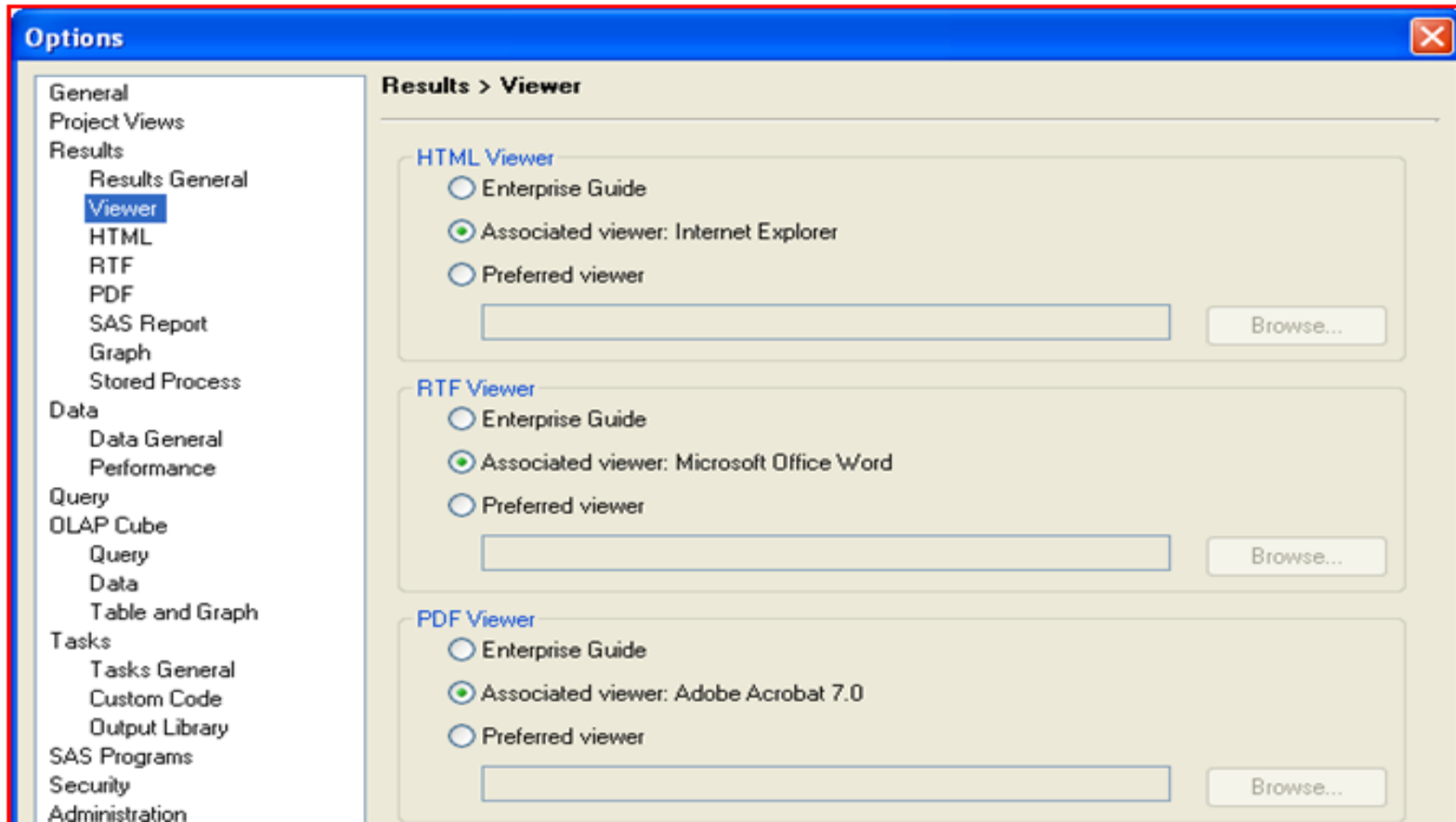


SAS Enterprise Guide Options: Reporting

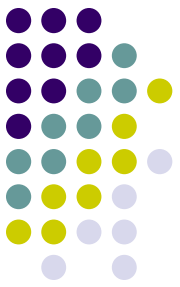


- Results viewer

Tools->Options->Results ->Viewer

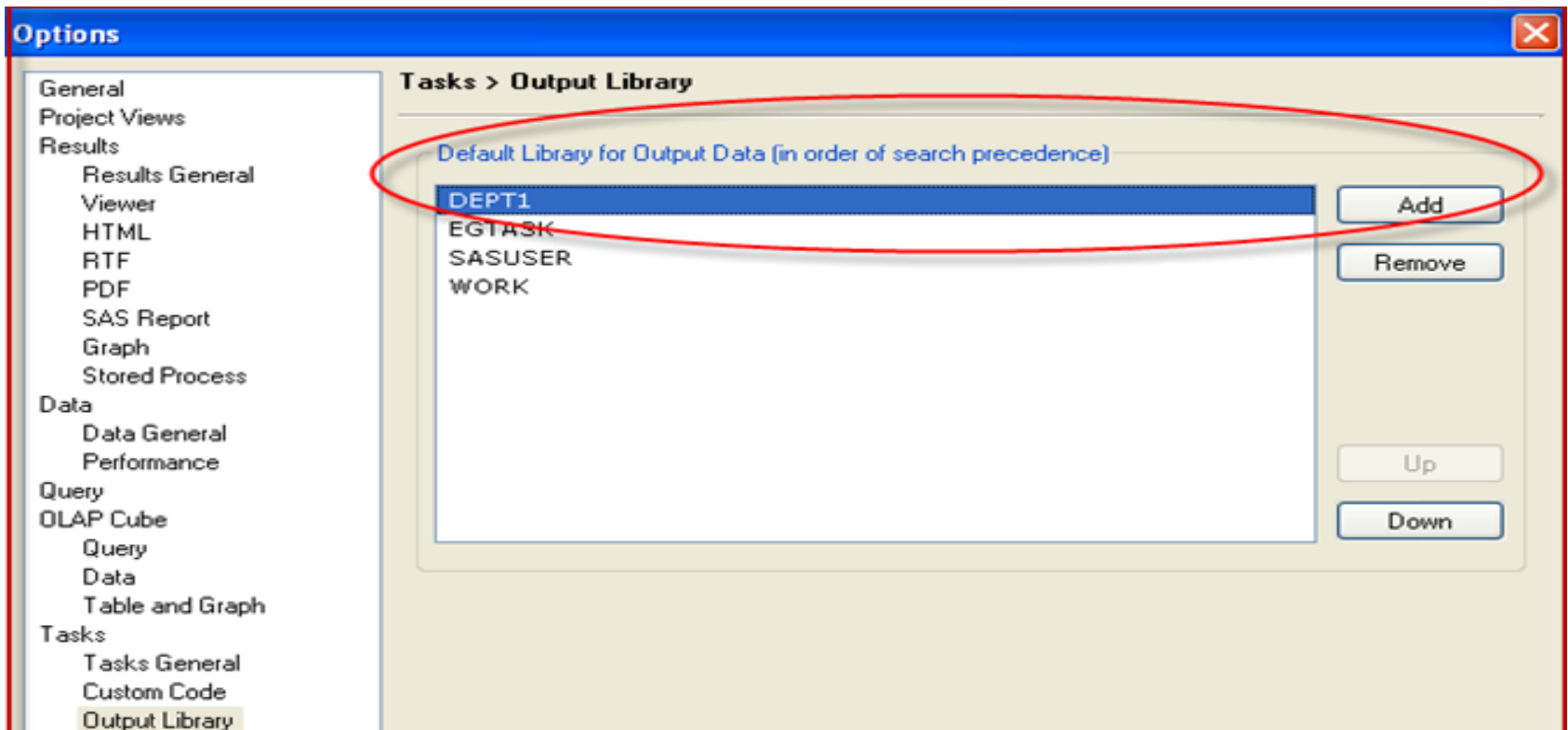


SAS Enterprise Guide Options: Reporting

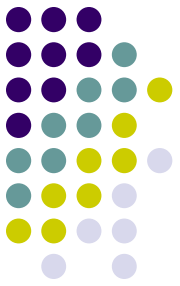


- Default Library for Output Data

Tools->Options->Tasks-> Output Library

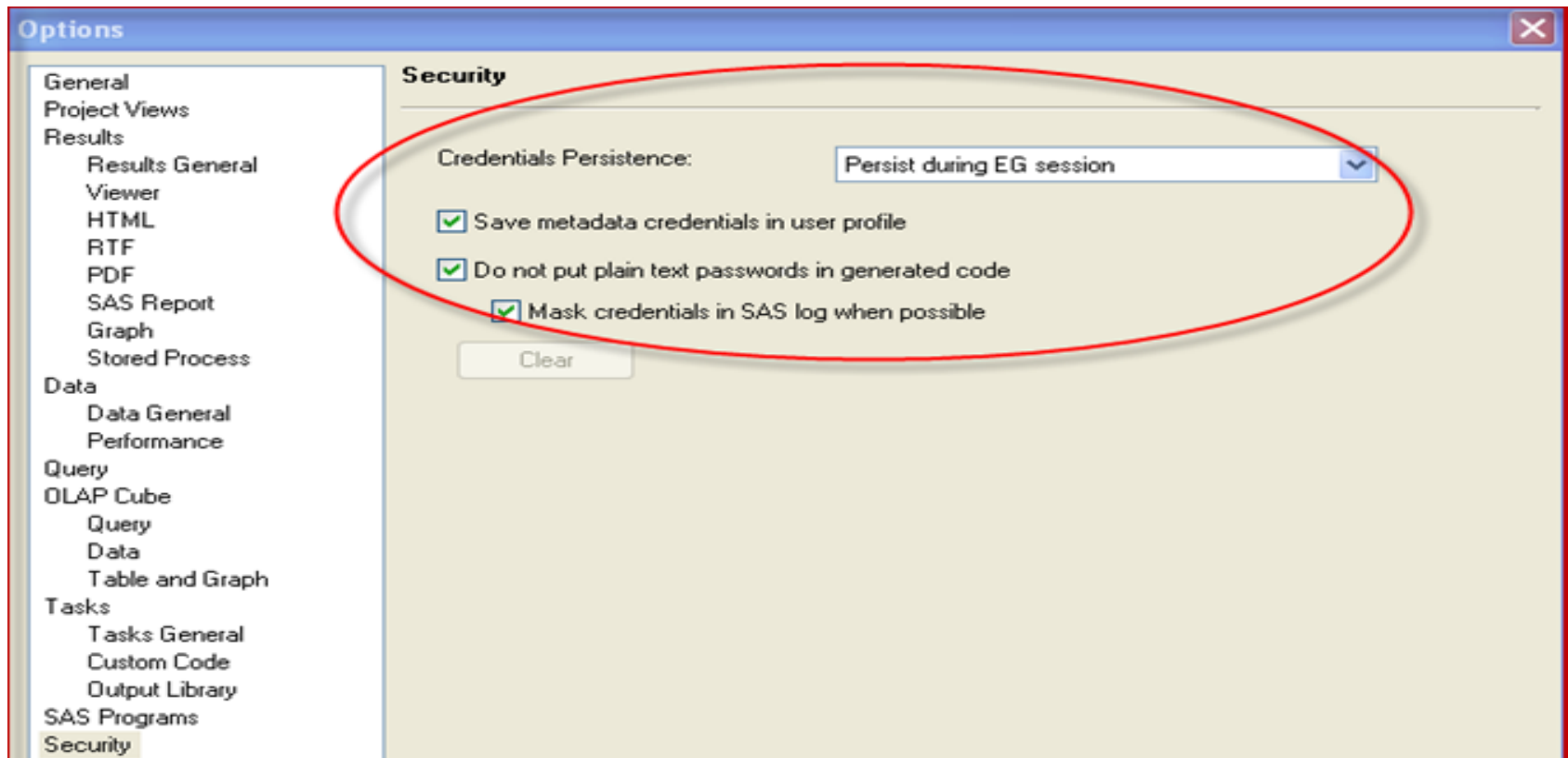


SAS Enterprise Guide Options: Security

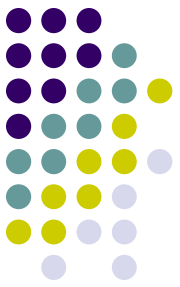


- Credentials Persistence

Tools->Options->Security



SAS Enterprise Guide Options: Administration



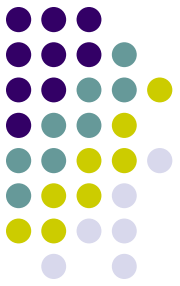
- Repository and Server

Tools->Options->Administration-> Repository and Server

The screenshot shows the 'Options' dialog box with the 'Administration > Repository and Server' section selected. The 'Repository' dropdown menu is set to 'PROD'. The 'Default SAS server' is 'SASMain'. A red oval highlights the 'Repository' dropdown, the 'New...' button, and the 'Manage...' button. Below this, a table lists the SAS servers available in the repository.

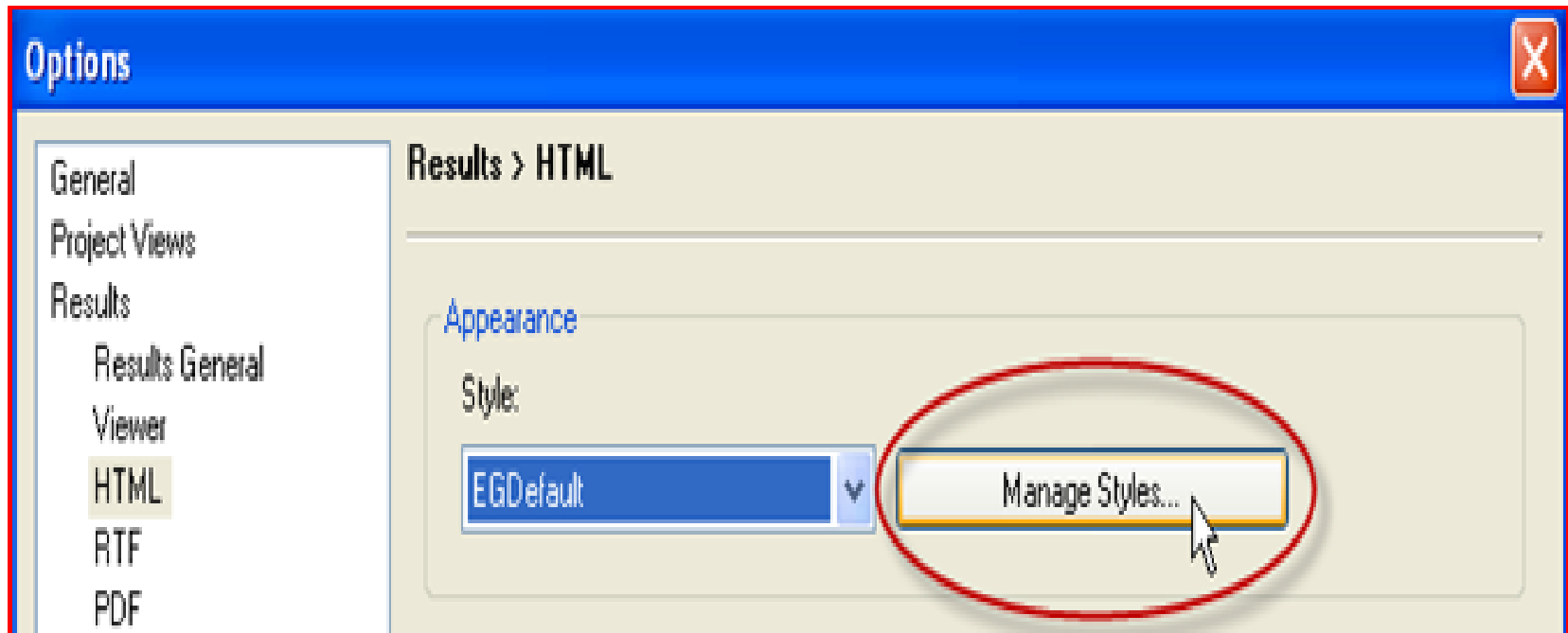
SAS Server	Description
Local	The SAS server on your machine
SASApp1	
SASFore	
SASMain	

SAS Enterprise Guide Options: Visualization

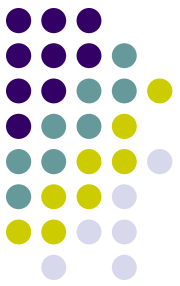


- Results Appearance

Tools->Options->Results-> HTML

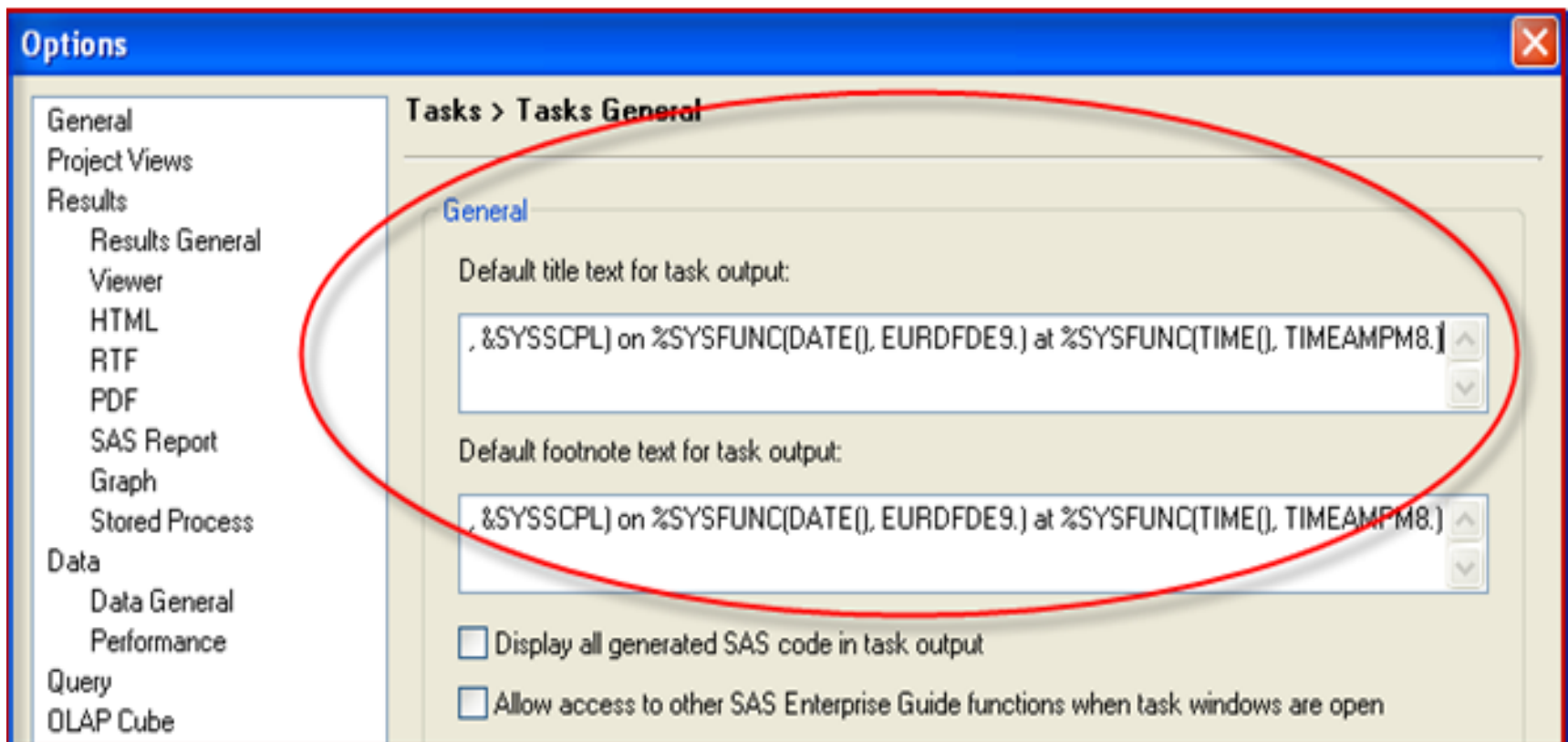


SAS Enterprise Guide Options: Visualization

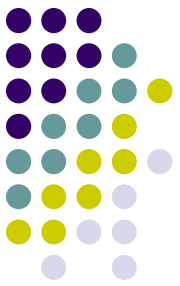


- Default Titles and Footnotes

Tools->Options->Tasks-> Tasks General

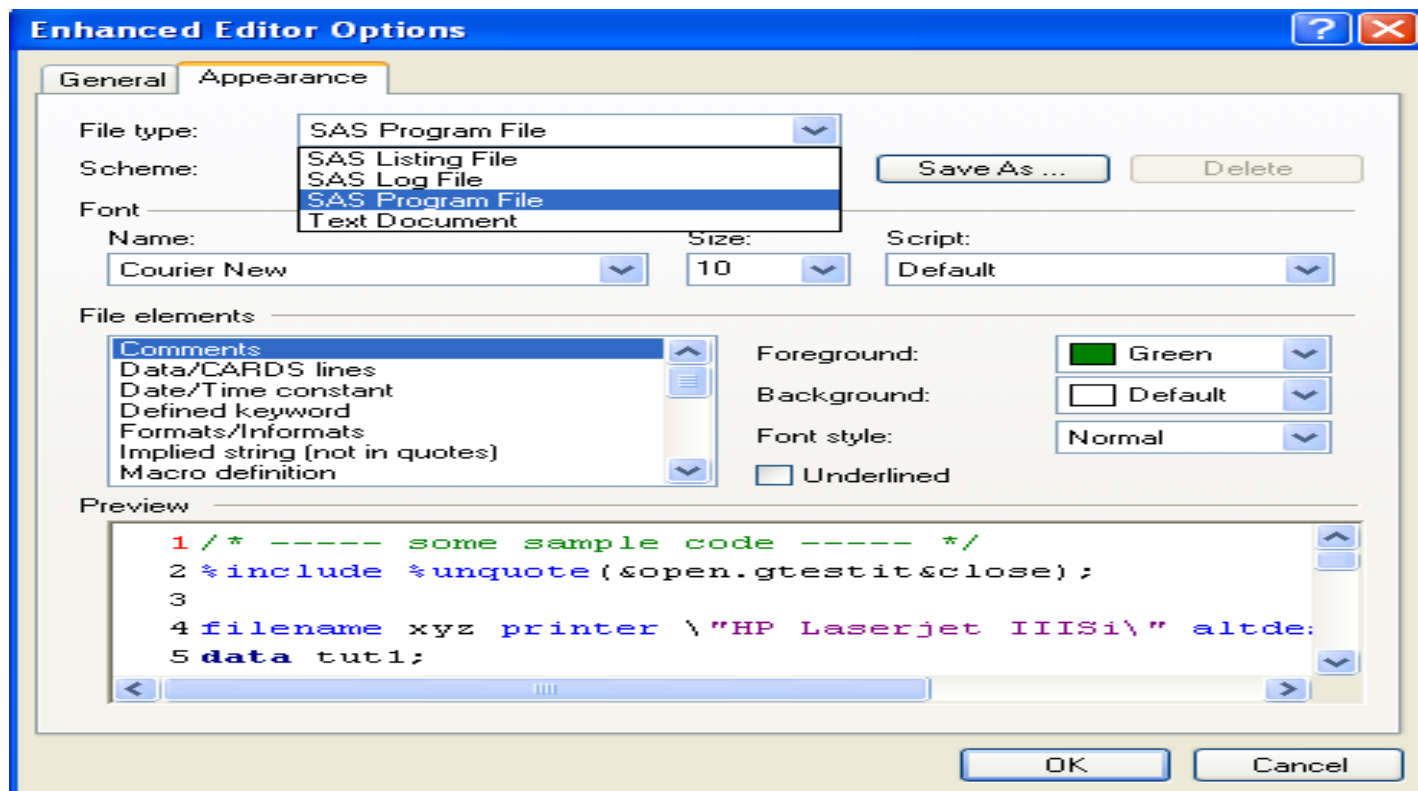


SAS Enterprise Guide Options: Visualization

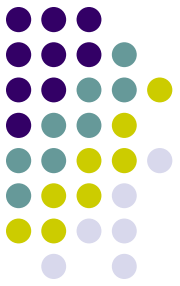


- SAS Program Enhanced Editor Options

Tools->Options->SAS programs->Editor Options

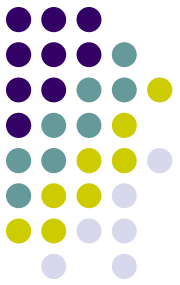


SAS Enterprise Guide Options: Conclusion



- Institute uniform set up
 - Set organizational standards
- Increase productivity
 - Make decisions based on unique user situations
- Minimize new user frustrations
 - First impressions matter the most

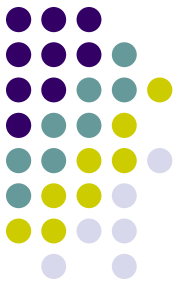
SAS Enterprise Guide Options: The Legal Stuff



This presentation is provided to you as a compilation of helpful information, and is not intended to be complete or exhaustive. It is based upon information gained during the use of the SAS Enterprise Guide by the authors. SAS Enterprise Guide is a licensed product of SAS Institute Inc. (the “Company”). The Company and all other SAS Institute Inc. product or service names are registered trademarks or servicemarks of the Company in the USA and other countries. ® indicates USA registration. The Company is the definitive source for information related to the SAS Enterprise Guide.

This presentation may not meet all of your business needs; please see the SAS Guide and other documents for your details.

SAS Enterprise Guide Options: Contact Information



Susan Jumper

717-302-2213

susan.jumper@highmark.com

Harsha Kotian

717-302-3108

harsha.kotian@highmark.com

SAS Enterprise Guide Options: Questions??

