



EG, Statistics & Clustering

Laurent Josso

laurent.josso@rbc.com

TASS-I

June 3rd, 2011



Meera's Slide - #1

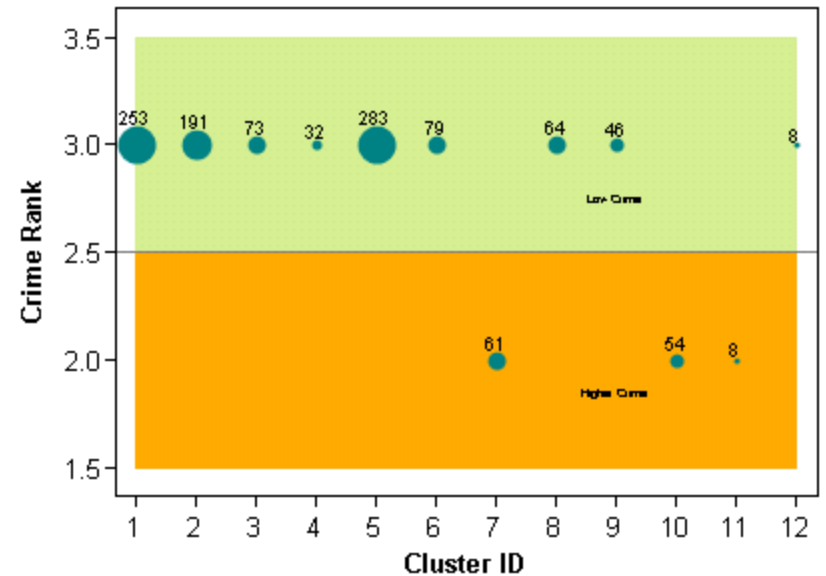
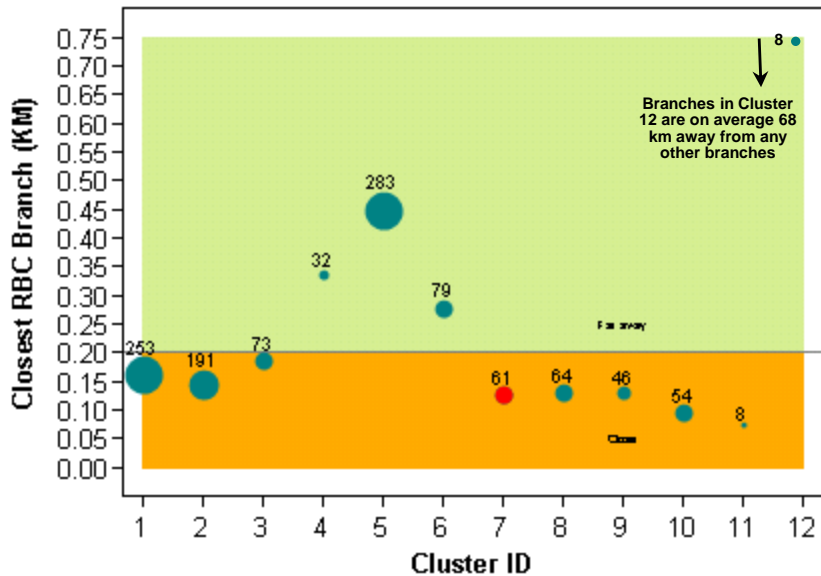
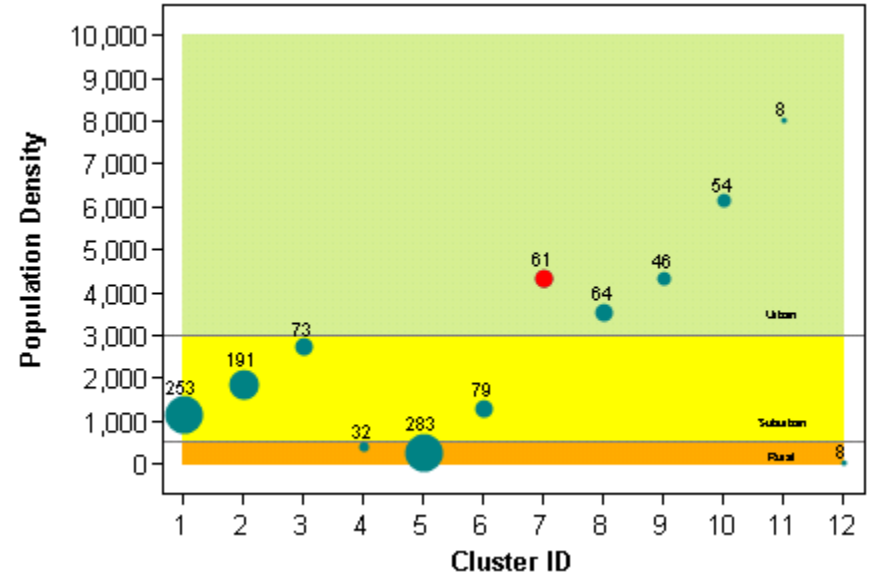
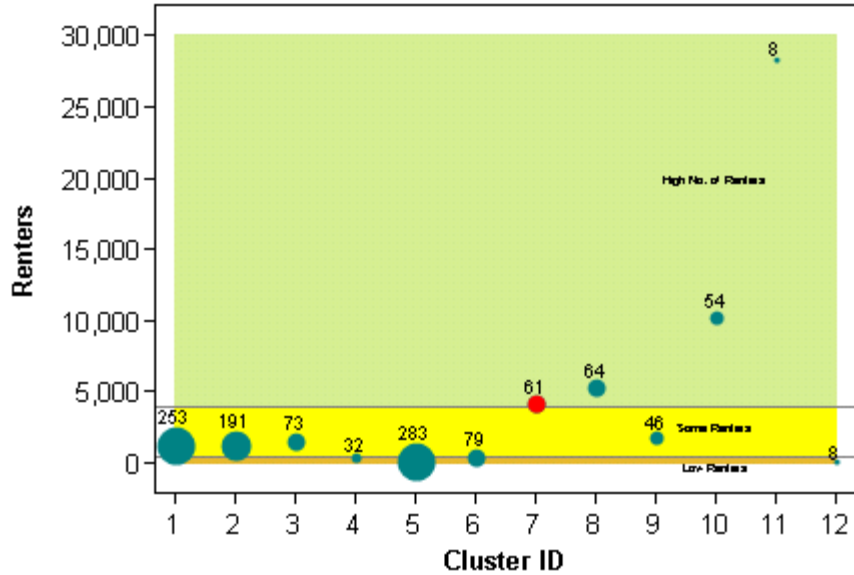




Table SASHELP.SHOES

- For the example the table 'SHOES' will be used. It gives by geographic area, subsidiary and product:
 - Sales
 - Inventory
 - Returns
 - Count of Stores

SHOES ▾

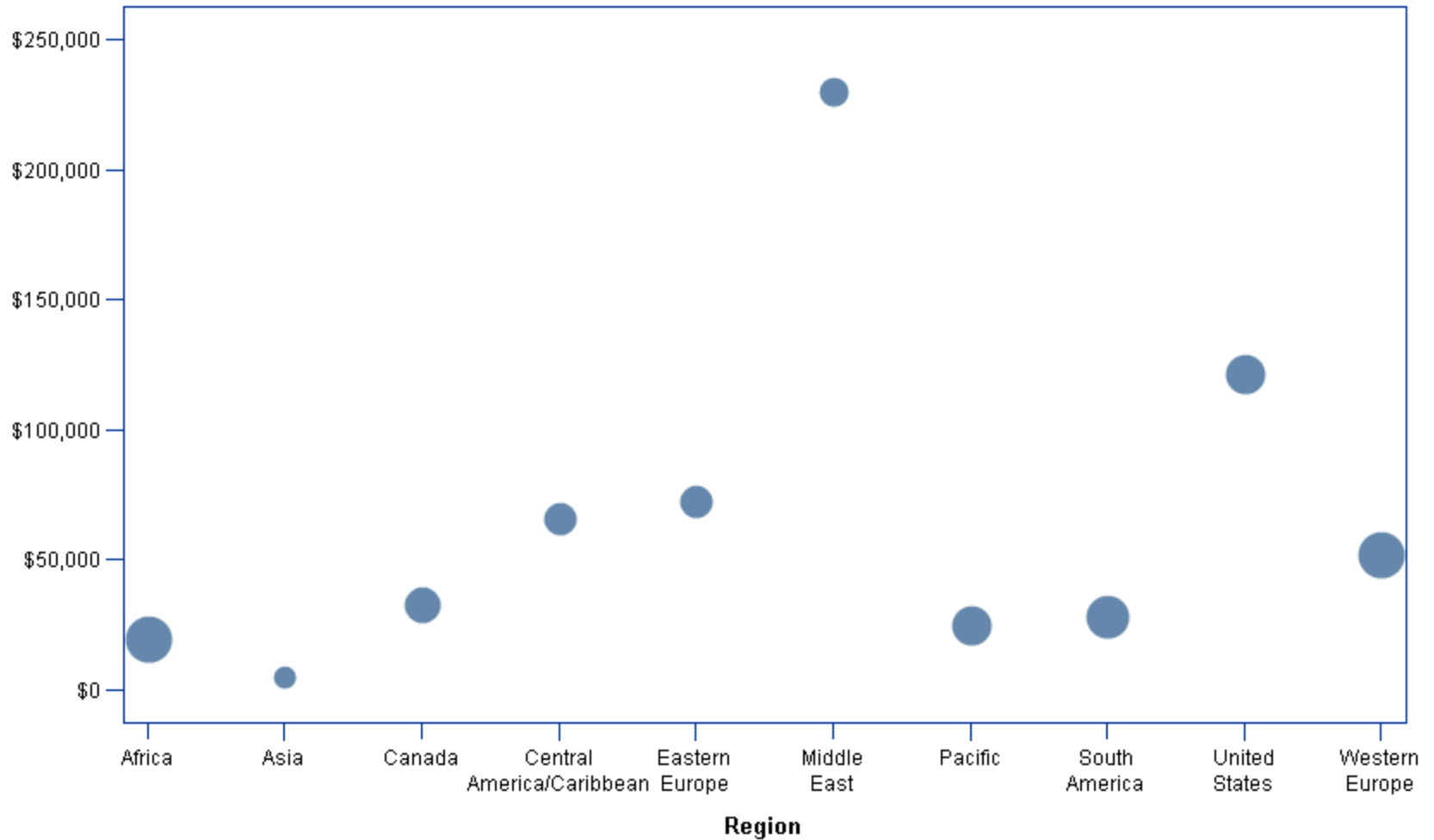
Filter and Sort | Query Builder | Data ▾ Describe ▾ Graph ▾ Analyze ▾ | Export ▾ Send To ▾ |

	Region	Product	Subsidiary	Stores	Sales	Inventory	Returns	
1	Africa	Boot	Addis Ababa	12	\$29,761	\$191,821	\$769	
2	Africa	Men's Casual	Addis Ababa	4	\$67,242	\$118,036	\$2,284	
3	Africa	Men's Dress	Addis Ababa	7	\$76,793	\$136,273	\$2,433	
4	Africa	Sandal	Addis Ababa	10	\$62,819	\$204,284	\$1,861	
5	Africa	Slipper	Addis Ababa	14	\$68,641	\$279,795	\$1,771	
6	Africa	Sport Shoe	Addis Ababa	Addis Ababa	4	\$1,690	\$16,634	\$79
7	Africa	Women's Casual	Addis Ababa	2	\$51,541	\$98,641	\$940	
8	Africa	Women's Dress	Addis Ababa	12	\$108,942	\$311,017	\$3,233	
9	Africa	Boot	Algiers	21	\$21,297	\$73,737	\$710	
10	Africa	Men's Casual	Algiers	4	\$63,206	\$100,982	\$2,221	
11	Africa	Men's Dress	Algiers	13	\$123,743	\$428,575	\$3,621	
12	Africa	Sandal	Algiers	25	\$29,198	\$84,447	\$1,530	
13	Africa	Slipper	Algiers	17	\$64,891	\$248,198	\$1,823	
14	Africa	Sport Shoe	Algiers	9	\$2,617	\$9,372	\$168	
15	Africa	Women's Dress	Algiers	12	\$90,648	\$266,805	\$2,690	
16	Africa	Boot	Cairo	20	\$4,846	\$18,965	\$229	
17	Africa	Men's Casual	Cairo	25	\$360,209	\$1,063,251	\$9,424	

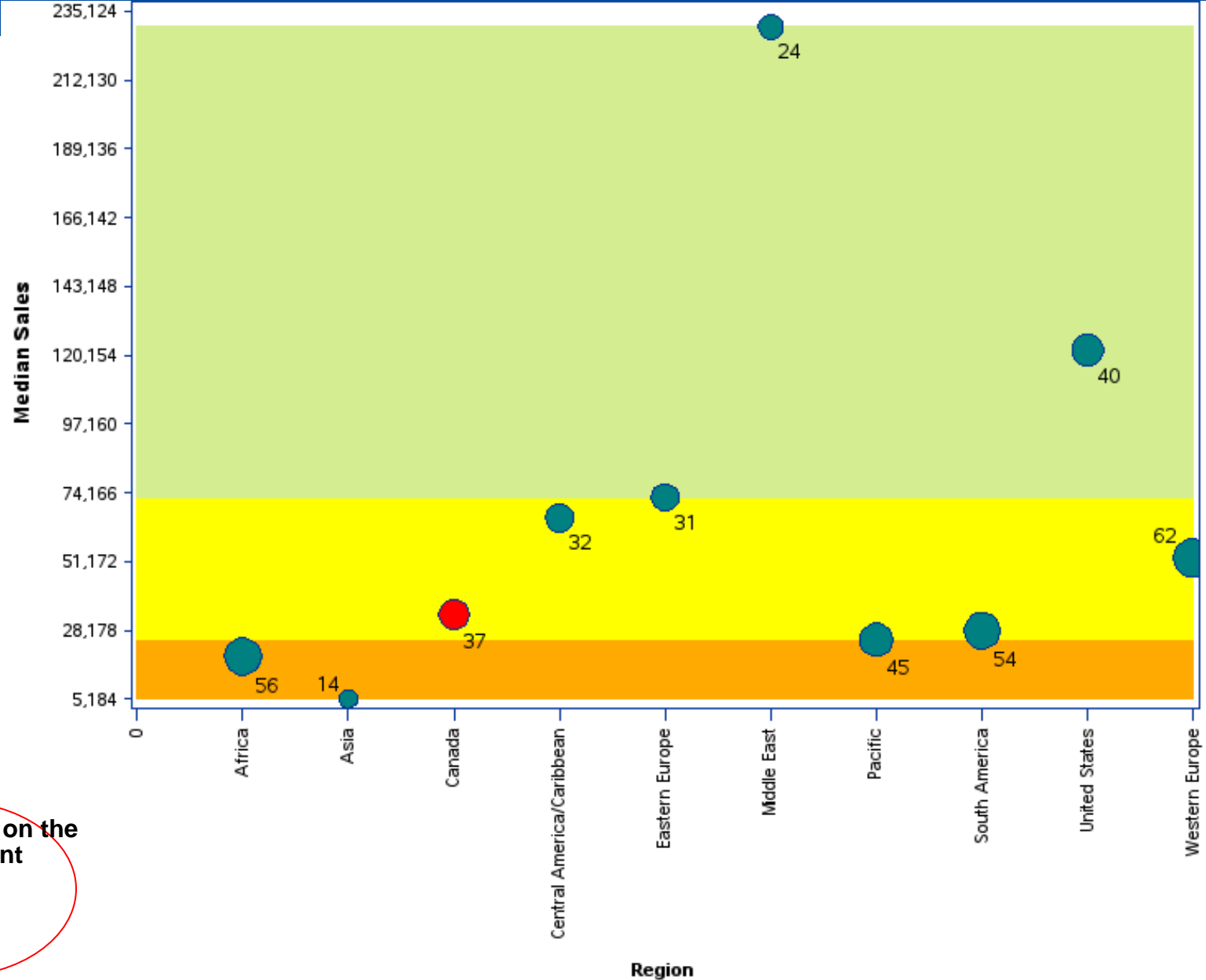


The PowerPoint and Manual Way

Total Sales



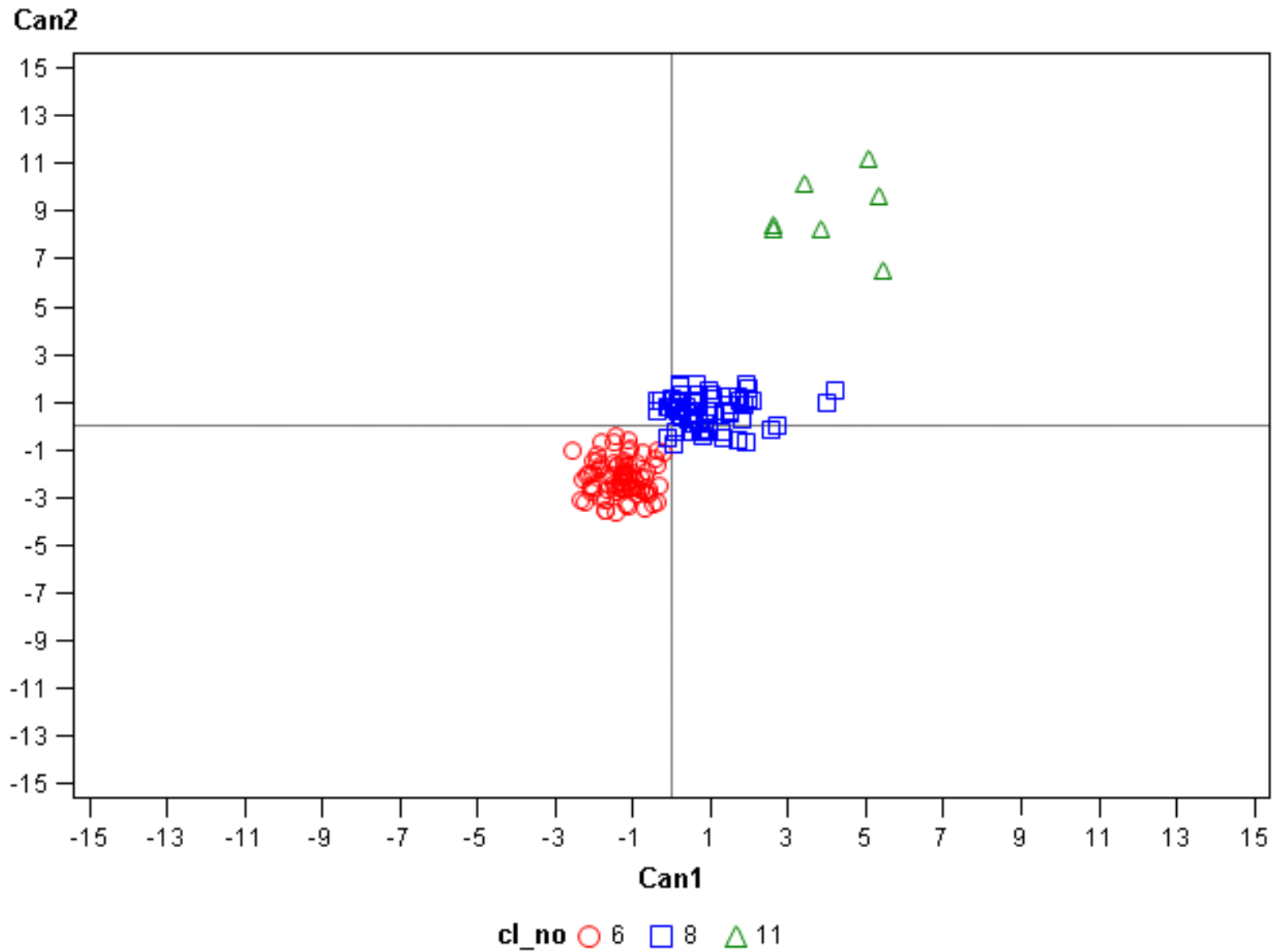
The Annotate and Automated Way



Double click on the document



Quartiles





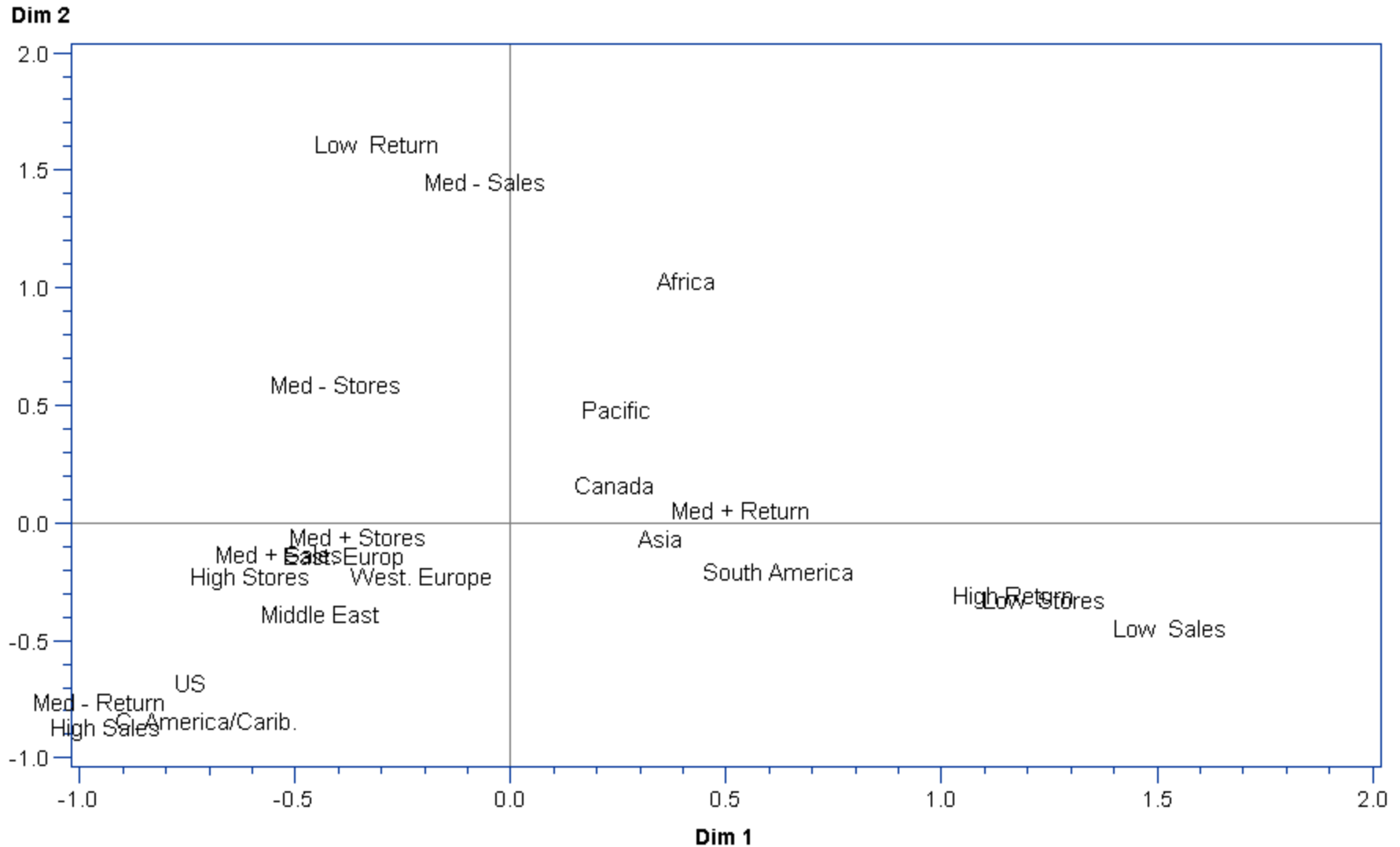
Multiple Correspondence Analysis

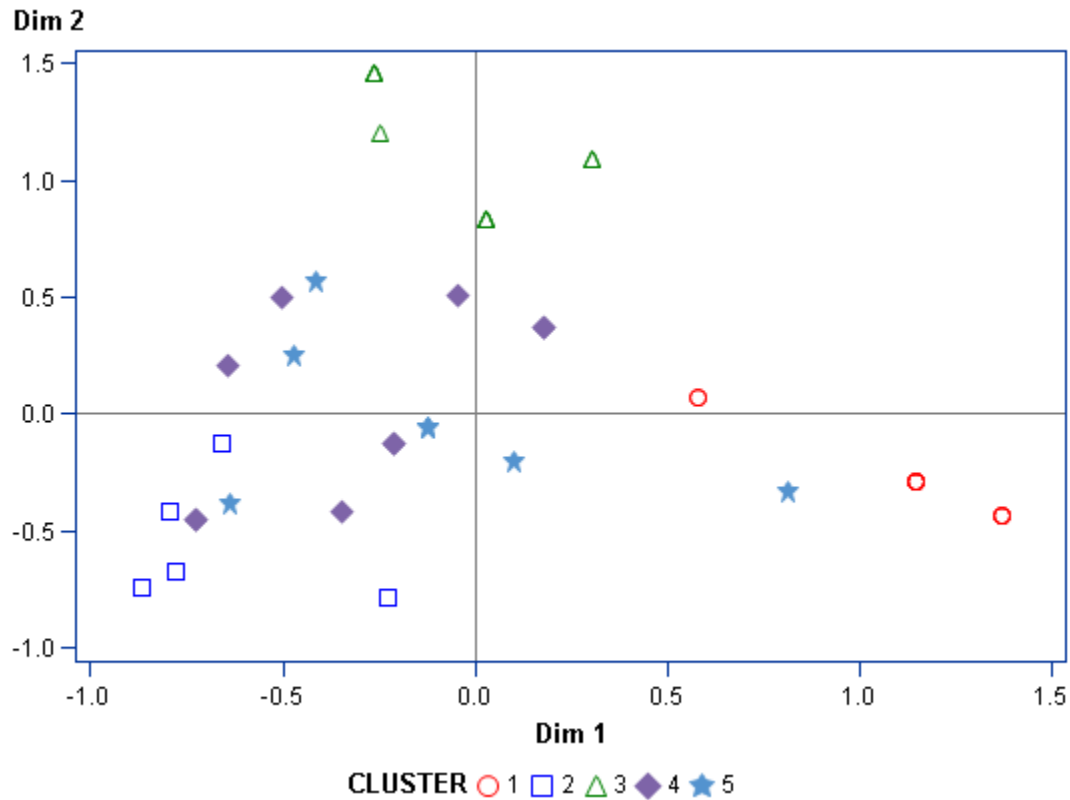
In addition to the principal components analysis, correspondence analysis and multiple correspondence analysis can also be used to summarize large table of information.

- A method to analyze the relationships among categorical variables.
- Quantitative variables can be also used by recoding them into nominal variables



Multiple Correspondence Analysis Variables Plot





Double click on the document



Cluster Plot

Some links about

SAS/Graph, Annotate and colors

http://support.sas.com/rnd/base/ods/templateFAQ/Template_colors.html

<http://the-light.com/colclick.html>

<http://www.nesug.org/Proceedings/nesug97/infviz/mendelso.pdf>

<http://support.sas.com/documentation/cdl/en/graphref/63022/HTML/default/viewer.htm#gplot-plot.htm>

Multiple Correspondence Analysis

http://support.sas.com/documentation/cdl/en/statug/63033/HTML/default/viewer.htm#corresp_toc.htm

On the reference page, SAS provides the most relevant ones about the theory behind the correspondence analysis

(http://support.sas.com/documentation/cdl/en/statug/63033/HTML/default/viewer.htm#statug_corresp_sect028.htm)

And many more on the web!