



EG 4.2 Custom Add-In Create User Formats

TASS, September 17, 2010

**THE
POWER
TO KNOW®**

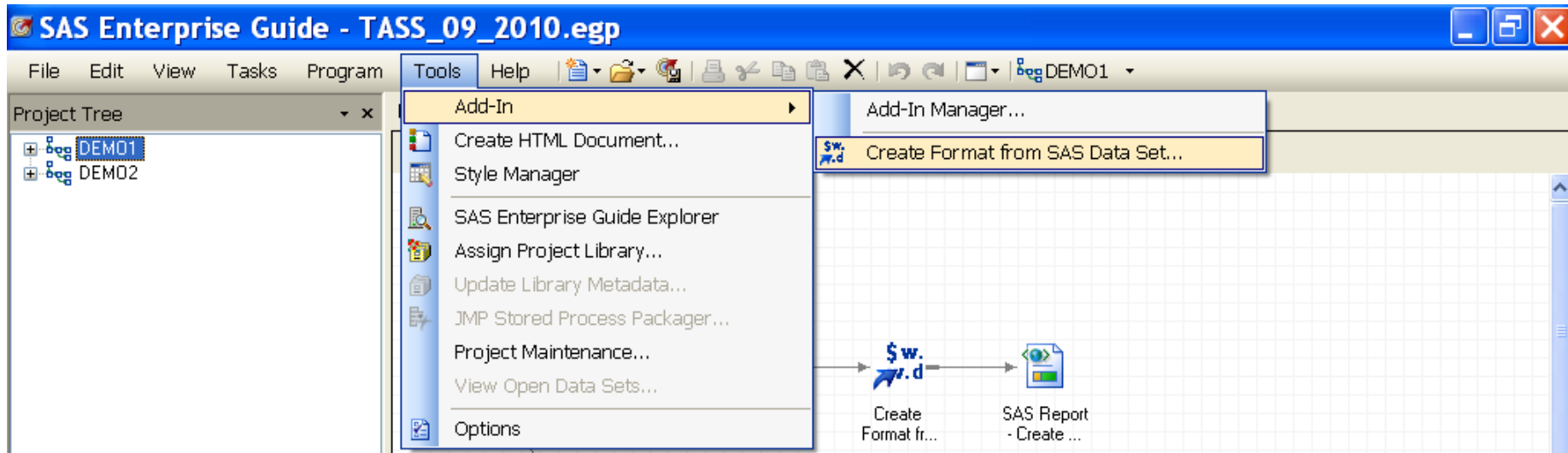
Judy Orr Lawrence, SAS Instructor

Remember life before on-line check-in...



...manual process, waiting in-line just to get a boarding pass

Creating User-Defined Formats just got easier...



Formats re-code data values...

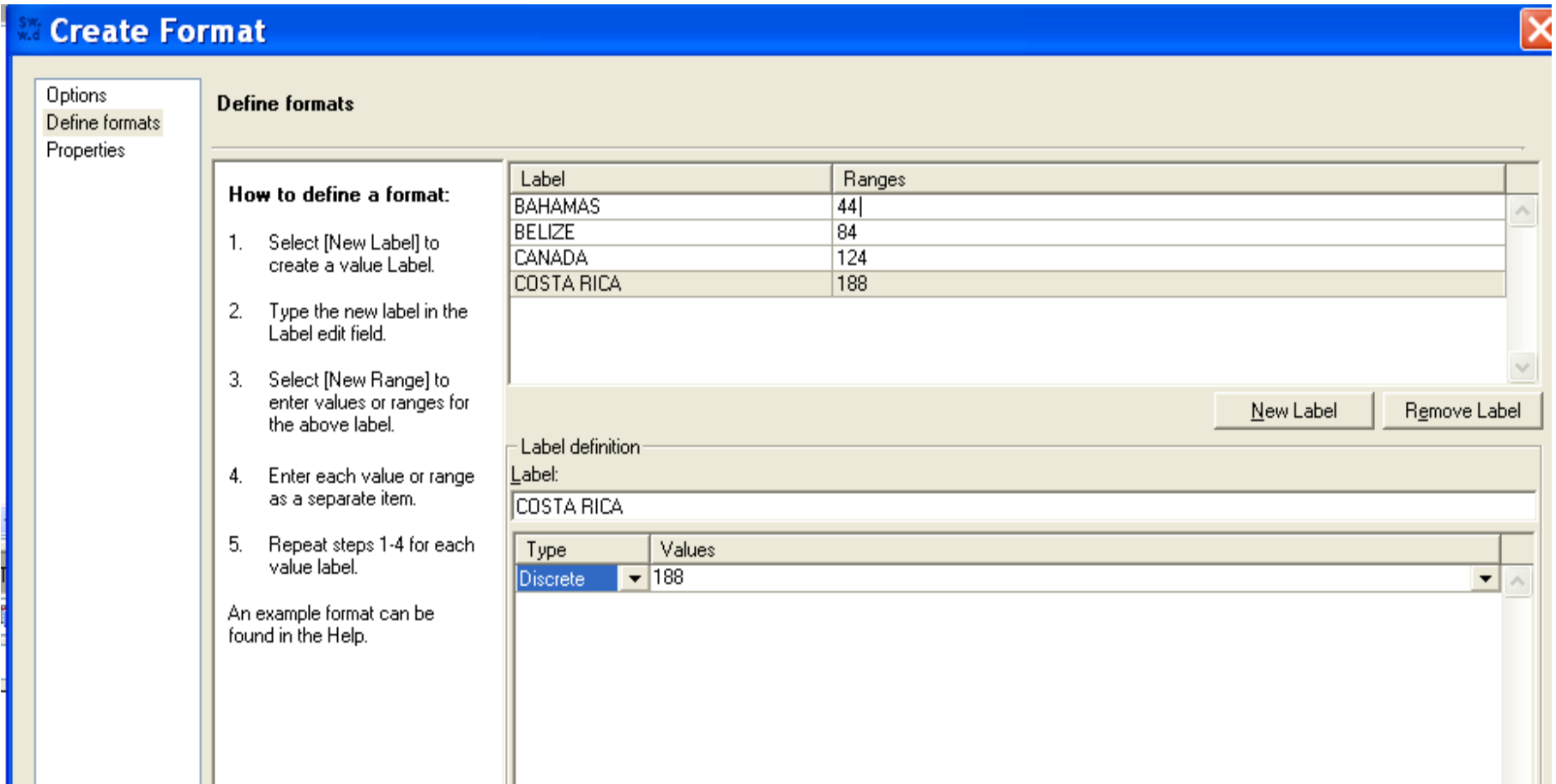
Population Summary

Region	ISO Country Number: 900+ Undefined	Population (2005)	Population Annual Growth Rate Percentage (1995)
AFR	012	32,853,798	
	024	15,941,392	
	072	1,764,926	
	108	7,547,515	
	120	16,321,863	
	132	506,807	
	140	4,037,747	
	148	9,748,931	
	174	797,902	
	178	3,998,904	
	180	57,548,744	
	204	8,438,853	
	232	4,401,357	
	226	503,519	
	231	77,430,702	
	266	1,383,841	
	270	1,517,079	
	288	22,112,805	
	324	9,402,098	
	384	18,153,867	
	404	34,255,722	
	407	4,384,710	

Population Summary

Region	ISO Country Number: 900+ Undefined	Population (2005)	Population Annual Growth Rate Percentage (1995)
AFR	ALGERIA	32,853,798	
	ANGOLA	15,941,392	
	BOTSWANA	1,764,926	
	BURUNDI	7,547,515	
	CAMEROON	16,321,863	
	CAPE VERDE	506,807	
	CENTRAL AFRICAN REP.	4,037,747	
	CHAD	9,748,931	
	COMOROS	797,902	
	CONGO	3,998,904	
	ZAIRE	57,548,744	
	BENIN	8,438,853	
	ERITREA	4,401,357	
	EQUATORIAL GUINEA	503,519	
	ETHIOPIA	77,430,702	
	GABON	1,383,841	
	GAMBIA	1,517,079	
	GHANA	22,112,805	
	GUINEA	9,402,098	
	IVORY COAST	18,153,867	
	KENYA	34,255,722	
	LESOTHO	4,384,710	

Create Format Task is great for short definitions...



Options
Define formats
Properties

Define formats

How to define a format:

1. Select [New Label] to create a value Label.
2. Type the new label in the Label edit field.
3. Select [New Range] to enter values or ranges for the above label.
4. Enter each value or range as a separate item.
5. Repeat steps 1-4 for each value label.

An example format can be found in the Help.

Label	Ranges
BAHAMAS	44
BELIZE	84
CANADA	124
COSTA RICA	188

New Label Remove Label

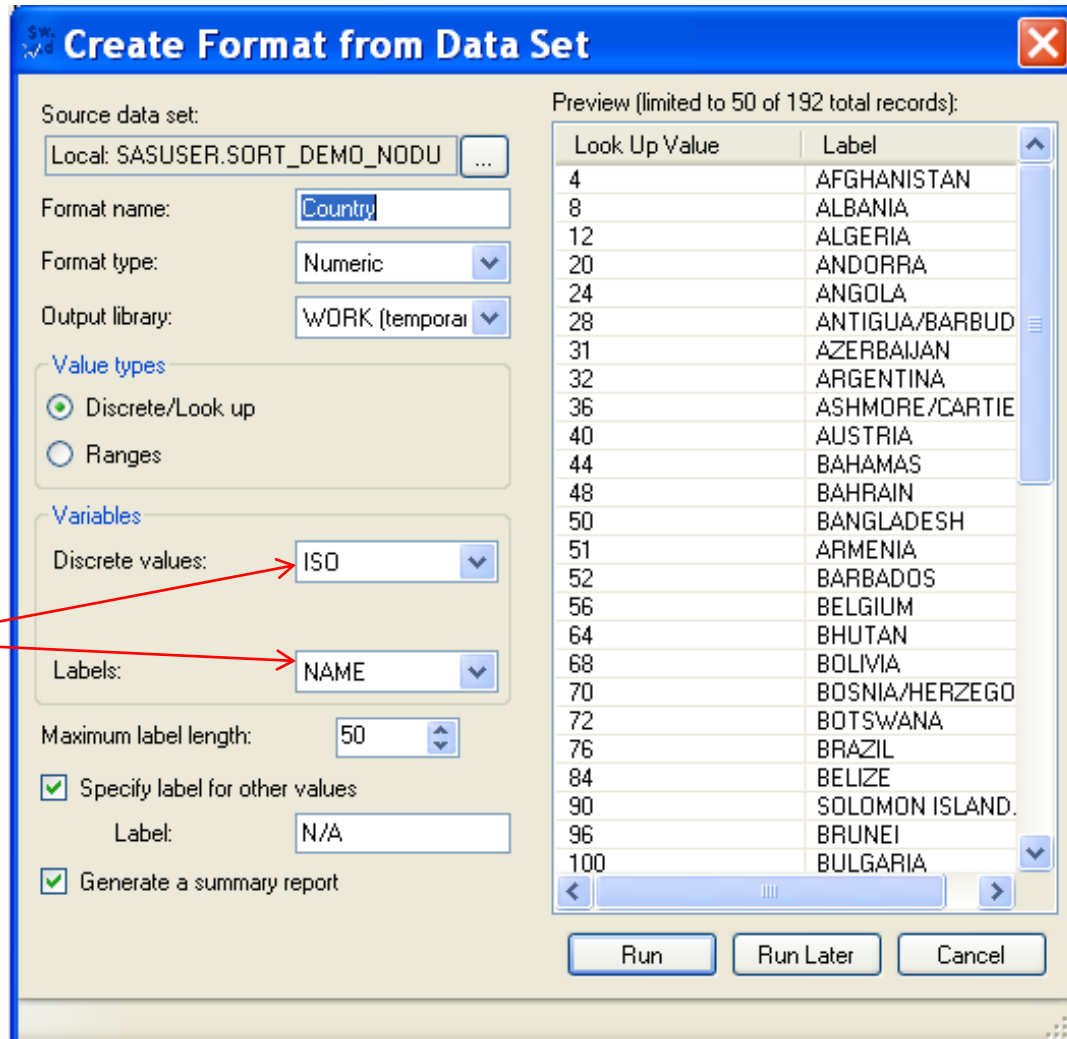
Label definition

Label:
COSTA RICA

Type	Values
Discrete	188

...but tedious for longer lists

Create Formats from a Data Set with the Custom Add-In



Source data set: Local: SASUSER.SORT_DEMO_NODU ...

Format name: Country

Format type: Numeric

Output library: WORK (temporary)

Value types
 Discrete/Look up
 Ranges

Variables
 Discrete values: ISO
 Labels: NAME

Maximum label length: 50

Specify label for other values
 Label: N/A

Generate a summary report

Preview (limited to 50 of 192 total records):

Look Up Value	Label
4	AFGHANISTAN
8	ALBANIA
12	ALGERIA
20	ANDORRA
24	ANGOLA
28	ANTIGUA/BARBUD
31	AZERBAIJAN
32	ARGENTINA
36	ASHMORE/CARTIE
40	AUSTRIA
44	BAHAMAS
48	BAHRAIN
50	BANGLADESH
51	ARMENIA
52	BARBADOS
56	BELGIUM
64	BHUTAN
68	BOLIVIA
70	BOSNIA/HERZEGO
72	BOTSWANA
76	BRAZIL
84	BELIZE
90	SOLOMON ISLAND.
96	BRUNEI
100	BULGARIA

Run Run Later Cancel

**Values and labels
 selected from
 input data set**

Eliminates manual data entry

DEMO

Create Formats from Data Set Custom Add-In

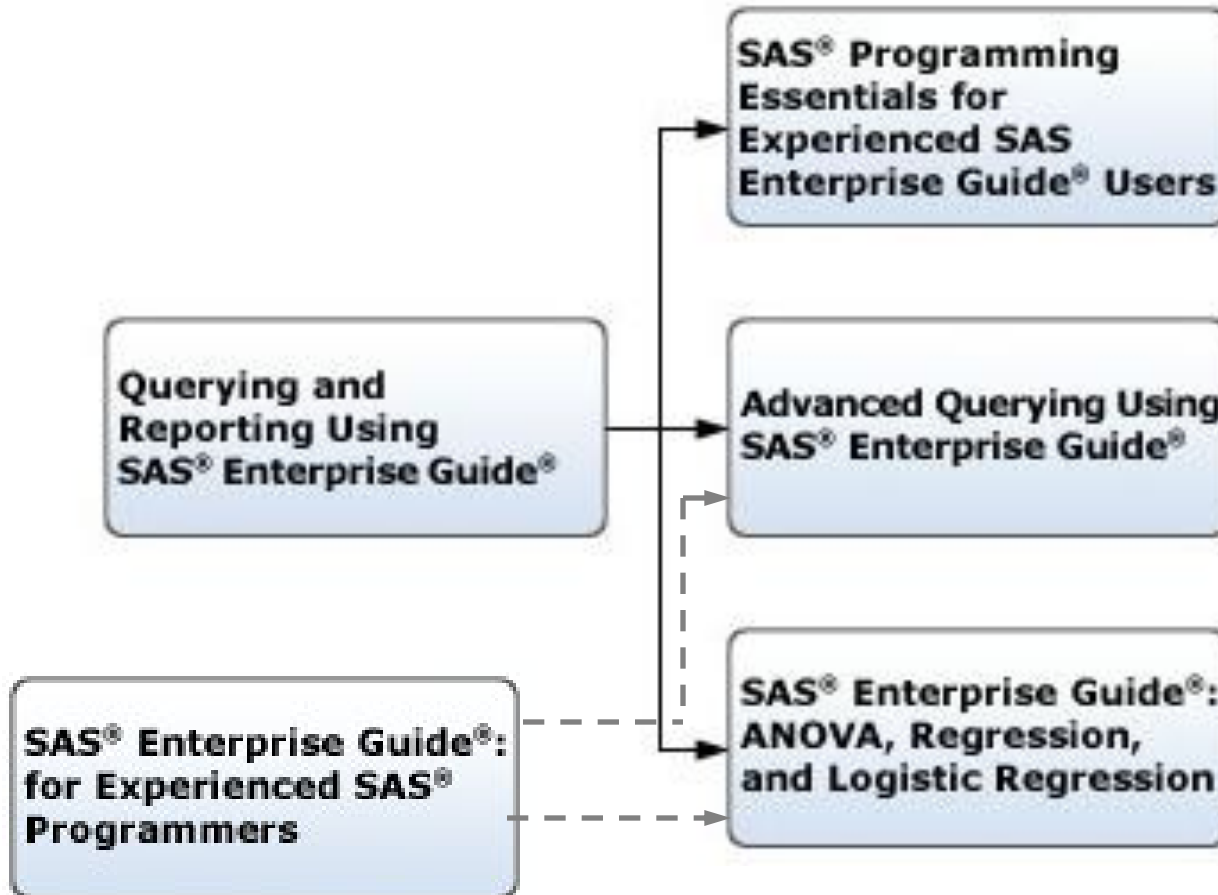
- Cannot be used with prior versions of Enterprise Guide
- Uses the Data Step to create a control data set and uses Proc Format code with CNTLIN option

Where do I get this Add-in ?

- Provided with the Querying and Reporting Using SAS Enterprise Guide course
- Download from here
<http://blogs.sas.com/sasdummy/index.php?/archives/95-Creating-a-SAS-format-from-a-data-set.html>

Enterprise Guide Learning Path

For SAS Enterprise Guide Users



Do you have experience using SAS Enterprise Guide and would like an introduction to writing and modifying SAS programs?

Thank You!

