

# Best of the SAS Communities

---

Some Handy Tips I Learned in the Enterprise  
Guide Discussion Forums



THE  
POWER  
TO KNOW®

# My Background

 THE  
POWER  
TO KNOW.

 THE  
POWER  
TO KNOW.



## What's New in SAS Enterprise Guide 4.2

Matt Malczewski  
Customer Forums Program Manager, SAS  
Canada

THE  
POWER  
TO KNOW.®

Copyright © 2008, SAS Institute Inc. All rights reserved.

# A Caveat





Welcome, Guest | [Login](#)

## Communities on SAS

Browse:

### Get Started

1. Review the most recent posts.
2. Login and join a discussion.
3. Update existing subscriptions and watches.
4. Verify your privacy settings.

### Customer e-Newsletter

Receive the latest information for SAS customers in the monthly e-newsletter *SAS Tech Report*.  
[View an issue](#) | [Subscribe now](#)

### Communities and Forums

All of your favorite discussion forums are available in this new location. You will need to reset your watches and subscriptions to keep up with new posts and announcements.

#### SAS Programming & Reporting

- » [SAS Procedures](#)
- » [SAS Statistical Procedures](#)
- » [SAS Macro Facility, Data Step and SAS Language Elements](#)
- » [ODS and Base Reporting](#)
- » [SAS/GRAPH and ODS Graphics](#)
- » [SAS Enterprise Guide](#)
- » [SAS Web Report Studio](#)
- » [SAS Stored Processes](#)
- » [Integration with Microsoft Office](#)

#### Data Analysis, Statistics, & Research

- » [SAS Statistical Procedures](#)
- » [SAS/ML and SAS/ML Studio](#)
- » [Mathematical Optimization and Operations Research with SAS](#)

### Open a Track with Technical Support

Have an urgent, confidential, or complex SAS question or issue? If your question isn't appropriate for public discussion, [open a problem track](#) with SAS Technical Support.

### Top Participants

	Cynthia@sas	████████
	art297	████████
	sbb	████████
	Ksham	████████



Welcome, Guest | [Login](#)

Communities on SAS > SAS Enterprise Guide

# SAS Enterprise Guide

Overview | All Content (2,012) | **Discussions (2,012)** | Documents (0) | Set as default tab

## Recent Discussions in the SAS Enterprise Guide Community

- [\( PC SAS \)DDE alternatives in Enterprise Guide?](#)  
1 hour ago | by Stephane
- [Re: SAS Code - Embedded vs. Linked](#)  
1 hour ago | by Stephane
- [deleting duplicate rows from dataset](#)  
2 hours ago | by coba
- [macro variable \\_EGuserID is gone in the SAS9.3 and EG4.3?](#)  
2 hours ago | by Rickyboy81
- [Export data from SAS EG to Excel](#)  
19 hours ago | by TriciaA
- [some 4.2 eggs that had Excel and Access import nodes that won't work when opened in 4.3](#)  
21 hours ago | by Edie
- [Re: Question on OLAP reporting](#)  
1 day ago | by FrankBoekamp

**Actions**

**Notifications**

[View feeds](#)

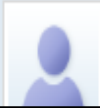
**Posts from "The SAS Dummy"**

Dec 2, 2011  
[Computer Science is not just for basement dwellers](#)

Nov 30, 2011  
[Just-in-time data prep in SAS Enterprise Guide](#)

Nov 22, 2011  
[Inspecting SAS macro variables in](#)

# Tip #1: Sorting



Nov 23, 2011 8:00 AM

## How to sort data in EG List Report?



Cynthia@sas

Nov 24, 2011 10:30 AM (in response to Miron)

**Helpful Answer** Re: How to sort data in EG List Report?

Hi:

Here's the thing I don't understand...what does your ORIGINAL data look like? You posted the report you wanted...and from that, I think that your data looks like this--although I suspect you have more than 3 rows of input data:

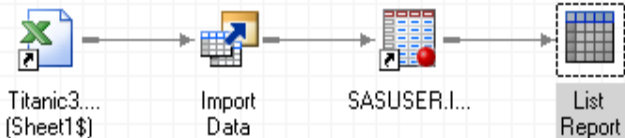
1522 Miron 23.11.11 14323

1523 Miron 08.07.10 12656

1524 Miron 06.10.09 09788

Where ID 1522 is for 2011 and ID 1523 is for 2010 and ID 1524 is for 2009. If there is a relationship between ID and date, then ordering by ascending order of ID should get you the DESCENDING order by DATE when you create the report. However, on the off chance that the IDs are not connected to the DATE variable, it would probably be better to just order by DESCENDING date value. Do you have duplicate ID numbers? Can one observation of data have the same ID number as another observation? Is your DATE field a character variable (red pyramid symbol) or a numeric field (blue sphere symbol)?

Like (0)



### List Report for Local:SASUSER.IMPW\_0006

2 of 4 Define List

Preview:

pclass	survived	name	age	sex
	(SUM)		(SUM)	

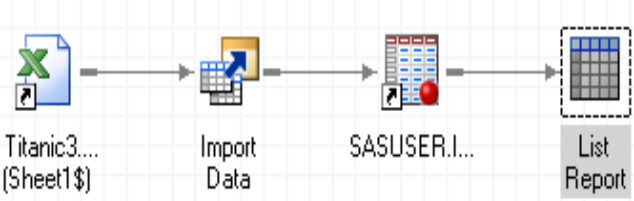
- Duplicate
- Statistic
- Add
- Edit
- Move
- Delete

- Show sum value (SUM)
- Show average value (MEAN)
- Show mode (MODE)
- Show lowest value (MIN)
- Show highest value (MAX)
- Show frequency (N)
- Show % of frequency (PctN)
- Show % of total (PctSum)
- Show range (Range)
- Show median (Median)
- Show missing values (NMiss)
- Show variance (Var)
- Show Std deviation (StdDev)
- Display all values
- Hide repeating values

Add

Edit

<Back Next> Finish Cancel Help



List Report for Local:SASUSER.IMPW\_0006

2 of 4 Define List

sas

Preview:

Add

Edit

Table Properties

Select how the data should be presented:

class	survived (SUM)	name	age	emb

Duplicate

Display type

Add

3rd	0	Abbing, Mr Anthony	42	Southampton
3rd	0	Abbott, Master Eugene Joseph	13	Southampton
3rd	0	Abbott, Mr Rossmore Edward	16	Southampton
3rd	0	Adahl, Mr Mauritz Nils Martin	30	Southampton
3rd	0	Adams, Mr John	26	Southampton
3rd	0	Ahlin, Mrs Johanna Persdotter	40	Southampton
3rd	0	Ahmed, Mr Ali	24	Southampton
3rd	0	Aijo-Nirva, Mr Isak	41	Southampton
3rd	0	Alexander, Mr William	23	Southampton
3rd	0	Alhomaki, Mr Ilmari Rudolf	20	Southampton
3rd	0	Ali, Mr William	25	Southampton

OK Cancel Help

<Back Next> Finish Cancel Help

# Tip #2: Column Length



checkno

Nov 17, 2011 1:51 PM

## EG query builder : character computed columns length

This question has been **Answered**.

Hi all,

in a query, i need to have a constant character variable,  
i need this variable to be \$64 length (preparing it for an append)

in the wizard for creating a new column (calculated="char"), when i change the length value to 64 ,  
i have an error popup : the length value is out of range, it should be between 3 and 8

i tried to get around this by using a cat or repeat ... functions, but a length of 200 is too much  
its a project for non sas specialists so less code is better.

**Correct Answer** by [LinusH](#) on Nov 18, 2011 6:27 AM

The wizard is a bit tricky.  
It seems that the default is numeric output column, which explains the valid range (3-8 bytes).  
If you chose a character format, it will probably work for you.

/Linus

▼ [See the answer in context](#)



Project Tree

- Slide 6a
- Slide 6
- Titanic3.xls
- Import I
- Slide 7
- Slide 8
- Slide 9

Server List

Refresh Disconnect

- Servers
- OLAP Servers
- Private OLAP Servers

### Query Builder for Local:SASUSER.IMPW\_0006

Query name:  Output name:

t1 (IMPW\_0006)

- pclass
- survived
- name
- age
- embarked
- countryorigin
- sex

Select Data | Filter Data | Sort Data

Column Name	Identifier	Summary	Format	Details
Drop a column here to add it to the query.				

Select distinct rows only

Column | Details

New... Edit... Delete

Output name: WORK.QUERY\_FOR\_IMP...

Preview | Tools | Options

Select Data | Filter Data | Sort Data

Column Name	Identifier	Summary
-------------	------------	---------

### Formats

Categories: None, Character, User Defined, All

Formats: \$BASE64w., \$BIDIw., \$BINARYw., \$CHARw., \$CPTDw., \$CPTWDw., \$FREECw., \$FREEw.

Attributes: Overall width: 64 (Min: 1, Max: 32767), Decimal places: 0

Description: characters with blanks

Example: Value: [A][b][C][d][E], Output: [A][b]

OK Cancel

Format: \$CHAR3. Change...

<Back Next Finish Cancel Help

New Compute

3 of 4

Add new computed columns to the

Disconnect Stop

Servers

- OLAP Servers
- Private OLAP Servers



here to add it to the que

a column here to add it to the q

<Back Next Finish Cancel Help

# Tip #3: Adding A Variable With Conditions



Tasha

Jul 8, 2011 9:54 AM

## Add new variable

This question has been **Answered**.

I am new to Enterprise Guide. I am using version 4.2.

I created a project and opened a dataset. Because this dataset is pointing to a another location, I am not able to directly add a new variable to it. I'm assuming this is correct.

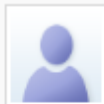
So, I am using Query Builder where I add all the columns and would like to add some variables with conditions.

For example:

```
if column1='a' then order='First';  
else if column1='b' then order='Second';
```

So, I am creating a new variable **order**.

How can I add a new variable (if-then-else statement) to an open dataset in my project?



Doc@Duke

Jul 8, 2011 10:52 AM (in response to Tasha)

**Correct Answer** Add new variable

Tasha,

You can do this with the Query Builder task. It does not modify the original data; rather it builds a new data set or view with the added column.

Click computed column and then select recode. The help should take you from there.

The SAS for Dummies (second edition) covers this and more for EGuide 4.2 and 4.3.

Doc Muhlbaier

Duke

### Specify a Replacement

Replace Values | Replace a Range | Replace Condition

a

◀ | ▶

Add ▾ | Edit ▾ | Delete

With this value:

first

Enclose this value in quotes

OK | Cancel | Help

### New Computed Column

3 of 5 Specify a replacement

Replacement

Replace	With

Add... | Edit... | Delete

Other values

Replace all other values with:

- The current value
- A missing value
- Specify a value:  
 ...

Enclose value in quotes

Column type

- Character
- Numeric

<Back ▾ | Next> | Finish | Cancel | Help

# Tip #4: Assorted EG Management




Aug 27, 2011 5:19 PM

How can I easily change file path?




Sep 1, 2011 4:13 PM (in response to DocStocks)

 **Correct Answer** Re: How can I easily change file path?

Thanks all for the tips, but I do believe they are overkill for my situation. Sometimes we get so steeped in complexity (e.g. PhD preparation), that we forget that easy solutions still do exist. To wit:

Solution: moved both my DropBox folders from each machine's My Documents folder, which have different roots, to c:\. Then I just had to update the PF file paths on one machine and I'm done. I could smack myself for wasting time on this. Thanks again though.

 Like (0)

DocStocks



Sep 1, 2011 5:31 PM (in response to DocStocks)

Re: How can I easily change file path?

Glad to hear that you found a way to do what you want but, do realize, doing dissertation research is just the start of one's career. When you get out into the "real" world, think carefully about how one's data, code and output are or should be stored. When one is working on the equivalent of 20 or 30 dissertations simultaneously, and have an unknown number of people working on the different projects, the use of the c:\ drive won't be sufficient. It is the one drive in Windows that has a defined limit above and beyond storage capacity.



art297



SunilGupta

Jun 24, 2011 6:36 PM

## Replacing pointer to SAS dataset to preserve dependent tasks

This question has been **Answered**.

Hi,

I have a situation in which the dataset is moved to another directory. In my project file, is there a way for me to repoint to the dataset in the new directory without losing all of the tasks that depend on the dataset? I would hate to manually recreate all queries and rerun tasks to reproduce the results with the updated dataset.

Thanks,  
Sunil



Patrick

Jun 24, 2011 8:11 PM (in response to SunilGupta)

**Helpful Answer** Replacing pointer to SAS dataset to preserve dependent tasks

Hi Sunil

EG projects have file extension .egp but are actually zip files. You can open your eg project file with WinZip. You should then find a project.xml file in the zip archive.

Bit of a hack but: just modify the relevant path in this xml file and things should work again.

HTH

Patrick

Like (1)



Patrick

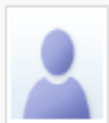
Jun 26, 2011 11:13 PM (in response to SunilGupta)

**Helpful Answer** Replacing pointer to SAS dataset to preserve dependent tasks

Never tried it but eventually the migration wizard also allows you to re-map datasets:

C:\Program Files\SAS\EnterpriseGuide\<4.2 or 4.3>MigrationWizard.exe

Like (1)



Doc@Duke

Jun 26, 2011 10:02 PM (in response to Patrick)

**Correct Answer** Replacing pointer to SAS dataset to preserve dependent tasks

In addition to Patrick's comment, I'd add that this situation is exactly why one should use libraries to point to SAS datasets in EGuide. Move a project and just change the libname and you are back in business.

Like (1)

# A Small Note of Frustration

For an Enterprise Guide-specific discussion forum, there sure are a lot of Base SAS answers!

# Summary

- Lots of problems, lots of suggestions
- Knowledgeable connections – SAS Corporate & otherwise
- Solutions to most problems



[www.sas.com](http://www.sas.com)