

# The In's and Out's of SAS and Excel

---

Tim Trussell, SAS Canada

**THE  
POWER  
TO KNOW®**

# Agenda

- Getting Excel into SAS Enterprise Guide (Demo)
- (A bit about Enterprise Guide, Demo)
- Getting the info back into Excel (Demo)
- Other EG destinations
- A note about a coding option
- Questions

# Introduction to SAS Enterprise Guide

- SAS Enterprise Guide software is an easy-to-use application that provides:
  - an intuitive visual interface
  - access to the power of SAS
  - transparent access to data
  - ready-to-use tasks for analysis and reporting
  - easy exporting of data and results to other applications
  - scripting and automation.

- You can use SAS Enterprise Guide to access the power of SAS without learning the SAS programming language.
  - Allows casual SAS users the ability to leverage the capabilities of SAS.
- If you are a SAS programmer, you can leverage SAS Enterprise Guide to generate common code or modify existing programs.
  - Under the hood EG uses SAS. It is a new tool, with some new tricks, but can be very familiar.

The screenshot displays the SAS Enterprise Guide interface. At the top, the title bar reads "SAS Enterprise Guide" and the menu bar includes File, Edit, View, Code, Data, Describe, Graph, Analyze, Add-In, OLAP, Tools, Window, and Help. The toolbar contains icons for file operations and project management. The Project Explorer on the left shows a project structure with "Process Flow" containing "Brent Oakville PASS.xls ('Raw Data\$')", which includes "Import Data", "Last Submitted Code", "Log", and "SASUSER.IMPW\_0006". The main window shows the "Log (Import Data (Brent Oakville PASS.xls ('Raw Data\$') (Process Flow)))" tab. The code editor displays SAS code with line numbers 1 through 9. A note is visible between lines 8 and 9. Below the code editor, the "Last Submitted Code (Import Data (Brent Oakville PASS.xls ('Raw Data\$') (Process Flow)))" tab is active, showing the SAS code for the "Last Submitted Code" task.

**SAS Enterprise Guide**

File Edit View Code Data Describe Graph Analyze Add-In OLAP Tools Window Help

Project Designer Maximize Workspace Task Status

SASUSER.IMPW\_0006 (Import Data (

**Project Explorer**

- Project
  - Process Flow
    - Brent Oakville PASS.xls ('Raw Data\$')
      - Import Data
        - Last Submitted Code
        - Log
        - SASUSER.IMPW\_0006

**Log (Import Data (Brent Oakville PASS.xls ('Raw Data\$') (Process Flow)))**

```
1          ;*';**';*/;quit;run;
2          OPTIONS PAGENO=MIN;
3          %LET _CLIENTTASKLABEL=%NRBQUOTE (Import Data);
4          %LET _EGTASKLABEL=%NRBQUOTE (Import Data);
5          %LET _CLIENTPROJECTNAME=%NRBQUOTE ();
6
7          ODS _ALL_ CLOSE;
8          ODS PROCTITLE;
NOTE: Some of your options or statements may not be supported with the Activex or Java
of devices. Graph defaults for these drivers may be different from other SAS/GI
device drivers. For further information, please contact Technical Support.
9          OPTIONS DEV=ACTIVEX;
```

**Last Submitted Code (Import Data (Brent Oakville PASS.xls ('Raw Data\$') (Process Flow)))**

```
%END;
DATA SASUSER.IMPW_0006;
/* Enterprise Guide creates this temporary asterisk
INFIL FILE "C:\DOCUME~1\cantjt\LOCALS~1\Temp\EGImpor
DELIMITER='*'
MISSOVER
DSD
%IF &ISMVS=FALSE %THEN %DO;
LRECL=32767
%END;
```

Task Status

# Behind the Scenes

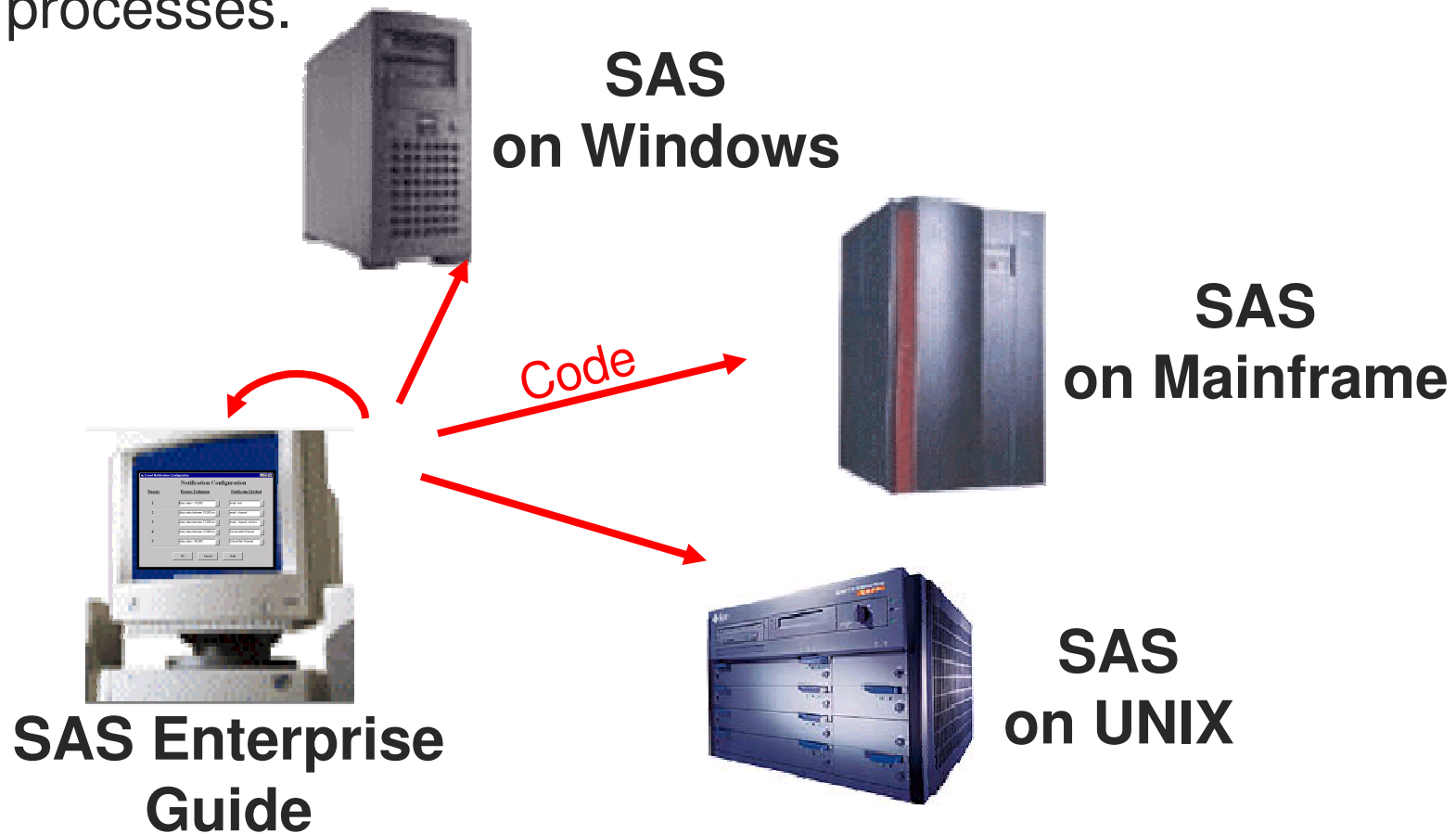
- SAS Enterprise Guide can use the execution power of the server to access data and run SAS processes.



## SAS Enterprise Guide

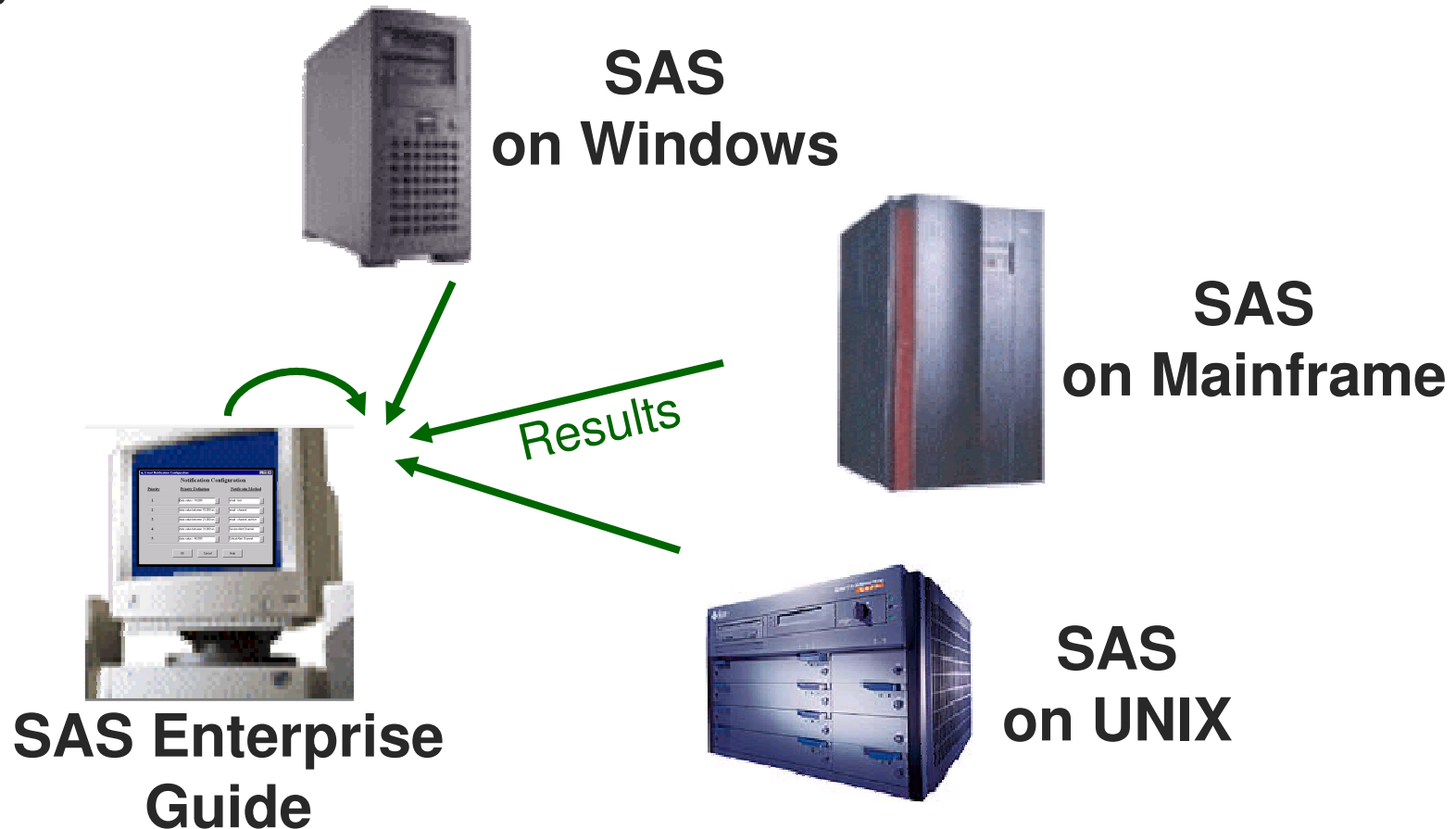
## Behind the Scenes

- SAS Enterprise Guide can use the execution power of the server to access data and run SAS processes.



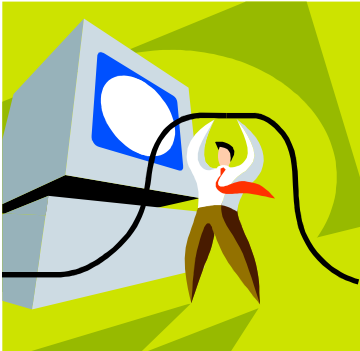
## Behind the Scenes

- Then SAS Enterprise Guide returns the results to your client PC.



# Introduction to SAS Enterprise Guide

- Tasks represent commonly used procedures from
  - Base SAS
  - SAS/STAT
  - SAS/QC
  - SAS/ETS
  - SAS/GRAPH.
- Data step manipulation can be done through wizards (generates SQL), or through a general code editor.



# Demonstration

# For the Coders

- ods tagsets.ExcelXP
- Creating Multi-Sheet Excel Workbooks the Easy Way with SAS®
  - Vincent DelGobbo, SAS Institute Inc., Cary, NC
  - Paper 120-2007
  - [www2.sas.com/proceedings/forum2007/229-2007.pdf](http://www2.sas.com/proceedings/forum2007/229-2007.pdf)