



## **SAS<sup>®</sup> EDUCATION ANALYTICAL SUITE**

Delivering powerful SAS<sup>®</sup> analytics and data integration to education



**THE  
POWER  
TO KNOW<sup>®</sup>**

# Superior analytics for teaching and research

## SOLUTION

The SAS Education Analytical Suite integrates more than 20 SAS products in a bundle exclusively available for educational professionals who want superior analytic tools. The suite is offered at a substantially reduced price that allows for flexible licensing options – designed to meet the distinct needs of a variety of user groups.

## CHALLENGES

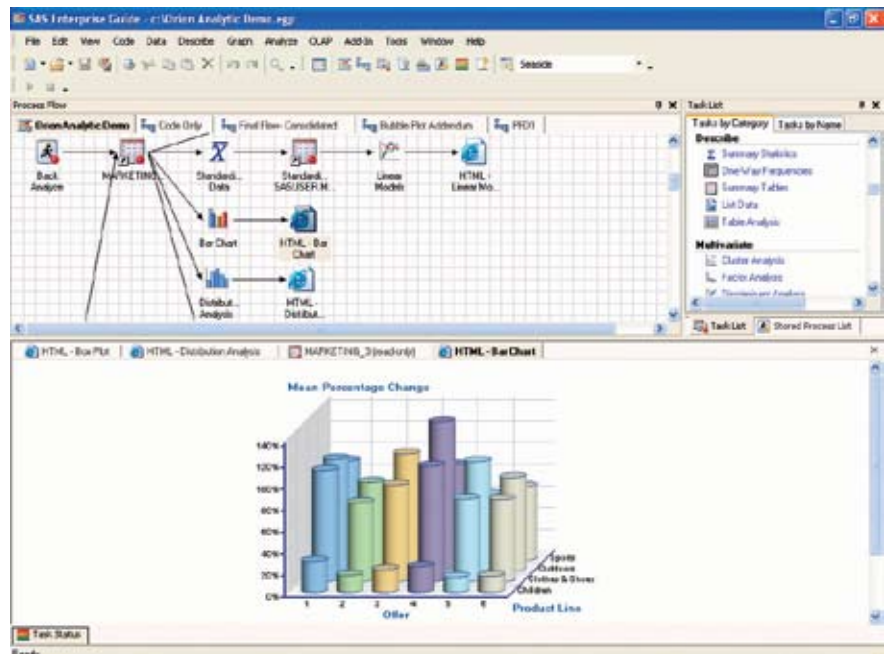
- Inaccurate and inconsistent data and reports.
- Inefficient and time-intensive reporting processes.
- Difficult to analyze data for academic research.
- Need sophisticated analytic tools to incorporate into classroom curricula.

Every day, educational professionals are faced with the challenge of finding answers to a variety of complex issues. They need accurate information to help them measure program effectiveness, strategically allocate resources, monitor student performance and more. In addition, they need analytic tools to use in the classroom and to conduct academic research.

To address the diverse issues within education, educational professionals need access to accurate data. However, the data is often located in multiple places, is difficult to access, isn't trustworthy and cannot be analyzed effectively or efficiently. As a

result, educational professionals lack the reliable data they need to make intelligent decisions about the issues that greatly affect the overall health of the organization.

The SAS Education Analytical Suite satisfies these data needs by providing SAS technology in a bundle that's been specifically designed for education. Educational professionals will now be able to take advantage of the powerful data access, reporting and analytics they need to gain insight into student assessment, program effectiveness, resource allocation, research initiatives and more – using one comprehensive solution.



*SAS Enterprise Guide provides an easy-to-use interface to access the power of SAS data access, reporting and analytics.*

---

## Benefits

---

### Point-and-Click Interface: SAS® Enterprise Guide®

---

SAS Enterprise Guide provides an intuitive, point-and-click interface to the full power of SAS. Interactive dialog boxes guide users through analytic and reporting tasks that range from simple to complex. This solution also provides transparent access to SAS data and external data, and enables exporting the results to other Windows and server-based applications.

- Create charts, graphs and reports for class exercises or research projects and institutional reporting needs.
- Perform analytics in less time.
- Review programming work.
- Access data from different sources for institutional reporting/analysis, class exercises or research projects.

---

### Flexible, Low-Cost Licensing Options

---

SAS is committed to leading the way for integrating technology and education. The SAS Education Analytical Suite is offered at a substantial discount to ensure that cost doesn't stand in the way of education getting the technology it needs. Flexible licensing options are available for users to install the software in either a server or PC environment.

---

### Unmatched Analytic Capabilities

---

The SAS Education Analytical Suite provides a comprehensive set of analytic capabilities that helps reduce uncertainty, predicts with precision and optimizes performance:

- **Statistics** – Use statistical data analysis to drive fact-based decisions.
- **Forecasting** – Analyze and predict outcomes based on historical patterns.
- **Econometrics** – Apply statistical methods to economic data, problems and trends.
- **Optimization** – Apply techniques such as optimization, scheduling and simulation to achieve the best result.
- **Quality improvement** – Identify, monitor and measure quality processes over time.

---

### Seamless Data Integration

---

Regardless of native format or platform, SAS quickly and easily integrates data from all sources. SAS data integration capabilities include:

- A high degree of control over data security by honoring and augmenting the native security of the target data source.
- Improved performance and reduced network traffic due to the ability to pass database queries, joins and some functions to a target data source for processing.

- The power of SAS software to cleanse, transform, analyze and present data from diverse data sources in accordance with established business rules of the organization.

---

### Expert SAS® Software Training Delivered to the Desktop

---

Web-based training is a component of the SAS Education Analytical Suite. Users will be able to enhance their SAS programming skills in a convenient online format – available when and where they need it. Training can be customized to satisfy all different skill levels by individually choosing which lessons to take.

#### ■ KEY BENEFITS

- **Easy point-and-click interface** to access the full power of SAS.
- **Flexible, low-cost licensing** options that meet the needs of education.
- **Comprehensive analytic capabilities** to provide insight and answers for administrators and teaching/research professionals.
- **Seamless, secure data integration** regardless of native format or platform.
- **Convenient, Web-based training** that can be customized to meet individual needs.

## About SAS

With more than 30 years of proven success in integrating technology and education, SAS is the acknowledged industry leader and innovator in business intelligence, advanced analytics and data management. SAS solutions and services empower your organization to transform raw data – from any source and across every channel – into vital intelligence you can use to make critical decisions about students, staff, resources and the overall future of your organization.

## THE SAS EDUCATION ANALYTICAL SUITE INCLUDES:

Base SAS®  
SAS® Enterprise Guide®  
SAS/ACCESS®  
SAS/ASSIST®  
SAS® Bridge for ESRI  
SAS/EIS®  
SAS/OR®  
SAS/QC®  
SAS/AF®  
SAS/LAB®  
SAS/CONNECT®  
SAS/ETS®  
SAS/FSP®  
SAS/GRAPH®  
SAS/IML®  
SAS/INSIGHT®  
SAS/SECURE®  
SAS/SHARE®  
SAS/STAT®  
SAS Online Tutor®  
SAS® Integration Technologies



THE  
POWER  
TO KNOW.

SAS Institute Inc. World Headquarters +1 919 677 8000

To contact your local SAS office, please visit: [www.sas.com/offices](http://www.sas.com/offices)

SAS and all other SAS Institute Inc. product or service names are registered trademarks or trademarks of SAS Institute Inc. in the USA and other countries. ® indicates USA registration. Other brand and product names are trademarks of their respective companies. Copyright © 2007, SAS Institute Inc. All rights reserved. 103052\_429482.0507