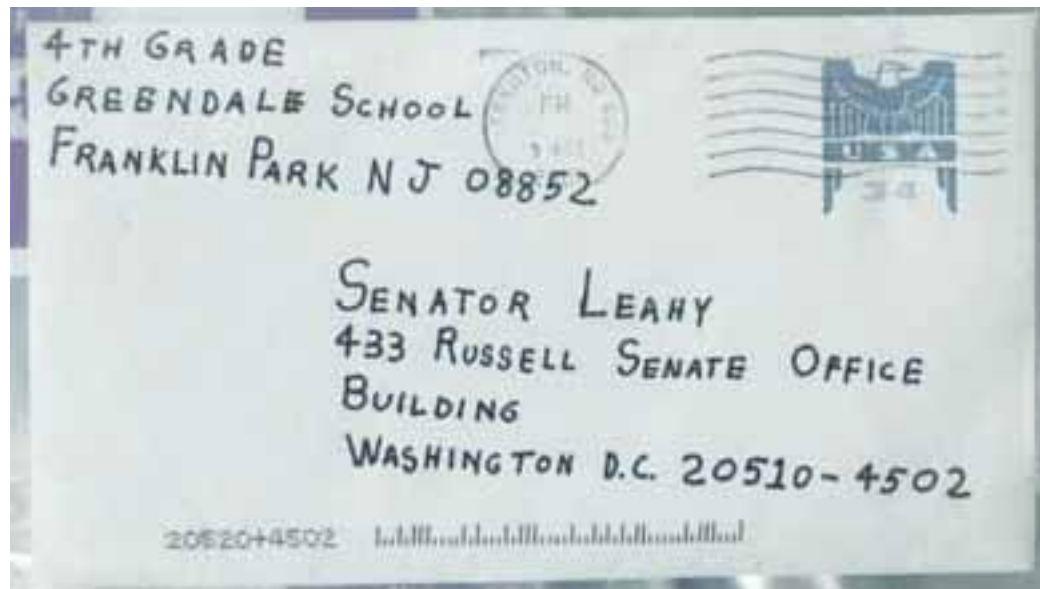


Leading and Succeeding with Analytics

Linda Combs, Former Controller, USA

Anthrax

US Senate Office Building



Make A Difference



**Things
Can Be Better**





What Needs To Be Fixed

Pick A Few Things



2001 Baseline Evaluation

2001

	Human Capital	Competitive Sourcing	Financial Perf.	E-Gov	Budget/Perf. Integration
AGRICULTURE	●	●	●	●	●
COMMERCE	●	●	●	●	●
DEFENSE	●	●	●	●	●
EDUCATION	●	●	●	●	●
ENERGY	●	●	●	●	●
EPA	●	●	●	●	●
HHS	●	●	●	●	●
HUD	●	●	●	●	●
INTERIOR	●	●	●	●	●
JUSTICE	●	●	●	●	●
LABOR	●	●	●	●	●
STATE	●	●	●	●	●
DOT	●	●	●	●	●
TREASURY	●	●	●	●	●
VA	●	●	●	●	●
AID	●	●	●	●	●
CORPS	●	●	●	●	●
FEMA	●	●	●	●	●
GSA	●	●	●	●	●
NASA	●	●	●	●	●
NSF	●	●	●	●	●
OMB	●	●	●	●	●
OPM	●	●	●	●	●
SBA	●	●	●	●	●
SMITHSONIAN	●	●	●	●	●
SSA	●	●	●	●	●

Executive Branch Management Scorecard

Current Status as of June 30, 2008

2008

	Human Capital	Commercial Services Management	Financial Perf.	E-Gov	Performance Improvement
AGRICULTURE	●	●	●	●↓	●
COMMERCE	●	●	●	●	●
DEFENSE	●	●	●	●↓	●
EDUCATION	●	●	●	●	●
ENERGY	●↓	●	●	●	●
EPA	●	●	●	●	●
HHS	●↓	●	●	●↑	●
DHS	●	●	●	●↓	●
HUD	●↑	●↑	●	●↓	●
INTERIOR	●↓	●	●	●↓	●
JUSTICE	●↓	●	●	●	●
LABOR	●	●	●	●	●
STATE	●	●	●	●	●
DOT	●	●	●	●	●
TREASURY	●	●	●	●	●
VA	●	●	●	●	●
USAID	●	●	●	●	●
CORPS	●↓	●	●	●↓	●
GSA	●	●	●	●	●
NASA	●	●	●	●	●
NSF	●↓	●	●	●	●
OMB	●	●↑	●	●	●
OPM	●	●	●	●↓	●↑
SBA	●	●	●	●↑	●
SMITHSONIAN	●	●	●	●↓	●
SSA	●	●	●	●	●

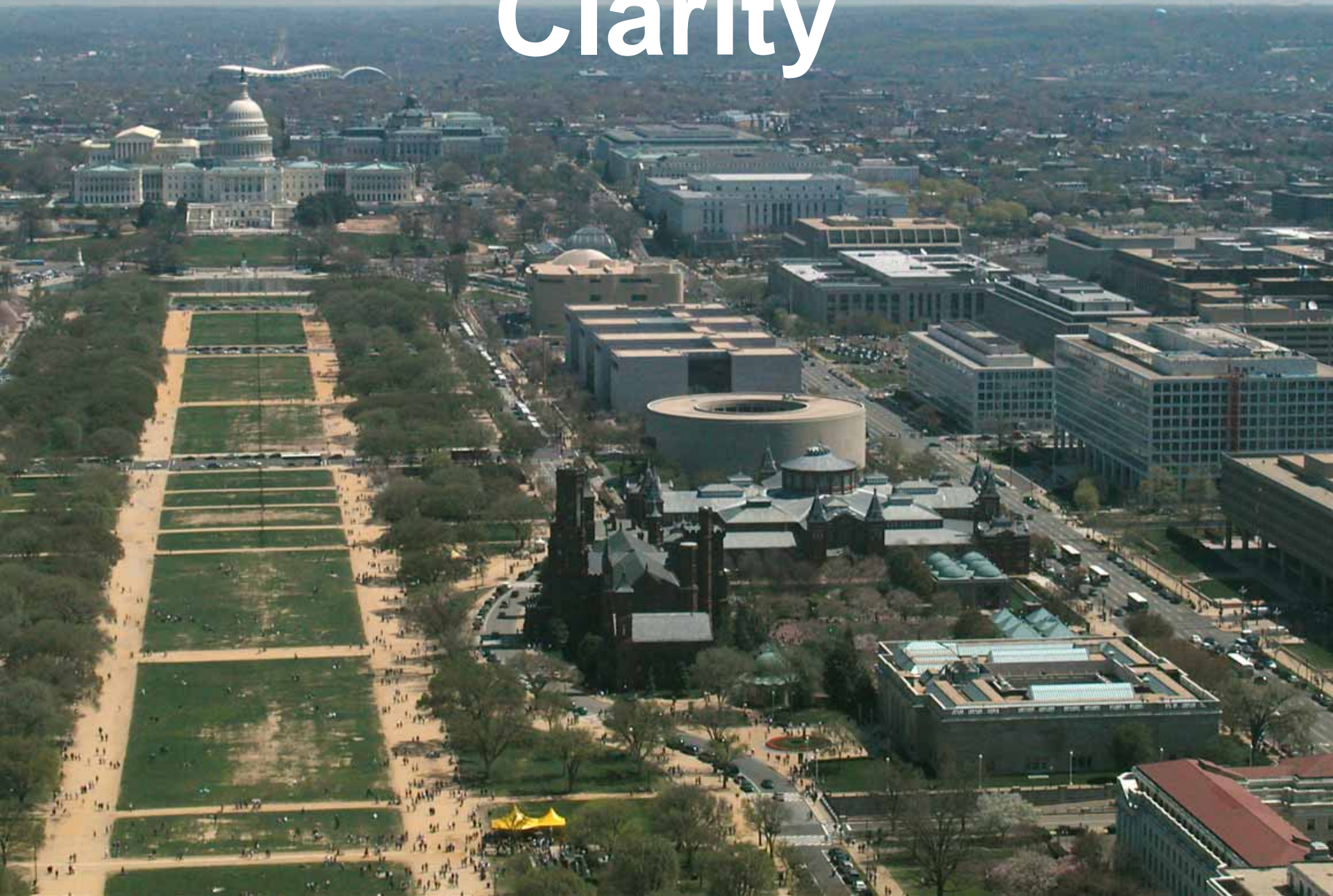
↑ ↓ Arrows indicate change in status since evaluation on March 30, 2008

Federal Government Metrics

A nighttime photograph of Washington, D.C. featuring the Washington Monument, the U.S. Capitol building, and the Lincoln Memorial, all illuminated against a dark sky with a large, bright full moon. The scene is reflected in the water in the foreground.

- **Financial**
- **Procurement**
- **Human Capital**
- **Technology**
- **Budget**

Clarity





Financial Metrics

Balance Check Book

A scenic view of the White House in Washington, D.C., with a large field of red and blue tulips in the foreground. The Washington Monument is visible in the background.

Electronic Payments

Paying Bills On Time

A scenic view of the White House in Washington, D.C., with a large field of red tulips in the foreground and the Washington Monument in the background. The scene is captured in bright daylight, with clear blue skies and lush green trees. The White House is the central focus, with its iconic portico and columns. In front of it, there is a large equestrian statue on a pedestal, flanked by two cannons. The foreground is dominated by a long, straight row of vibrant red tulips, with a narrow strip of blue flowers running alongside them. The overall atmosphere is bright and cheerful.

Credit Cards

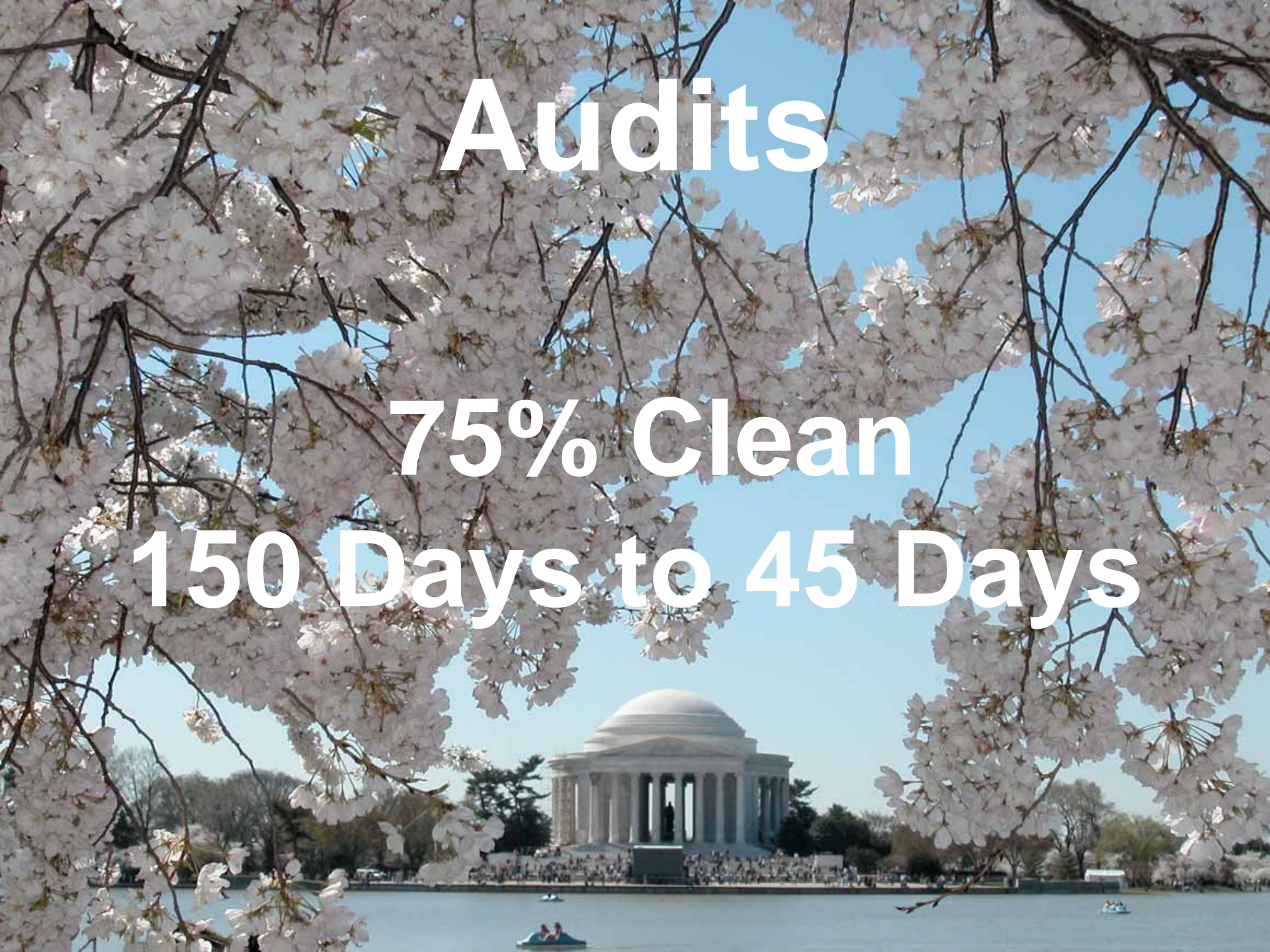
Accomplishments



Audits

75% Clean

150 Days to 45 Days



Improper Payments

Reduced \$9 Billion



Real Property

**\$4.5 Billion
Disposed**

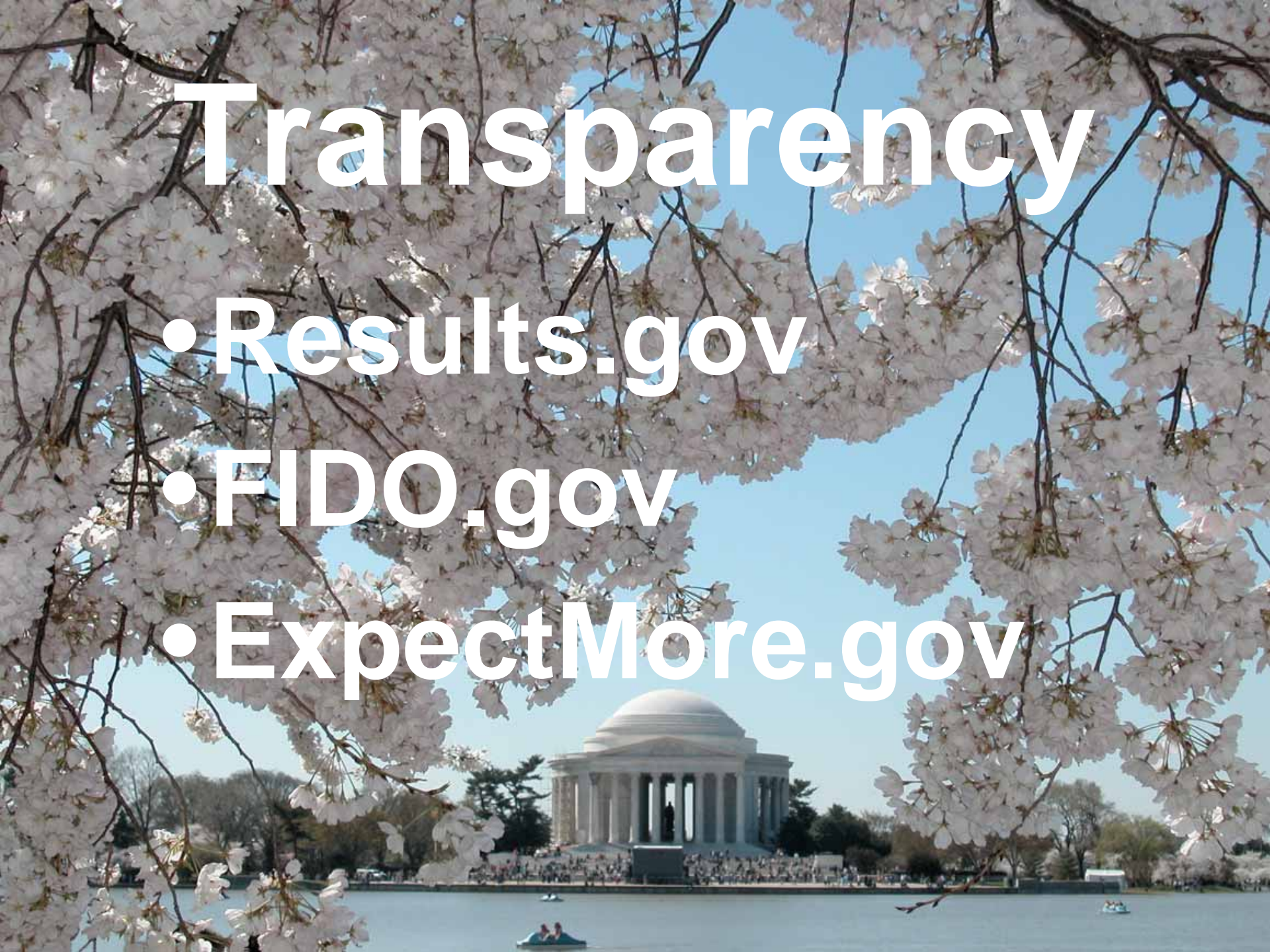


Transparency

- [Results.gov](https://www.results.gov)

- [FIDO.gov](https://www.fido.gov)

- [ExpectMore.gov](https://www.expectmore.gov)





**Technology
and
Leadership
Embrace Analytics**

Measurement





2001 Baseline Evaluation

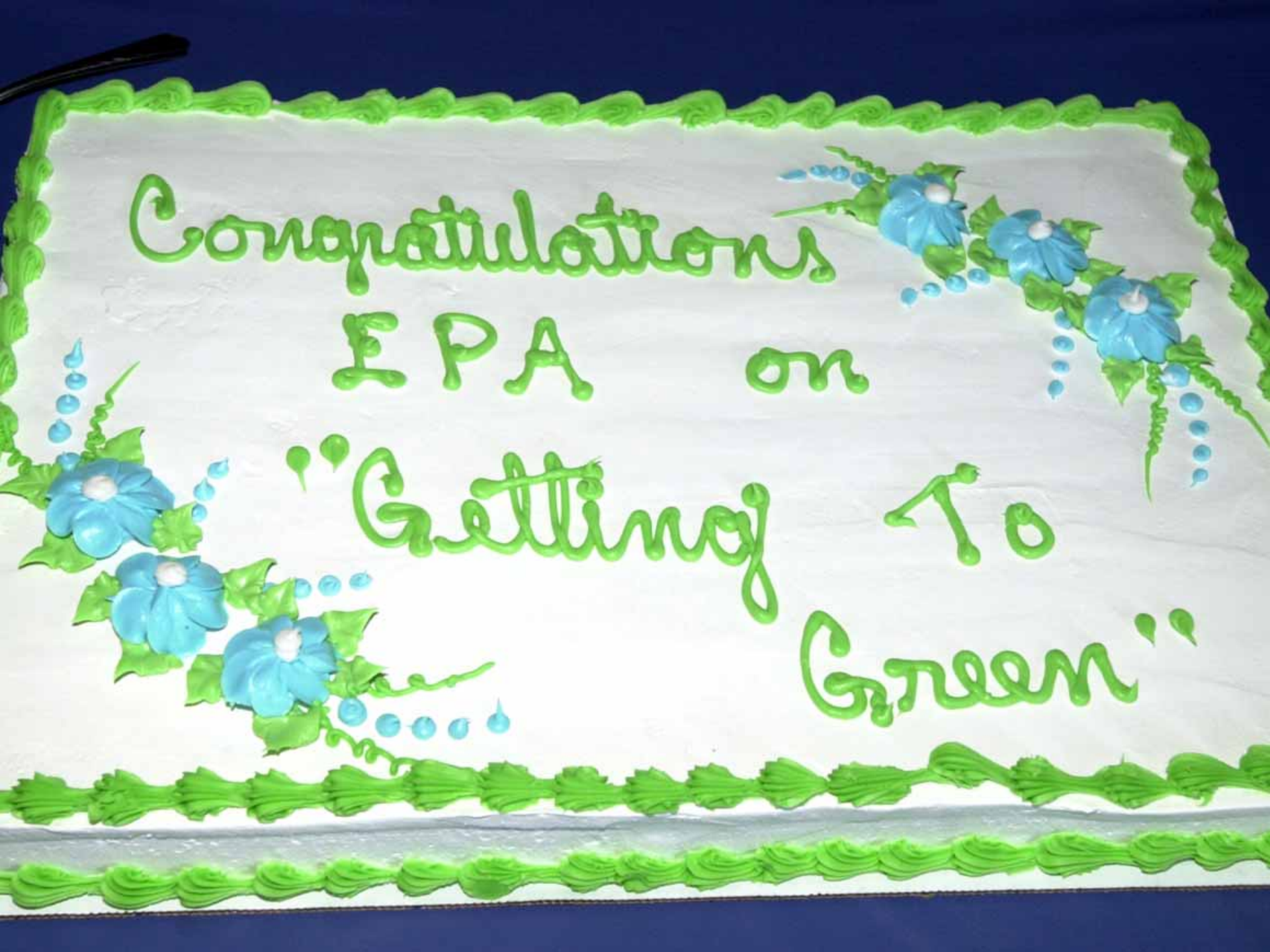
2001

	Human Capital	Competitive Sourcing	Financial Perf.	E-Gov	Budget/Perf. Integration
AGRICULTURE	●	●	●	●	●
COMMERCE	●	●	●	●	●
DEFENSE	●	●	●	●	●
EDUCATION	●	●	●	●	●
ENERGY	●	●	●	●	●
EPA	●	●	●	●	●
HHS	●	●	●	●	●
HUD	●	●	●	●	●
INTERIOR	●	●	●	●	●
JUSTICE	●	●	●	●	●
LABOR	●	●	●	●	●
STATE	●	●	●	●	●
DOT	●	●	●	●	●
TREASURY	●	●	●	●	●
VA	●	●	●	●	●
AID	●	●	●	●	●
CORPS	●	●	●	●	●
FEMA	●	●	●	●	●
GSA	●	●	●	●	●
NASA	●	●	●	●	●
NSF	●	●	●	●	●
OMB	●	●	●	●	●
OPM	●	●	●	●	●
SBA	●	●	●	●	●
SMITHSONIAN	●	●	●	●	●
SSA	●	●	●	●	●

Congratulations

EPA on

"Getting To
Green"



Clarity, Communication, and Celebration



Transparency & Simplicity



Accountability



Results



Ten Things You Can Do



- Believe you can make a difference
- Get your people committed
- Honor your processes
- Focus on a few things
- Align with corporate objectives

Ten Things You Can Do

The background of the slide features a photograph of the Washington Monument, a tall, white, obelisk-shaped structure, rising vertically in the center. The monument is set against a clear blue sky. In the foreground, there are several trees with autumn-colored leaves in shades of orange, yellow, and brown, framing the monument and the text. The overall scene is bright and clear, suggesting a sunny day.

- **Get the right tools and technology**
- **Use clear, truthful measures**
- **Use simple data visualization**
- **Be a good role model**
- **Focus on the future**





Questions?

