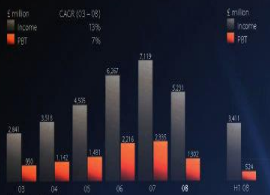


(POWER)POINTING YOUR WAY TO EXCEL(LENCE) A WORD ON SAS & MICROSOFT OFFICE

MATT MALCZEWSKI, SAS CANADA

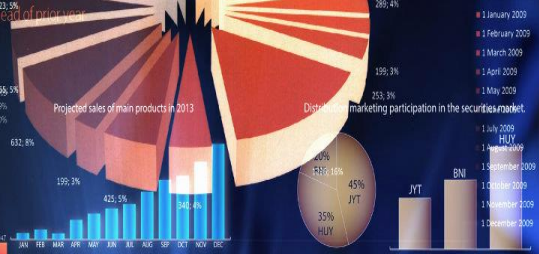


very strong income performance well ahead of prior year



Analysis of total income

	H1 08	H2 08	H1 09
Top-line income	4,794	5,074	10,489
Continued losses in income	(2,225)	(4,952)	(8,557)
Direct credit	552	811	(883)
Total income	3,121	933	1,049
Impairment charges and other credit provisions	(1,216)	(1,797)	(1,874)
Net income	2,315	526	415



Share of market activity



DAT	BID	ASK	PRO	QUA	DAT	BID	ASK	PRC	QUA
JAN	€ 241.00	€ 553.00	€ 150.00	339	JAN	€ 942.00	€ 348.00	€ 820.00	820
FEB	€ 595.00	€ 384.00	€ 374.00	784	FEB	€ 183.00	€ 970.00	€ 784.00	784
MAR	€ 116.00	€ 416.00	€ 432.00	934	MAR	€ 233.00	€ 076.00	€ 934.00	934
APR	€ 262.00	€ 245.00	€ 109.00	555	APR	€ 223.00	€ 202.00	€ 555.00	555
MAY	€ 380.00	€ 380.00	€ 803.00	385	MAY	€ 452.00	€ 483.00	€ 385.00	385
JUN	€ 780.00	€ 579.00	€ 672.00	974	JUN	€ 603.00	€ 363.00	€ 384.00	974
JUL	€ 692.00	€ 810.00	€ 933.00	575	JUL	€ 617.00	€ 240.00	€ 575.00	575
AUG	€ 537.00	€ 775.00	€ 934.00	645	AUG	€ 930.00	€ 830.00	€ 645.00	645
SEP	€ 508.00	€ 302.00	€ 484.00	941	SEP	€ 654.00	€ 748.00	€ 941.00	941
OCT	€ 837.00	€ 310.00	€ 950.00	802	OCT	€ 911.00	€ 952.00	€ 802.00	802
NOV	€ 373.00	€ 331.00	€ 423.00	715	NOV	€ 829.00	€ 715.00	€ 715.00	715
DEC	€ 688.00	€ 595.00	€ 339.00	557	DEC	€ 748.00	€ 542.00	€ 557.00	557

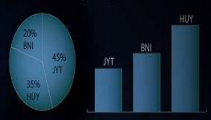


Share of market activity

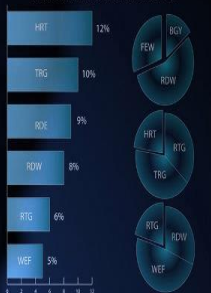


DAT	BID	ASK	PRO	QUA	DAT	BID	ASK	PRC	QUA
JAN	€ 241.00	€ 553.00	€ 150.00	339	JAN	€ 942.00	€ 348.00	€ 820.00	820
FEB	€ 595.00	€ 384.00	€ 374.00	784	FEB	€ 183.00	€ 970.00	€ 784.00	784
MAR	€ 116.00	€ 416.00	€ 432.00	934	MAR	€ 233.00	€ 076.00	€ 934.00	934
APR	€ 262.00	€ 245.00	€ 109.00	555	APR	€ 223.00	€ 202.00	€ 555.00	555
MAY	€ 380.00	€ 380.00	€ 803.00	385	MAY	€ 452.00	€ 483.00	€ 385.00	385
JUN	€ 780.00	€ 579.00	€ 672.00	974	JUN	€ 603.00	€ 363.00	€ 384.00	974
JUL	€ 692.00	€ 810.00	€ 933.00	575	JUL	€ 617.00	€ 240.00	€ 575.00	575
AUG	€ 537.00	€ 775.00	€ 934.00	645	AUG	€ 930.00	€ 830.00	€ 645.00	645
SEP	€ 508.00	€ 302.00	€ 484.00	941	SEP	€ 654.00	€ 748.00	€ 941.00	941
OCT	€ 837.00	€ 310.00	€ 950.00	802	OCT	€ 911.00	€ 952.00	€ 802.00	802
NOV	€ 373.00	€ 331.00	€ 423.00	715	NOV	€ 829.00	€ 715.00	€ 715.00	715
DEC	€ 688.00	€ 595.00	€ 339.00	557	DEC	€ 748.00	€ 542.00	€ 557.00	557

Distribution marketing participation in the securities market



Distribution of the securities market key players



Revenue growth analysis

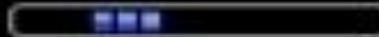


SPEED OF ANALYTICS

RISE OF THE DATA SCIENTIST



THE REALITY MICROSOFT STILL RULES THE ROOST



EXCEL IS EVERYWHERE

WHY?

- You can work with the data, and visually represent it
- Highly customizable visualization of data (colour, shading, emphasis)
- Some statistical capabilities which can help illustrate trends or points of interest
- Allows for data merges – bringing different data sources together, including images
- Pervasive – accessible through laptops, desktops, phones, tablets....

THE CHALLENGE

- Ability to work within a comfortable framework (Microsoft Office) for business professionals who are unfamiliar with statistics, data management and analytics
- Still provide value to the seasoned analytics professional



Image Credit: [LThomason](#)

- Extends functionality of the Office suite (Excel, Word, PowerPoint & Outlook)
- Facilitates access to SAS analytics and reporting functionality with little SAS programming experience
- Sends SAS content from one Microsoft Office application to another
- Allows for automatic charts and quick statistics
- Also caters to the SAS Studio and Visual Analytics users

- A robust tool for sharing SAS content – custom stored processes and reports can be built and are centrally stored (metadata repository)
- Allows for impact analysis on a data source – where original sits and also items dependent upon it
- Through Excel, promotes opening/editing/ data sources (including SAS)
- Allows for complex analyses (80 + SAS tasks)
- Refreshes source data scheduled or on demand
- Because processing is done on the server, Excel's record limitation of 65,536 rows is overruled

INTRODUCTION TO THE DATA

We need something fun. Something culturally relevant. Something EPIC.

STAR
WARS



Image courtesy ScienceFiction.com

**WHO SHOT
FIRST?!?!?!?**



Image Courtesy: [YouTube](#)

INTRODUCTION TO THE DATA

 FIELD WORK | 4:58 PM | JUL 22, 2014

America's Favorite 'Star Wars' Movies (And Least Favorite Characters)

By WALT HICKEY

We ran a poll through [SurveyMonkey Audience](#), surveying 1,186 respondents from June 3 to 6 (the [data is available on GitHub](#)).



This week, I caught a sneak peek [of the X-Wing fighter](#) from the new "Star Wars" films in production. The forthcoming movies — and the middling

INTERACTIVES

NBA Predictions

UPDATED 8 HOURS AGO

Upcoming games

3/2		Hornets def. 76ers	73%
3/2		Magic def. Bulls	56%
3/2		Celtics def. Trail Blazers	71%
3/2		Raptors def. Jazz	78%
3/2		Spurs def. Pistons	90%
3/2		Bucks def. Pacers	56%

[See predictions for every NBA game](#)

The Facebook Primary



TOURING THE RIBBON

The image displays the SAS software ribbon interface, which is divided into three horizontal sections corresponding to different applications: Excel (top), PowerPoint (middle), and Word (bottom). Each section has a 'FILE' tab highlighted in its respective color (green, orange, and blue). The ribbon is organized into functional groups: FILE, HOME, INSERT, PAGE LAYOUT, FORMULAS, DATA, REVIEW, VIEW, DEVELOPER, and JMP. Below the ribbon, there are several toolbars and panels, including 'Tasks Reports', 'SAS Central Favorites', 'Refresh', 'Modify Properties', 'Manage Content', 'Tools', and 'Help'. A red rectangular box highlights the 'SAS' button in the top right corner of each ribbon section. The bottom of the image shows a scroll bar and a status bar with the number '1'.

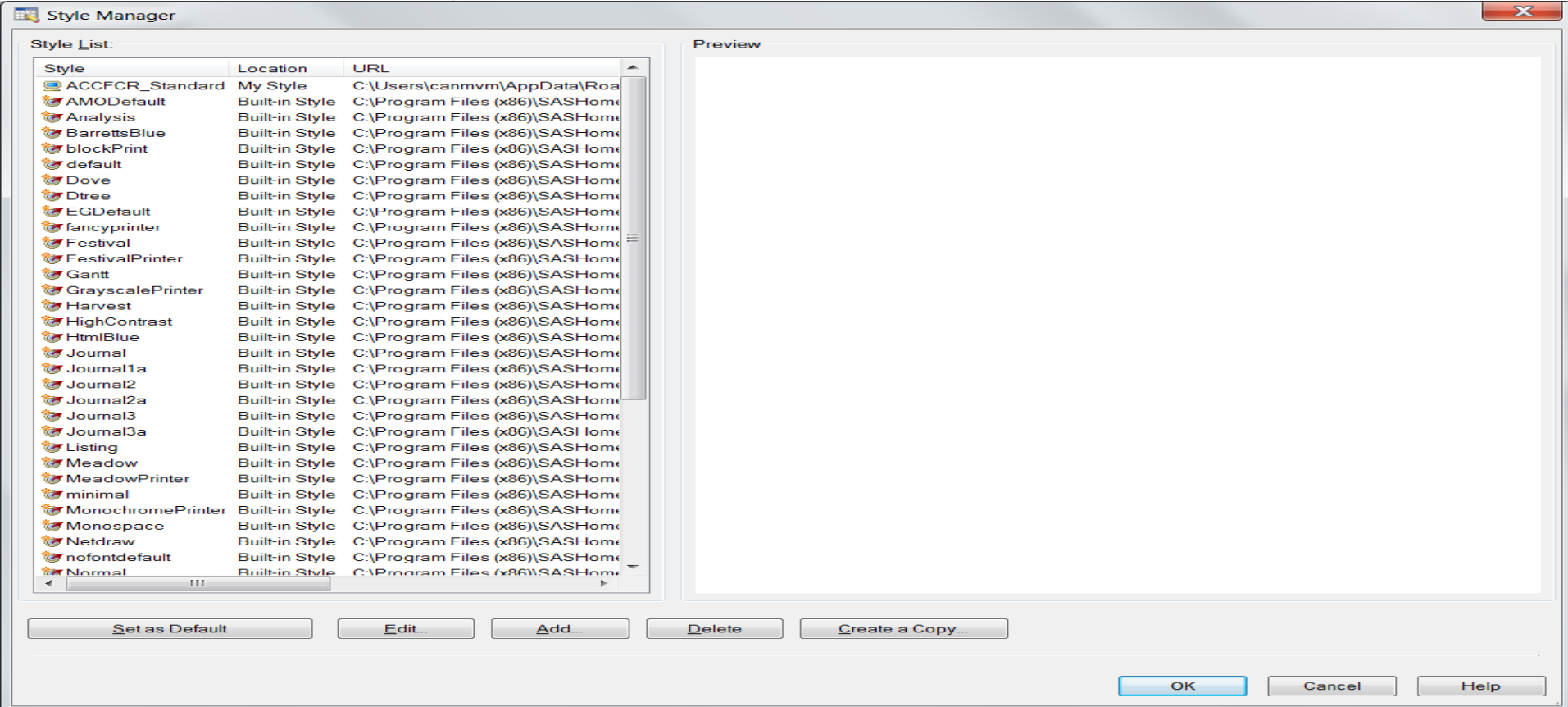


SAS Data Tasks Reports SAS Central Favorites Refresh Selection Modify Properties Manage Content Tools Help

A	B	C	D	E	F	G	H	O	P	Q	R	S	T	U	V	W
1																
2																
3																
4																
5																
6																
7																
8																
9																
10																
11																
12																
13																
14																
15																
16																
17																
18																
19																
20																
21																
22																
23																
24																
25																
26																
27																
28																
29																
30																
31																

- Open from SAS Folders
- Save to SAS Folders
- Create Schedule...
- Connections...
- Status
- Style Manager...
- View Report on Web
- View Input Data
- Replicate SAS Content
- Restore Content
- Options

APPLY YOUR COMPANY STYLE



METADATA

SAS Data Tasks Reports SAS Central Favorites Refresh Properties Manage Tools Help

Insert Selection

A1				
1				
2				
3				
4				
5				
6				
7				
8				
9				
10				
11				
12				
13				
14				
15				
16				
17				
18				
19				
20				
21				
22				
23				
24				
25				
26				
27				
28				
29				
30				
31				

Connections

Profiles Servers Updates

Name	Machine	Port	User
<do not use a profil...			
sascanadabiprod	torvmpbimeta1.na...	8561	canmvm

Set Active Add... Modify... Delete

More (F1)...

Close

SAS Data
Tasks Reports
SAS Central Favorites
SAS Central Favorites

Insert

A1	:	X	✓	f _x
A	B	C		
1				
2				
3				
4				
5				
6				
7				
8				
9				
10				
11				
12				
13				
14				
15				
16				
17				
18				
19				
20				
21				
22				
23				
24				
25				
26				
27				
28				
29				
30				
31				

Sheet1

SAS Add-In for Microsoft Office Options

Data

- Display labels instead of variable names
- Sort variables in alphabetical order
- Show details of data sets in the File dialog box
- Display aggregated values when opening information maps

Number of distinct values for filter: 25

Maximum number of rows to process for distinct value requests: 100000

Display

- Display data source and filter information on the status bar
- Labels in first row for Excel data sources
- Open data into an Excel Table

Formatting:

Raw values Presented values Automatic

Close edited data after period of inactivity: 10 minutes

Recent Data

Number of items to display in recent data list: 10

Output Data Sets

- Open output data automatically
- Open output data into pivot table
- Show record numbers
- Show data set and filter information in the worksheet

Number of records to display: 500

OLAP

- Automatically select fields for OLAP PivotTables

Security

Persist credentials for SAS data sets:

Persist during session

Automatic Charts and Quick Stats

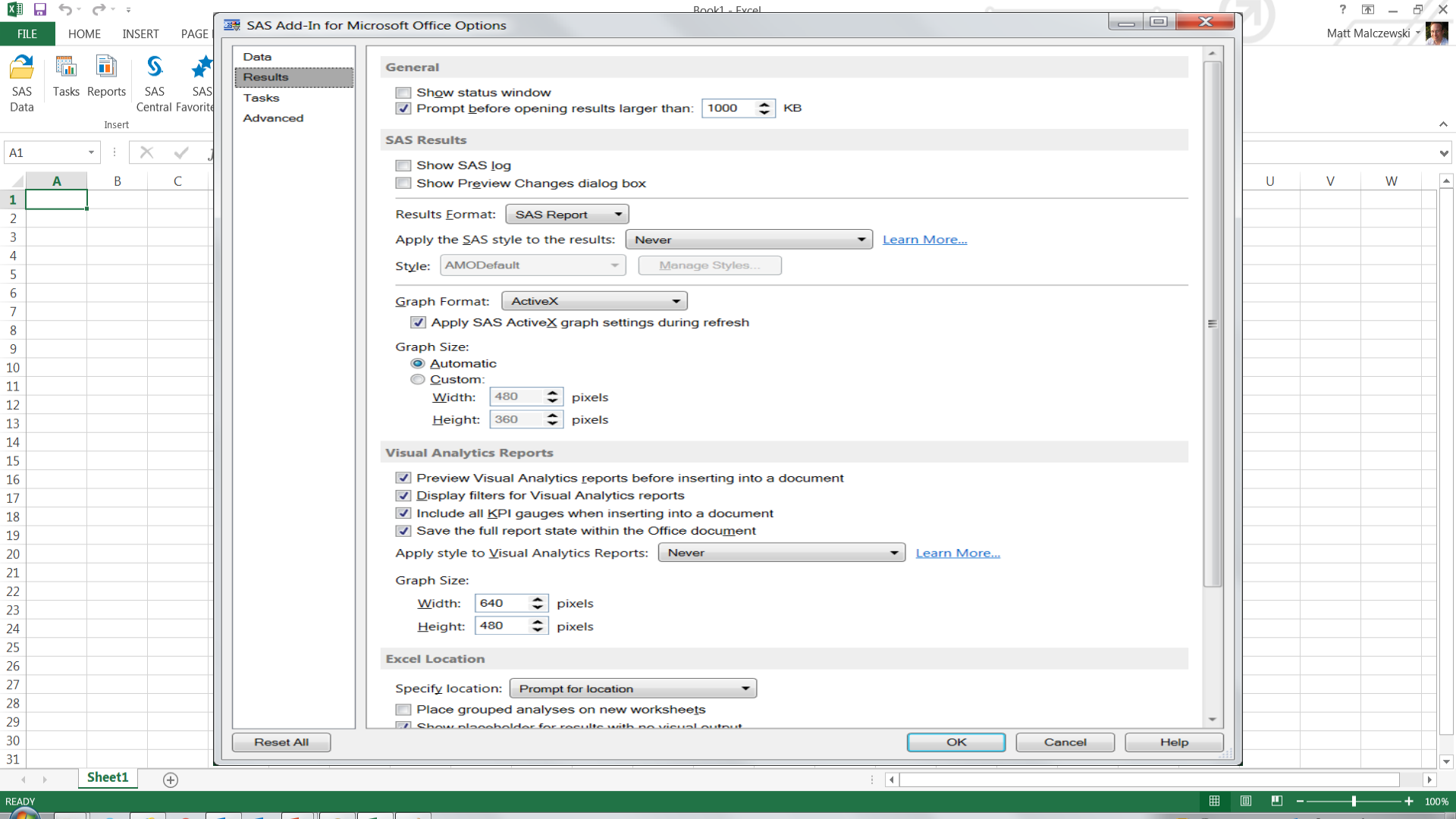
- Display warning message if data set exceeds: 1000000 records

Windows taskbar and background grid

Windows taskbar: ? [Icons] - [Maximize] [Close] Matt Malczewski

Background grid: V W

System tray: READY + 100%



- Data
- Results**
- Tasks
- Advanced

General

- Show status window
- Prompt before opening results larger than: 1000 KB

SAS Results

- Show SAS log
- Show Preview Changes dialog box

Results Format: SAS Report

Apply the SAS style to the results: Never [Learn More...](#)

Style: AMODefault [Manage Styles...](#)

Graph Format: ActiveX

- Apply SAS ActiveX graph settings during refresh

Graph Size:

- Automatic
- Custom:
 - Width: 480 pixels
 - Height: 360 pixels

Visual Analytics Reports

- Preview Visual Analytics reports before inserting into a document
- Display filters for Visual Analytics reports
- Include all KPI gauges when inserting into a document
- Save the full report state within the Office document

Apply style to Visual Analytics Reports: Never [Learn More...](#)

Graph Size:

Width: 640 pixels

Height: 480 pixels

Excel Location

Specify location: Prompt for location

- Place grouped analyses on new worksheets
- Show placeholder for results with no visual output

Reset All

OK

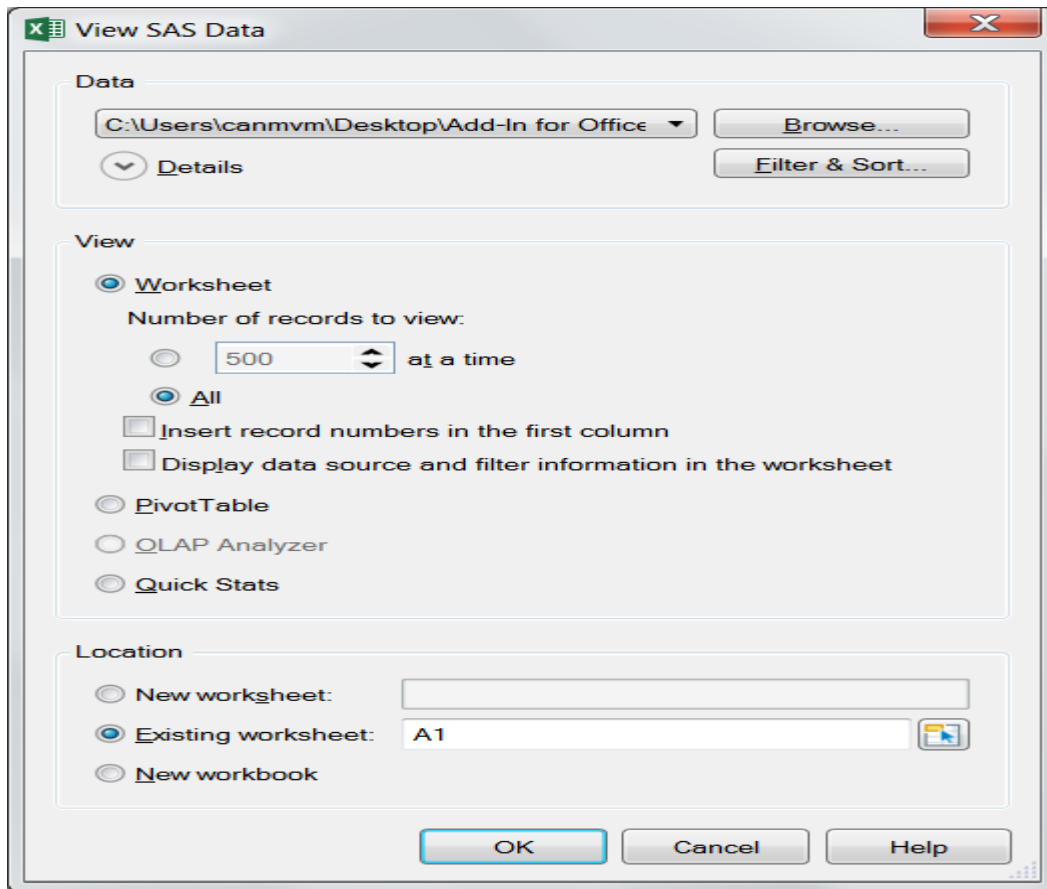
Cancel

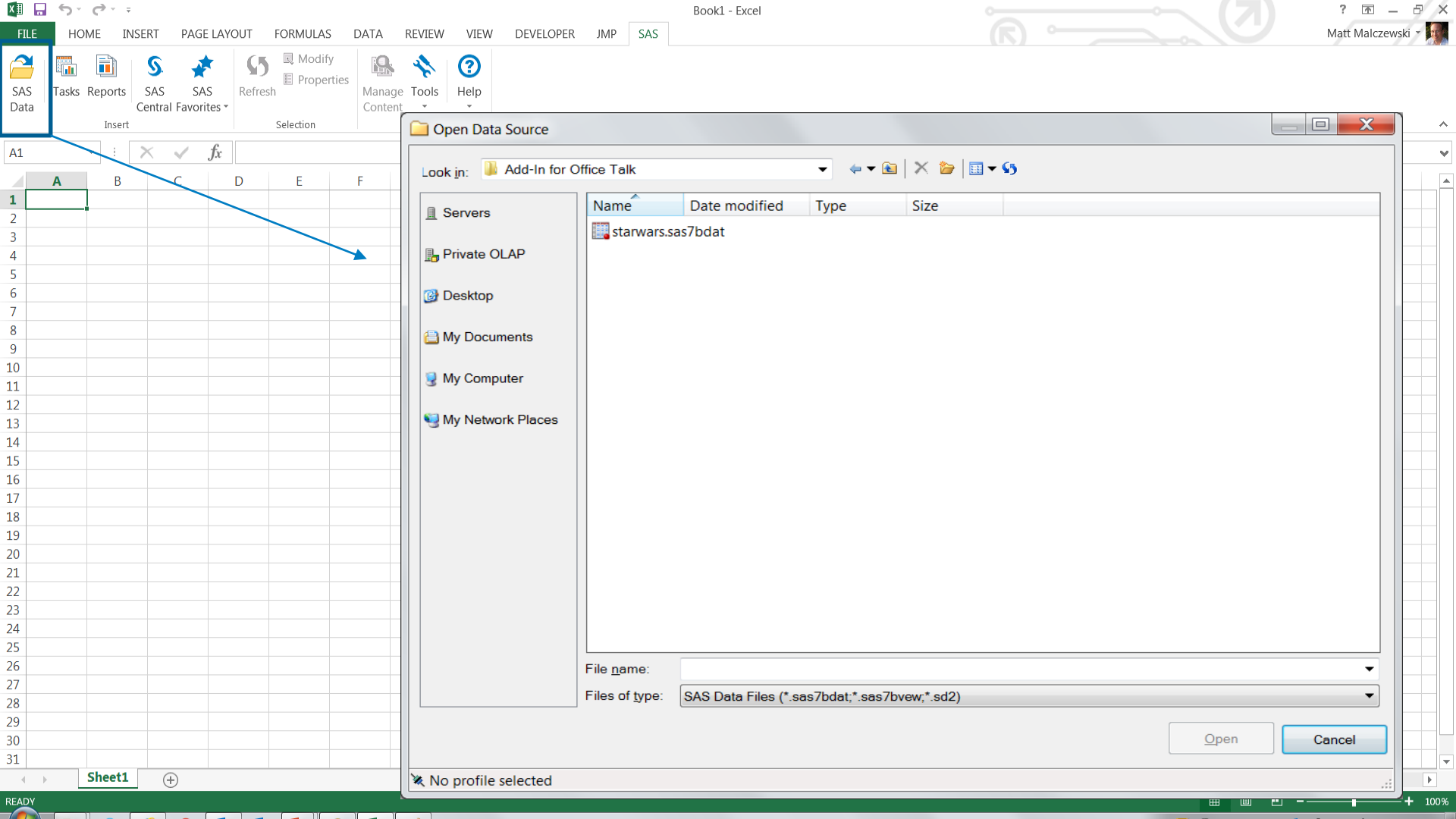
Help

Excel spreadsheet showing 'Sheet1' with columns A, B, C and rows 1-31. The 'A1' cell is selected.

Excel spreadsheet showing columns U, V, W and rows 1-31.

MOVING IT IN





FILE HOME INSERT PAGE LAYOUT FORMULAS DATA REVIEW VIEW DEVELOPER JMP SAS

SAS Data Tasks Reports SAS Central Favorites Refresh Properties Manage Content Tools Help

A1

	A	B	C	D	E	F
1						
2						
3						
4						
5						
6						
7						
8						
9						
10						
11						
12						
13						
14						
15						
16						
17						
18						
19						
20						
21						
22						
23						
24						
25						
26						
27						
28						
29						
30						
31						

Open Data Source

Look in: Add-In for Office Talk

Name	Date modified	Type	Size
starwars.sas7bdat			

File name:

Files of type: SAS Data Files (*.sas7bdat;*.sas7bview;*.sd2)

Open Cancel

No profile selected

SAS Data

Tasks Reports SAS Central Favorites

Refresh Selection

Modify Properties

Manage Content Tools Help

A	B	C	D	E	F	G	H	I	J	K	L	M	N	O	P	Q	R	S	T	U	V	W
1																						
2																						
3																						
4																						
5																						
6																						
7																						
8																						
9																						
10																						
11																						
12																						
13																						
14																						
15																						
16																						
17																						
18																						
19																						
20																						
21																						
22																						
23																						
24																						
25																						
26																						
27																						
28																						
29																						
30																						
31																						

SAS Add-In

Opening SAS data source
"C:\Users\canmvm\Desktop\Add-In for Office
Talk\starwars.sas7bdat".

Cancel

SAS Data
Tasks Reports
SAS Central Favorites
Refresh
Filter & Sort Properties
Manage Content
Tools
Help
Source: C:\Users\canmvm\Desktop\Add-In
Records: 1 - 1,186
Per View: All
View All
View Column Properties
Create New Records
Delete Records

Column Properties for C:\Users\canmvm\Desktop\Add-In for Office Talk\starwars.sas7bdat (read-only)

Name	Label	Type	Group	Length	Display format	Read-in format
Respondent_ID		Numeric	Numeric	8	BEST12.	BEST12.
Seen_Movies		Numeric	Numeric	8	BEST12.	BEST12.
Fan		Numeric	Numeric	8	BEST12.	BEST12.
Seen_Ep_1_The_Phantom_Menace		Numeric	Numeric	8	BEST12.	BEST12.
Seen_Ep_2_Attack_of_the_Clones		Numeric	Numeric	8	BEST12.	BEST12.
Seen_Ep_3_Revenge_of_the_Sith		Numeric	Numeric	8	BEST12.	BEST12.
Seen_Ep_4_A_New_Hope		Numeric	Numeric	8	BEST12.	BEST12.
Seen_Ep_5_The_Empire_Strikes_Bac		Numeric	Numeric	8	BEST12.	BEST12.
Seen_Ep_6_Return_of_the_Jedi		Numeric	Numeric	8	BEST12.	BEST12.
Rank_Preference_Ep_1		Numeric	Numeric	8	BEST12.	BEST12.
Rank_Preference_Ep_2		Numeric	Numeric	8	BEST12.	BEST12.
Rank_Preference_Ep_3		Numeric	Numeric	8	BEST12.	BEST12.
Rank_Preference_Ep_4		Numeric	Numeric	8	BEST12.	BEST12.
Rank_Preference_Ep_5		Numeric	Numeric	8	BEST12.	BEST12.
Rank_Preference_Ep_6		Numeric	Numeric	8	BEST12.	BEST12.
Perception_Han_Solo		Numeric	Numeric	8	F12.	BEST12.
Perception_Luke_Skywalker		Numeric	Numeric	8	BEST12.	BEST12.
Perception_Princess_Leia		Numeric	Numeric	8	BEST12.	BEST12.
Perception_Anakin_Skywalker		Numeric	Numeric	8	BEST12.	BEST12.
Perception_Obi_Wan_Kenobi		Numeric	Numeric	8	BEST12.	BEST12.
Perception_Emperor_Palpatine		Numeric	Numeric	8	BEST12.	BEST12.
Perception_Darth_Vader		Numeric	Numeric	8	BEST12.	BEST12.
Perception_Lando_Calrissian		Numeric	Numeric	8	BEST12.	BEST12.
Perception_Boba_Fett		Numeric	Numeric	8	BEST12.	BEST12.
Perception_C3PO		Numeric	Numeric	8	BEST12.	BEST12.
Perception_R2_D2		Numeric	Numeric	8	BEST12.	BEST12.
Perception_Jar_Jar_Binks		Numeric	Numeric	8	BEST12.	BEST12.
Perception_Padme_Amidala		Numeric	Numeric	8	BEST12.	BEST12.
Perception_Yoda		Numeric	Numeric	8	BEST12.	BEST12.
Who_Shot_First		Numeric	Numeric	8	BEST12.	BEST12.
Star_Trek_Fan		Numeric	Numeric	8	BEST12.	BEST12.
Gender		Character	Character	1	SCHAR1.	SCHAR1.
Age		Character	Character	5	SCHAR5.	SCHAR5.
Household_Income		Character	Character	19	SCHAR19.	SCHAR19.
Education		Character	Character	32	SCHAR32.	SCHAR32.
Census_Region		Character	Character	18	SCHAR18.	SCHAR18.

Close

FILE HOME INSERT PAGE LAYOUT FORMULAS DATA REVIEW VIEW DEVELOPER JMP SAS DESIGN

SAS Data Tasks Reports SAS Central Favorites Refresh Filter & Sort Properties Manage Content Tools Help

Source: C:\Users\canmvm\Desktop\Add
Records: 1 - 1,186
Per View: All View All

View Column Properties
Create New Records
Delete Records

Begin Edit Commit

External Data

	A	B	C	D	E	F	G	H	
1	Respondent_ID	Seen_Movies	Fan	Seen_Ep_1_The_Phantom_Menace	Seen_Ep_2_Attack_of_the_Clones	Seen_Ep_3_Revenge_of_the_Sith	Seen_Ep_4_A_New_Hope	Seen_Ep_5_The_Empire_Strikes_Bac	Seen_Ep_6_6
2	3288372923	1	0	1	1	0	0	1	
3	3288373068	1	1	1	1	1	1	1	
4	3288375286	0		0	0	0	0	0	
5	3288378779	1	1	1	1	1	1	1	
6	3288388730	1	1	1	1	1	1	1	
7	3288389603	1	1	1	1	1	1	1	
8	3288391812	1	1	0	0	0	0	1	
9	3288395255	0		0	0	0	0	0	
10	3288396374	1	0	1	1	1	0	1	
11	3288398062	1	0	1	1	0	0	0	
12	3288401136	1	1	1	1	1	1	1	
13	3288401681	1	0	1	1	1	0	0	
14	3288402511	1	1	1	1	1	1	1	
15	3288402592	1	1	0	0	0	1	1	
16	3288402643	1	1	1	1	1	1	1	
17	3288402717	0		0	0	0	0	0	
18	3288408698	1	1	1	0	0	1	1	
19	3288410073	0		0	0	0	0	0	
20	3288410348	1	0	1	0	0	0	1	
21	3288413441	1	1	1	1	1	1	1	
22	3288414025	1	1	1	1	1	1	1	
23	3288415166	1	0	1	1	1	0	1	
24	3288416959	1	0	0	0	0	1	1	
25	3288417641	1	1	1	0	0	1	1	
26	3288417782	1	0	1	1	1	0	1	

LET'S EXPLORE THE DATA

SAS Data | Tasks Reports | SAS Central Favorites | Refresh | Filter & Sort Properties | Manage Content | Tools | Help | Source: C:\Users\canmvm\Desktop\Add-In | Records: 1 - 1,186 | Per View: All | View All | Begin Edit | Commit | View Column Properties | Create New Records | Delete Records | External Data

	A	B	C	D	E	F
1	Respondent_ID	Seen_Movies	Fan	Seen_Ep_1_The_Phantom_Menace	Seen_Ep_2_Attack_of_the_Clones	Seen_Ep_3_Revenge_of_the_Sith
2	3288372923	1	0	1	1	0
3	3288373068	1	1	1	1	1
4	3288375286	0		0	0	0
5	3288378779	1	1	1	1	1
6	3288388730	1	1	1	1	1
7	3288389603	1	1	1	1	1
8	3288391812	1	1	0	0	0
9	3288395255	0		0	0	0
10	3288396374	1	0	1	1	1
11	3288398062	1	0	1	1	0
12	3288401136	1	1	1	1	1
13	3288401681	1	0	1	1	1
14	3288402511	1	1	1	1	1
15	3288402592	1	1	0	0	0
16	3288402643	1	1	1	1	1
17	3288402717	0		0	0	0
18	3288408698	1	1	1	0	0
19	3288410073	0		0	0	0
20	3288410348	1	0	1	0	0
21	3288413441	1	1	1	1	1
22	3288414025	1	1	1	1	1
23	3288415166	1	0	1	1	1
24	3288416959	1	0	0	0	0
25	3288417641	1	1	1	0	0
26	3288417782	1	0	1	1	1
27	3288420798	1	0	1	0	1
28	3288421819	0		0	0	0
29	3288423045	1	0	0	0	0
30	3288423088	0		0	0	0
31	3288425859	1	0	1	1	1

Tasks

Find a task

All Tasks

- Area Plot
- ARIMA Modeling and Forecasting
- Automatic Chart
- Bar Chart
- Bar Chart Wizard
- Bar-Line Chart
- Basic Forecasting
- Box Chart
- Box Plot
- Bubble Plot
- c Chart
- Canonical Correlation
- CDF Plots
- Characterize Data
- Cluster Analysis
- Compare Data
- Contour Plot
- Copv to SAS Server

	A	B	C	D	E	F
1	Respondent_ID	Seen_Movies	Fan	Seen_Ep_1_The_Phantom_Menace	Seen_Ep_2_Attack_of_the_Clones	Seen_Ep_3_Revenge_of_the_Sith
2	3288372923		1	0	1	0
3	3288373068		1	1	1	1
4	3288375286		0		0	0
5	3288378779		1	1	1	1
6	3288388730		1	1	1	1
7	3288389603		1	1	1	1
8	3288391812		1	1	0	0
9	3288395255		0		0	0
10	3288396374		1	0	1	1
11	3288398062		1	0	1	0
12	3288401136		1	1	1	1
13	3288401681		1	0	1	1
14	3288402511		1	1	1	1
15	3288402592		1	1	0	0
16	3288402643		1	1	1	1
17	3288402717		0		0	0
18	3288408698		1	1	1	0
19	3288410073		0		0	0
20	3288410348		1	0	1	0
21	3288413441		1	1	1	1
22	3288414025		1	1	1	1
23	3288415166		1	0	1	1
24	3288416959		1	0	0	0
25	3288417641		1	1	1	0
26	3288417782		1	0	1	1
27	3288420798		1	0	1	0
28	3288421819		0		0	0
29	3288423045		1	0	0	0
30	3288423088		0		0	0
31	3288425859		1	0	1	1

Characterize Data

Open Help ☆

The Characterize Data wizard helps you to report, graphs, and frequency and univariate statistics that describe the main characteristics of the data.

Category: Describe
Type: Built-in Task
Last used: 4/7/2016 10:46:06 AM
Procs: CONTENTS, UNIVARIATE

Tasks

Filters 1

Find a task

Filtered Tasks [Clear](#)

- Characterize Data
- One-Way Frequencies
- Table Analysis

Filters

- DATA Step
- DATASETS
- DISCRIM
- EXPAND
- FACTOR
- FASTCLUS
- FORECAST
- FREQ**
- G3D
- GBARLINE
- GCHART
- GCONTOUR
- GENMOD
- GLM
- GMAP
- GLOT
- GRADAR
- GREPLAY

SAS Data | Tasks Reports | SAS Central Favorites | Refresh | Filter & Sort Properties | Manage Content | Tools | Help

Source: C:\Users\canmvm\Desktop\Add-In | Records: 1 - 1,186 | Per View: All | View All

View Column Properties | Create New Records | Delete Records | External Data

	A	B	C	D	E	F
	Respondent_ID	Seen_Movies	Fan	Seen_Ep_1_The_Phantom_Menace	Seen_Ep_2_Attack_of_the_Clones	Seen_Ep_3_Revenge_of_the_Sith
2	3288372923		1	0	1	0
3	3288373068		1	1	1	1
4	3288375286	0			0	0
5	3288378779	1	1		1	1
6	3288388730	1	1		1	1
7	3288389603	1	1		1	1
8	3288391812	1	1		0	0
9	3288395255	0			0	0
10	3288396374	1	0		1	1
11	3288398062	1	0		1	0
12	3288401136	1	1		1	1
13	3288401681	1	0		1	1
14	3288402511	1	1		1	1
15	3288402592	1	1		0	0
16	3288402643	1	1		1	1
17	3288402717	0			0	0
18	3288408698	1	1		1	0
19	3288410073	0			0	0
20	3288410348	1	0		1	0
21	3288413441	1	1		1	1
22	3288414025	1	1		1	1
23	3288415166	1	0		1	1
24	3288416959	1	0		0	0
25	3288417641	1	1		1	1
26	3288417782	1	0		1	1
27	3288420798	1	0		1	0
28	3288421819	0			0	0
29	3288423045	1	0		0	0
30	3288423088	0			0	0
31	3288425859	1	0		1	1

Tasks

Filters

Find a task

All Tasks

- Area Plot
- ARIMA Modeling and Forecasting
- Automatic Chart
- Bar Chart
- Bar Chart Wizard
- Bar-Line Chart
- Forecasting
- Plot
- al Correlation
- ize Data
- Cluster Analysis
- Compare Data
- Contour Plot
- Cov to SAS Server

Characterize Data

Open Help ☆


The Characterize Data wizard helps you to create a summary report, graphs, and frequency and univariate SAS data sets that describe the main characteristics of the data.

Category: Describe
Type: Built-in Task
Last used: 4/7/2016 10:46:06 AM
Procs: CONTENTS, UNIVARIATE, FREQ, SGPLOT

A1 | Respondent_ID

Characterize Data for C:\Users\canmvm\Desktop\Add-In for Office Talk\starwars.sas7bdat

2 of 3 Select the report options.



Output Types

- Summary Report
- Graphs
- SAS Data Sets

Frequency Data:

SAS server: Local
Library: WORK
Data set: FREQCharFrequencyForstarwars

Univariate Data:

SAS server: Local
Library: WORK
Data set: UNIVCharUnivariateForstarwars

<Back | Next> | Finish | Cancel | Help

F	3_Revenge_of_the_Sith
	0
	1
	0
	1
	1
	0
	1
	0
	1
	1
	0
	1
	1
	0
	1
	0
	0
	1
	0
	1
	1
	0
	0
	0
	1

Tasks

Filters

Find a task

All Tasks

- Area Plot
- ARIMA Modeling and Forecasting
- Automatic Chart
- Bar Chart
- Bar Chart Wizard
- Bar-Line Chart
- Forecasting
- Plot
- Partial Correlation
- Scatter Plot
- Cluster Analysis
- Compare Data
- Contour Plot
- Cov to SAS Server

Characterize Data

[Help](#) ☆

Characterize Data wizard helps you to create a summary report, graphs, and frequency and univariate SAS data sets to describe the main characteristics of the data.

Category: Describe
Built-in Task

Created: 4/7/2016 10:46:06 AM

Content: CONTENTS, UNIVARIATE, FREQ, SGPLOT

SAS Data Tasks Reports SAS Central Favorites Refresh Selection Manage Content Tools Help

A1195 [X] [✓] [fx] [Formula Bar]

	A	B	C	D	E	F	G	H	I	J	K	L	M	N	O
48	Summary of Numeric Variables for _TEMP.starwars														
49															
50	Variable	Label	N	NMiss	Total	Min	Mean	Median	Max	StdMean					
51	Fan		836	350	552	0	0.660287081	1	1	0.01639					
52															
53	Variable	Label	N	NMiss	Total	Min	Mean	Median	Max	StdMean					
54	Perception_Anakin_Skywalker		823	363	3223	1	3.916160389	4	6	0.043246					
55															
56	Variable	Label	N	NMiss	Total	Min	Mean	Median	Max	StdMean					
57	Perception_Boba_Fett		812	374	3075	1	3.786945813	4	6	0.0502999					
58															
59	Variable	Label	N	NMiss	Total	Min	Mean	Median	Max	StdMean					
60	Perception_C3PO		827	359	3666	1	4.432889964	5	6	0.0299569					
61															
62	Variable	Label	N	NMiss	Total	Min	Mean	Median	Max	StdMean					
63	Perception_Darth_Vader		826	360	2899	1	3.50968523	4	6	0.0539635					
64															
65	Variable	Label	N	NMiss	Total	Min	Mean	Median	Max	StdMean					
66	Perception_Emperor_Palpatine		814	372	2957	1	3.632678133	4	6	0.0579861					
67															
68	Variable	Label	N	NMiss	Total	Min	Mean	Median	Max	StdMean					
69	Perception_Han_Solo		830	356	3894	1	4.691566265	5	6	0.0230962					
70															
71	Variable	Label	N	NMiss	Total	Min	Mean	Median	Max	StdMean					
72	Perception_Jar_Jar_Binks		821	365	2634	1	3.208282582	3	6	0.0602198					
73															
74	Variable	Label	N	NMiss	Total	Min	Mean	Median	Max	StdMean					
75	Perception_Lando_Calrissian		820	366	3332	1	4.063414634	4	6	0.0438394					
76															
77	Variable	Label	N	NMiss	Total	Min	Mean	Median	Max	StdMean					
78	Perception Luke Skywalker		831	355	3815	1	4.590854392	5	6	0.0241687					

FILE HOME INSERT PAGE LAYOUT FORMULAS DATA REVIEW VIEW DEVELOPER JMP SAS

SAS Data Tasks Reports SAS Central Favorites Refresh Selection Modify Properties Manage Content Tools Help

A17 Generated by SAS ('Local', X64_7PRO) on April 07, 2016 at 11:29:49 AM

A	B	C	D	E	F	G	H	I	J	K
Correlation Analysis										
1 With Variables:		Fan								
1 Variables:		Perception_Jar_Jar_Binks								
Simple Statistics										
Variable	N	Mean	Std Dev	Sum	Minimum	Maximum				
Fan	836	0.660287081	0.473895225	552	0	1				
Perception_Jar_Jar_Binks	821	3.208282582	1.725484619	2634	1	6				
Pearson Correlation Coefficients										
		Perception_Jar_Jar_Binks								
Fan		-0.22206								
		0.0000								
		821								
Generated by SAS ('Local', X64_7PRO) on April 07, 2016 at 11:29:49 AM										

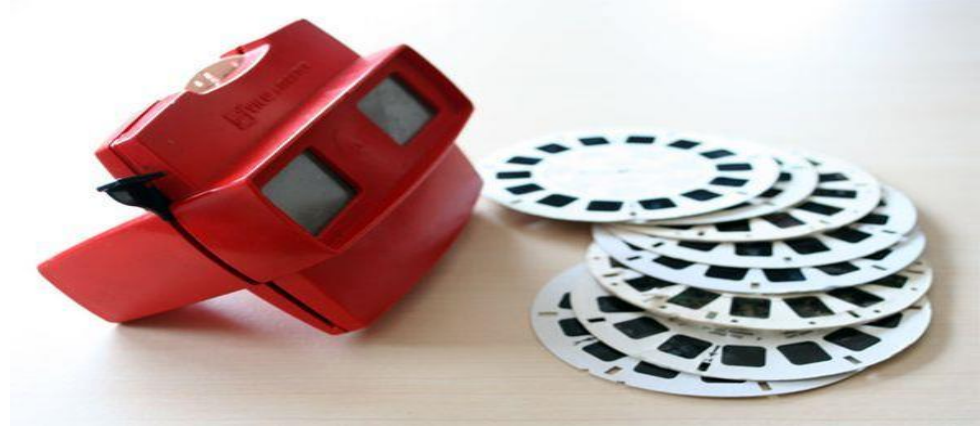
Tasks

Filters

Find a task

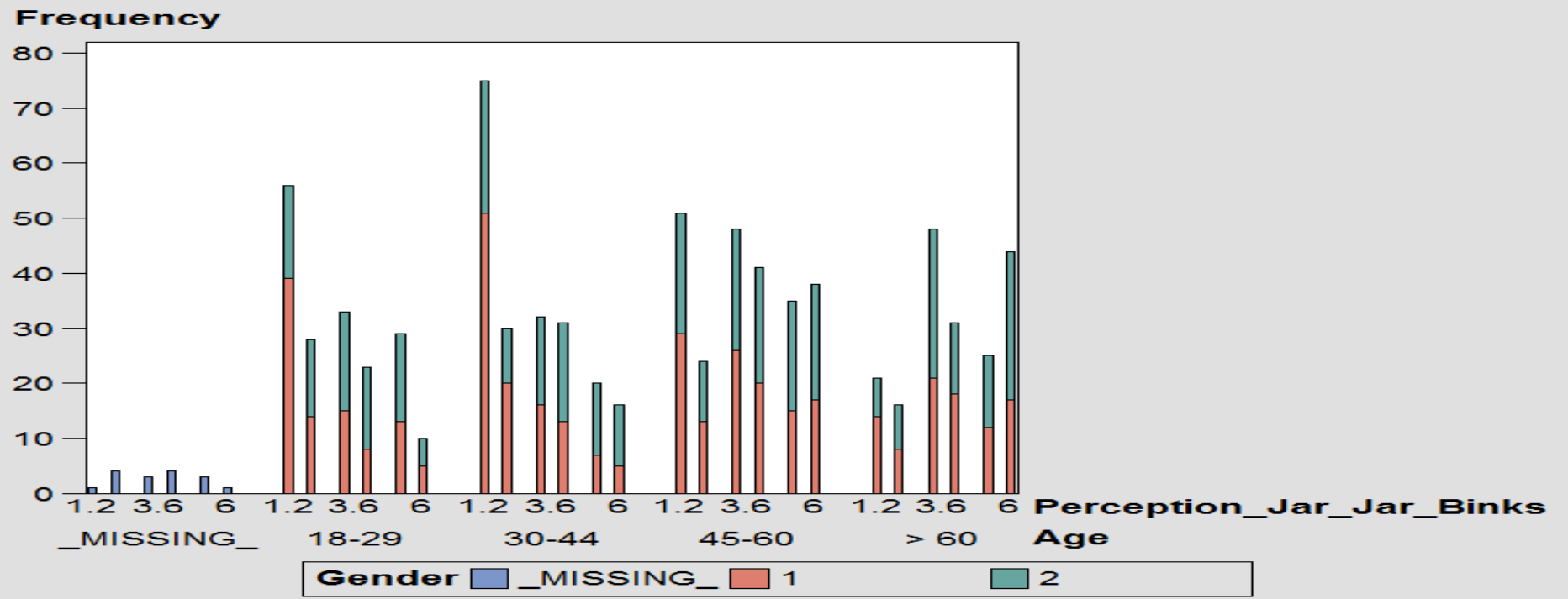
- Bar Chart
- Bar Chart Wizard
- Bar-Line Chart
- Basic Forecasting
- Box Chart
- Box Plot
- Bubble Plot
- c Chart
- Canonical Correlation
- CDF Plots
- Characterize Data
- Cluster Analysis
- Compare Data
- Contour Plot
- Copy to SAS Server
- Correlations**
- Create Time Series Data
- Data Set Attributes
- Discriminant Analysis

**BUT I'M MORE OF A
VISUAL PERSON...**

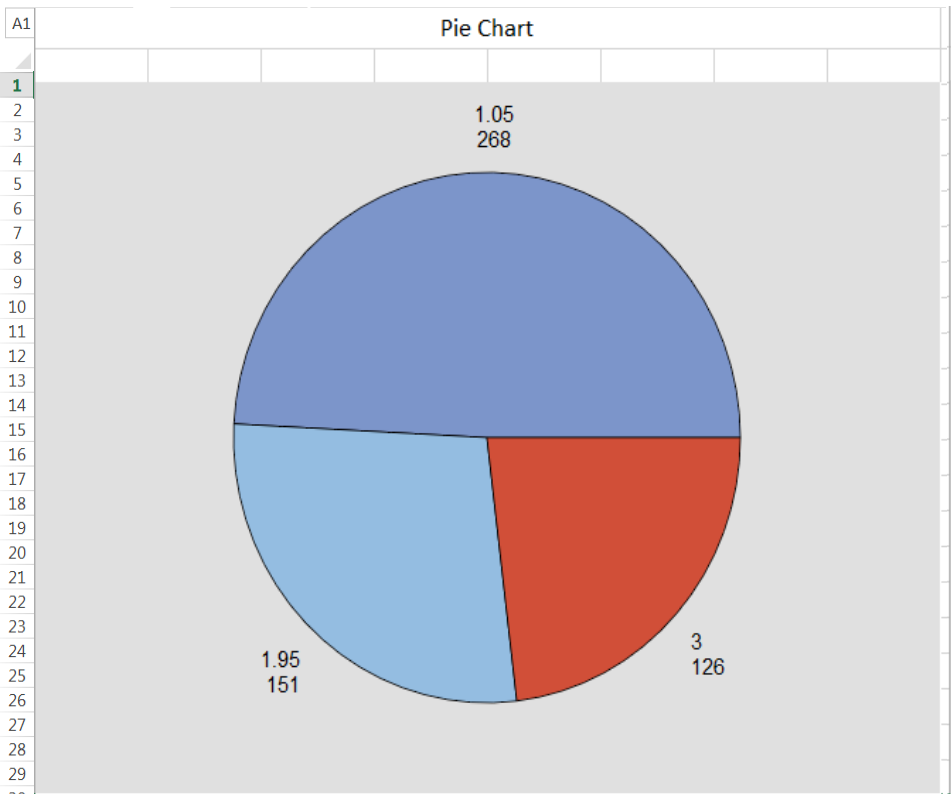


- Graphs, Charts and more...

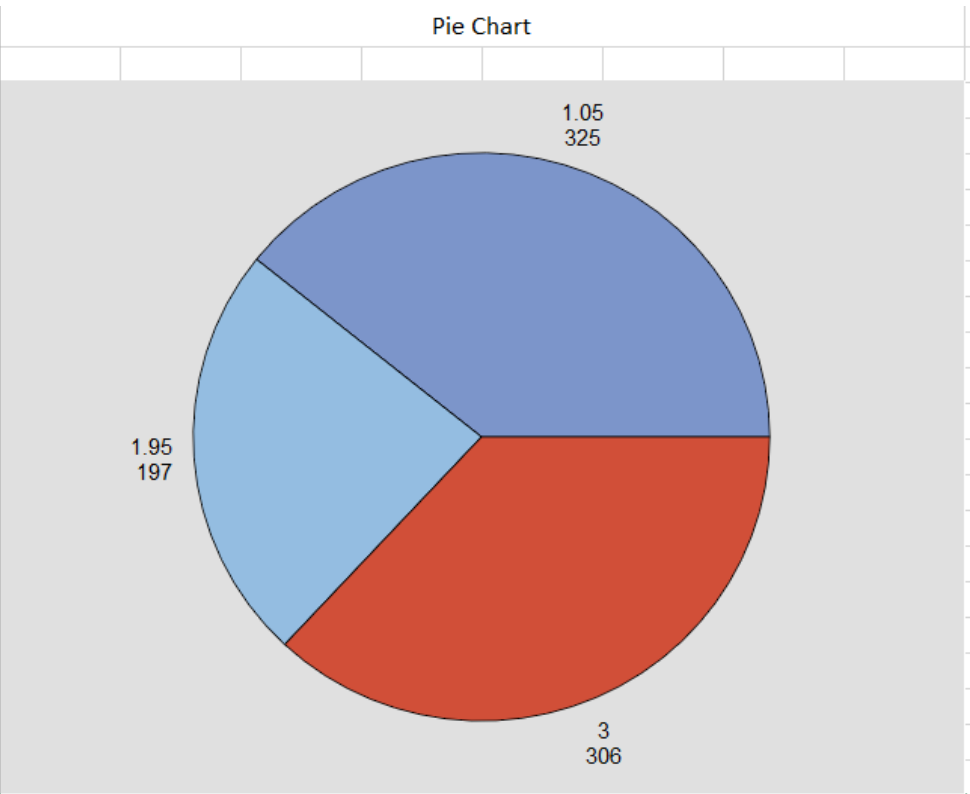
Bar Chart



Generated by SAS ('Local', X64_7PRO) on April 07, 2016 at 11:35:31 AM



Generated by SAS ('Local', X64_7PRO) on April 07, 2016 at 11:46:44 AM



Generated by SAS ('Local', X64_7PRO) on April 07, 2016 at 11:42:17 AM

REPORTING

- Leveraging the power of metadata and SAS, we can simply update our data 'on the fly' as required
- This allows for simple refreshes of presentations, monthly reports, dashboards, etc.
- Scheduling function

With Office Analytics, share across Office platform (email, Powerpoint, Word, etc.)

CUSTOM PROMPTS

- Build prompts/stored processes in Enterprise Guide/SAS Studio/VA and host in shared environment on server
- A single stored process could hold many custom prompts, and they could be dependent (i.e. sensitive to previous selections)
- Allows for flexible access and total autonomous use of a shared data environment (multiple users, minimal upkeep)
- Different filters, same table
- **HOWEVER**, be mindful of writing over data!

IN SUMMARY

- SAS works with Microsoft Office as an easy bridge into complex analytical and reporting processes
- Leveraging the power of SAS in a familiar framework is painless and easy



“May the Force
be With You”

-Dr Who

Matt.malczewski@sas.com

Twitter: Malchew

Linkedin: Matt Malczewski